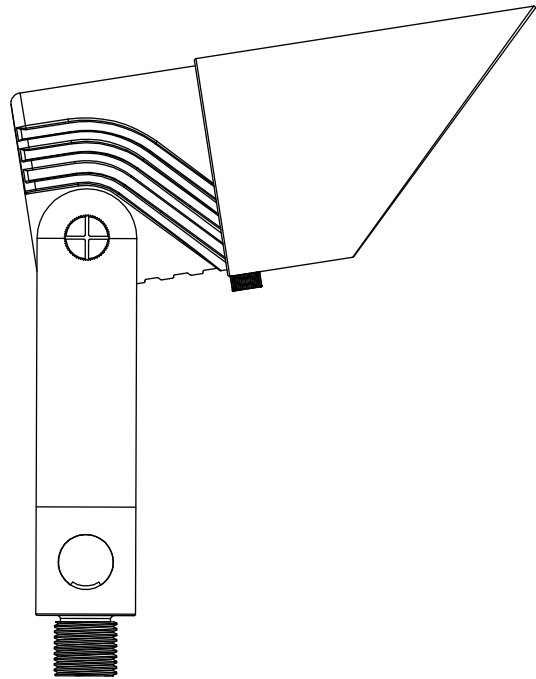


INSTALLATION INSTRUCTIONS



SAVE THE INSTRUCTIONS

IMPORTANT SAFETY INSTRUCTIONS

WARNING

This fixture is intended for installation in accordance with local codes and the National Electric Code (NEC). Failure to adhere to these codes and instructions may result in serious injury, property damage and void the warranty.

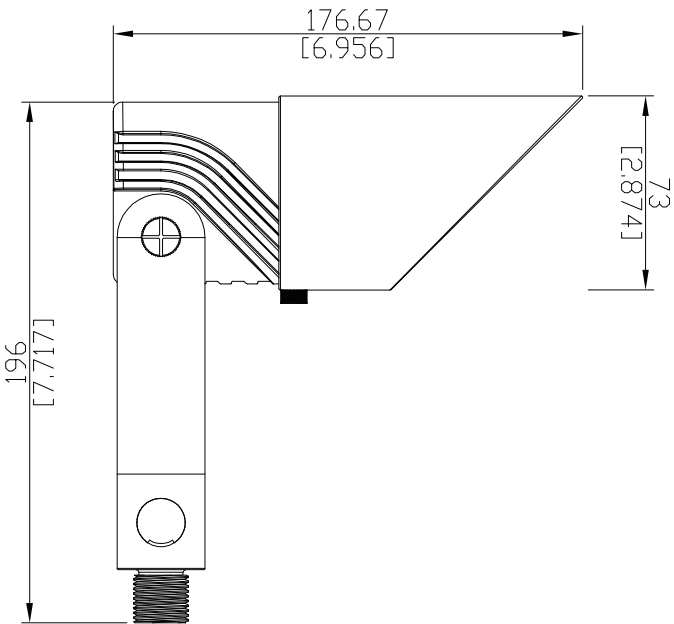
THE MAIN LOW VOLTAGE CABLE FROM THE LUMINAIRE IS TO BE:

Protected by routing in close proximity to the luminaire or fitting, or next to a building structure such as a house or deck.  
Not to be buried except for a maximum of 6 inches (15.2cm) in order to connect to the main low voltage cable.  
Have the length cut off so that it is connected to a connector within 6 inches (15.2cm) from a building structure, a luminaire or fitting.

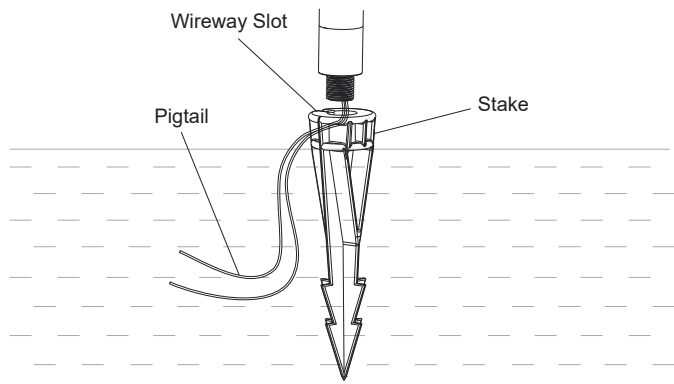
WARNINGS:

- These instructions do not intend to cover all variations in installation, operation maintenance or mounting situations.
- Make sure that the power is turned OFF before installing or servicing this fixture.
- Wiring requires waterproof wire connectors
- THE LIGHTED LAMP IS HOT. Luminaire can be extremely HOT in a short time. Do not touch any hot luminaire, lens or housing while power is on.
- Keep lamp away from materials that may burn.
- Do not operate the fixture with a damaged or missing lens or shield.
- Fixture(s) should be used “ONLY” with low voltage landscape power units that do not exceed 25A, 15V.
- The power units reduce the voltage from 120 volts to 12 volts.
- The main cable from power units should be buried for less than 6 inches under the ground level and can be purchased from your local electric supply house.
- Warning: Fixture(s) wires have to be run in close proximity to fixture(s) and not buried more than 3 inches.
- Dig a small hole and insert fixture spike into ground and turn on power unit.

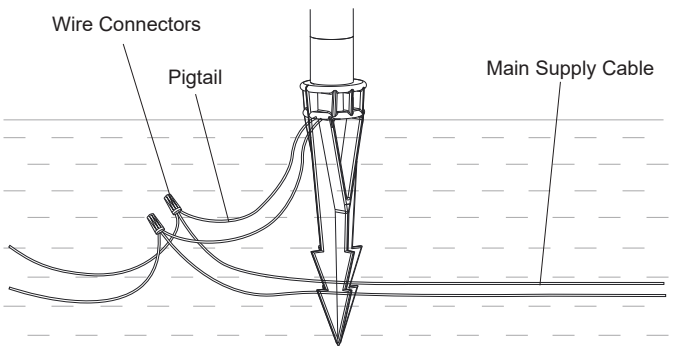
PRODUCT DIMENSIONS



INSTALLATION

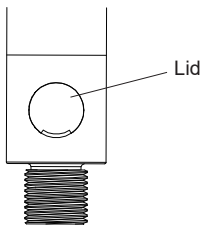


1.Connect the fixture with the stake

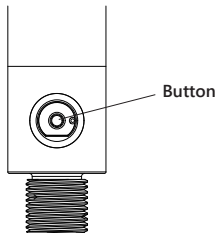


2.Connect the lead wire with power supply cable

ADJUST WATTAGE



1.Lift the lid



2.Press the button to adjust brightness

OPERATION

- First press:3W power output.
- ↓
- Second press:6W power output.
- ↓
- Third press:9W power output.
- ↓
- Fourth press:12W power output.
- ↓
- Fifth press:Turn off the light.

The sequence repeats in a cycle.

Power Memory Function: The spotlight has a power memory feature, which means that in case of power disconnection, it will remember the power setting before the power was disconnected. When power is restored, the spotlight will maintain the previous power level.

SPECIFICATION

Item	Up Light
Voltage	9-17V AC/DC
Wattage	3/6/9/12W <sub>(adjustable)</sub>
Luminous Efficiency	≥ 80lm/w
Color Temperature	2700K-5000K
CRI	≥ 85
Beam Spread	24°/36°/60°
IP Rating	≥ 65
Material	Aluminium
Operating Temperature	-40 C ~40 C

FEATURES

- Designed and engineered for outdoor applications
- Adjustable wattage
- Lenses:24/36/60° each 1 pc provided
- Aluminum housing
- IP65 weatherproof and water-resistant
- Shockproof internal structure
- Shatterproof and anti-glare lens
- Advanced driver and LED solutions
- Top quality electronic components
- Long lasting, service life span up to 25,000 hours