



**CloudyBay
RGBCW Color Changing
Smart Light**

USER MANUAL

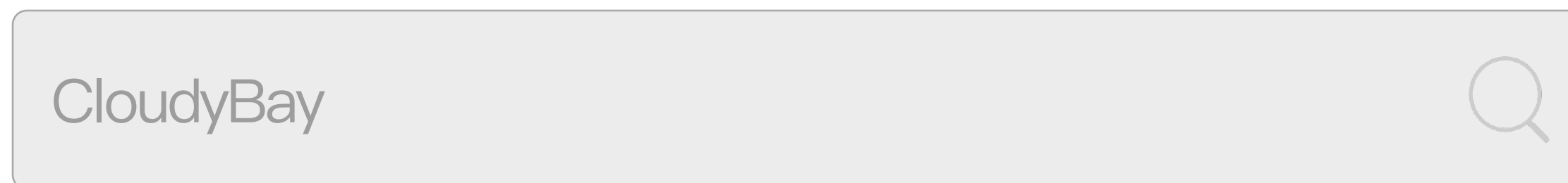
BLE Version

Contents

- 1. GET READY 1
- 2. REGISTRATION 2
- 3. SETUP HUB 3–4
- 4. SETUP LIGHTS 5–6
- 5. LIGHT CONTROL 7
- 6. GROUP LIGHTS 8
- 7. FAQ 9
- 8. TIPS 10

1. GET READY

- Download the 「  CloudyBay 」 APP



* The APP requires iOS 10.0 / Android 5.0 or above

- Please make sure your mobile device is connected to the 2.4GHz Wi-Fi and mobile device Bluetooth is turned on.

2. REGISTRATION


Register

 >

Step1:

Enter your Email Address to get verification code.

Verify it's you

Step2:

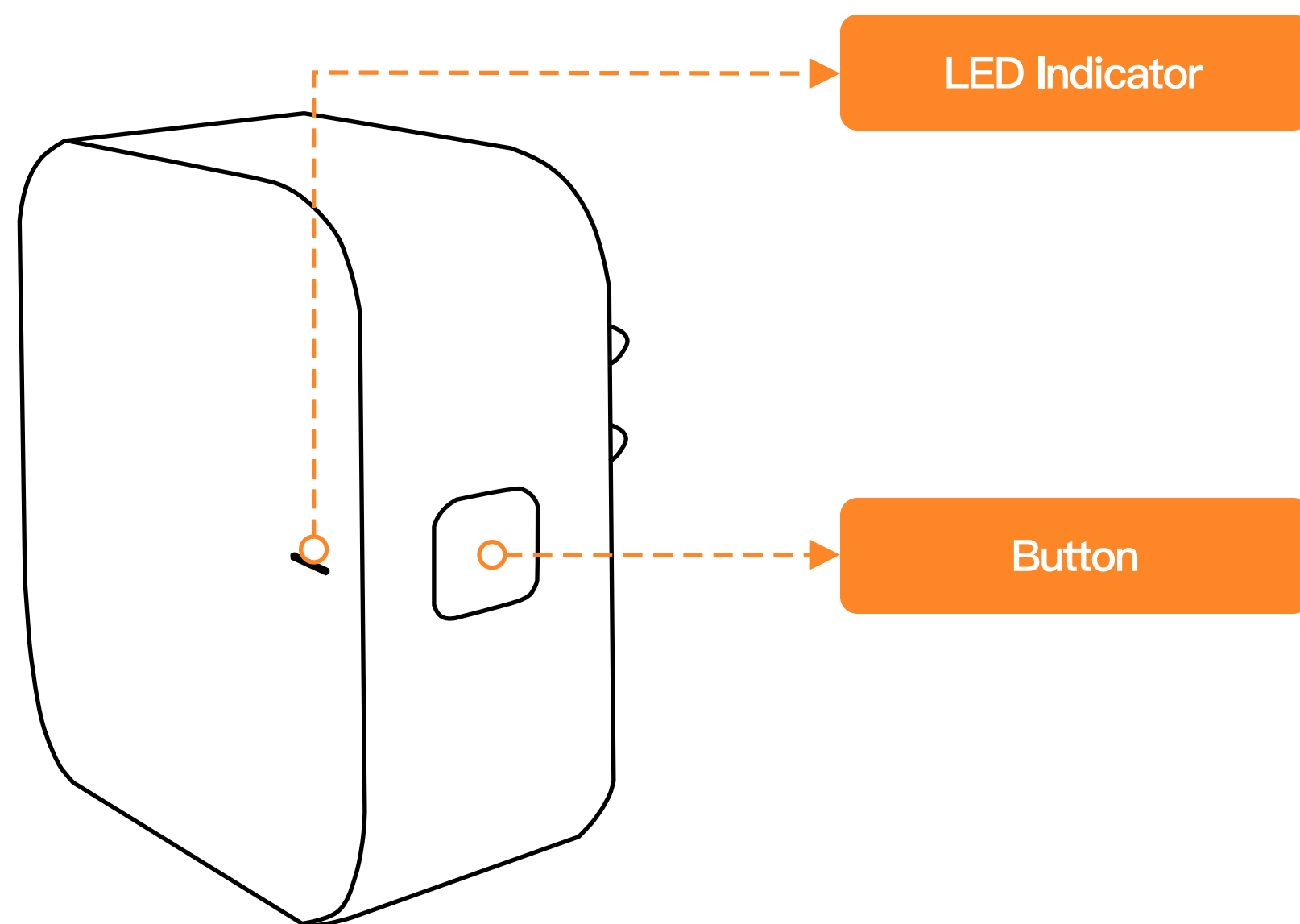
Enter the verification code and set your password.

3. SETUP HUB

You can connect Max.30 lights with one Hub ideally. If you have already installed the CloudyBay Hub, Please skip to Page 5 to add more lights.

Step1: Activate Pairing Mode

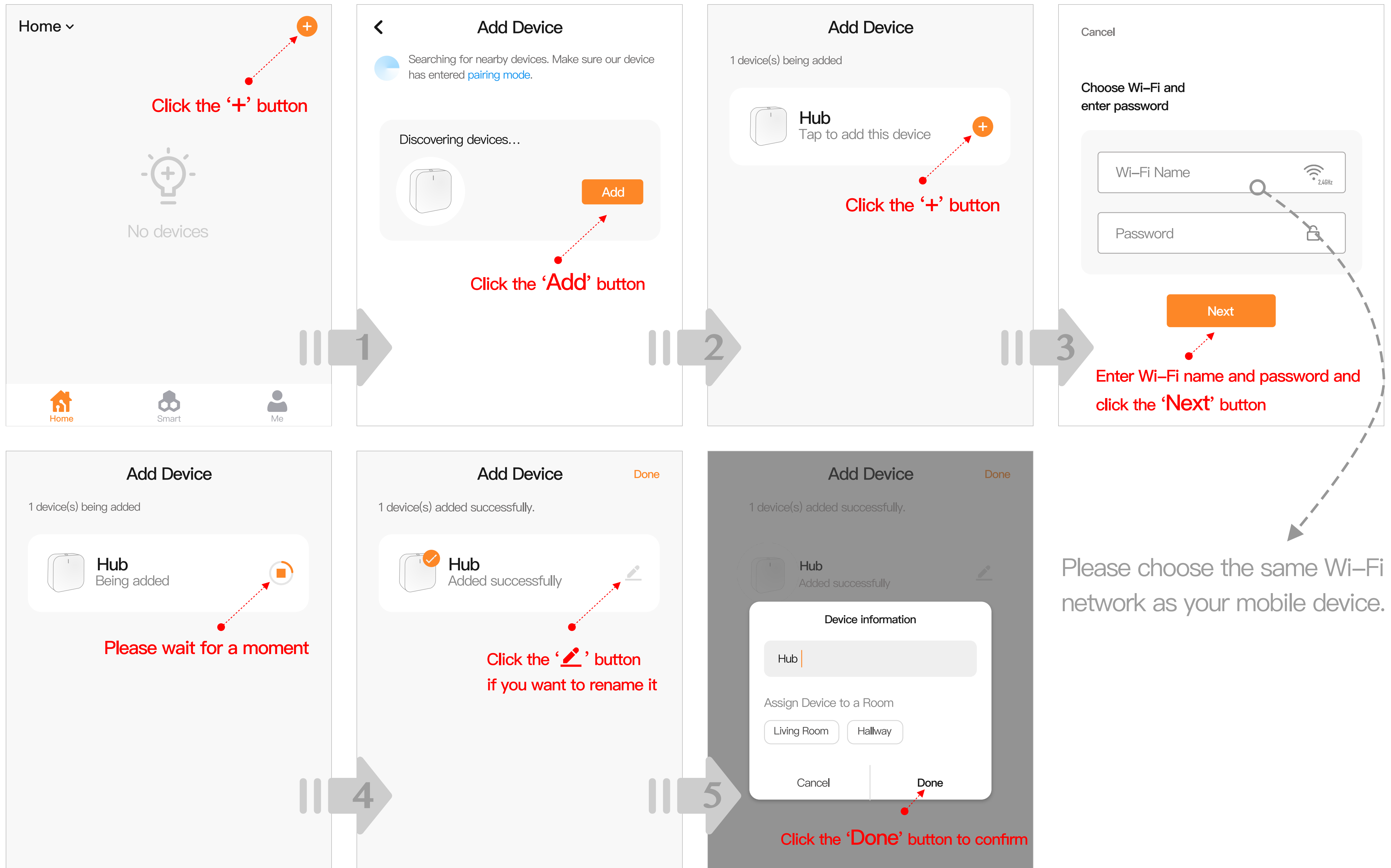
Hold the Button for 5 seconds. Please confirm the indicator is blinking.



Note: Please make sure your mobile device is connected to the 2.4GHz Wi-Fi and mobile device Bluetooth is turned on.

Step2: Add the Hub

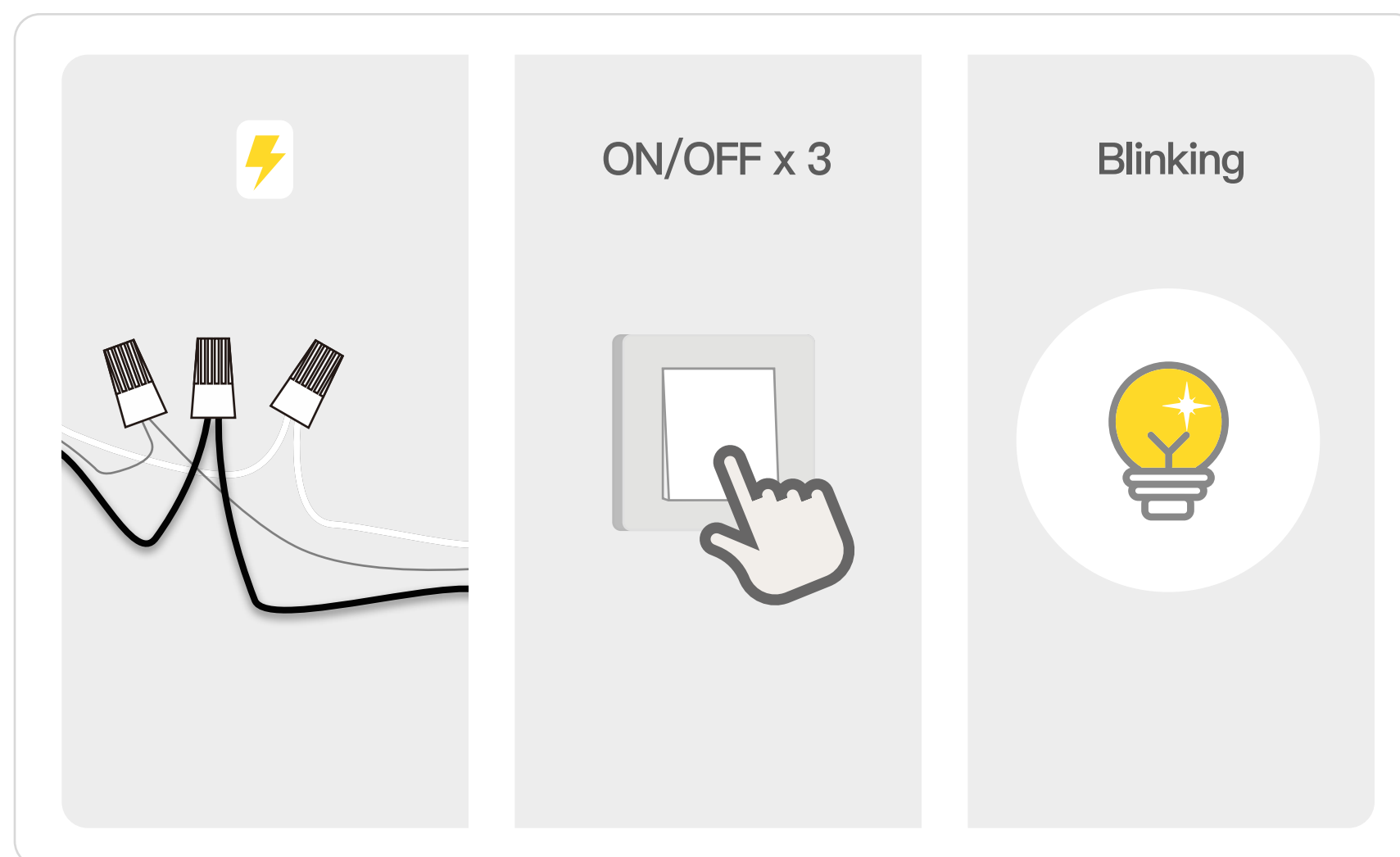
Launch the CloudyBay APP and follow the instructions below to add a hub.



4. SETUP LIGHTS

Step1: Activate Pairing Mode

Please make sure the lights are powered off for more than 10 seconds before adding. Then turn on/off 3 times (on-off-on-off-on), 2 to 4 seconds between each on and off. Waiting few seconds until the lights blinking rapidly.



NOTICE

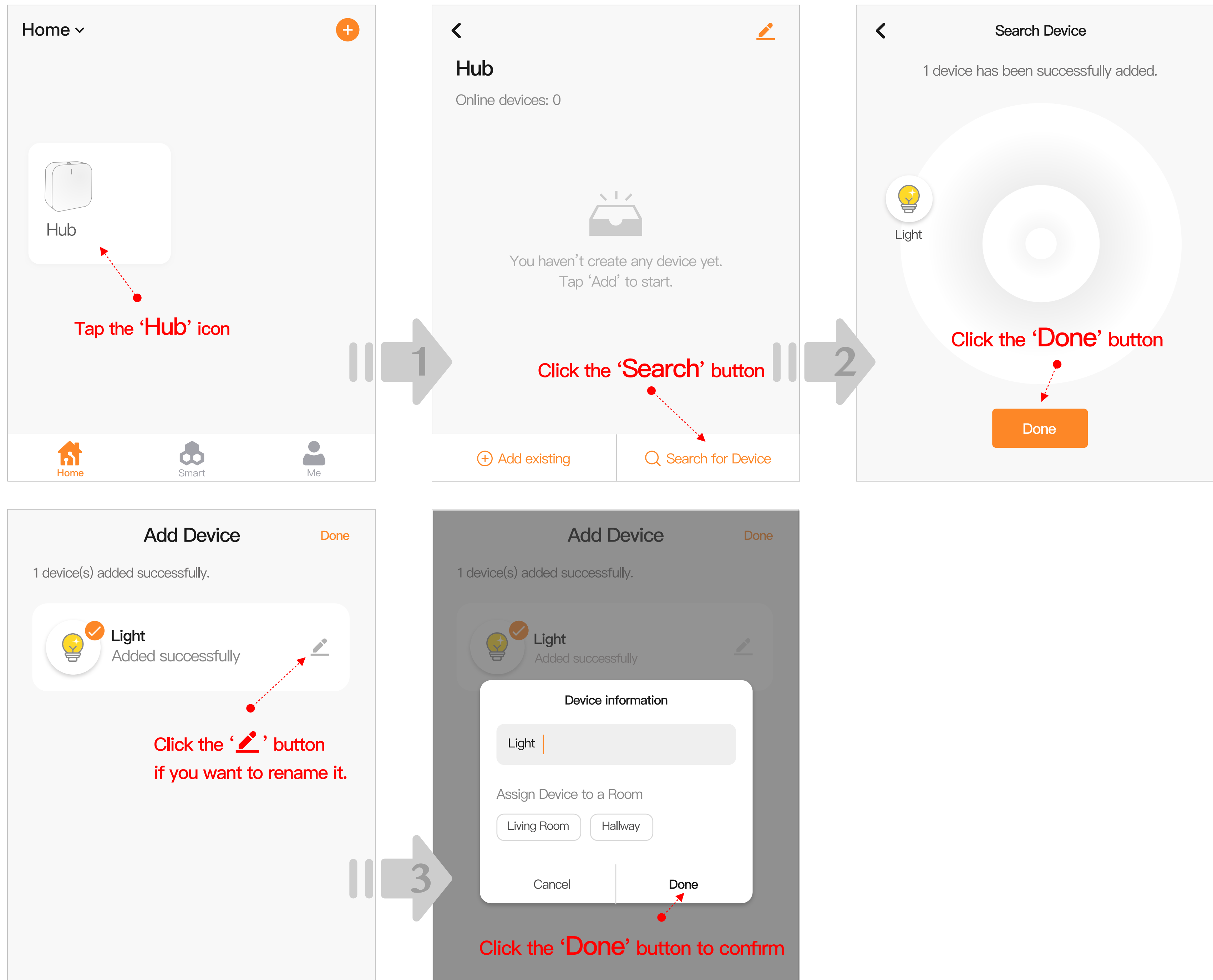
Considering the loading capacity of your house Router and WiFi signal problem.

1. We don't suggest you add more than 6 lights at one time.
2. Some lights might fail to add to CloudyBay APP during this process. Don't worry, just try few more times with steps on Page 5 to 6 until all lights are added to ClodudyBay APP.

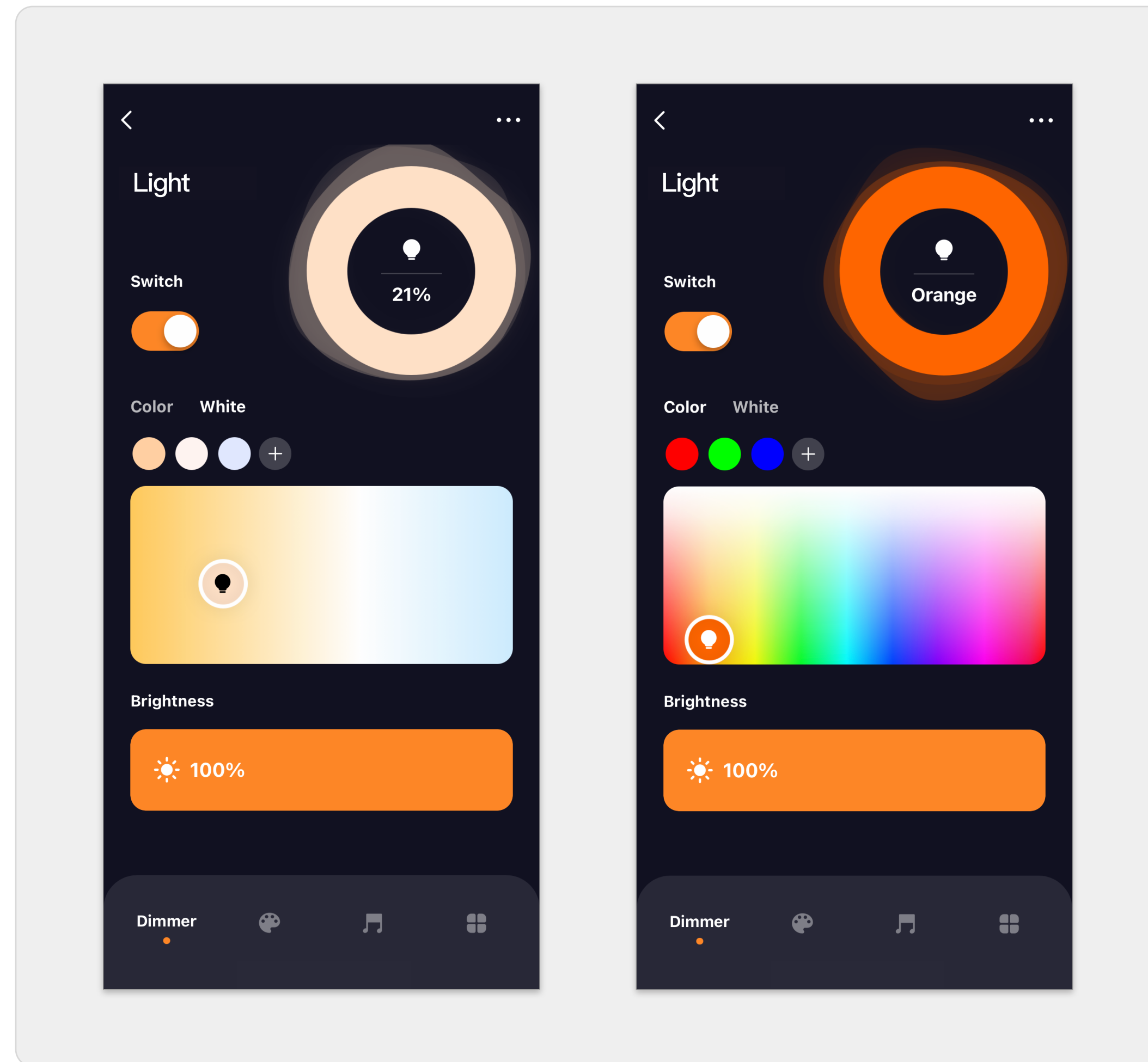
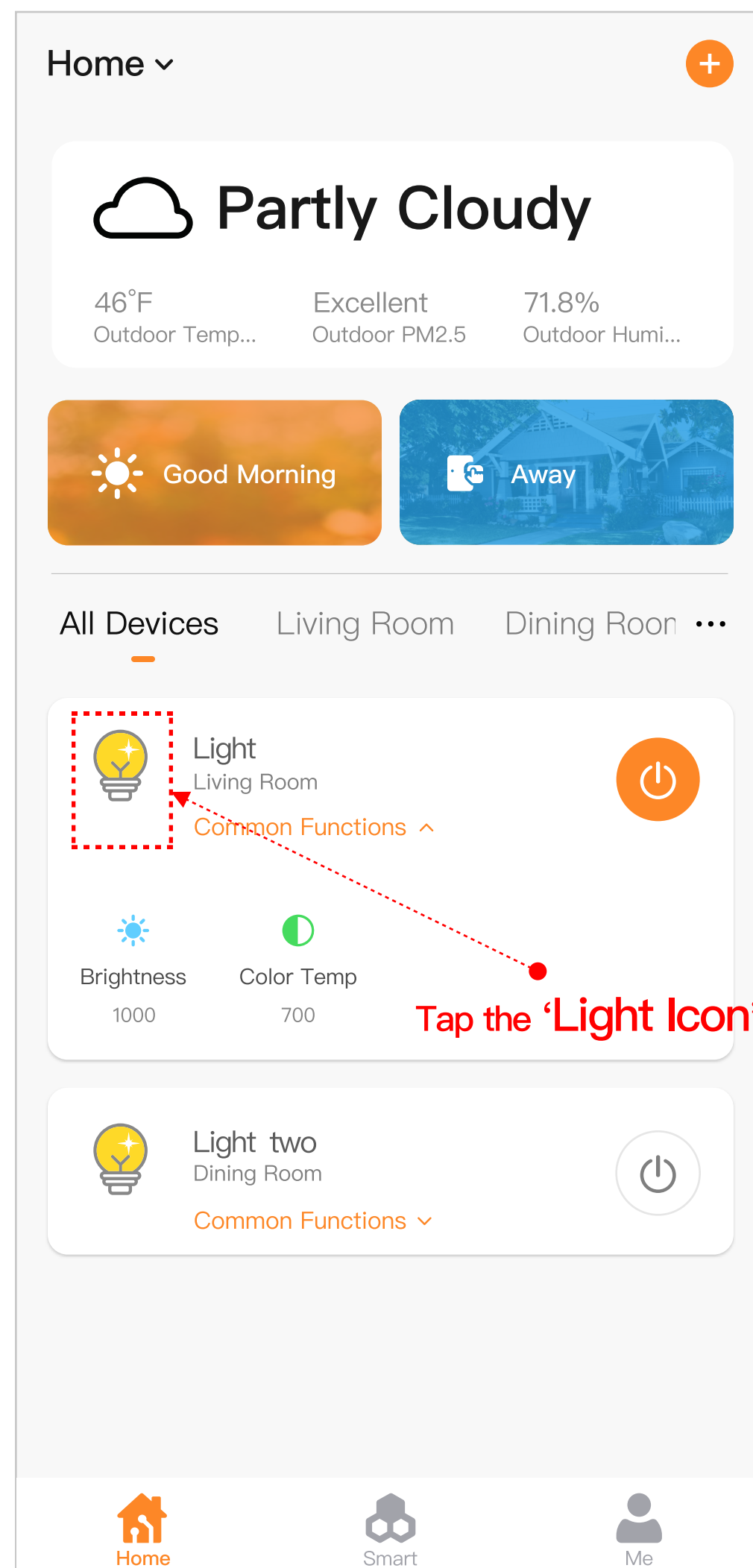
Your patience is highly appreciated, Thank you !

Step2: Add the lights

Tap the Hub icon in the CloudyBay APP and follow the instructions below to add the lights.



5. LIGHT CONTROL



Light Control Panel

If you want to fully control the light, you need to tap the light icon from the device list to enter the control panel.

7. FAQ

1. Can I dim these lights by physical dimmer ?

No, these lights can only be dimmed by APP control or Voice control.

2. Why can't I activate the pairing mode?

Please make sure the interval between each on/off is 2 to 4 seconds and the light is on each time. Please power off the light for more than 10 seconds before restarting this process.

3. Can I use the 5GHz Wi-Fi to add the lights?

No, only support 2.4GHz Wi-Fi and please make sure step lights and your mobile device were connected to the same Wi-Fi network.

4. How to group lights in the Amazon Alexa or Google Home?

Please refer to Voice Control Guide.

5. Why the lights flash when I control them by wall switch ?

Turning on/off continuously by the wall switch may accidentally activate pairing mode. Just turn it off, wait 30 seconds, then turn it on, it will be back to normal.

6. Can I remote control the lights via mobile network?

Yes. Please make sure the lights are online, you could check the lights status in the CloudyBay App.

7. How many lights can I connect?

We recommend assigning Max.30 lights to each hub.

8. Can I share the lights with my family?

Yes, you can. Your family need to get CloudyBay APP and sign in. Then you can share one or more lights with him/her to his/her account.

8. TIPS

Warranty

The product carries a 3-year warranty from purchase date. Please feel free to contact us when you have any product problem or suggestions. We take care of all quality-related issues with a REPLACEMENT or FULL REFUND.

Data Security

CloudyBay smart products are based on Tuya (NYSE: TUYA) IoT PaaS platform, and who's data center set up in the United States.

More Smart Products

Visit <https://cloudybaylighting.com/smart/> to find more CloudyBay smart products.

Support

Visit <https://cloudybaylighting.com/smart/help> ,
or contact us by smart@cloudybaylighting.com to reach us for help.