

# SIERRA PREMIUM

LUXURY ENGINEERED TO PERFORM



The power of possibilities



# True luxury never loses its luster... Sierra's beauty is engineered to last

Sierra Premium Shake wraps a home in a luxurious, substantial look that never grows tired and quietly demands attention. It is as beautiful to the eye as it is substantial to the touch. But to fully appreciate its true worth, you need to understand what goes into it and what you stand to get out of it. Make no mistake; everything about Sierra is very deliberately engineered. This is a luxury product engineered to outperform an entire category. From the speed and ease with which it goes up, to the enduring low-maintenance beauty it delivers, Sierra Premium Shake will not only turn heads, it will stop traffic... for a very long time.











# Dripping with character, this classic has the Midas touch

The closer you get to a Sierra Premium Shake the more obvious the quality becomes. Nichiha's Sierra Premium Shakes are a full half-inch thick – the thickest fiber cement shake available. Our ability and willingness to make a shake that thick enables us to create deeper, more dramatic shadows, grooves and keyways. Get past the pretty face, and you have a product that also will not rot, warp, delaminate or fall victim to pests. And like all Nichiha fiber cement products, you can rest assured knowing that Sierra has a heart of green. Comprised primarily of fly ash and FSC wood pulp, it's a product that you can feel good about using.

## ***Sierra Premium™ Shake Product Specification***

Height (nom. in. ~ actual mm)	9" (288.6mm)
Length (nom. ft. ~ actual mm)	9' 4" (2865mm)
Thickness (nom. in. ~ actual mm)	1/2" (12mm)
Weight (lbs. per board)	21.7
Weight (lbs. per sq. ft.)	3.1
Coverage (sq. ft. per panel)	7
Exposed Coverage (sq. ft. per board with 1-1/4" overlap)	6.02
Packaging (boards per pallet)	200





# Discover the power of possibilities... and partnerships

Nichiha and PPG combined to create something beautiful and enduring. The deep rich colors of Sierra Premium help highlight the shadows and contours of our shake. It's a look homeowners have loved for centuries. Scraping and painting is another story. Thanks to our partnership with coatings giant PPG, Nichiha is able to offer you a highly specialized, state of the art finish that stands up to whatever Mother Nature has to muster. The deep rich colors you've fallen in love with today, will continue to look great for a long, long time. And Nichiha stands behind that promise with the longest warranty in the business with a lifetime limited warranty\*.



#### **PPG Semi-Transparent Finish**

A second coat just to reemphasize that we mean business.

#### **PPG Duracolor™ Semi-Transparent Finish**

A proprietary PPG coating engineered to stand up to the sun, the rain and anything else Mother Nature has to offer.

#### **PPG Sandstone Basecoat**

A layer of solid color infused with PPG's durable pigmentation. This layer is the "heavy armor", providing the greatest level of protection for the fiber cement.

#### **Nichiha sealer and Primer**

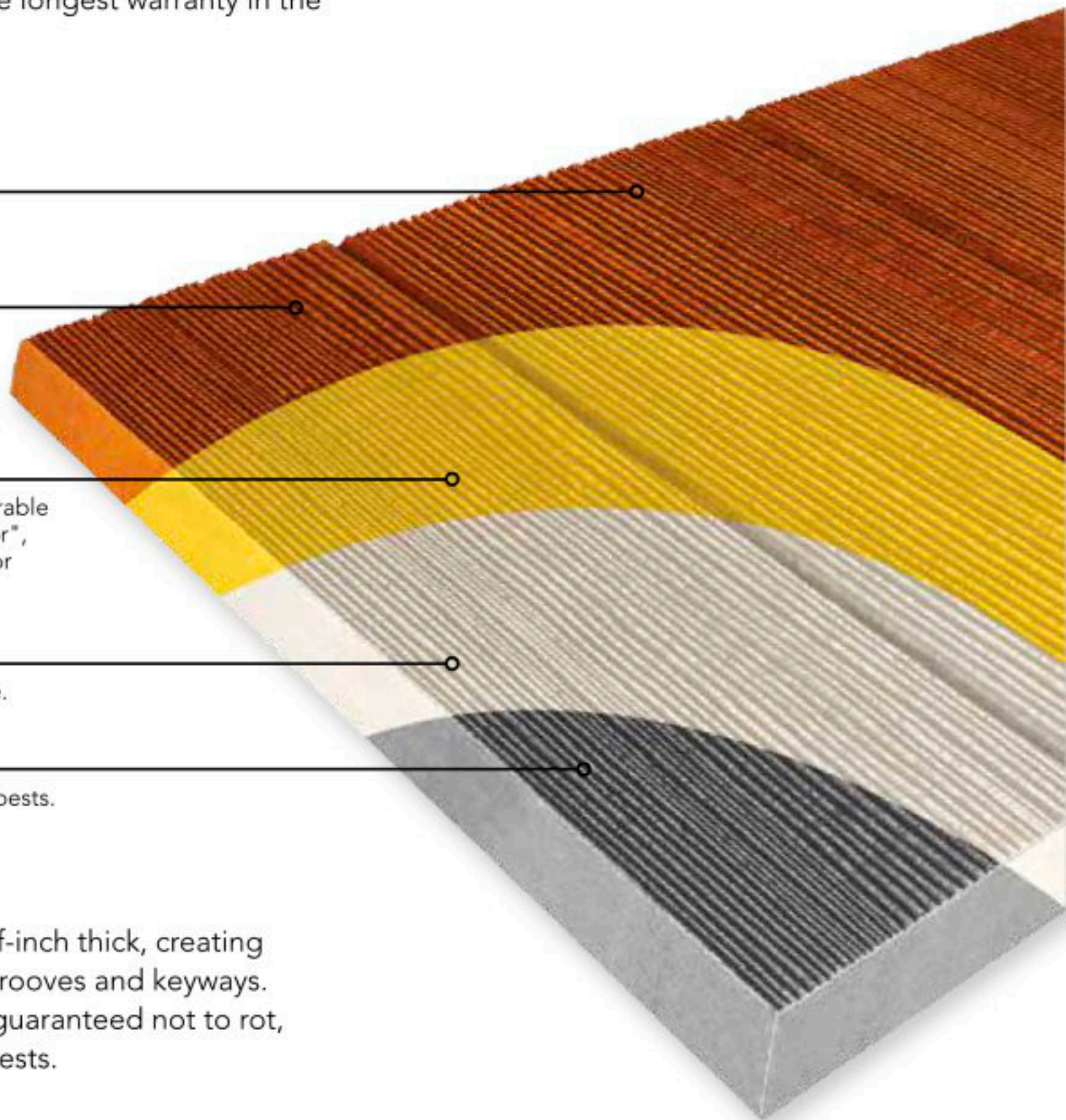
First line 2-coat protection against moisture.

#### **Nichiha fiber cement**

Warp-free, rot-free and never bothered by pests. At ½-inch thick, it's the category's thickest.

Sierra Premium Shake are a full half-inch thick, creating deeper, more dramatic shadows, grooves and keyways. And like all our products, Sierra is guaranteed not to rot, warp, delaminate or fall victim to pests.

\* See Nichiha warranties for detailed information on terms, conditions and limitations. Visit [nichiha.com](http://nichiha.com) for easy downloadable warranties or call 1-866-424-4421.

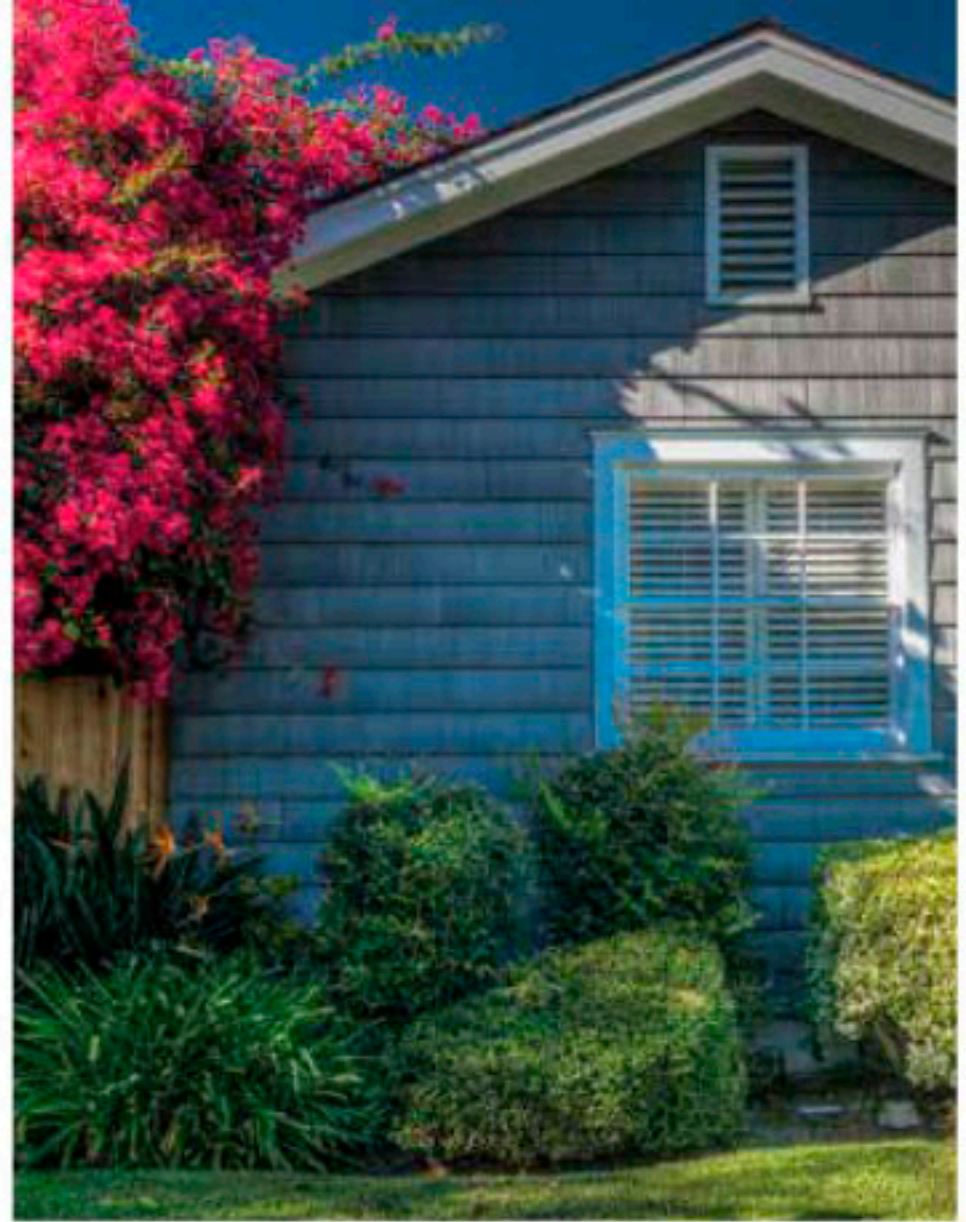




# Sustainability comes naturally

Fiber cement products are by their very nature essentially green products. All our products are comprised of a high percentage of FSC wood pulp and fly ash; both are examples of an abundant, manufacturing by-product. Sustainability, however, goes far beyond ingredients. Nichiha has a long history of conserving resources and employing manufacturing best practices that make as much sense for our planet as they do for our customers.

We don't add silica. Silica is a naturally occurring compound, and while our products are not silica free, we do not use additional silica in our manufacturing process.



## Certification & testing:



50% Recycled.



Report No. 13205-R



Report No. ESR-1694



NICHIHA USA, Inc.  
6659 Peachtree Ind. Blvd. Suite AA  
Norcross, GA 30092  
Toll Free: 1-86-NICHIHA-1 (1-866-424-4421)  
Phone: 770-805-9466 - Fax: 770-805-9467  
[nichiha.com](http://nichiha.com)



**Silica Dust Warning:** NICHIHA products may contain some amounts of crystalline silica [a.k.a. sand, silicon dioxide], which is a naturally occurring mineral. The amount will vary from product to product. Inhalation of crystalline silica into the lungs and repeated exposure to silica can cause health disorders, such as silicosis, lung cancer, or death depending upon various factors. To be conservative, Nichiha recommends that whenever cutting, sawing, sanding, sniping or abrading the product, users observe the Safety Instructions above. For further information or questions, please consult the MSDS, your employer, or visit [www.osha.gov/SLTC/silicacrystalline/index.html](http://www.osha.gov/SLTC/silicacrystalline/index.html) and [www.cdc.gov/niosh/topics/silica](http://www.cdc.gov/niosh/topics/silica). The MSDS for Nichiha products are available at [www.nichiha.com](http://www.nichiha.com), at your local Nichiha dealer or through Nichiha directly at 1.866.424.4421. FAILURE TO ADHERE TO OUR WARNINGS, MSDS, AND OTHER INSTRUCTION MAY LEAD TO SERIOUS PERSONAL INJURY OR DEATH.

SIERRA PREMIUM is a trademark of Nichiha USA, Inc.

NOTE: Printed material may not accurately depict actual product color.

©2014 Nichiha USA, Inc. All rights reserved. Printed in the USA. BP 7.5K 2.14 SPS