

IQTT-G Temperature Sensor

Introduction

Industrial platinum thermal resistance is taken as a temperature sensor which is normally used with display instrument, recording instrument and electronic regulator. It can directly measure the temperature of liquid, steam, gas medium and solid surface in production process from $-200\text{ }^{\circ}\text{C}$ to $500\text{ }^{\circ}\text{C}$. And the explosion-proof construction is suitable for explosionproof occasions. IQTT Temperature Sensor has been widely used in petroleum, chemical, pharmaceutical, electric power, metallurgy, papermaking and other industries etc.



Features

- Compact size, convenient for installation;
- High reliability with sensor contacting with measured media;
- Anti-corrosive for wetted parts;
- Various customization available.

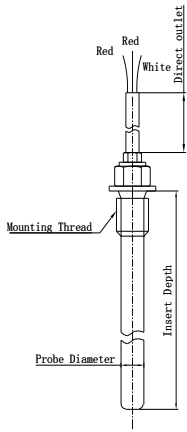
Specification

- P-type Thermal Resistance

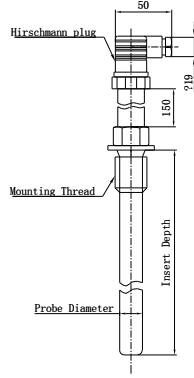
Sensor Type	Measured Range	Graduation	Allowed Error $\Delta t\text{ }^{\circ}\text{C}$
P-type Thermal Resistance	$-200^{\circ}\text{C} \sim 500^{\circ}\text{C}$	Pt100 Pt1000	A Class ($-50^{\circ}\text{C} \sim 300^{\circ}\text{C}$) Allowed Error $\pm (0.15+0.002 t)^{\circ}\text{C}$ B Class ($-200^{\circ}\text{C} \sim 500^{\circ}\text{C}$) Allowed Error $\pm (0.3+0.005 t)^{\circ}\text{C}$

Outline Construction (Unit: mm)

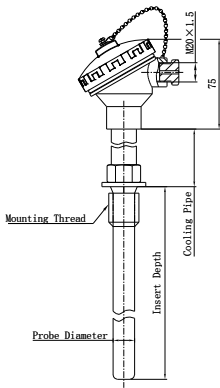
Electrical Connection



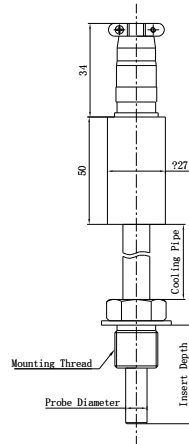
L--Cable version



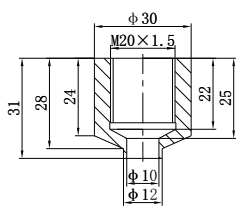
H--Hirschman version



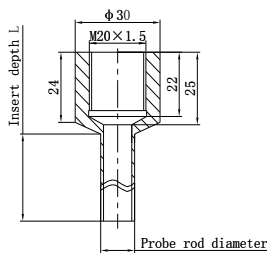
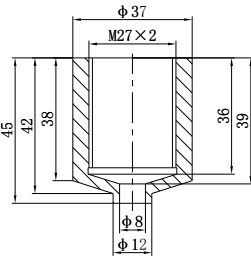
F--Water-proof connection box version



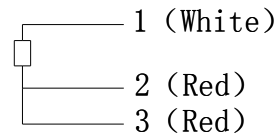
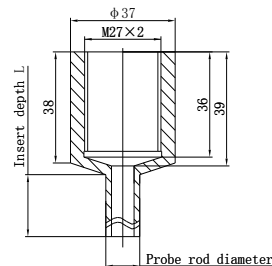
K-4 pin aviation plug version



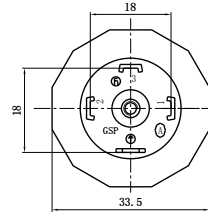
Welded base



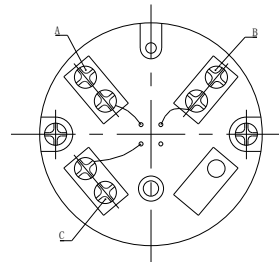
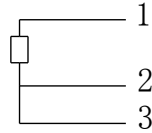
Welded casing



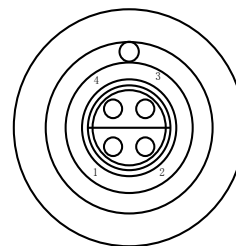
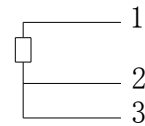
L-Cable Version



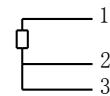
H--Hirschman plug version



F--Water-proof connection box version



K-4 pin aviation plug version



Order Guide

IQTT-G	P	Temperature Sensor [Pt100 (-200°C ~0°C...500°C)]	
	PT1000	Temperature Sensor [Pt1000 (-200°C ~0°C...500°C)]	
	Code	Number of sensors	
	Null	1 (default)	
	2	2 pieces	
	Range	-200°C~ 0°C...500°C	
	(X ~ Y) °C	X: lower limit of the measured temperature, Y: upper limit of the measured temperature. Unit: °C	
	Code	Protection tube outer diameter(default: single casing, unit: mm)	
	6	φ6	
	8	φ8	
	10	φ10	
	12	φ12	
	612	Inner tube φ6, outer tube φ12 (φ12 welded casing)	
	816	Inner tube φ8, outer tube φ16 (φ16 welded casing)	
	Code	Installation method and installation connector	
	C	Fixed thread installation, M20×1.5 male, thread length 18mm	
	M	Fixed thread installation, M27×2 male, thread length 32mm	
	G	Fixed thread installation, G1/2 male, thread length 20mm	
	IV	Fixed flange installation (DN10, DN15, DN20, DN32...)	
	V	Chuck installation (Clampφ25.4,φ50.4...)	
	VI	Movable flange installation (DN10, DN15, DN20, DN32...)	
	VII	Fixed thread installation, M16×1.5 male, thread length 18m	
	VIII	Fixed thread installation, G3/8 male, thread length 14mm	
	IX	Other standard thread sizes, please note	
	X	Fixed thread installation, NPT1/4 male, thread length 14mm	
	XI	Fixed thread installation, G1/4 male, thread length 14mm	
	N	Null	
	Code	Insert depth (The thread length is included by default, if not, please note)	
	XXX	Based on required length	
	Code	Material of wetted parts	
	1	SS304(default)	
	2	SS316L	
	3	PTFE sleeve	
	4	Other materials	
	Code	Electrical connections	
	K	4-pin aviation plug version	
	H	H--Hirschman version	
	F	Water-proof connection box version	
	XXX	Cable version length, unit: mm	
	Code	Cooling pipe size(If there is no cooling pipe, please fill in "0", unit: mm)	
	XXX	Cooling pipe length ≥ 0mm	-200°C~ 100°C
		Cooling pipe length ≥ 100mm	-200°C~ 150°C
		Cooling pipe length ≥ 150mm	-200°C~ 500°C
IQTT-G-	2	□ □ □ 200 □ □	6 C 100 1 F 0 Whole Specification

Notes

1. If there is no specific demand, except the probe part and the housing, other materials are 304 stainless steel;
2. If you need a product with a base, please note the length of the probe is the size not including the base;
3. For the content not included in this order guide, please consult us for customization. This item is marked by “**”, and please provide text description or drawings in the remarks;
4. The default electrical connection is 3-wire, please note for 2-wire or 4-wire.

Selection example description

For Example: IQTT-G-(0~200)-6-C-100-1-F-0, Description: IQTT-G temperature sensor, double PT100 resistance, temperature range (0°C ~200°C), probe outer diameter 6mm, thread M20×1.5 male, insert depth of protection tube 100mm, protection tube material stainless steel 304, water-proof connection box version.