
FORMULATED WITH YOU IN MIND

*Original*TM
HEMP

Product Catalog

*Original*TM
HEMP





ORIGINAL HEMP WAS FORMULATED WITH YOU IN MIND

Each Original Hemp product was carefully crafted to address your unique needs. Whether that's waking up energized, falling asleep peacefully, or getting through the day with less stress, Original Hemp was developed to give you a clear mindset, improve your well-being, and bring out the essential qualities within you--your "best self."

Original Hemp is more than CBD. It's our belief the future of hemp and our understanding of its effects on the body are unlimited. Our philosophy is to pair the highest quality whole plant CBD extracts with clinically studied ingredients to maximize cannabinoid absorption and enhance their effects. You won't find our unique formulas anywhere else.

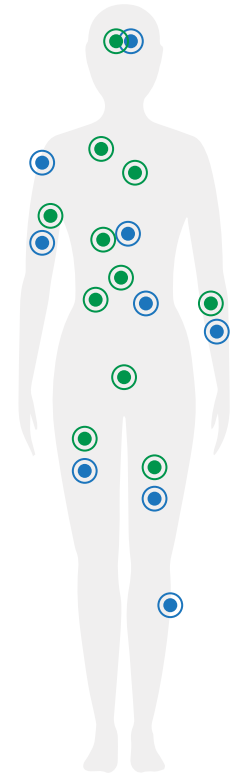
Original Hemp raises the bar. Our process is simple. Go above and beyond in everything we do--from ingredient sourcing to formulating, manufacturing, testing, and educating. We're driven by the ultimate goal of bringing you a full line-up of Original Hemp CBD products to take your health journey to the next level and make natural wellness accessible, affordable, and transparent for all.

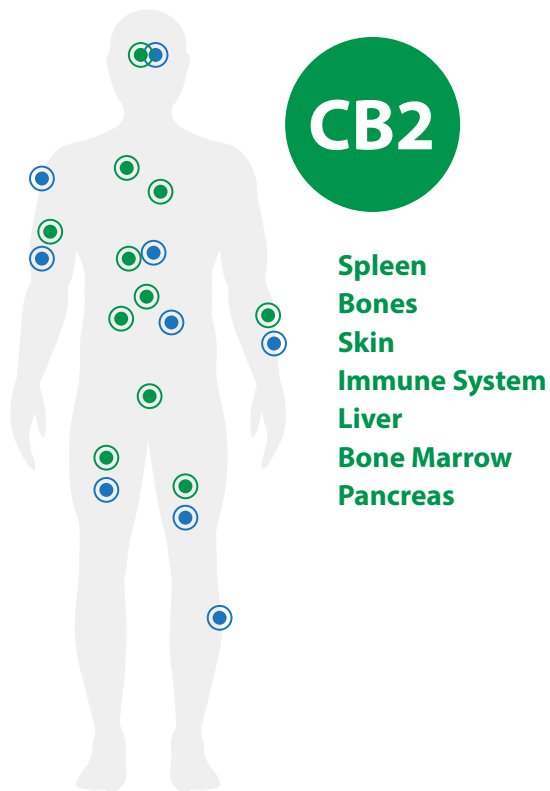
THE ENDOCANNABINOID SYSTEM (ECS)

The Endocannabinoid system is composed of two parts, endocannabinoids and their receptors which are found throughout the body: in the brain, organs, connective tissues, glands, and immune cells. In each tissue, the cannabinoid system performs different tasks, but the goal is always the same: homeostasis, or to maintain a balanced environment in the body in response to changes in the world around you.



Brain
Lungs
Vascular System
Muscles
Gastrointestinal Tract
Reproductive Organs
Immune System
Liver
Bone Marrow
Pancreas





CB2

Spleen
Bones
Skin
Immune System
Liver
Bone Marrow
Pancreas

The endocannabinoid system is a part of the human body just like the nervous system, digestive system, and skeletal system. The ECS is built to be self-sufficient and therefore it naturally produces its own cannabinoids. However, science is beginning to discover that the endocannabinoid system needs to be supplemented with additional cannabinoids in order to maintain optimal body functions and homeostasis.

When a person consumes cannabinoids, terpenes, or other chemicals from the cannabis plant, they add additional cannabinoids to the body that can bind with the CB1 or CB2 receptors within the ECS system. Phytocannabinoids are plant substances that stimulate these cannabinoid receptors. Cannabinoids like Delta-9-tetrahydrocannabinol, or THC, and cannabidiol (CBD) and cannabinol (CBN) can bind to specific cannabinoid receptors that help regulate very important processes within the body, like sleep, pain, inflammation, anxiety, and mood. Endocannabinoids and phytocannabinoids are essential to the endocannabinoid system and maintaining balance and overall wellness.



BENEFITS OF **ORIGINAL HEMP**

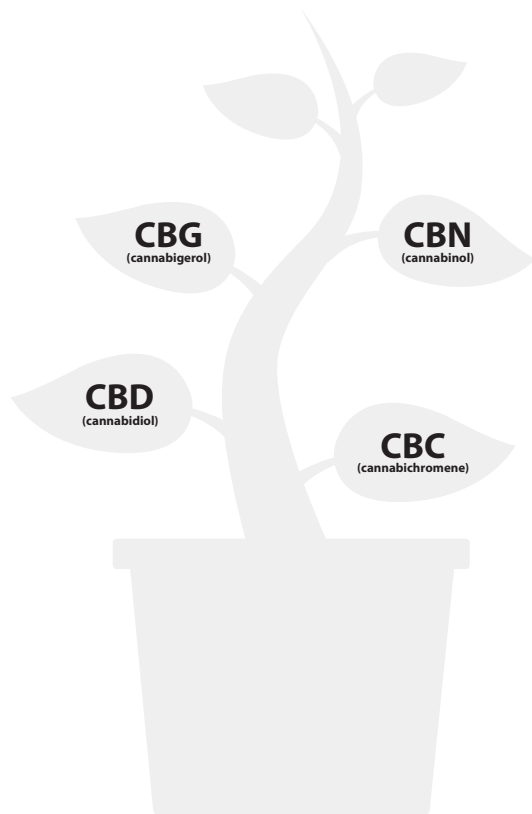
We combined high-quality full spectrum hemp extract with clinically researched ingredients, specially selected terpenes and natural flavors to deliver safe and effective products that provide the results you want in your life.

CANNABINOID BENEFITS:

- **CBG (cannabigerol)** – Known as the “mother cannabinoid” with wide-ranging health benefits for metabolism, mood, and pain or inflammation.
- **CBN (cannabinol)** – Widely accepted as the “sleep cannabinoid” for its multiple benefits to the body’s natural sleep cycle. CBN is created naturally when THCA oxides, thus resulting in a cannabinoid with the sedative, relaxing effects.
- **CBC (cannabichromene)** – Research shows that CBC specifically affects pain and inflammation. CBC binds and interacts with the TRP receptors with modulate pain perception.

CANNABINOID PROFILE

Our full spectrum hemp extract contains multiple cannabinoids, CBD, CBG, CBN, CBC, etc. These cannabinoids act on specific receptors in the endocannabinoid system thereby regulating various body processes such as sleep, pain, anxiety, mood, and inflammation. Including full spectrum hemp extract with a robust cannabinoid profile allows for diverse effects within the body’s endocannabinoid system. Multiple cannabinoids allows these compounds to work together and provide an enhanced effect, often referred to as the **“entourage effect.”**



TERPENES

• **Linalool** - * is a naturally occurring terpene and has often been used in aromatherapy since ancient times for its beneficial health properties. The scent of linalool has been shown to promote feelings of calm and well-being.



(Lavender)

• **Humulene** - * is a natural terpene abundant in hops, sage, ginger and ginseng. Humulene has also been used for centuries in Chinese medicine due to its potential benefits to soothe inflammation.



(Hops)

• **Myrcene** - * is a natural terpene found in essential oils sourced from a multitude of plants. Research into essential oils like Myrcene show it can offer a wide array of benefits including support for the body's pain and inflammatory response.



(Myrtles & Cannabis)

TERPENES



(Citrus Lemon)

• **Limonene** - * is a terpene found in the peels of citrus fruits and in other plants. Studies show that d-limonene can exert a measurable anti-stress action on the body and specifically the nervous system. In addition, Limonene may have mood-elevating effects.



(Pines)

• **Beta-Pinene** - * is a chemical compound found in the cannabis plant, also is found in rosemary, pine trees, and coniferous trees and is known for its woody-green pine-like scent. It has been shown to have health benefits, especially when combined with cannabinoids and other ingredients that influence brain chemistry.



(Peppercorns)

• **Beta-Caryophyllene** - * is a chemical compound found in the cannabis plant, also found in cloves, hops, and rosemary known for its spicy, black pepper scent. Beta-caryophyllene has been shown to help the body's inflammatory response process.

INGREDIENTS

- **PharmaGABA®** - contains natural-source GABA, an inhibitory neurotransmitter in the brain which promotes a calm state of mind and restful sleep. Studies show that PharmaGABA® increases alpha brain waves which can help you fall asleep more quickly and achieve more restful sleep.
- **5-hydroxytryptophan (5-HTP)** - a chemical byproduct of tryptophan. 5-HTP is converted by the body into serotonin, a chemical in the brain that plays an important role in mood, sleep, and appetite. 5-HTP is an amino acid which is essential for manufacturing serotonin in the brain. Serotonin is one of the principal neurotransmitters involved in regulation of mood and anxiety. Research evidence supports the use of 5-HTP to restore serotonin levels and decrease negative effect.
- **Melatonin** - a hormone in your body that plays a role in sleep. Melatonin's main job in the body is to regulate night and day cycles or sleep-wake cycles.
- **Sensoril® Ashwagandha** - a powerful adaptogen derived from a unique blend of both leaves and roots of the Withania Somnifera plant to provide optimal efficacy and bioactive diversity. Sensoril® Ashwagandha may also help lessen anxiety, improve sleep and can significantly reduce cortisol.
- **L-Theanine** - an amino acid that is found in tea leaves. Clinical studies show L-theanine can increase feelings of relaxation and lower the human stress response. Research also shows supplementing with L-theanine can reduce both the psychological and physiological response to stress.
- **Magnesium Citrate** - an essential dietary mineral, necessary in over 600 metabolic functions, that can help the body to manage anxiety and stress. Magnesium can restrict the release of stress hormones and acts as a filter to prevent stress hormones from entering the brain.
- **BioPerine® Black Pepper Fruit Extract** - Piperine is a simple and pungent alkaloid found in the seeds of black pepper fruit. Besides being spicy, piperine helps with absorption of vital nutrients. BioPerine® is the only form of piperine to be patented for its ability to increase the bioavailability of nutrients.
- **Vitamin B6 (Pyridoxine)** - plays an important role in mood regulation. Research shows that Vitamin B6 has a significant modulatory impact on central production of both serotonin and GABA - neurotransmitters which control depression, pain perception, and anxiety. Clinical research shows Vitamin B6 supplementation can reduce stress.





- **Vitamin B5 (Pantothenic acid)** - a component of coenzyme A (CoA). This coenzyme is responsible for several important chemical reactions, including synthesizing lipids into hormones and helping break down carbohydrates, fats and proteins. Vitamin B5 down-regulates the secretion of cortisol (human stress hormone) and helps the body respond better to stressors.
- **Vitamin B12** - plays an important role in human energy production. Numerous clinical studies show the relationship between energy and Vitamin B12 and its role in the essential catabolic process of generating energy within cells.
- **Green Tea Extract** - a concentrated form of green tea which contains the same amount of active ingredients as an average cup of green tea. In terms of energy, green tea extract's biggest benefit comes from its antioxidant power.
- **Coenzyme Q10 (CoQ10)** - a powerful antioxidant that supports energy production inside your cells. It is an essential component of the electron transport chain within the mitochondria and necessary for the synthesis of ATP.
- **Turmeric 95%** - The curcumin in turmeric is an antioxidant scavenger of free radicals and promotes an optimal inflammatory response. Studies show that curcumin supports joint health and promotes a healthy inflammatory response. It also supports mitochondrial function. Preliminary studies also show curcumin may help balance levels of a protein that supports the growth and survival of nerve cells.
- **L-Tyrosine** - a naturally occurring amino acid the body produces which is used as a precursor to noradrenaline and dopamine production. Both dopamine and norepinephrine are synthesized from tyrosine. Research shows that supplementing with L-Tyrosine can increase these important brain chemicals, which affect your mood and stress response.
- **Boswellia Serrata** - a tree native to India which has been used for thousands of years in Ayurveda medicine to address various health conditions. The anti-inflammatory benefits of Boswellia come mainly from Boswellic acids and terpenes. Studies suggest that Boswellic acids work by inhibiting the synthesis of a specific enzyme that increases inflammation in the body.





WATER SOLUBLE CBD

Our Water Soluble CBD has been specially developed as a form of CBD that is more easily absorbed by the body, resulting in more bioavailability of the beneficial cannabinoids. With an increased effectiveness per dosage due to its higher absorption rate, the flavorless Water Soluble CBD provides more wellness benefits per drop. Available from 250mg up to 2000mg in a 30mL bottle.



Great for Daily Use



Non-Psychoactive



USA Grown + Manufactured



2018 U.S. Farm Bill Compliant



I AM **NANO...**

WATER SOLUBLE // CBD

Our **Water Soluble CBD** combines the power of full spectrum hemp extract with a healthy blend of MCT oil and all natural ingredients to give you a feeling of balance and well-being all throughout the day.

Our proprietary water soluble is fast-acting for quicker absorption and more bioavailability, plus it tastes great and easily mixes with your favorite beverage.

- Robust full spectrum cannabinoid profile
- Complementary terpenes for enhanced effect
- US-Grown, CO2 - extracted full spectrum hemp oil

Ingredients: Full Spectrum Hemp Oil (Whole Plant).

Other Ingredients: Purified water, Glycerin, MCT oil, natural flavors, sunflower lecithin, malic acid, citric acid, Gum Acacia, Guar Gum, Xanthan Gum, Vitamin E (Mixed D Alpha Tocopherol Acetate), monk fruit extract, stevia extract and potassium sorbate



**Rich in
Terpenes**



**3rd Party
Lab Tested**



**Cruelty
Free**



**Water
Soluble**



**Doctor
Formulated**



**Nano
Emulsified**



Vegan



Gluten Free



Available strengths:
250mg, 500mg, 1000mg and 2000mg





TINCTURES

Doctor formulated with a unique blend of high quality full spectrum hemp extract, natural terpenes, and flavors that are designed to promote an overall sense of well being. Available in Fresh Berry, Vanilla Dream and Natural flavor from 250mg to 2000mg in a 30mL bottle.



Great for Daily Use



Non-Psychoactive



USA Grown + Manufactured



2018 U.S. Farm Bill Compliant



I AM **FRESH...**

FRESH BERRY // TINCTURE

Our Fresh Berry tincture is doctor formulated with a unique blend of high-quality Full Spectrum Hemp Extract, natural terpenes and flavors that are designed to promote an overall sense of well-being.

Infused with hints of blueberry and raspberry, our Fresh Berry tincture has a bright, refreshing berry flavor.

- Robust full spectrum cannabinoid profile
- Complementary terpenes for enhanced effect
- US-Grown, CO2 - extracted full spectrum hemp oil

Ingredients: Full Spectrum Hemp Oil (Whole Plant), Myrcene Terpene and Limonene Terpene.

Other Ingredients: Medium chain triglycerides oil, Vitamin E (as Mixed D Alpha Tocopherol Acetate) & Berry Flavor.



**Rich in
Terpenes**



**3rd Party
Lab Tested**



Cruelty



**Doctor
Formulated**



Vegan



Gluten Free



I AM A **DREAMER...**

VANILLA DREAM // TINCTURE

Our Vanilla Dream tincture is doctor formulated with a unique blend of high-quality Full Spectrum Hemp Extract, natural terpenes and flavors that are designed to promote an overall sense of well-being.

Infused with the essence of vanilla, our Vanilla Dream tincture has a warm, velvety vanilla flavor.

- Robust full spectrum cannabinoid profile
- Complementary terpenes for enhanced effect
- US-Grown, CO2 - extracted full spectrum hemp oil

Ingredients: Full Spectrum Hemp Oil (Whole Plant), Humulene Terpene and Linalool Terpene.

Other Ingredients: Medium chain triglycerides oil, Vitamin E (as Mixed D Alpha Tocopherol Acetate), Natural & Vanilla Flavor.



**Rich in
Terpenes**



**3rd Party
Lab Tested**



Cruelty



**Doctor
Formulated**

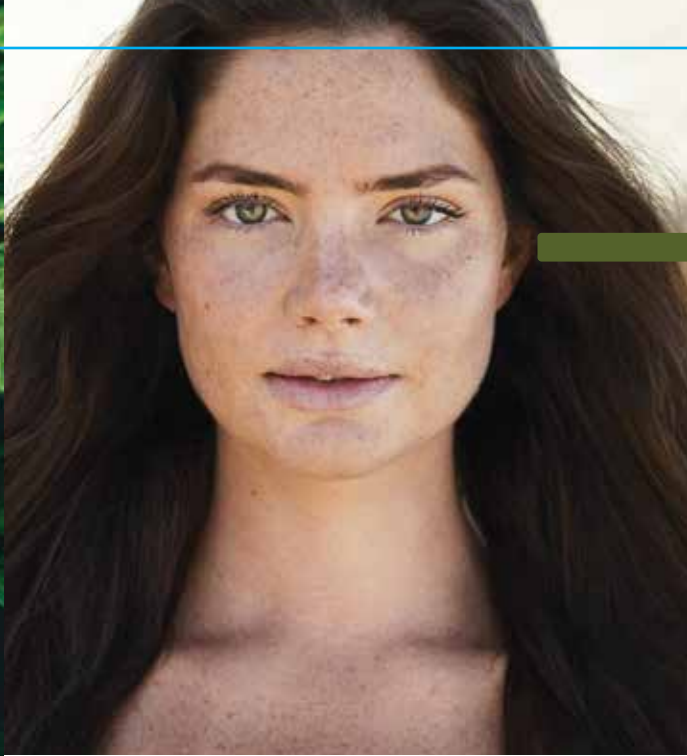


Vegan



Gluten Free

Available strengths:
250mg, 500mg, 1000mg and 2000mg



I AM **NATURAL...**

NATURAL // TINCTURE

Our Natural tincture is doctor formulated with a unique blend of high-quality Full Spectrum Hemp Extract, natural terpenes and flavors that are designed to promote an overall sense of well-being.

Our Natural tincture maintains an earthy, hemp flavor – pure and unadulterated.

- Robust full spectrum cannabinoid profile
- Complementary terpenes for enhanced effect
- US-Grown, CO2 - extracted full spectrum hemp oil

Ingredients: Full Spectrum Hemp Oil (Whole Plant), Linalool Terpene and Humulene Terpene.

Other Ingredients: Medium chain triglycerides oil, Vitamin E (as Mixed D Alpha Tocopherol Acetate) & Natural Flavor.



**Rich in
Terpenes**



**3rd Party
Lab Tested**



Cruelty



**Doctor
Formulated**



Vegan



Gluten Free



Available strengths:
250mg, 500mg, 1000mg and 2000mg



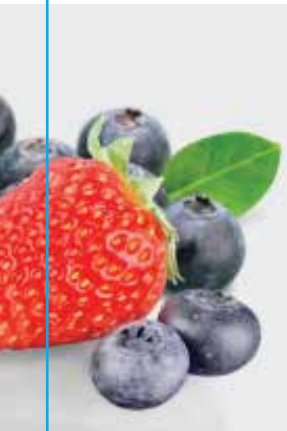
A light gray rectangular block is positioned on the left side of the slide, partially overlapping the white background.

DAILY DOSE // TINCTURES

Try our daily dose to guarantee an accurate dosage of our formulas every time

- Convenient single serve packaging
- Perfect for on-the-go usage
- Fast, discreet, and easy to use
- Individual packs makes it easy to sample different flavors





GUMMIES

Our gummies are all-natural, vegan, with no artificial flavors or colors. Just 25mg of the highest quality full spectrum hemp extract and beneficial, natural supplement ingredients that make you feel good from head to toe.



Great for Daily Use



Non-Psychoactive



USA Grown + Manufactured



2018 U.S. Farm Bill Compliant



I AM **CALM...**

STRESS // GUMMIES

The Original Hemp Stress gummies combine the power of Full Spectrum Hemp Extract, with the relaxing properties of Ashwagandha and L-theanine to smooth out the day's rough edges and Vitamin D3 to elevate your mood.

- Supports Healthy Stress Response
- Promotes Calm & Relaxation
- Provides Mood Support
- No artificial flavors or colors
- Non-Psychoactive
- Great for daily use

Ingredients: Full Spectrum Hemp Extract, L-Theanine, Ashwagandha Extract, and Vitamin D3.
Other Ingredients: Sugar, Corn Syrup, Water Pectin, Natural Flavor, Natural Color, Soy Lecithin, and Citric Acid. **Contains: Soy**



**Doctor
Formulated**



**3rd Party
Lab Tested**



Cruelty



Vegan



Gluten Free

Available strengths: 250mg





CAPSULES

Doctor formulated with a unique blend of high quality full spectrum hemp extract, clinically researched ingredients, and specially selected terpenes delivering safe effective results everyday. Available in relief, stress, and sleep formulas with 750mg active cannabinoids per bottle.



Great for Daily Use



Non-Psychoactive



USA Grown + Manufactured



2018 U.S. Farm Bill Compliant

RELIEF // CAPSULES



Infused with Boswellia Serrata, Turmeric 95% and 25mg Full Spectrum Hemp Extract. Our relief formula capsules are doctor formulated with high-quality ingredients that are designed to help ease everyday aches, pains, and inflammation naturally.

Benefits:

- Helps relieve joint pain
- Supports proper inflammatory response
- Provides antioxidant protection



3rd Party
Lab Tested



Cruelty
Free



Gluten
Free



Doctor
Formulated



Vegan

Supplement Facts

Serving Size: 2 Capsules
Servings Per Container: 30

	Amount Per Serving	% DV ^a
Boswellia Serrata Extract (<i>Boswellic Acid</i>)	300 mg	†
Turmeric Root Extract (<i>Curcuma longa</i>)	150 mg	†
Beta Caryophyllene Terpene	30 mg	†
Full Spectrum Hemp Oil (Whole Plant)	25 mg	†
Bioperine® (<i>Piper nigrum</i>)	5mg	†

[†]Daily Value (DV) not established

OTHER INGREDIENTS: Dicalcium Phosphate, Silicon Dioxide, Magnesium Stearate and Vegetable Cellulose Capsule.



...GIVE ME **RELIEF**



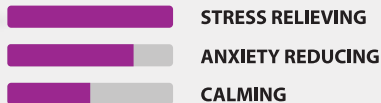
STRESS // CAPSULES



Infused with Sensoril®, L-Theanine and 25mg Full Spectrum Hemp Extract. Our stress formula capsules are doctor formulated with high-quality ingredients that are designed to provide relief from stress-induced symptoms naturally.

Benefits:

- Helps combat anxiety and stress
- Boosts antioxidant activity
- Reduces fatigue and irritability



Supplement Facts

Serving Size: 2 Capsules
Servings Per Container: 30

	Amount Per Serving	% DV ^a
Vitamin B6 (as Pyridoxine HCl)	40 mg	2353%
Pantothenic Acid (as Calcium D-Pantothenate) (Vitamin B5)	40 mg	800%
Magnesium (from Magnesium Citrate)	50 mg	12%
Sensoril® Ashwagandha (Withania somnifera) extract (root and leaf)	200 mg	†
L-Theanine	100 mg	†
5-HTP (5-hydroxytryptophan) (from Griffonia simplicifolia Extract)(Seed)	50 mg	†
Limonene Terpene	30 mg	†
Full Spectrum Hemp Oil (Whole Plant)	25 mg	†
Linalool Terpene	20 mg	†
Myrcene Terpene	10 mg	†

^aDaily Value (DV) not established

OTHER INGREDIENTS: Medium chain triglyceride oil, Vitamin E (as mixed D Alpha Tocopherol Acetate) and Vegetable Cellulose Capsule.



3rd Party
Lab Tested



Cruelty
Free



Gluten
Free



Doctor
Formulated



Vegan



...NO MORE **STRESS**



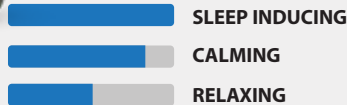
SLEEP // CAPSULES



Infused with PharmaGABA®, Melatonin and 25mg Full Spectrum Hemp Extract. Our proprietary sleep formula capsules are formulated with high quality ingredients that are designed to promote natural, restful sleep when you need it most.

Benefits:

- Helps you stay asleep longer
- Improved sleep quality
- Aids in falling asleep faster



Supplement Facts

Serving Size: 2 Capsules
Servings Per Container: 30

	Amount Per Serving	% DV [†]
Vitamin B6 (as Pyridoxal 5 Phosphate)	10 mg	588%
PharmaGABA® (as gamma-Aminobutyric Acid)	100 mg	†
5-HTP (5-hydroxytryptophan from Griffonia simplicifolia Extract)(Seed)	75 mg	†
L-Theanine	75 mg	†
Full Spectrum Hemp Oil (Whole Plant)	25 mg	†
Myrcene Terpene	15 mg	†
Linalool Terpene	15 mg	†
Melatonin	0.7 mg	†

[†]Daily Value (DV) not established

OTHER INGREDIENTS: Medium chain triglyceride oil, Vitamin E (as mixed D Alpha Tocopherol Acetate), and Vegetable Cellulose Capsule.



3rd Party
Lab Tested



Cruelty
Free



Gluten
Free



Doctor
Formulated



Vegan



...I NEED **SLEEP**





I AM **RELIEVED...**

COOL RELIEF // ROLL ON

Our Original Hemp Cool Relief Roll-On is a powerful blend of Full Spectrum Hemp Extract and natural botanicals which work together synergistically to provide cooling, soothing relief to all areas of the body.

- Helps with everyday discomfort
- Soothing gel provides cooling relief
- Roll-On provides targeted support

Key Ingredients: Organic Aloe Leaf Juice*, Meadowfoam Seed Oil, Menthol Crystals*, Capsicum Fruit Oleoresin*, White Camphor Bark oil*, Sweet Basil Leaf oil*, Black Pepper Oil, Roman Chamomile Flower Oil, Full Spectrum Hemp Extract*, Hemp-Derived Cannabidiol*, German Chamomile Flower Oil, Cinnamon Leaf Oil*, Citronella Oil*, Eucalyptus Leaf Oil, Helichrysum Flower Oil*, Ginger root oil, Pink Grapefruit peel oil, Juniper Berry Oil, Lemongrass oil, Peppermint Oil, Pine Needle Oil, Ravensara Oil, Rosemary Leaf Oil, Spearmint Oil, Wild Oregano Oil, Glycerin, Witch Hazel Water, Organic Alcohol, Phenoxyethanol, Carbomer, Triethanolamine, Tetrasodium Glutamate Diacetate



Available strengths:
333mg, 500mg, 1000mg, 2000mg



**3rd Party
Lab Tested**



**Cruelty
Free**



**Gluten
Free**



**Organic Aloe
Leaf Juice**



**Capsicum Fruit
Oleoresin**



**Menthol
Crystals**



**Eucalyptus
Leaf oil**



**Doctor
Formulated**



Vegan



**White
Camphor**



**Ginger
Root Oil**



Lemongrass



Chamomile

COMPREHENSIVE // ANALYTICAL LAB TESTING

All Original Hemp products are US Farm Bill compliant and undergo comprehensive 3rd party lab testing for potency, pesticides, solvents, mycotoxins, heavy metals and contaminants. Lab Results are available for every batch by scanning the QR code on the product packaging.



PREMIUM STORE // DISPLAY OPTIONS

Our Multitude of point of sale of purchase display options give you the perfect way to showcase what the future of CBD has to offer.

IN STORE // MARKETING MATERIALS

Brochure, Flavor Menu, Take Me Card, Table Tents, Posters and more...







* These statements have not been evaluated by the Food and Drug Administration. This product is not intended to diagnose, treat, cure, or prevent any disease.

I AM.

YOU ARE.

TOGETHER WE ARE.

*Original*TM
HEMP

1729 Avenida Del Sol, Boca Raton, FL 33432 USA
+1.866.407.1164
originalhemp.com
@originalhemp  
info@originalhemp.com

ARISE BIOSCIENCE

A  **TERRASCEND** company (OTC: TRSSF)