

# CERTIFICATE OF ANALYSIS



Order #: 33690  
Order Name: ORIGINAL HEMP  
SLEEP CAPSULES  
Batch#: 44681  
Received: 07/22/2019  
Completed: 07/25/2019

Arise Bioscience  
4855 Technology Way, Suite 500  
Boca Raton FL, 33431  
(866) 407-1164



## TERPENES: TOTAL (1.159%)

Headspace GCMS - Shimadzu GCMS QP2020 with HS20

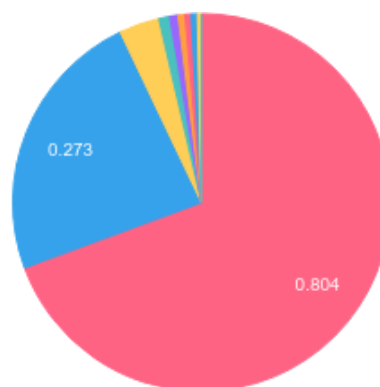
GSL SOP 404

Prepared: 07/23/2019 22:40:30

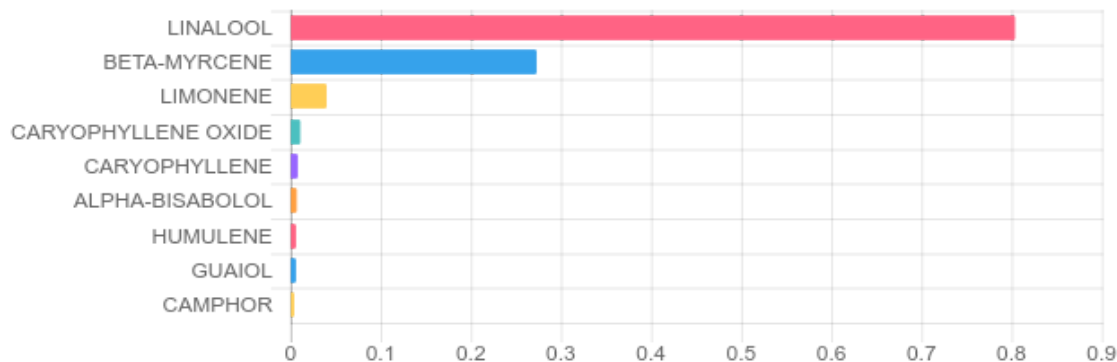
Uploaded: 07/24/2019 16:32:38

Terpene	Results (%)	LOQ (%)	LOD (%)
ALPHA-BISABOLOL	0.007%	0.0067%	0.0063%
BETA-MYRCENE	0.273%	0.0067%	0.0063%
CAMPHOR	B/LOQ	0.0067%	0.0063%
CARYOPHYLLENE	0.008%	0.0067%	0.0063%
CARYOPHYLLENE OXIDE	0.011%	0.0067%	0.0063%
GUAIOL	B/LOQ	0.0067%	0.0063%
HUMULENE	B/LOQ	0.0067%	0.0063%
LIMONENE	0.040%	0.0067%	0.0063%
LINALOOL	0.804%	0.0067%	0.0063%

## Terpenes Breakdown



## Top Terpenes Results:



## Tested for but not present:

ALPHA-PINENE, CAMPHENE, SABINENE, BETA-PINENE, ALPHA-PHELLANDRENE, 3-CARENE, ALPHA-TERPINENE, TRANS-BETA-OCIMENE, CIS-BETA-OCIMENE, EUCALYPTOL, GAMMA-TERPINENE, TERPINOLENE, SABINENE HYDRATE, FENCHONE, FENCHOL, ISOPULEGOL, ISOBORNEOL, MENTHOL, BORNEOL, TERPINEOL (MIX OF ISOMERS), GAMMA-TERPINEOL, NEROL, GERANIOL, PULEGONE, GERANYL ACETATE, ALPHA-CEDRENE, VALENCENE, CIS-NEROLIDOL, TRANS-NEROLIDOL, CEDROL



4001 SW 47th Avenue Suite 207  
Davie, FL 33314  
1-833-TEST-CBD  
info@greenscientificlabs.com



Dr. Andrew Hall, Ph.D., CSO & Lead Director

Green Scientific Labs uses its best efforts to deliver high quality results and to verify that the data contained therein are based on sound scientific judgment and levels listed are guidelines only and all data was reported based on standard laboratory procedures and deviations. However Green Scientific Labs makes no warranties or claims to that effect and further shall not be liable for any damage or misrepresentation that may result from the use or misuse of the data contained herein in any way. Further, Green Scientific Labs makes no claims regarding representations of the analyzed sample to the larger batch from which it was taken. Data and information in this report are intended solely for the individual(s) for whom samples were submitted and as part of our strict confidentiality policy, Green Scientific Labs can only discuss results with the original client of record.