

MORVÉLO<sup>®</sup>  
*Customs*  
WORKSHOP



WORKSHOP/MANUAL/2020  
PERFORMANCE CUSTOM CLOTHING EXCLUSIVELY BY MORVÉLO



A man with a beard and short brown hair, wearing a dark blue cycling jersey with 'MASON' and a logo on the chest, and matching blue cycling shorts. He is wearing pink gloves and is standing next to an orange and black bicycle. The background is dark, suggesting it is nighttime. The text is overlaid on the right side of the image.

***“IT’S THE QUALITY OF  
COMMUNICATION FROM  
CONCEPT TO FINAL PRODUCT  
THAT STANDS OUT.”***

***DOM MASON - MASON CYCLES***



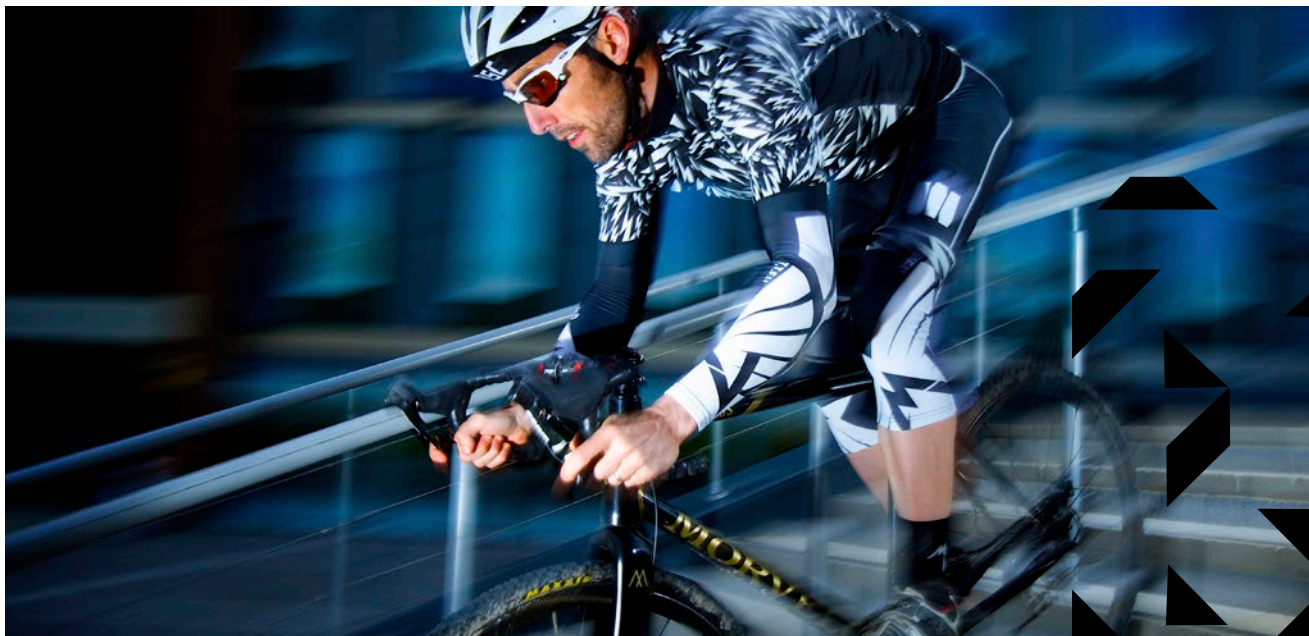


# EXCLUSIVELY BY MORVÉLO

With over 10 years experience in designing and developing award winning cycle clothing, and 25 years of graphic design know-how, we are perfectly placed to bring your ideas to life. Using the same high specification fabrics as our retail range, your kit will have the distinct premium look & feel Morvélo has a worldwide reputation for.

All of us at Morvélo are riders. Our clothing is tested daily on our commutes and longer weekend rides so we are supremely confident in the performance and comfort of our range. Our garments are guaranteed by many miles of use by professional athletes so whether you're looking for a kit for your local team, organising a ride or just want to look good when you're out riding with your friends, we have you covered.

Morvelo Customs Workshop offers a full range of items to custom create your look as we all know there's nothing better than riding in perfectly matched clothing!



MORVÉLO®





**FREE  
DESIGN  
SERVICE!**

**MORVÉLO<sup>®</sup>**  
*Customs*  
WORKSHOP

***“MORVÉLO SQUEEZE OUT  
SOME QUALITY KIT.  
THEY KNOW WHAT’S UP.”***

**DEATH SPRAY CUSTOM**





**“ I WAS EXTREMELY IMPRESSED WITH THE ATTENTION TO DETAIL AND QUALITY OF THE MORVELO CLOTHING RANGE ”**

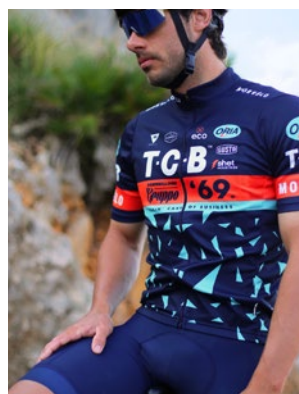
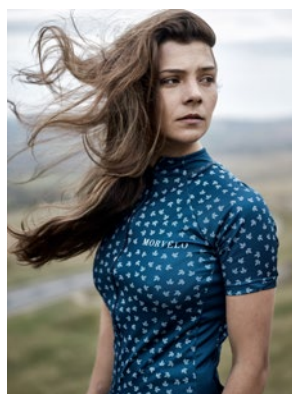
**ADAM MOORE,  
MORVELO BASSO TEAM MANAGER.**



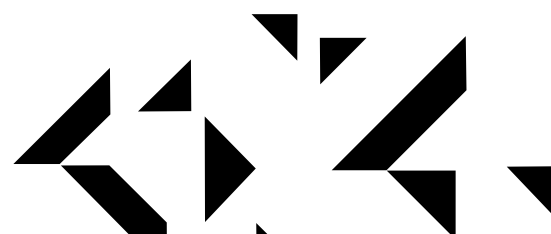
Being designers ourselves, we know how important it is to make sure everything looks ‘*just right*’. We can supply you with sample kit to test the fit, feel and look. Once you’re happy we move onto the design.

**“...IT’S UP TO YOU,  
YOU’RE THE BOSS!”**

We make the process of designing your kit as easy as possible, whether you have an existing design or would like us to create something bespoke. Our design service is free including revisions\*. We are here to discuss all your possibilities and offer help and expertise if needed. However, at the end of the day its up to you: You’re the boss!



\* two revisions are free and included in the package however any subsequent revisions are chargeable





# OUR PROCESS

## CONTACT US

First things first, drop us an email outlining what you'd like or fill in the form on the website. Let's chat and get a good idea of what you're after.

## NEED SAMPLES?

Let us know your details, and if needed we can get some samples out to you to try for fit & comfort.

## THE DESIGN PROCESS

We're known for our unique designs so let's make you something unique. Use our free design service or we can use any existing artwork. You're the boss!.

## OUR MINIMUMS

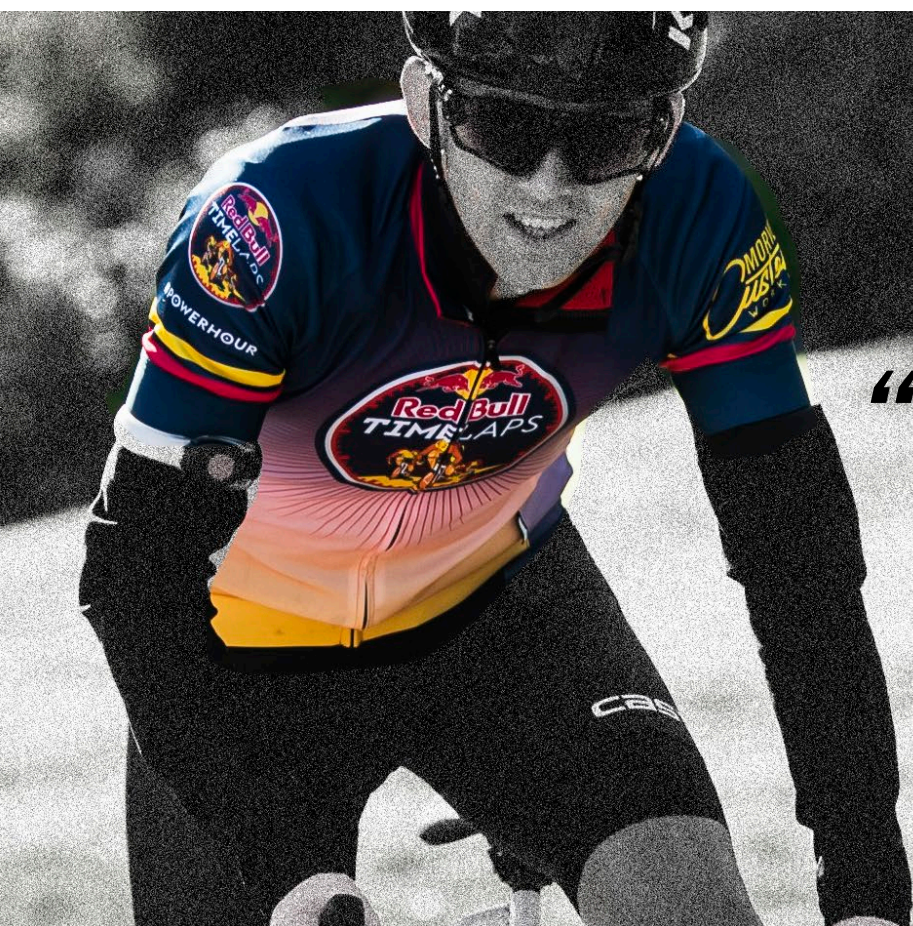
We set our minimums low so you can get as little or as much as you want.

## THE PAYMENT

Once you're happy and everything's confirmed we will contact you for a 50% deposit before production begins with the final 50% due before shipping.

## YOUR DELIVERY

With a guaranteed delivery date you can expect your order in 4-5 weeks.



***“A JOY TO WORK WITH:  
GREAT COMMUNICATION,  
DELIVERED ON-TIME AND  
INSTRUMENTAL AT NAILING  
THE EXACT COLOURS WE  
WANTED. RECOMMENDED.”***  
**REDBULL UK**





## CLIENTS





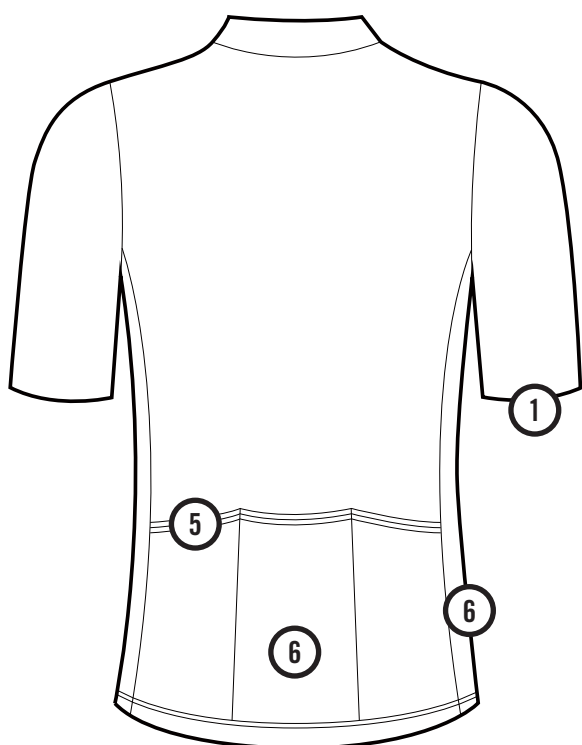
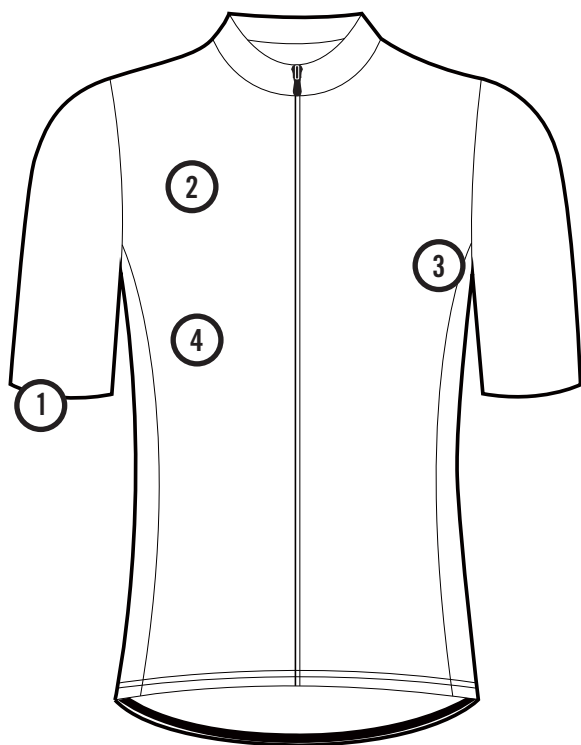


**“REFRESHING  
SIMPLICITY”**

**RCUK**



# CLASSIC ROAD JERSEY



Whether you want to hit the tarmac or head somewhere a little less predictable and discover new trails, the Morvélo Short Sleeve Jersey is designed to keep you in comfort, complete with an exclusive and fresh design to catch the eye. The BioActive treatment carries antibacterial properties for improved, long-lasting freshness, while at the same time wicking sweat away from the body quickly and effectively. The regular cut of the jersey makes it great for all shapes and sizes and it's perfect paired with racing shorts – or go more casual and match with your favourite baggies.

At the back of the jersey, three large cargo pockets keep your essentials and nutritional items within easy reach at all times, and reflective details keep you safe and visible to other road users when the light begins to fade. While it may be called our 'standard' jersey it's anything but: it excels across any terrain and for any style of cycling, so whatever your two-wheeled passion pull your Morvélo Standard jersey on and get stuck into a new adventure.

## FEATURES

1/ LONG RAW CUT AERO SLEEVES

2/ LIGHTWEIGHT AND BREATHABLE

3/ ANTIBACTERIAL

4/ BIOACTIVE WICKING TREATMENT

5/ THREE LARGE REAR CARGO POCKETS

6/ REFLECTIVE DETAILS

100% POLYESTER

SIZES: XS-XXXL

**MORVÉLO<sup>®</sup>**  
*Customs*  
WORKSHOP



A close-up photograph of a man's torso wearing a black cycling jersey. The jersey features a repeating pattern of colorful geometric shapes, including rectangles and 'X' marks in shades of teal, red, and grey. The brand name 'MORVÉLO' is printed across the chest in large, white, stylized capital letters. The man has a short beard and is wearing a small hoop earring. The background is a bright, sunny outdoor setting with a blurred mountain range.

***“FOR MORVÉLO TO BE PRODUCING  
JERSEYS OF THIS QUALITY  
AND TAKING ON THE  
BIG BRANDS FOR VALUE”  
IS IMPRESSIVE.***

***ROAD CC***



# N<sup>TH</sup> SERIES ROAD JERSEY

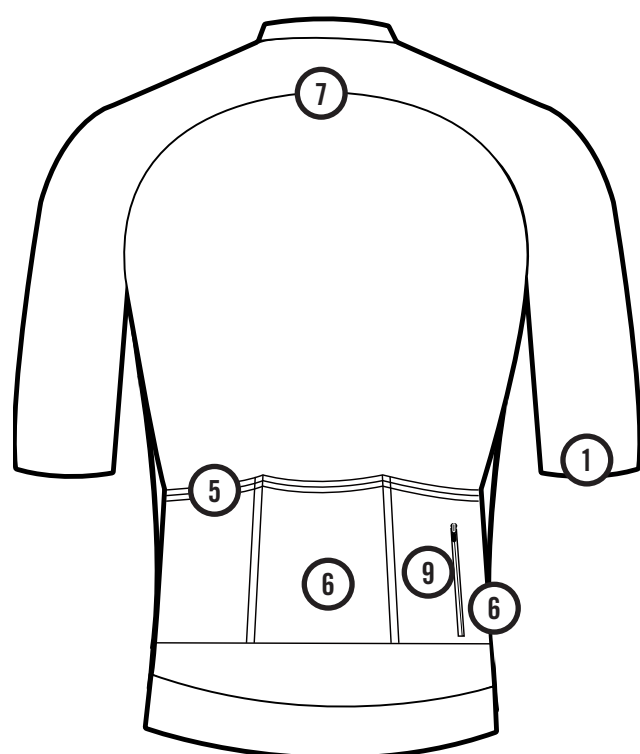
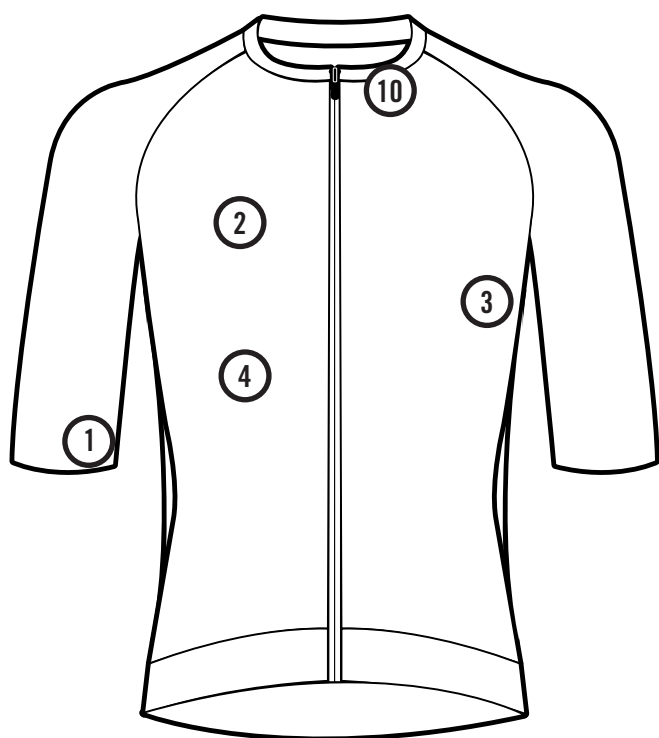
Using a combination of 3 different fabrics, the Nth Series Short Sleeve Jersey combines fast-drying breathability and an aerodynamic race cut for high-speed comfort when you're training and competing. We use a side panel construction and a one piece curved shoulder and sleeve combination with seamless underarm panels to tailor the aero fit perfectly and enabling the exceptionally fast-wicking properties of the Dri-Clim® polyester to work at its best. Dri-Clim® is not a chemical treatment but instead utilises a unique fabric weave and yarn, so this will never wash out.

Morvelo Nth Series Short Sleeve Jerseys not only offer a unique blend of fabrics ensuring a superb fit and superb performance but are finished off with Morvelo's trademark stylish graphic designs. High-speed riding has never looked so stylish.

## FEATURES

- 1/ LONG RAW CUT AERO SLEEVES
  - 2/ LIGHTWEIGHT AND BREATHABLE
  - 3/ ANTIBACTERIAL
  - 4/ BIOACTIVE WICKING TREATMENT
  - 5/ THREE LARGE REAR CARGO POCKETS
  - 6/ REFLECTIVE DETAILS
  - 7/ RACE FIT WITH CURVED SHOULDER PANEL
  - 8/ SUN PROTECTION FACTOR 50
  - 9/ ZIPPED SECURITY POCKET
  - 10/ LOW COLLAR
  - 11/ EXTREMELY FAST DRYING
- 100% POLYESTER
- SIZES: XS-XXXL

**MORVELO®**  
*Customs*  
WORKSHOP







***“THE MORVÉLO SHORTS  
ARE BRILLIANT MAKING  
PREMIUM’ £180 MODELS,  
LOOK A LITTLE SILLY.”***

***ROAD CYCLING UK***

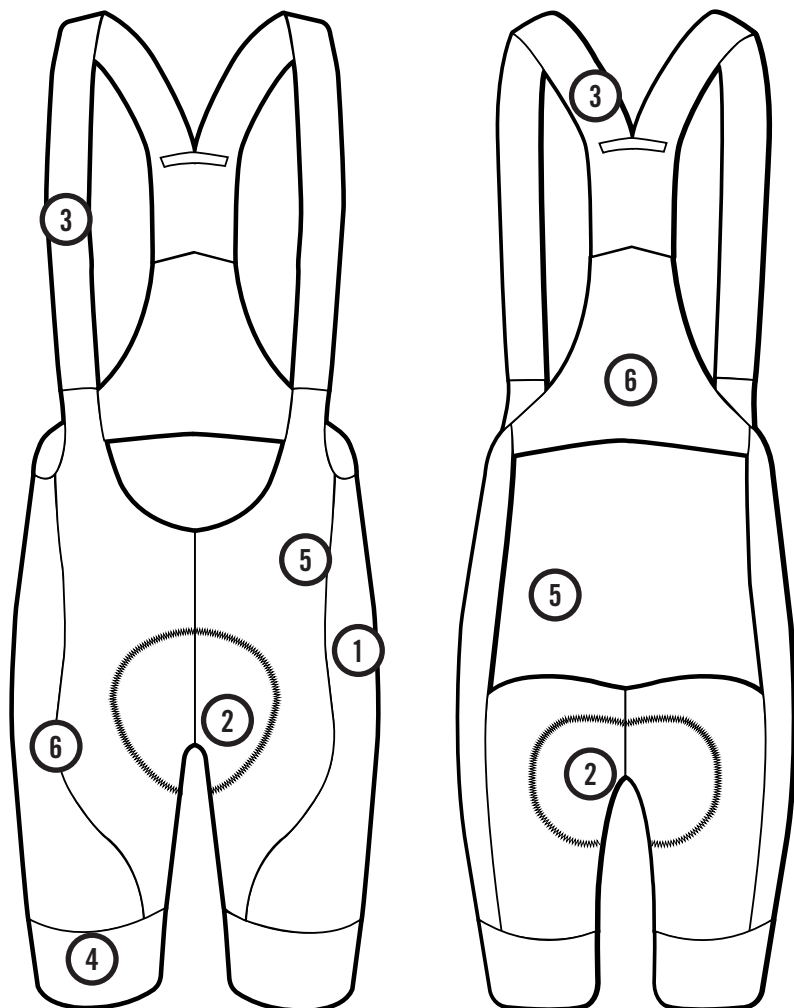


# CLASSIC BIB SHORTS

A comfortable pair of cycling shorts is a cycling essential. Get the right pair and you'll cover countless miles and hours in complete comfort. Get them wrong and every mile will be painful. The crucial element in any bib short is the chamois, so we have always used an exclusive Italian pad that is responsible for Morvelo shorts being classed as the most comfortable. Made from soft, durable Italian lycra they offer a compression fit to ease muscle fatigue and flat lock stitching to prevent chafing.

The pad is created from 2 levels of high-density memory foam using the latest in aircell technology to reduce pressure points. The first level provides maximum shock absorption for the hip and pelvic bones leaving the perineal area pressure-free for additional comfort. The second level allows for supreme ventilation and moisture management. The chamois is then covered with a soft but resilient outer layer.

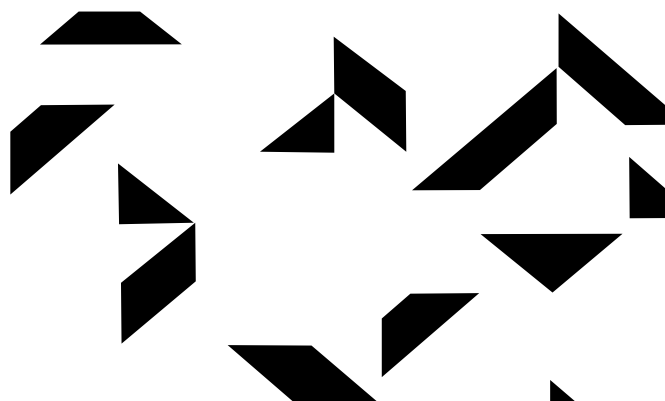
The Soft Silicone leg bands keep a firm yet gentle grip around the legs and the high stretch perforated mesh on the bibs provides maximum flexibility whilst keeping everything exactly in its place. No matter what or where you ride, these shorts will keep you rolling in comfort even while your legs and lungs are screaming at you to stop.



## FEATURES

- 1/ PREMIUM LYCRA
- 2/ AWARD-WINNING DUAL LAYER PERFORATED CHAMOIS
- 3/ LIGHTWEIGHT STRAPS FOR MAXIMUM VENTILATION
- 4/ SOFT SILICONE LEG BANDS
- 5/ FLATLOCK STITCHING
- 6/ PANELLED CONSTRUCTION FOR SUPERIOR FIT
- 7/ SUN PROTECTION FACTOR 50

**MORVÉLO<sup>®</sup>**  
*Customs*  
WORKSHOP

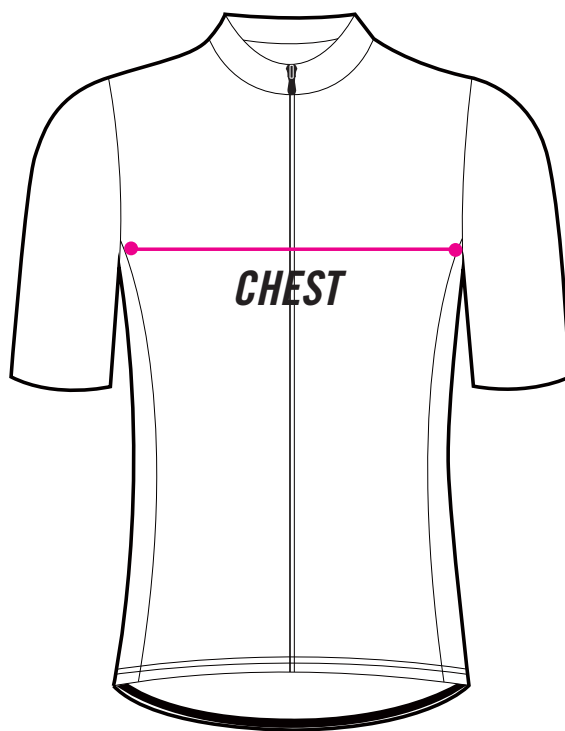




# SIZING GUIDE

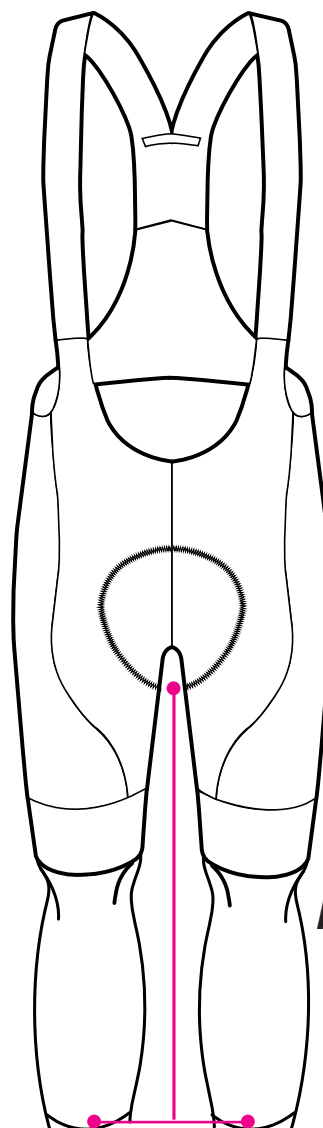
## MENS TOPS

<i>SIZE</i>	<i>CHEST</i>
XS	<33
S	33-36
M	36-39
L	39-41
XL	41-43
XXL	43-45



## MENS BOTTOMS

<i>SIZE</i>	<i>WAIST</i>	<i>INSIDE LEG</i>
XS	28	30
S	30	32
M	32	32
L	34	34
XL	36	34
XXL	38	36



## MEASURING TIPS

### CHEST

Using a soft measuring tape, bring the tape across your back under each arm, around the front. For women, measure the widest point of the bust. For men, measure around the largest part of your chest.

### WAIST

Bend to one side to find natural indentation in torso. This is your natural waist. Run tape around waistline, keeping tape parallel with floor.

### HIP

Stand on a level surface with feet together. Measure around fullest part of hips and bottom (approximately 7" - 9" below waistline), keeping tape parallel with floor.



## WOMENS TOPS

SIZE	CHEST	WAIST	HIPS
XS	<32	26	36
S	34	28	38
M	36	30	40
L	38	32	42
XL	40	34	44

## WOMENS BOTTOMS

SIZE	WAIST	HIPS
XS	26	36
S	28	38
M	30	40
L	32	42
XL	34	44

## SIZE CONVERSION

	XS	S	M	L	XL
UK	8	10	12	14	16
US	4	6	8	10	12
EURO	36	38	40	42	44
JAPAN	9	9	13	15	17

**MORVÉLO<sup>®</sup>**  
*Customs*  
 WORKSHOP







## PRICES



## TOPS

### NTH SERIES JERSEY: RRP £100

Inspired by racing, Morvelo's NTH Series Short Sleeve Jersey is lightweight, durable and suited to the intense nature of competition with an aerodynamic fit and robust construction. Ideal for the racers and all you hard riders out there.

1-4:	£110	EACH
5-19:	£67	EACH
20-49:	£58	EACH
50-99:	£55	EACH
100+:	£52	EACH

### STANDARD JERSEY: RRP £75

Our standard jersey is perfect for riders looking for a great all-round cycle jersey. Utilising a lightweight and robust fabric to create an essential product whether you're riding road, off road, sportives or for leisure. Developed to perfection.

1-4:	£85	EACH
5-19:	£56	EACH
20-49:	£49	EACH
50-99:	£47	EACH
100+:	£45	EACH

### SHORT SLEEVE SPEEDSUIT: RRP £170

Look fast, feel fast, ride fast. Morvelo's performance-driven SpeedSuit combines our lightweight and highly breathable Superlight Jersey with our award-winning and durable Bib Shorts.

1-4:	£180	EACH
5-19:	£110	EACH
20-49:	£95	EACH
50-99:	£90	EACH
100+:	£85	EACH

### SHORT SLEEVE BASELAYER: RRP £35

Our Short Sleeve Baselayer is quick to wick away sweat before it causes discomfort and thanks to its close to the body fit it slips easily under any cycling jersey you wish to pair it with.

1-4:	£45	EACH
5-19:	£31	EACH
20-49:	£28	EACH
50-99:	£26	EACH
100+:	£24	EACH

**MORVELO®**  
*Customs*  
WORKSHOP





## BOTTOMS & ACCESSORIES

### NTH SERIES BIB SHORTS: RRP £125

A unique blend of fabrics and high-quality pad ensures superb fit and performance from the Morvelo Nth Series Bib shorts. Designed for those riders who demand the very best shorts in order to ensure their riding comfort all day.

1-4:	£135	EACH
5-19:	£78	EACH
20-49:	£76	EACH
50-99:	£72	EACH
100+:	£68	EACH

### STANDARD BIB SHORTS: RRP £100

Comfort and great fit are guaranteed with Morvelo's award-winning Bib Shorts. Using an exceptionally comfortable Italian chamois and durable premium lycra to provide an essential product in any cyclist's wardrobe.

1-4:	£110	EACH
5-19:	£69	EACH
20-49:	£63	EACH
50-99:	£58	EACH
100+:	£56	EACH

### CYCLE CAP: RRP £15

A classic, portable and essential cycling accessory keeping the sun and rain away from the eyes. Easily folded and placed within a pocket, it can be used all year round to protect from the elements.

1-4:	£26	EACH
5-19:	£17	EACH
20-49:	£13	EACH
50-99:	£11	EACH
100+:	£9	EACH

### ARM SCREENS: RRP £25

Protect your arms from the sun and keep the chill off on the downhill with our lightweight and flexible arm screens.

1-4:	£30	EACH
5-19:	£19	EACH
20-49:	£15	EACH
50-99:	£13	EACH
100+:	£11	EACH

**FOR PRICING OF THE COMPLETE  
RANGE OF PRODUCTS PLEASE  
EMAIL: [OLI@MORVELO.COM](mailto:OLI@MORVELO.COM)**





PERFORMANCE CUSTOM CLOTHING DESIGNED EXCLUSIVELY  
FOR YOU BY MORVÉLO

*"Self-funded from the start, we put everything back  
into Morvélo to keep doing what we love.  
We pride ourselves on our independence.  
We follow our hearts, develop the products we truly  
believe in, and still can't get over the buzz when we  
see someone wearing Morvélo kit."*

MORVELO.COM / PAGES / MORVELO-CUSTOMS-WORKSHOP