

Hooke Road Foot Pedal Side Running Board Step Nerf Bars For Jeep Wrangler JK 4DR 07-18

Installation Time: 30 Minutes per side

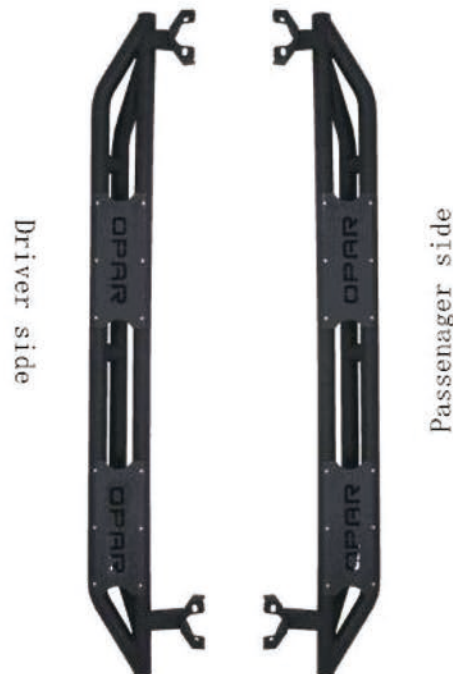
Tools Required:

- ✓ 1/2 wrench
- ✓ 13mm Socket wrench
- ✓ Power Drill with 3/8" Drill Bit

Installation Instructions:

Step1

Unbox Nerf Step and distinguish the Passenger and Driver side Steps. Be sure to set them on the correct side before starting your installation. This will ensure you have them correctly orientated before beginning.

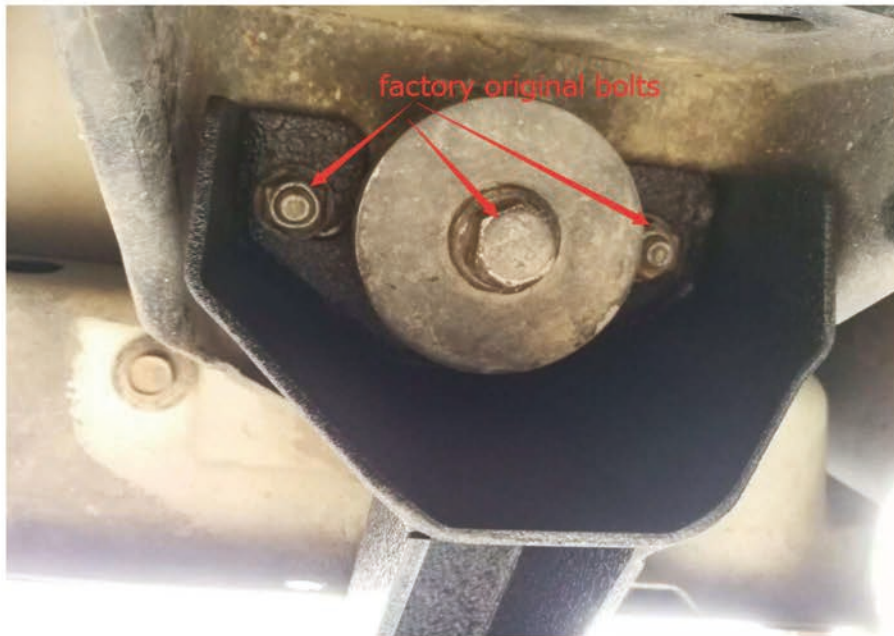


Step2

Remove Factory Running Boards if necessary.

Step3

Place the running board in position so the top bracket is touching the pinch weld. Double check the lower brackets are lined up with the factory holes underneath as well. Note:All screws and nuts are used in the original car. If you lose the middle of the screw gasket, just install the two screws next to it.



Step4

Installation is complete.

