



The Qing Dynasty

(1644-1912)



仿清康熙粉红地珐琅彩花卉纹碗

BOWL.

Porcelain bowl with 'flowers' in overglaze polychrome enamels on pink ground.

Qing Dynasty, reign of the Kangxi emperor (1662-1722).

Diam. 15 cm

BL4-0132



仿清康熙青花锦绣富贵纹凤尾尊

ZUN.

*Blue and white porcelain 'phoenix tail' zun, decorated with birds and flowers.
Qing Dynasty, reign of the Kangxi emperor (1662-1722).*

H. 49.5 cm

Z1-0133



仿清康熙青花松鹤延年图凤尾尊

ZUN.

Blue and white porcelain 'phoenix tail' zun, decorated with cranes and deer.
Qing Dynasty, reign of the Kangxi emperor (1662-1722).

H. 46 cm

Z1-0134



仿清康熙青花花鸟纹鱼尾瓶

VASE.

*Blue and white porcelain vase decorated with flower and bird.
Qing Dynasty, reign of the Kangxi emperor (1662-1722).*

H. 46 cm

O1-0135



仿清康熙青花一路连升纹将军罐

JAR.

Porcelain lidded jar with 'lotus and leaf' in underglaze blue.
Qing Dynasty, reign of the Kangxi emperor (1662-1722).

H. 57.5 cm

J1-0136



仿清康熙青花锦鸡牡丹纹将军罐

JAR.
Porcelain lidded jar with 'peony and mallard' in underglaze blue.
Qing Dynasty, reign of the Kangxi emperor (1662-1722).
H. 59 cm

J1-0137



仿清康熙五彩耕织图棒槌瓶

VASE.
*Wucai porcelain 'silk production'
rouleau vase.*
*Qing Dynasty, reign of the Kangxi
emperor (1662-1722).*
H. 48 cm

R6-0138



仿清康熙白地矾红描金
火龙纹长颈天球瓶

VASE.
*Porcelain globular vase with
gilt-decorated fire dragon in
iron-red on white ground.*
*Qing Dynasty, reign of the
Kangxi emperor (1662-1722).*
H. 42.4 cm

T5-0140



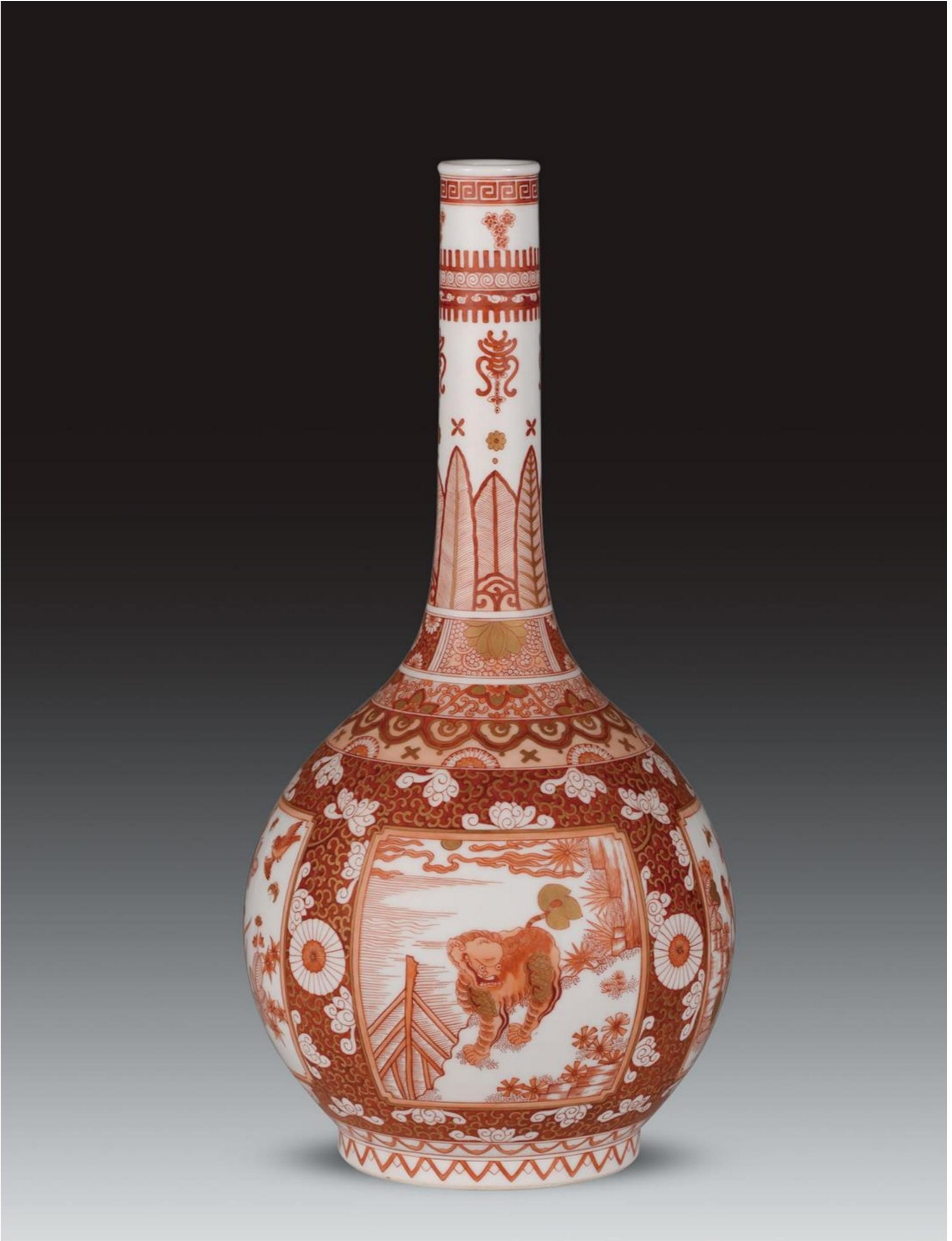
仿清康熙五彩八仙人物棒槌瓶

VASE.

Wucai porcelain 'fu lu shou star' rouleau vase.

Qing Dynasty, reign of the Kangxi emperor (1662-1722).

R6-0139



仿清康熙矾红金彩开光花鸟纹长颈瓶

VASE.

*Porcelain globular vase with decoration in iron-red and gilt.
Qing Dynasty, reign of the Kangxi emperor (1662-1722).*

H. 41.5 cm

T5-0141



仿清康熙青花竹林七贤纹长颈瓶

VASE. Blue and white 'seven scholars scene' porcelain globular vase.
Qing Dynasty, reign of the Kangxi emperor (1662-1722).
H. 44 cm

T1-0142



仿清康熙斗彩绿龙纹盘

PLATE. Doucai porcelain plate with dragon in overglaze green enamels. Qing Dynasty, reign of the Kangxi emperor (1662-1722).

PD4-0143



仿清雍正粉彩福寿八桃纹橄榄瓶

VASE.

Porcelain vase with 'eight peaches' in famille rose.

Qing Dynasty, reign of the Yongzheng emperor (1723-1735).

H. 40.4 cm

G2-0049



仿清雍正青花云龙纹天球瓶

VASE.

*Porcelain globular vase with 'dragon and clouds' in underglaze blue.
Qing Dynasty, reign of the Yongzheng emperor (1723-1735).*

T1-0144



仿清雍正斗彩加粉彩垂肩
如意瑞果纹梅瓶

VASE.
Doucai porcelain 'sanduo' prunus vase.
Qing Dynasty, reign of the Yongzheng
emperor (1723-1735).
H. 34.5 cm

M3-0145



仿清雍正斗彩团花纹天球瓶

VASE.
Doucai globular vase with interlocking
flowers design.
Qing Dynasty, reign of the Yongzheng
emperor (1723-1735).
H. 52.5 cm

T3-0035



仿清雍正青花缠枝莲鸂耳尊

ZUN.

Double-ear zun with interlocking lotus in underglaze blue.
Qing Dynasty, reign of the Yongzheng emperor (1723-1735).

H. 47 cm

Z1-0053



仿清雍正粉彩桃花纹胆瓶

VASE.
*Porcelain vase with peach blossom in
famille rose.*
*Qing Dynasty, reign of the Yongzheng
emperor (1723-1735).*
H. 37.6 cm

D2-0041



仿清雍正粉彩牡丹纹盘口瓶

VASE.
*Porcelain vase with 'peony' vase in
overglaze famille rose.*
*Qing Dynasty, reign of the Yongzheng
emperor (1723-1735).*
H. 27.5 cm

P2-0146



仿清雍正黄地青花桃蝠纹橄榄瓶

VASE.

Porcelain vase with 'peach and bats' in underglaze blue on yellow ground.
Qing Dynasty, reign of the Yongzheng emperor (1723-1735).

H. 30 cm

G1-0147



仿清雍正珊瑚红地珐琅彩花鸟瓶

VASE.
Garlic-mouth porcelain vase painted with 'floral and bird' in overglaze polychrome enamels on red ground.
Qing Dynasty, reign of the Yongzheng emperor (1723-1735).

ST4-0148



仿清雍正绿地粉彩花鸟纹撇口瓶

VASE.
Porcelain vase painted with 'floral and bird' in famille rose on green ground.
Qing Dynasty, reign of the Yongzheng emperor (1723-1735).

P2-0149



仿清雍正黄地粉彩福寿万代图葫芦瓶

VASE.

Double-Gourd porcelain vase painted in overglaze famille rose on yellow ground.
Qing Dynasty, reign of the Yongzheng emperor (1723-1735).

H. 48 cm

HL2-0150



仿清雍正粉彩花鸟纹抱月瓶

*MOONFLASK.
Porcelain moonflask with
'flowers and birds' in overglaze
famille rose.
Qing Dynasty, reign of the Yongzheng
emperor (1723-1735).
H. 48 cm*

B2-0151



仿清雍正青花缠枝花纹
长颈天球瓶

*VASE.
Blue-and-white globular vase with
interlocking lotus designs.
Qing Dynasty, reign of the Yongzheng
emperor (1723-1735).
H. 35.8 cm*

T1-0031



仿清雍正柠檬黄地珐琅彩浮雕六方花瓶

VASE.

Porcelain hexagonal vase painted in overglaze polychrome enamels on yellow ground.
Qing Dynasty, reign of the Yongzheng emperor (1723-1735).

O4-0152



仿清雍正斗彩八吉祥纹盘

DISH.

Doucai 'bajixiang' porcelain dish.

Qing Dynasty, reign of the Yongzheng emperor (1723-1735).

PD3-0153



仿清雍正粉彩过墙八桃纹盘

DISH.
Porcelain dish painted with 'peach and bats' in overglaze famille rose.
Qing Dynasty, reign of the Yongzheng emperor (1723-1735).

PD2-0154



仿清雍正珐琅彩黄底兰石图碗

BOWL.

Porcelain bowl painted with 'orchid and rocks' in polychrome enamels on yellow ground.

Qing Dynasty, reign of the Yongzheng emperor (1723-1735).

Diam. 10.3 cm

BL4-0155



仿清雍正珐琅彩竹雀图碗

BOWL.

Porcelain bowl painted with 'bamboo and birds' in polychrome enamels.

Qing Dynasty, reign of the Yongzheng emperor (1723-1735).

Diam. 15 cm

BL4-0156



仿清雍正青花矾红彩海水龙纹盘

DISH.

*Porcelain dish decorated with 'waves' in underglaze blue and 'dragon' in iron-red.
Qing Dynasty, reign of the Yongzheng emperor (1723-1735).*

H. 8.5 cm Diam. 47.5 cm

PD1-0086



仿清雍正珐琅彩胭脂红底
腊梅纹碗

BOWL.
Porcelain bowl with prunus in polychrome enamels on ruby-ground. Qing Dynasty, reign of the Yongzheng emperor (1723-1735). Diam. 10.2 cm

BL4-0157



仿清雍正珐琅彩芦雁诗句碗

BOWL.
Porcelain bowl with 'wild goose and floral' in polychrome enamels. Qing Dynasty, reign of the Yongzheng emperor (1723-1735). Diam. 8.1 cm

BL4-0158



仿清雍正珐琅彩题诗过墙梅纹盘

DISH.

*Porcelain dish decorated with 'plum blossoms and poem' in polychrome enamels.
Qing Dynasty, reign of the Yongzheng emperor (1723-1735).*

Diam. 17.2 cm

PD4-0159



仿清雍正粉彩题花卉纹盖碗

BOWL.
 Porcelain lidded bowl with peony in
 overglaze polychrome famille rose.
 Qing Dynasty, reign of the Yongzheng
 emperor (1723-1735).

BL2-0160



仿清雍正斗彩蝶恋花盖碗

BOWL.
 Doucai porcelain lidded bowl decorated
 with butterfly and flower.
 Qing Dynasty, reign of the Yongzheng
 emperor (1723-1735).

BL3-0161



仿清雍正青花山水白地茶壶

TEAPOT.
 Porcelain teapot with 'landscape' in
 underglaze blue on white ground.
 Qing Dynasty, reign of the Yongzheng
 emperor (1723-1735).

H1-0265

仿清雍正青花瑞果纹梅瓶

VASE.

*Ming-style porcelain prunus vase with 'fruits' in underglaze blue.
Qing Dynasty, reign of the Yongzheng emperor (1723-1735).*

M1-0162



ROYAL KECLOUD

RM514 Office Tower, #668 Gaoxin Boulevard, China 430075

Website: www.royalkecloud.com

Email: info@royalkecloud.com