



The Qing Dynasty

(1644-1912)





仿清乾隆红底粉彩扒花开光花鸟纹如意翻口瓶

VASE.

Porcelain vase with 'light-opening flowers and birds' in famille rose on ruby ground.
Qing Dynasty, reign of the Qianlong emperor (1736-1795).

H. 38 cm

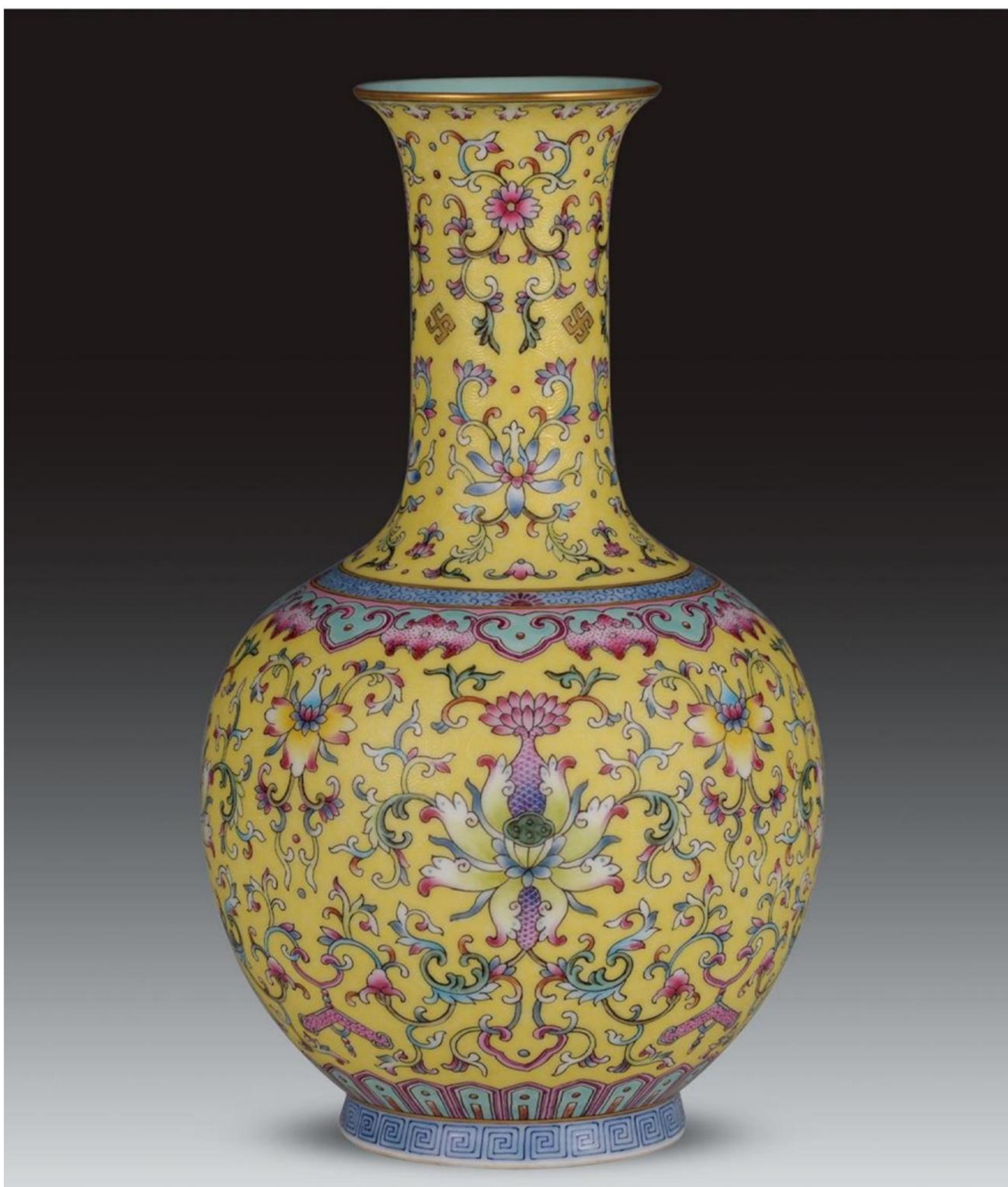
O5-0194



仿清乾隆黄地粉彩通景花
鹤纹双耳瓶

VASE.
*Double-ear porcelain vase with
'florals and cranes' in famille rose on
yellow ground.
Qing Dynasty, reign of the Qianlong
emperor (1736-1795).*

O2-0195



仿清乾隆黄地粉彩扒花
缠枝莲纹赏瓶

VASE.
*Porcelain vase with 'twined lotus'
in famille rose on yellow ground.
Qing Dynasty, reign of the Qianlong
emperor (1736-1795).*

O2-0029



仿清乾隆青花缠枝八宝双耳玉壶春瓶

VASE.

*Double-ear porcelain vase with 'bajixiang' in underglaze blue.
Qing Dynasty, reign of the Qianlong emperor (1736-1795).*

H. 35 cm

C1-0020

仿清乾隆青花跃龙捧寿六方尊

VASE.

Hexagonal porcelain vase with dragon and 'shou' in underglaze blue.
Qing Dynasty, reign of the Qianlong emperor (1736-1795).

H. 47 cm

Z1-0196



仿清乾隆青花鹿鹤图灯笼瓶

VASE.

Blue and white 'deers and cranes' porcelain vase.

Qing Dynasty, reign of the Qianlong emperor (1736-1795).

01-0197





仿清乾隆珐琅彩扒花山水人家
双耳瓶

VASE.
*Two-handled porcelain vase with
'landscape' in enamels on blue ground.
Qing Dynasty, reign of the Qianlong
emperor (1736-1795).*

O4-0198



仿清乾隆松石绿地粉彩花卉
万寿如意耳瓶

VASE.
*Two-handled porcelain vase with
'twined lotus and bats' in famille rose
on turquoise ground.
Qing Dynasty, reign of the Qianlong
emperor (1736-1795).*

O2-0199



仿清乾隆祭蓝描金缠枝花蝠纹双耳绶带瓶

VASE.

*Two-handled porcelain vase with gilt-decorated 'twined lotus and bats' on cobalt blue ground.
Qing Dynasty, reign of the Qianlong emperor (1736-1795).*

H. 34.5 cm

O5-0200



仿清乾隆祭蓝描金开光粉彩花鸟纹方瓶

VASE.
Porcelain vase with 'light-opening floral and bird' in famille rose and gilt-decorated pattern on cobalt blue ground.
Qing Dynasty, reign of the Qianlong emperor (1736-1795).
H. 33.9 cm

O5-0201



仿清乾隆斗彩缠枝莲兽面耳瓶

VASE.
Doucai 'twined lotus' baluster porcelain vase with figural lugs.
Qing Dynasty, reign of the Qianlong emperor (1736-1795).

O3-0203



仿清乾隆霁青釉描金海晏河清尊

ZUN.

*Indigo glazed porcelain zun with swallows and gold-painted design.
Qing Dynasty, reign of the Qianlong emperor (1736-1795).*

Z5-0202



仿清乾隆斗彩缠枝西番莲纹
撇口瓶

VASE.
*Doucai porcelain bottle vase decorated
with phoenix amongst lotus.
Qing Dynasty, reign of the Qianlong
emperor (1736-1795).*
H. 40 cm

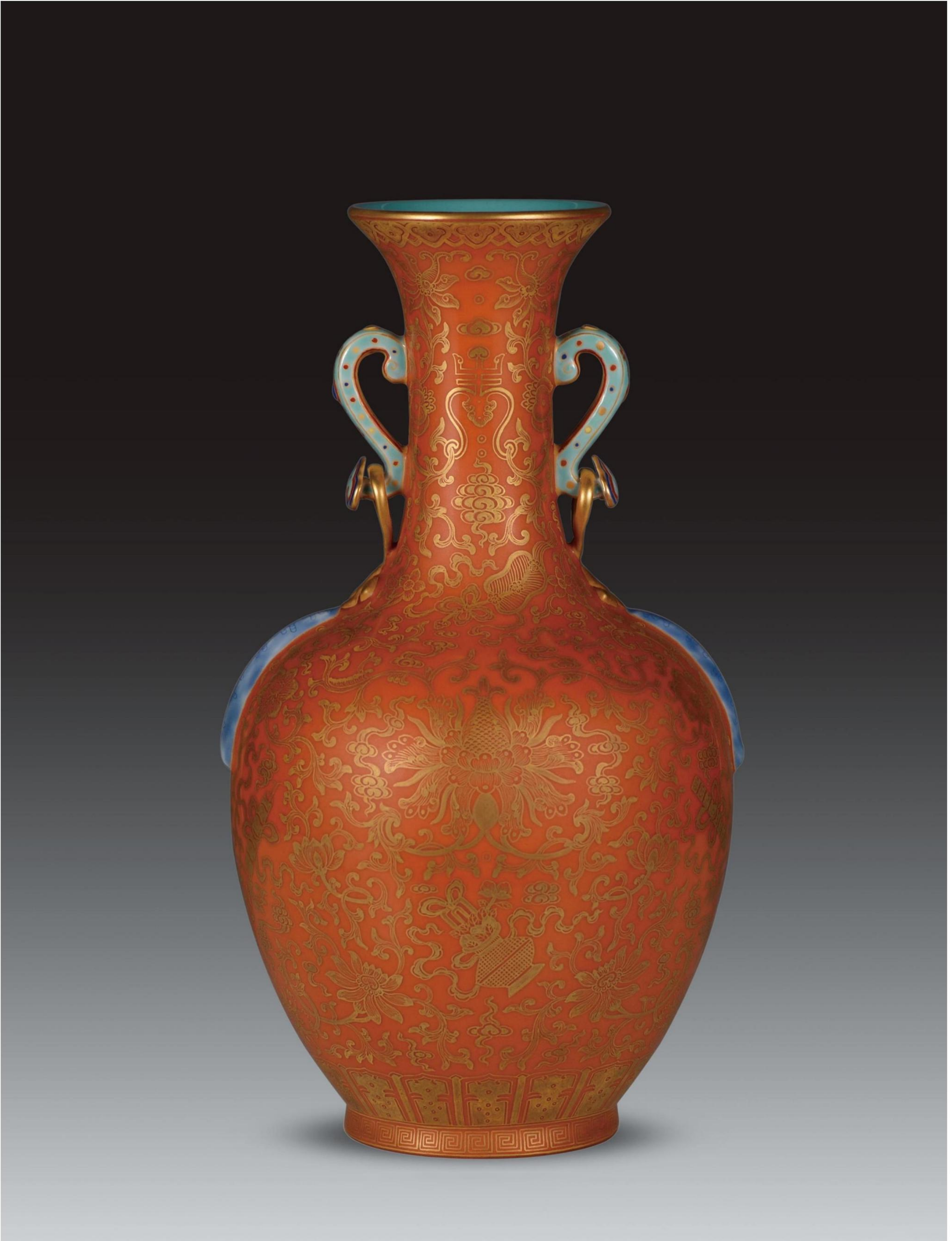
P3-0204



仿清乾隆祭蓝描金勾莲纹瓶

VASE.
*Porcelain vase with gilt-decorated
'lotus' on cobalt blue ground.
Qing Dynasty, reign of the Qianlong
emperor (1736-1795).*
H. 25.2 cm

O5-0205



仿清乾隆矾红描金八宝缠枝纹如意双耳瓶

VASE.

*Twin-handled porcelain vase with gilt-decorated 'bajixiang' on coral-red ground.
Qing Dynasty, reign of the Qianlong emperor (1736-1795).*

O5-0206



仿清乾隆珐琅彩缠枝
莲纹双连瓶

VASE.
*Porcelain vase with 'twined lotus'
in enamels on ruby-ground and
blue-ground.
Qing Dynasty, reign of the Qianlong
emperor (1736-1795).*

O5-0207



仿清乾隆黄地轧道洋彩折枝
花卉纹玉壶春瓶

VASE.
*Yangcai porcelain pear-shaped vase
with florals on yellow ground.
Qing Dynasty, reign of the Qianlong
emperor (1736-1795).
H. 30 cm*

C2-0208



仿清乾隆珐琅彩粉地扒花开光玉堂富贵双耳扁瓶

MOONFLASK.

*Porcelain moonflask with 'light-opening florals' in enamels on pink ground.
Qing Dynasty, reign of the Qianlong emperor (1736-1795).*

H. 16.3 cm

B2-0209



仿清乾隆珐琅彩福寿万代图双耳瓶

VASE.
Double-ear porcelain vase with 'longevity and prosperity' pattern in enamels.
 Qing Dynasty, reign of the Qianlong emperor (1736-1795).
 H. 17 cm

O4-0210



仿清乾隆珐琅彩古月轩题诗花石锦鸡图双耳瓶

VASE.
'Gu Yue Xuan' Double-ear porcelain vase painted in enamels.
 Qing Dynasty, reign of the Qianlong emperor (1736-1795).
 H. 16.7 cm

O4-0211



仿清乾隆珐琅彩花卉雉鸡诗图胆瓶

VASE.
 Porcelain vase with 'flowers and pheasant'
 in enamels.
 Qing Dynasty, reign of the Qianlong
 emperor (1736-1795).
 H. 21 cm

D4-0043



仿清乾隆珐琅彩开光四季花卉图槌瓶

VASE.
 Rouleau vase with 'light-opening florals'
 in enamels.
 Qing Dynasty, reign of the Qianlong
 emperor (1736-1795).
 H. 19 cm

O4-0081



仿清乾隆珐琅彩花卉图瓶

VASE.
Porcelain vase with florals in enamels.
Qing Dynasty, reign of the Qianlong
emperor (1736-1795).
H. 20.4 cm

O4-0212



仿清乾隆珐琅彩竹石图蒜头瓶

VASE.
Garlic-mouth vase painted with bamboo
and rocks in enamels.
Qing Dynasty, reign of the Qianlong
emperor (1736-1795).
H. 16.4 cm

ST4-0068



仿清乾隆珐琅彩人物纹瓶

VASE.
 Porcelain vase with 'figures' in enamels.
 Qing Dynasty, reign of the Qianlong emperor (1736-1795).
 H. 19 cm

O4-0213



仿清乾隆珐琅彩花卉纹橄榄瓶

VASE.
 Porcelain vase with 'three friends of winter' in enamels.
 Qing Dynasty, reign of the Qianlong emperor (1736-1795).
 H. 16.9 cm

G4-0048



仿清乾隆珐琅彩兰锦地摘枝花纹灯笼瓶

VASE.
Porcelain vase with floral in enamels on blue ground.
Qing Dynasty, reign of the Qianlong emperor (1736-1795).
H. 24.6 cm

O4-0214



仿清乾隆珐琅彩月季花扁肚瓶

VASE.
Porcelain vase with chinese rose in enamels.
Qing Dynasty, reign of the Qianlong emperor (1736-1795).
H. 15 cm

D4-0216



仿清乾隆扎道开光花卉纹胆瓶

VASE.

*Porcelain vase with 'light-opening floral' in enamels on blue ground.
Qing Dynasty, reign of the Qianlong emperor (1736-1795).*

H. 23.5 cm

D4-0215



仿清乾隆官粉地洋彩鹤鹿同春如意瓶

VASE.
Garlic-mouth porcelain vase with
'deer and crane' in yangcai on pink
ground.
Qing Dynasty, reign of the Qianlong
emperor (1736-1795).

ST2-0217



清乾隆粉彩牡丹纹玉壶春瓶

VASE.
Pear-shaped porcelain vase with peony
in overglaze famille rose.
Qing Dynasty, reign of the Qianlong
emperor (1736-1795).
H. 35.6 cm

C2-0218



仿清乾隆粉彩描金青釉镂空长颈瓶

VASE.

Famille-rose gilt-decorated porcelain vase with turquoise glaze reticulated pattern.
Qing Dynasty, reign of the Qianlong emperor (1736-1795).

H. 33.2 cm

O2-0219



仿清乾隆斗彩缠枝莲纹
贯耳瓜棱瓶

VASE.
Doucai porcelain 'twined lotus' guan-er vase.
Qing Dynasty, reign of the Qianlong emperor (1736-1795).
H. 38 cm

E3-0220



仿清乾隆斗彩勾莲纹双贯耳瓶

VASE.
Doucai porcelain 'lotus' guan-er vase.
Qing Dynasty, reign of the Qianlong emperor (1736-1795).
H. 26 cm

E3-0221



仿清乾隆斗彩云蝠纹胆瓶

VASE.

Doucai porcelain 'bats and clouds' gallbladder-shaped vase.
Qing Dynasty, reign of the Qianlong emperor (1736-1795).

H. 28.2 cm

D3-0222



仿清乾隆天青釉描金口沿
子母瓶

VASE.
*Turquoise-glazed gilt-decorated
conjoined vase.*
Qing Dynasty, reign of the Qianlong
emperor (1736-1795).
H. 28.5 cm

05-0223



仿清乾隆斗彩云蝠纹盖罐

JAR.
*Doucai porcelain 'bats and clouds' jar
and cover.*
Qing Dynasty, reign of the Qianlong
emperor (1736-1795).
H. 24 cm

J3-0224



仿清乾隆粉彩花蝶纹如意尊

VASE.

Double-gourd vase with 'flower and butterfly' in famille rose.
Qing Dynasty, reign of the Qianlong emperor (1736-1795).

H. 27.5 cm

HL2-0225



仿清乾隆斗彩绿龙戏珠纹盖罐

JAR.
Doucai lidded jar with dragon in green glaze.
Qing Dynasty, reign of the Qianlong emperor (1736-1795).
H. 21 cm

J3-0226



仿清乾隆五彩龙凤纹盘

PLATE.
Wucai porcelain plate decorated with dragons and phoenixes.
Qing Dynasty, reign of the Qianlong emperor (1736-1795).
H. 2.8 cm Diam. 19.5 cm

PD6-0227



仿清乾隆青花开光寿山福海纹双耳扁瓶

MOONFLASK.

*Double-gourd moonflask with 'bats and peach' in underglaze blue.
Qing Dynasty, reign of the Qianlong emperor (1736-1795).*

H. 27 cm

B1-0228



仿清乾隆粉彩绿地八吉祥纹花觚

VASE.
Gu-form porcelain vase with 'bajixiang' in famille rose on green ground.
Qing Dynasty, reign of the Qianlong emperor (1736-1795).
H. 23.9 cm

O2-0229



仿清乾隆矾红描金缠枝花纹花觚

VASE.
Gu-form porcelain vase with florals in gilt on coral-red ground.
Qing Dynasty, reign of the Qianlong emperor (1736-1795).
H. 26 cm

O5-0230



仿清乾隆粉彩扒花万寿延年葫芦瓶

VASE.

*Double-gourd porcelain vase with florals in famille rose on yellow ground.
Qing Dynasty, reign of the Qianlong emperor (1736-1795).*

H. 40 cm

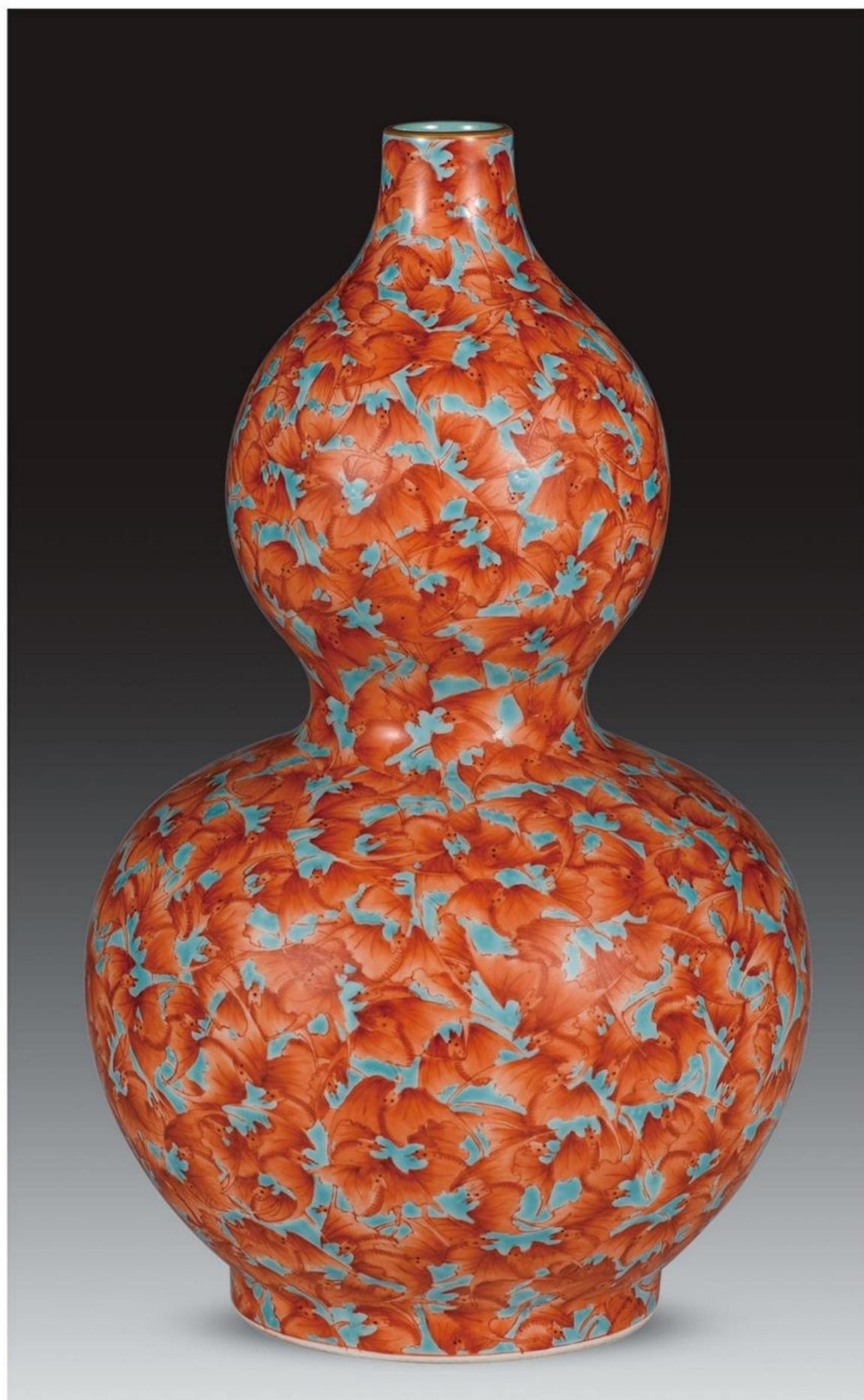
HL2-0231



仿清乾隆黄地粉彩缠枝莲纹葫芦瓶

VASE.
Double-gourd porcelain vase with 'twined lotus' in famille rose on yellow ground. Qing Dynasty, reign of the Qianlong emperor (1736-1795).

HL2-0232



仿清乾隆粉彩绿地福从天降纹葫芦瓶

VASE.
Double-gourd porcelain vase with 'bats' in famille rose on green ground. Qing Dynasty, reign of the Qianlong emperor (1736-1795).

HL2-0233



仿清乾隆粉彩黄底皮球花纹套胆瓶

VASE.

*Double-gourd porcelain vase painted in famille rose on yellow ground.
Qing Dynasty, reign of the Qianlong emperor (1736-1795).*

H. 33 cm

HL2-0234



仿清乾隆珐琅彩
杏林春燕纹碗

BOWL.
Porcelain bowl with 'apricot grove and swallows' in enamels.
Qing Dynasty, reign of the Qianlong emperor (1736-1795).
Diam. 11.3 cm

BL4-0235



仿清乾隆御制珐琅彩
虞美人题诗碗

BOWL.
Porcelain bowl with 'poppy and poem' in enamels.
Qing Dynasty, reign of the Qianlong emperor (1736-1795).
Diam. 11.8 cm

BL4-0237



仿清乾隆红地描金开光
花鸟纹碗

BOWL.
Gilt-decorated porcelain bowl with 'light-opening birds and flowers' on coral-red ground.
Qing Dynasty, reign of the Qianlong emperor (1736-1795).

BL5-0236



仿清乾隆矾红地留白缠枝
花卉纹碗

BOWL.
Porcelain bowl with floral on coral-red ground.
Qing Dynasty, reign of the Qianlong emperor (1736-1795).
Diam. 13 cm

BL5-0238



仿清乾隆粉地粉彩夔龙穿花纹
盖碗

BOWL.
Porcelain lidded bowl with 'dragon among floral' in famille rose on pink ground.
Qing Dynasty, reign of the Qianlong emperor (1736-1795).
H. 8.7 cm Diam. 11.1 cm

BL2-0239



仿清乾隆金地粉彩缠枝牡丹纹
盖碗

BOWL.
Porcelain lidded bowl with 'twined peony' in famille rose on gilt ground.
Qing Dynasty, reign of the Qianlong emperor (1736-1795).
H. 7.6 cm Diam. 11 cm

BL5-0241



仿清乾隆祭蓝描金莲蝠纹盖碗

BOWL.
Porcelain lidded bowl with
gilt-decorated 'lotus and bats'
on cobalt blue glaze.
Qing Dynasty, reign of the Qianlong
emperor (1736-1795).
H. 7.8 cm Diam. 11 cm

BL5-0240



仿清乾隆斗彩团花纹缸

JARDINIÈRE.
Doucai porcelain Jardiniere.
Qing Dynasty, reign of the Qianlong
emperor (1736-1795).
H. 23 cm Diam. 32 cm

PP3-0242



仿清乾隆黄地粉彩缠枝莲纹
海棠式花盆

JARDINIÈRE.
Porcelain jardinière and stand with
'twined lotus' in famille rose on yellow
ground.
Qing Dynasty, reign of the Qianlong
emperor (1736-1795).
Diam. 20 cm

PP2-0243



仿清乾隆松石绿地粉彩描
金折枝四季花卉盖罐

JAR.
Porcelain lidded jar with
gilt-decorated florals in famille rose
on turquoise-ground.
Qing Dynasty, reign of the Qianlong
emperor (1736-1795).

J2-0244



仿清乾隆珐琅瓷描金开窗诗文山水壶

TEAPOT.

Porcelain teapot and cover with gilt-decorated light-opening 'poetry and landscape' in enamels. Qing Dynasty, reign of the Qianlong emperor (1736-1795).

H4-0245

ROYAL KECLOUD

RM514 Office Tower, #668 Gaoxin Boulevard, China 430075

Website: www.royalkecloud.com

Email: info@royalkecloud.com