

6+



Welcome to the Fascinating World of Ants!



Your Ant Mountain™ Set Includes:

- The Ant Mountain™ habitat
- Specially formulated sand for digging
- Sand rod to start the tunnels
- Voucher to order your live ants
- Ant Mountain™ Instruction Guide



WARNING:

CHOKING HAZARD—Small parts.
Not for Children under 3 years

Ant Mountain™ Instruction Guide

Welcome to Ant Mountain™

The World's First Naturally-Inspired Live Ant Habitat

Ant Mountain™ is the most natural live ant habitat ever! The fascinating inside/outside cutaway hill design enables you to watch your colony of ants forage for food, excavate sand, and problem solve. Live ants cannot be shipped to Oregon, Hawaii, Canada, or Mexico.

Getting Started

First, determine when you want to receive your ants. You'll want to be around when your ants arrive in the mail, so don't mail the voucher right before taking a long vacation! *Live ants cannot be shipped to Oregon or Hawaii.*



Locate the live ant voucher in the back of this booklet.

Cut the voucher out, then write your name and address in the spaces provided. Please print as clearly as possible and double check your address. Be sure to enclose the correct payment to cover shipping and handling of your ants. Send the voucher to Life Studies (see voucher for address) - *not to Insect Lore.*

Your ants should arrive in 2 to 3 weeks. If temperatures are extremely hot or cold, allow for extra delivery time. There may be a delay in shipping if weather conditions in your area could endanger the ants (generally below 32°F or above 100°F). If your mailbox is located outdoors, you may wish to have your ants sent to an alternate address where you know they won't be exposed to the elements. The very best time to send for your ants is between the months of April and October.

Setting Up Ant Mountain™

Prepare the Ant Mountain™ habitat while you are waiting for your ants to arrive. Simply follow these step-by-step instructions:

1. Set Ant Mountain™ on a flat surface and open the lid.
2. Locate the bag of sand. Shake the bag so the sand settles to one side.
3. Using a pair of scissors, cut off a small corner of the bag.

4. Slowly and carefully, pour the sand into the FLAT side of Ant Mountain™. This digging chamber is where your ants will do all of their tunnel building. Do not pour sand into the ROUNDED side. You may find funneling the sand into the opening is easier if you use a rolled up piece of paper, as shown in Figure 1. As you fill, stop periodically and gently shift Ant Mountain™ back-and-forth so the sand fills the entire flat digging chamber. Try to fill the chamber to the very top with the sand. We send more than you need and you will have some left over.

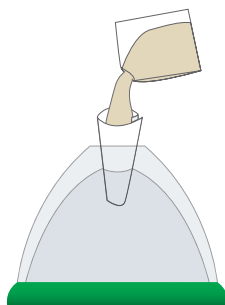


Figure 1

5. Measure 1/4 cup of bottled spring water. Slowly pour about 3/4 of the water onto the sand in the flat digging chamber area and let it soak in. You will notice the water causes the sand to shrink below the crest of the digging chamber. Pour more sand into the flat digging chamber until the chamber is full of sand again, like you did in Step 4. Then pour the remaining water into the sand (Figure 2). This time, don't worry if the sand doesn't quite reach the crest of the chamber.

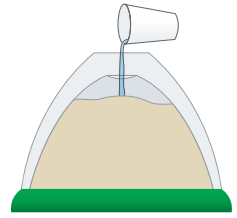


Figure 2

6. Locate the sand rod and stick it straight into the sand chamber (Figure 3). Leave this in place until your ants arrive in the mail.

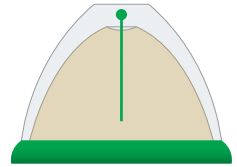


Figure 3

Ant Activity: Be An Ant Detective!

Ants are so fascinating to watch, you will spend hours discovering their habits. Why not keep a journal on what you see? The more time you spend watching them, the more you'll learn. You can buy a journal from your local school supply store or make your very own Ant Journal. Your journal can include factual observations, artistic drawings, and more. Here are a few questions to get you started.

- Why do ants dig tunnels?
- How exactly do they dig?
- Do ants work as individuals or together? Is one ant in charge?
- Do the ants have different jobs?
- Which foods do they prefer?
- How do they communicate?
- Do the ants ever sleep?



When Your Ants Arrive

Your ants will arrive by mail in a small, plastic tube. **WARNING! Don't touch the ants!** They can bite and will inflict a painful sting which may cause pain and swelling. If you are stung, apply ice to the area until the pain subsides. If symptoms persist call your physician.

Open the envelope and remove the ant tube. **DO NOT OPEN IT YET!** Place the ant tube into a refrigerator for about 10 minutes. Do not put the tube into the freezer as you may kill the ants. This cooling period will slow down your ants and make it easier to transfer them to Ant Mountain™.



Open the Ant Mountain™ lid, and, if the sand has dried, place a few drops of bottled spring water into the sand chamber. Do not over-soak. Wait about 5 minutes, then remove the sand rod.

After 10 minutes have passed, remove the ant tube from the refrigerator. Gently tap the ant tube so the ants fall to the bottom of the tube, then quickly open it and release the ants into the Ant Mountain™ chamber. Quickly close the lid.

It takes about 24 hours for your ants to get used to their new home. They may seem a bit lazy at first but don't worry. They will soon find their way around Ant Mountain™ and then will begin to dig their tunnels!



More Ant Activities

1. Teach kids about the fascinating ant life cycle with Insect Lore's Ant Life Cycle Stages figurines. These fun, oversized figurines help children understand the ant life cycle clearly. Find Ant Life Cycle Stages at InsectLore.com.
2. Draw an ant hill - complete with tunnels, chambers and ants inside!
3. Is it snack time? Ants On A Log is a fun snack for kids to make. Spread peanut butter or cream cheese on celery and then place raisins or chocolate chips on top. Yum!
4. Examine ant behavior. What kinds of foods do ants like best? Find an ant colony (make sure it is several feet away from your house!) and place different bits of food - peanut butter, raisins, carrot, apple, etc. - near the opening of the ant home. What happens? Which foods do the ants like best? What do they do with the food? Do the ants work together?



Caring For Your Ants

Your Ant Mountain™ ants are adult Harvester Ants and are fairly low maintenance creatures. They really don't require much care - in fact, you can care too much for them by overfeeding and over-watering them. Your ants will live longer if you follow these simple suggestions:

Feeding

Harvester Ants will eat almost anything, but their favorite foods are fresh vegetables and fruits. However, it's important to feed them sparingly. Feed them one small bit (about the size of an uncooked popcorn kernel) of celery, apple, or carrot. Drop one bit of food into the Ant Mountain™, about every third day, to feed 25 ants; two bits if you have 50 ants. **Remember, do not overfeed your ants!**

Watering

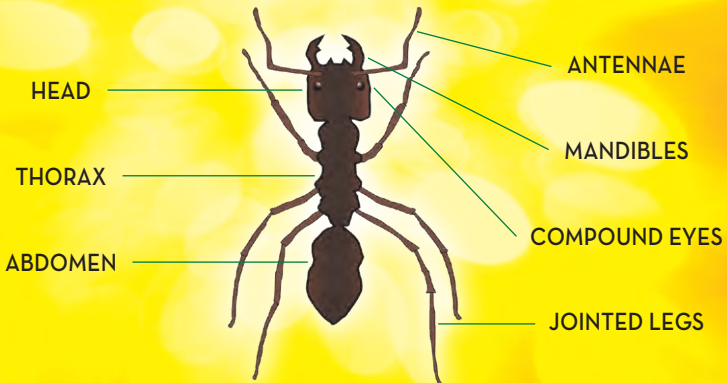
Open the lid of Ant Mountain™ and, using a small piece of damp facial tissue, squeeze 2 drops of water into the sand area every 3 or 4 days. Try not to drop the water into the rounded area as too much water could collect in the base reservoir and the ants could drown. **Remember, do not over-water your ants!**

General Ant Care Pointers

- *Your ants will live longer if kept in a relatively cool place. Temperatures in the 60°F to 70°F range are best.*
- *Keep Ant Mountain™ out of direct sunlight.*
- *Try not to move Ant Mountain™ too often as this may disturb the ants' tunneling. Don't mix other live ants with the ants you receive by mail.*
- *Don't place Ant Mountain™ near any areas that have been sprayed with insecticides.*
- *As your ants tunnel, they will bring sand to the top of Ant Mountain™ near the lid. Most of the sand will fall down into the rounded side. However, some sand may accumulate near the top, allowing the ants to crawl up and escape when you open the lid. If this occurs, open the lid and gently loosen the built-up sand with your sand rod or a pencil.*
- *If you see any condensation (small water droplets) form on the inside of your Ant Mountain™, your ants are in danger. Open the lid and let the habitat dry until the condensation disappears. Be sure to babysit your Ant Mountain™ during drying to avoid any escapees while the lid is open!*

Ant Anatomy

Ants are insects. All insects have three distinct bodyparts (head, thorax, abdomen), six jointed legs, and a hardened outer shell for protection.





Questions and “Ant-swers”

Where do my ants come from?

Your Ant Mountain™ ants come from the rugged desert hills of the American Southwest. Our expert “ant wranglers” have years of experience in the delicate handling of your live ants. These professionals take special care in collecting, packing, and shipping your ants to you.

How long will it take to receive my ants once I mail my voucher?

Please allow at least 2 to 3 weeks for live ant delivery. If temperatures are extremely hot or cold, allow for extra delivery time.

Can I mail the ant voucher at any time of year?

Yes! Expect a slightly longer delivery time in the colder months of the year.



What kind of ants are they?

The ants are commonly known as Western Harvester Ants. Their scientific name is *Pogonomyrmex californicus*. They may bite, so be careful with them!

Do you send a queen ant?

No. Shipping queen ants is prohibited by the U.S. Department of Agriculture.

What happens if the ants get out?

Chances of your ants escaping are very remote. If you keep the Ant Mountain™ lid closed, it is virtually impossible for them to escape. The greatest chance that some ants may escape will be when you are first putting them into your Ant Mountain™. Make sure you read the directions completely prior to placing the ants in your Ant Mountain™ habitat.

How much should I feed them?

Believe it or not, one of the worst things you can do to your ants is to give them too much water and food. Although your ants are active and seem to be working up a big appetite, it is best to feed them according to the directions (see “Caring For Your Ants”). Overfeeding and overwatering will shorten your ants’ life spans.

How long will my ants live?

If properly cared for, your ants will live in Ant Mountain™ for an average of two to four weeks.

Can I use ants from my yard?

We do not recommend putting ants from your yard in Ant Mountain™. Ant Mountain™ has been specially designed for large Harvester Ants (the type you receive when you mail in the certificate). These are larger than most ants found in backyards. Ants you find in your backyard may be smaller than Ant Mountain™ ants and may escape through the air holes. If you try to use your own backyard ants in Ant Mountain™, we cannot guarantee that they won’t escape.



What do I do if my ants arrive dead?

We guarantee your ants will arrive alive. In case yours don’t, please call our ant ranchers directly at 1-877-864-2207 or send an email to life@infowest.com for a free replacement.



Ant Activity: Study A Real Ant Hill!

Go outdoors and see if you can find a real ant hill. Ants are easier to find from April through October. If you locate an ant hill, collect a few ants. Be very careful when collecting ants or any other insects as they may bite or sting. Before you go on your hunt, take along the following items; gloves to protect your hands, a spoon, a magnifying glass, and a small mason jar and lid.

Bring the ants back home and compare them to the ants in your Ant Mountain™. What differences do you see between the two kinds of ants? Make a few notes. After your research is complete, release the wild ants outside using gloves to protect your hands.



Never combine ants you find in the wild with your Ant Mountain™ ants; since they are different species, they will not get along!



EGGS



LARVAE



PUPA



ADULT

Live Ant Voucher

1. Print your information below:

Name _____

School or Business _____

Street Address _____

City _____

State _____

Zip Code _____

2. Check One:

Anthill Supply of Ants

(Approx. 25 Ants - enclose \$4.00)

Super Supply of Ants

(Approx. 50 Ants - enclose \$6.00)

3. Send this voucher with check or money order to:

Life Studies
490 S. 400 W.
Hurricane, UT 84737

PLEASE DO NOT SEND TO INSECT LORE!



PO Box 1535 Shafter, CA 93263

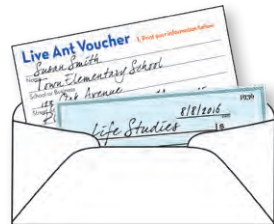
InsectLore.com

Your Ant Mountain™ experience is important to us!
Please share your stories, reviews and images on Facebook,
Pinterest, Twitter, YouTube, and Instagram - or at InsectLore.com!



**Cut out this voucher,
fill out reverse side and send
with check or money order to:**

**Life Studies
490 S. 400 W.
Hurricane, UT 84737**



PLEASE DO NOT SEND TO INSECT LORE!