

EVIO Labs Portland
 14775 SW 74th Ave, Tigard, OR 97224
 503-954-2562 / OLCC 010-10046111391 / www.EVIOLabs.com

Mellow Zone Drops - 750mg

Jane Holdings, LLC
 AG-R1052739IHG



Confident Cannabis ID: 2006ELP0041.2034

Sample ID: P200507-02

Matrix: Cannabinoid Product (liquid)

METRC Batch #: MZ0620

Sampling Method/SOP: Client

Date Sampled: NA

Date Accepted: 06/16/20

Harvest/Process Lot ID:

Batch ID:

Batch Size (g):

Unit for Sale:

Harvest/Production Date:

Cannabinoid Analysis

FOR INFORMATIONAL USE ONLY - NOT FOR REGULATORY PURPOSES

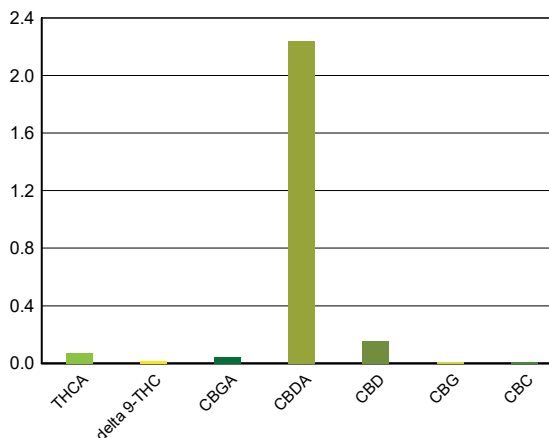
Date/Time Extracted: 06/18/20 12:20

Analysis Method/SOP: SOP.T.40.023

Date/Time Analyzed: 06/19/20 14:00

Cannabinoids	LOQ(%)	mg/g	% weight	Cannabinoid Profile
Total THC ((THCA*0.877)+Δ9THC)		0.80	0.080	
Total CBD ((CBDA*0.877)+CBD)		21.18	2.118	

THCA	0.005	0.73	0.073
delta 9-THC	0.005	0.16	0.016
delta 8-THC	0.005	< LOQ	< LOQ
THCV	0.005	< LOQ	< LOQ
CBGA	0.005	0.42	0.042
CBDA	0.005	22.40	2.24
CBD	0.005	1.53	0.153
CBDV	0.005	< LOQ	< LOQ
CBN	0.005	< LOQ	< LOQ
CBG	0.005	0.09	0.009
CBC	0.005	0.12	0.012
THCV-A	0.005	< LOQ	< LOQ
CBDV-A	0.005	0.15	0.015
Sum of tested Cannabinoids	0.005	25.60	2.56



"Total THC" and "Total CBD" are calculated values and are an Oregon reporting requirement (OAR 333-064-0100). For Cannabinoid analysis, only delta 9-THC, THCA, CBD, CBDA are ORELAP accredited analytes. Cannabinoid values reported for plant matter are dry weight corrected; Oregon Water Activity action level is 0.65Aw and Oregon Moisture Content action level is 15%. Samples above limit will be highlighted RED; FD = Field Duplicate; LOQ = Limit of Quantitation.



Kawai Medeiros
 Laboratory Manager - 6/19/2020

EVIO Labs Portland
 14775 SW 74th Ave, Tigard, OR 97224
 503-954-2562 / OLCC 010-10046111391 / www.EVIOLabs.com

FOR INFORMATIONAL USE ONLY - NOT FOR REGULATORY PURPOSES

Mellow Zone Drops - 750mg

Jane Holdings, LLC

AG-R1052739IHG

Sample ID: P200507-02 METRC Batch #: MZ0620

Matrix: Cannabinoid Product

Date Sampled: NA

Date Accepted: 06/16/20

Batch ID:

Batch Size:

Sampling Method/SOP: Client

Terpene Analysis

Date/Time Extracted: 06/18/20 08:40

Analysis Method/SOP: SOP.T.40.092

Date/Time Analyzed: 06/19/20 10:24

Analyte	LOQ (mg/g)	Mass (mg/g)	Mass (%)	Analyte	LOQ (mg/g)	Mass (mg/g)	Mass (%)
alpha-Pinene	0.020	0.048	0.0048	beta-Pinene	0.020	0.026	0.0026
Camphene	0.020	< LOQ	< LOQ	Sabinene	0.020	< LOQ	< LOQ
Sabinene hydrate	0.020	< LOQ	< LOQ	beta-Myrcene	0.020	0.102	0.0102
p-Mentha-1,5-diene	0.020	< LOQ	< LOQ	(+)-3-Carene	0.020	< LOQ	< LOQ
alpha-Terpinene	0.020	< LOQ	< LOQ	gamma-Terpinene	0.020	< LOQ	< LOQ
Limonene	0.020	0.369	0.0369	Eucalyptol	0.020	0.114	0.0114
Guaiol	0.020	0.080	0.008	Terpinolene	0.020	< LOQ	< LOQ
Linalool	0.020	2.71	0.271	Camphor	0.020	< LOQ	< LOQ
(+)-Camphor	0.020	< LOQ	< LOQ	(-)-Camphor	0.020	< LOQ	< LOQ
Isopulegol	0.020	< LOQ	< LOQ	Isoborneol	0.020	< LOQ	< LOQ
Borneol	0.020	0.066	0.0066	Hexahydrothymol	0.020	< LOQ	< LOQ
Geraniol	0.020	< LOQ	< LOQ	(+)-Pulegone	0.020	< LOQ	< LOQ
Nerol	0.020	< LOQ	< LOQ	cis-Nerolidol	0.020	< LOQ	< LOQ
trans-Nerolidol	0.020	0.024	0.0024	Geranyl acetate	0.020	0.066	0.0066
alpha-Cedrene	0.020	< LOQ	< LOQ	trans-Caryophyllene	0.020	0.192	0.0192
Caryophyllene Oxide	0.020	0.131	0.0131	alpha-Humulene	0.020	0.050	0.005
Valencene	0.020	< LOQ	< LOQ	alpha-Farnesene	0.020	< LOQ	< LOQ
beta-Farnesene	0.020	< LOQ	< LOQ	Cedrol	0.020	< LOQ	< LOQ
alpha-Bisabolol	0.020	0.179	0.0179	Fenchone	0.020	< LOQ	< LOQ
Fenchyl Alcohol	0.020	< LOQ	< LOQ	trans, beta- Ocimene	0.020	0.587	0.0587
beta, cis- Ocimene	0.020	0.133	0.0133	Terpineol	0.020	0.195	0.0195
Total (Sum):						5.07	0.51

Analysis performed on GCMS with confirmation ion identification. Terpene analysis is not ORELAP accredited. Results reported as wet weight, or as is. LOQ = Limit of Quantitation.



Kawai Medeiros
 Laboratory Manager - 6/19/2020

EVIO Labs Portland
14775 SW 74th Ave, Tigard, OR 97224
503-954-2562 / OLCC 010-10046111391 / www.EVIOLabs.com

Quality Control

Batch: P20F063 - SOP.T.30.050PDX Prep for Cannabinoids

Blank(P20F063-BLK1)			Extracted: 06/18/20 12:20		Analyzed: 06/19/20 14:00		
Analyte	Result	LOQ	Recovery Limits	Analyte	Result	LOQ	Recovery Limits
THCA	< LOQ	0.005 (%)	< LOQ	delta 9-THC	< LOQ	0.005 (%)	< LOQ
delta 8-THC	< LOQ	0.005 (%)	< LOQ	THCV-A	< LOQ	0.005 (%)	< LOQ
THCV	< LOQ	0.005 (%)	< LOQ	CBDA	< LOQ	0.005 (%)	< LOQ
CBD	< LOQ	0.005 (%)	< LOQ	CBDV-A	< LOQ	0.005 (%)	< LOQ
CBDV	< LOQ	0.005 (%)	< LOQ	CBG	< LOQ	0.005 (%)	< LOQ
CBGA	< LOQ	0.005 (%)	< LOQ	CBN	< LOQ	0.005 (%)	< LOQ
CBC	< LOQ	0.005 (%)	< LOQ	Sum of tested Cannabinoid:	< LOQ	0.005 (%)	< LOQ

Batch: P20F066 - SOP.T.40.092 PDX Terpenoid Analysis via GC-MS

Blank(P20F066-BLK1)			Extracted: 06/18/20 08:40		Analyzed: 06/19/20 10:24		
Analyte	Result	LOQ	Recovery Limits	Analyte	Result	LOQ	Recovery Limits
alpha-Pinene	< LOQ	0.200 (mg/g)	< LOQ	beta-Pinene	< LOQ	0.200 (mg/g)	< LOQ
Camphene	< LOQ	0.200 (mg/g)	< LOQ	Sabinene	< LOQ	0.200 (mg/g)	< LOQ
Sabinene hydrate	< LOQ	0.200 (mg/g)	< LOQ	beta-Myrcene	< LOQ	0.200 (mg/g)	< LOQ
p-Mentha-1,5-diene	< LOQ	0.200 (mg/g)	< LOQ	(+)-3-Carene	< LOQ	0.200 (mg/g)	< LOQ
alpha-Terpinene	< LOQ	0.200 (mg/g)	< LOQ	gamma-Terpinene	< LOQ	0.200 (mg/g)	< LOQ
Limonene	< LOQ	0.200 (mg/g)	< LOQ	Eucalyptol	< LOQ	0.200 (mg/g)	< LOQ
Guaiol	< LOQ	0.200 (mg/g)	< LOQ	Terpinolene	< LOQ	0.200 (mg/g)	< LOQ
Linalool	< LOQ	0.200 (mg/g)	< LOQ	Camphor	< LOQ	0.200 (mg/g)	< LOQ
(+)-Camphor	< LOQ	0.200 (mg/g)	< LOQ	(-)-Camphor	< LOQ	0.200 (mg/g)	< LOQ
Isopulegol	< LOQ	0.200 (mg/g)	< LOQ	Isoborneol	< LOQ	0.200 (mg/g)	< LOQ
Borneol	< LOQ	0.200 (mg/g)	< LOQ	Hexahydrothymol	< LOQ	0.200 (mg/g)	< LOQ
Geraniol	< LOQ	0.200 (mg/g)	< LOQ	(+)-Pulegone	< LOQ	0.200 (mg/g)	< LOQ
Nerol	< LOQ	0.200 (mg/g)	< LOQ	cis-Nerolidol	< LOQ	0.200 (mg/g)	< LOQ
trans-Nerolidol	< LOQ	0.200 (mg/g)	< LOQ	Geranyl acetate	< LOQ	0.200 (mg/g)	< LOQ
alpha-Cedrene	< LOQ	0.200 (mg/g)	< LOQ	trans-Caryophyllene	< LOQ	0.200 (mg/g)	< LOQ
Caryophyllene Oxide	< LOQ	0.200 (mg/g)	< LOQ	alpha-Humulene	< LOQ	0.200 (mg/g)	< LOQ
Valencene	< LOQ	0.200 (mg/g)	< LOQ	alpha-Farnesene	< LOQ	0.200 (mg/g)	< LOQ
beta-Farnesene	< LOQ	0.200 (mg/g)	< LOQ	Cedrol	< LOQ	0.200 (mg/g)	< LOQ
alpha-Bisabolol	< LOQ	0.200 (mg/g)	< LOQ	Fenchone	< LOQ	0.200 (mg/g)	< LOQ
Fenchyl Alcohol	< LOQ	0.200 (mg/g)	< LOQ	trans, beta- Ocimene	< LOQ	0.200 (mg/g)	< LOQ
beta, cis- Ocimene	< LOQ	0.200 (mg/g)	< LOQ	Terpineol	< LOQ	0.200 (mg/g)	< LOQ



Kawai Medeiros
Laboratory Manager - 6/19/2020