

# IMPeek

PEEK into the future.

IMPeek rods offer surgeons **unique, flexible and dynamic solutions** to complex fractures. With IMPeek rods, medullary canals can be **filled up to 70%** allowing plate-rod constructs up to **4x stronger than traditional plate-rod\***.

PEEK (polyetheretherketone) is a bioinert polymer with **similar properties to healthy bone** when filled with **carbon fiber**.

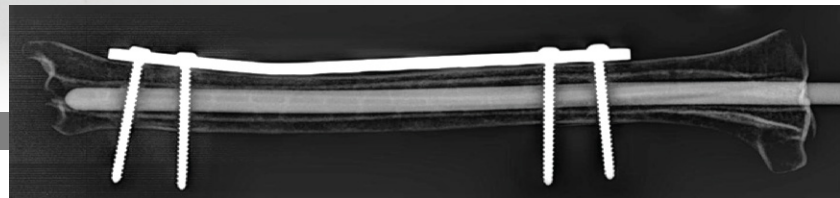
Autoclavable.

Cutttable. Screwable. Drillable.

Bicortical.

Interlocking.

Radiopaque.



## IMPeek Rods Available WORLD WIDE!

(Visit [IMPeek.com](http://IMPeek.com) for purchase & shipping details)

2mm IMPeek Rod - \$62.99 USD

3mm IMPeek Rod - \$64.99 USD

4mm IMPeek Rod - \$65.99 USD

5mm IMPeek Rod - \$73.99 USD

6mm IMPeek Rod - \$77.99 USD



\* Beierer et al (Vet Surgery, 2014)

# CelloVet

BE CERTAIN IT'S CELLOPHANE

YOUR VETERINARY SOURCE OF REAL CELLOPHANE

CelloVet is your supplier of **100% real extruded regenerated cellulose** for use in banding portosystemic shunts.

MALLEABLE

EFFECTIVE

ECONOMIC

THIN

Remove the doubt about your implant's constituents and material properties and choose CelloVet's **FTIR spectroscopy confirmed REAL cellophane** products.

**DESIGNED FOR SURGEONS  
BY SURGEONS**

**CelloVet Products Available WORLD WIDE!**

Visit [cellovet.com](http://cellovet.com) for product catalog as well as purchase & shipping details

**NEW COATED CELLOVET NOW AVAILIABLE**

Original UNCOATED products also available for purchase

Cellophane Strips - from \$25 to \$250 USD

Cellophane Sheets - from \$50 to \$500 USD

Reinforcement Polymer - \$15 USD