

## 9782 Foam insert hammer set 1, 6 pieces

Foam inserts for roller cabinet



<b>EAN:</b>	4013288225191	<b>Size:</b>	405x185x55 mm
<b>Part number:</b>	05150182001	<b>Weight:</b>	1960 g
<b>Article number:</b>	9782	<b>Country of origin:</b>	DE (05)
		<b>Customs tariff number:</b>	82055980

- Durable foam insert, each tool has its own place; two-coloured, missing tools will quickly be noticed
- High-quality, durable foam insert without chemical vapours
- Optimum fit for the best possible removal of the tools from the foam insert
- Water- and oil-repellent, low maintenance and easy to clean
- Protection of the tool from dirt and impact
- Width x height x depth: without tools 172 x 30 x 392 mm, with tools 172 x 35 x 392 mm

Durable foam insert; two-coloured for quick identification of missing parts; suitable for the Tool Rebel roller cabinet; equipped with 1 PICARD® riveting hammer, 4 RENNSTEIG parallel pin punches and 1 RENNSTEIG flat cold chisel.

### Web link

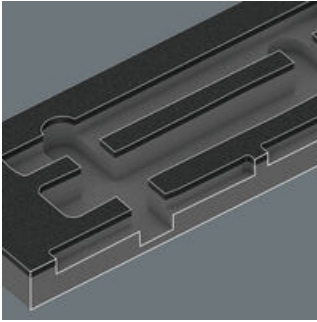
[https://products.wera.de/en/roller\\_cabinet\\_and\\_foam\\_inserts\\_foam\\_inserts\\_for\\_roller\\_cabinet\\_9782.html](https://products.wera.de/en/roller_cabinet_and_foam_inserts_foam_inserts_for_roller_cabinet_9782.html)

Wera - 9782  
05150182001 - 4013288225191

Wera Werkzeuge GmbH  
Korzter Straße 21-25  
D-42349 Wuppertal  
Tel: +49 (0)2 02 / 40 45-0  
E-Mail: [info@wera.de](mailto:info@wera.de)

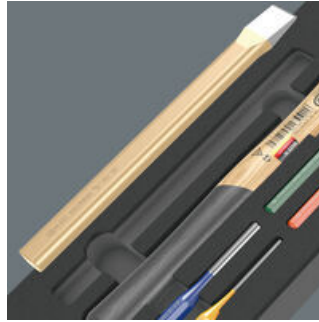
## Foam inserts for roller cabinet

### Safe storage and quick overview



The tools sit securely in the foam thanks to precise contour cutouts, but are easy to remove. The carefully designed arrangement of the tools ensures space-saving storage and quick access to each tool.

### Two-coloured foam insert



After removing the tool the light grey second foam becomes visible and therefore missing tools are quickly identified.

### Web link

[https://products.wera.de/en/roller\\_cabinet\\_and\\_foam\\_inserts\\_foam\\_inserts\\_for\\_roller\\_cabinet\\_9782.html](https://products.wera.de/en/roller_cabinet_and_foam_inserts_foam_inserts_for_roller_cabinet_9782.html)

Wera - 9782

05150182001 - 4013288225191

## 9782 Foam insert hammer set 1, 6 pieces

Foam inserts for roller cabinet

Set contents:

PICARD® riveting hammer 500 g, 0000101-500, 500 gr

1x 500 gr



RENNSTEIG Parallel pin punches Exclusive, 452 003 6 RC x 3 x 150 mm

1x 452 003 6 RC x 3 x 150 mm

1x 452 004 6 RC x 4 x 150 mm

1x 452 006 6 RC x 6 x 150 mm

1x 452 008 6 RC x 8 x 150 mm



RENNSTEIG Flat cold chisel 310 250 1, 25 x 13 x 23 mm

1x 25 x 13 x 23 mm

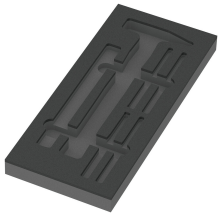


9882 Foam insert hammer set 1, empty, 172 x 30 x 392 mm

05137382001<sup>1)</sup>

1x 172 x 30 x 392 mm

1) Attention: The foam insert does not fit in the previous model 05501051001 of the roller cabinet.



Web link

[https://products.wera.de/en/roller\\_cabinet\\_and\\_foam\\_inserts\\_foam\\_inserts\\_for\\_roller\\_cabinet\\_9782.html](https://products.wera.de/en/roller_cabinet_and_foam_inserts_foam_inserts_for_roller_cabinet_9782.html)

Wera - 9782

05150182001 - 4013288225191

Wera Werkzeuge GmbH

Korzter Straße 21-25

D-42349 Wuppertal

Tel: +49 (0)2 02 / 40 45-0

E-Mail: [info@wera.de](mailto:info@wera.de)