

851/4 A bits, PH 2 x 50 x 6 mm

Bits for Phillips Screws



| | | | |
|------------------------|---------------|-------------------------------|-----------|
| EAN: | 4013288100016 | Size: | 50x7x6 mm |
| Part number: | 05134931001 | Weight: | 10 g |
| Article number: | 851/4 A PH | Country of origin: | CZ |
| | | Customs tariff number: | 82079030 |

- For Phillips screws
- Profiled version
- Particularly hard for semi-hard materials
- 1/4" hexagon drive (Wera connecting series 4)

High quality Wera bit for Phillips screws. It has a sharp-edged profile that ensures a dependable transfer of power between the bit and screw by breaking off the paint e.g. when screw profiles are covered in it. Extra-hard design: 1/4" hexagon, suitable for holders as per DIN ISO 1173-F 6.3.

Web link

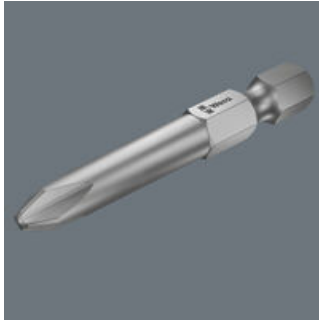
https://products.wera.de/en/bits_holders_adaptors_and_sets_the_range_of_bits_bits_for_phillips_screws_851_4_a_ph.html

Wera - 851/4 A PH
05134931001 - 4013288100016

Wera Werkzeuge GmbH
Korzter Straße 21-25
D-42349 Wuppertal
Tel: +49 (0)2 02 / 40 45-0
E-Mail: info@wera.de





Bits for Phillips Screws

A-Bits



A stands for aviation. A bits are particularly hard bits with a sharp-edged profile which e.g. penetrates screw profiles full of paint (such as on fuselage panels) ensuring a dependable transfer of force between the bit and the screw.

Further versions in this product family:

| |  |  mm |  inch |  mm |
|---------------------------|--|--|--|--|
| 05134929001 | PH 0 | 50 | 2" | 3 |
| 05134906001 | PH 0 | 70 | 2 3/4" | 3 |
| 05134907001 | PH 0 | 89 | 3 1/2" | 3 |
| 05134930001 | PH 1 | 50 | 2" | 4.5 |
| 05134370001 | PH 1 | 70 | 2 3/4" | 4.5 |
| 05134372001 | PH 1 | 89 | 3 1/2" | 4.5 |
| 05134931001 | PH 2 | 50 | 2" | 6 |
| 05134371001 | PH 2 | 70 | 2 3/4" | 6 |
| 05134373001 | PH 2 | 89 | 3 1/2" | 6 |
| 05134910001 ¹⁾ | PH 2 | 152 | 6" | 6 |
| 05134911001 ²⁾ | PH 2 | 152 | 6" | 6 |
| 05134932001 | PH 3 | 50 | 2" | - |
| 05134913001 | PH 3 | 70 | 2 3/4" | 8 |
| 05134914001 | PH 3 | 89 | 3 1/2" | 8 |
| 05134915001 | PH 3 | 152 | 6" | 8 |
| 05160983001 | PH 4 | 50 | 2" | 10 |

1) Length of drive 100 mm

2) Length of drive 20 mm

Web link

https://products.wera.de/en/bits_holders_adaptors_and_sets_the_range_of_bits_bits_for_phillips_screws_851_4_a_ph.html

Wera - 851/4 A PH
 05134931001 - 4013288100016

Wera Werkzeuge GmbH
 Korzter Straße 21-25
 D-42349 Wuppertal
 Tel: +49 (0)2 02 / 40 45-0
 E-Mail: info@wera.de