

## 851/4 A bits, PH 2 x 152 x 6 mm

### Bits for Phillips Screws



<b>EAN:</b>	4013288105219	<b>Size:</b>	152x7x6 mm
<b>Part number:</b>	05134911001	<b>Weight:</b>	33 g
<b>Article number:</b>	851/4 A PH	<b>Country of origin:</b>	CZ
		<b>Customs tariff number:</b>	82079030

- For Phillips screws
- Profiled version
- Particularly hard for semi-hard materials
- 1/4" hexagon drive (Wera connecting series 4)

High quality Wera bit for Phillips screws. It has a sharp-edged profile that ensures a dependable transfer of power between the bit and screw by breaking off the paint e.g. when screw profiles are covered in it. Extra-hard design: 1/4" hexagon, suitable for holders as per DIN ISO 1173-F 6.3.

#### Web link

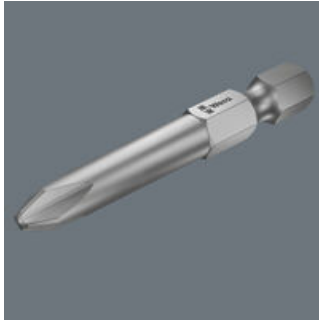
[https://products.wera.de/en/bits\\_holders\\_adaptors\\_and\\_sets\\_the\\_range\\_of\\_bits\\_bits\\_for\\_phillips\\_screws\\_851\\_4\\_a\\_ph.html](https://products.wera.de/en/bits_holders_adaptors_and_sets_the_range_of_bits_bits_for_phillips_screws_851_4_a_ph.html)

Wera - 851/4 A PH  
05134911001 - 4013288105219

Wera Werkzeuge GmbH  
Korzter Straße 21-25  
D-42349 Wuppertal  
Tel: +49 (0)2 02 / 40 45-0  
E-Mail: [info@wera.de](mailto:info@wera.de)





## Bits for Phillips Screws

## A-Bits



A stands for aviation. A bits are particularly hard bits with a sharp-edged profile which e.g. penetrates screw profiles full of paint (such as on fuselage panels) ensuring a dependable transfer of force between the bit and the screw.

## Further versions in this product family:

		 mm	 inch	 mm
05134929001	PH 0	50	2"	3
05134906001	PH 0	70	2 3/4"	3
05134907001	PH 0	89	3 1/2"	3
05134930001	PH 1	50	2"	4.5
05134370001	PH 1	70	2 3/4"	4.5
05134372001	PH 1	89	3 1/2"	4.5
05134931001	PH 2	50	2"	6
05134371001	PH 2	70	2 3/4"	6
05134373001	PH 2	89	3 1/2"	6
05134910001 <sup>1)</sup>	PH 2	152	6"	6
<b>05134911001<sup>2)</sup></b>	<b>PH 2</b>	<b>152</b>	<b>6"</b>	<b>6</b>
05134932001	PH 3	50	2"	-
05134913001	PH 3	70	2 3/4"	8
05134914001	PH 3	89	3 1/2"	8
05134915001	PH 3	152	6"	8
05160983001	PH 4	50	2"	10

1) Length of drive 100 mm

2) Length of drive 20 mm

## Web link

[https://products.wera.de/en/bits\\_holders\\_adaptors\\_and\\_sets\\_the\\_range\\_of\\_bits\\_bits\\_for\\_phillips\\_screws\\_851\\_4\\_a\\_ph.html](https://products.wera.de/en/bits_holders_adaptors_and_sets_the_range_of_bits_bits_for_phillips_screws_851_4_a_ph.html)

Wera - 851/4 A PH  
05134911001 - 4013288105219

Wera Werkzeuge GmbH  
Korzter Straße 21-25  
D-42349 Wuppertal  
Tel: +49 (0)2 02 / 40 45-0  
E-Mail: [info@wera.de](mailto:info@wera.de)