

7782 E Ratchet insert, reversible, 14x18 mm, 14x18 x 3/4" x 90 mm

Insert tools with ratchet functionality



EAN:	4013288196569	Size:	190x120x64 mm
Part number:	05078708001	Weight:	796 g
Article number:	7782 E	Country of origin:	TW
		Customs tariff number:	82079099

- Square insert tool 14x18 mm
- For 3/4" square socket wrench inserts and 3/4" connecting parts with square drive
- Fine tothing with 72 teeth
- Easy switching by knob
- Socket lock by push button

Ratchet insert, reversible, for 3/4" square socket wrench inserts and 3/4" connecting parts with square drive; for torque wrenches of the Click-Torque X series with 14x18 mm holder.

Web link

https://products.wera.de/en/torque_tools_series_click-torque_wrenches_series_insert_tools_insert_tools_with_ratchet_functionality_7782_e.html

Wera - 7782 E
05078708001 - 4013288196569

Wera Werkzeuge GmbH
Korzter Straße 21-25
D-42349 Wuppertal
Tel: +49 (0)2 02 / 40 45-0
E-Mail: info@wera.de

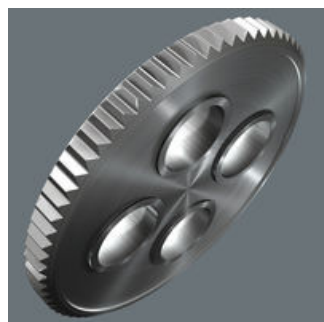
Insert tools with ratchet functionality

Drive 14x18 mm



For torque wrenches of the Click-Torque X series with 14x18 mm holder.

Small return angle



Fine-pitched with 72 teeth for a return angle of only 5°

3/4" external square



For 3/4" square socket wrench inserts and 3/4" connecting parts with square drive.

Reverse the drive



Easy switching by knob.

Secure socket locking



Safe socket lock via push button

Chrome vanadium steel



The chrome-vanadium steel version makes the plug-in tools suitable for heavy loads.

Further versions in this product family:

	mm	inch	mm	mm	mm	mm	mm
05078708001	14x18	3/4"	30.0	90.0	65.0	65.0	36.0

Web link

https://products.wera.de/en/torque_tools_series_click-torque_wrenches_series_insert_tools_insert_tools_with_ratchet_functionality_7782_e.html

Wera - 7782 E
05078708001 - 4013288196569

Wera Werkzeuge GmbH
Korzter Straße 21-25
D-42349 Wuppertal
Tel: +49 (0)2 02 / 40 45-0
E-Mail: info@wera.de