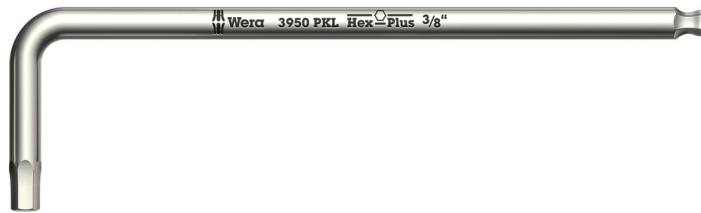


3950 PKL L-key, Imperial, stainless, 5/16" x 195 mm

L-Keys for Hexagon Socket Screws



EAN:	4013288117229	Size:	195x37x10 mm
Part number:	05022717001	Weight:	135 g
Article number:	3950 PKL inch	Country of origin:	CZ
		Customs tariff number:	82041100

- Solution to the extraneous rust problem: fasten stainless screws with stainless tools
- For socket head screws
- Hex-Plus allows socket head screws to live longer
- Hexagonal ballpoint on the long arm
- Imperial

High quality L-keys out of stainless steel for imperial hexagonal socket screws by Wera. Stainless steel prevents the formation of extraneous rust. The Hex-Plus profile offers a larger contact surface within the screw head. This reduces the notching effects to a minimum and almost completely eliminates the risk of destroying the screw recess. Hexagonal ballpoint end on the long arm: the ballpoint drive profile means that it is possible to swivel the tool axis away from the screwdriving axis, thus enabling "round the corner" screwdriving.

Web link

https://products.wera.de/en/l-keys_l-keys_for_hexagon_socket_screws_3950_pkl_inch.html

Wera - 3950 PKL inch
05022717001 - 4013288117229

Wera Werkzeuge GmbH
Korzter Straße 21-25
D-42349 Wuppertal
Tel: +49 (0)2 02 / 40 45-0
E-Mail: info@wera.de

L-Keys for Hexagon Socket Screws

Stainless L-keys



Stainless L-keys are hardened to the same strength as conventional (carbon) steel tools, and prevent extraenous rust forming.

Vacuum ice-hardened



The stainless steel tools from Wera are vacuum ice-hardened and have the hardness and strength needed for screw connections. There are no limitations to the industrial applications they are suitable for.

Hex-Plus



Hexagon screws can endure a problem because the contact surfaces delivering the power from the conventional tool, is transferred to the screw via very small surface areas. The consequence: the screw can become damaged (rounding out). Hex-Plus tools have a greater contact surface that prevents this from happening! At the same time, as much as 20 % more torque can be applied. Good to know: Hex-Plus tools fit into every standard hexagon socket screw!

Ball tip



The spherical drive profile means that it is possible to swivel the axis of the tool to that of the screw, and therefore enable angled, "around-the-corner" screwdriving jobs.

Size identification



The size of each L-keys has been engraved by a laser. In addition Take it easy L-keys have a colour coding according to sizes - for simple and rapid accessing of the required tool. Making it easy to find the right tool.

Web link






https://products.wera.de/en/l-keys_l-keys_for_hexagon_socket_screws_3950_pkl_inch.html

Wera - 3950 PKL inch
05022717001 - 4013288117229

Wera Werkzeuge GmbH
Korzter Straße 21-25
D-42349 Wuppertal
Tel: +49 (0)2 02 / 40 45-0
E-Mail: info@wera.de

L-Keys for Hexagon Socket Screws

Further versions in this product family:

	 inch	 mm	 mm	 inch	 inch
05022710001	3/32"	112	19	4 7/16"	3/4"
05022711001	7/64"	119	20	4 3/4"	25/32"
05022712001	1/8"	123	21	4 7/8"	27/32"
05022713001	9/64"	130	22	5 3/16"	29/32"
05022714001	5/32"	137	24	5 3/8"	1"
05022715001	3/16"	154	27	6 1/16"	1 1/16"
05022716001	1/4"	185	34	7 1/4"	1 5/16"
05022717001	5/16"	195	37	7 11/16"	1 7/16"
05022718001	3/8"	224	42	9"	1 11/16"

Web link

https://products.wera.de/en/l-keys_l-keys_for_hexagon_socket_screws_3950_pkl_inch.html

Wera - 3950 PKL inch
 05022717001 - 4013288117229

Wera Werkzeuge GmbH
 Korzter Straße 21-25
 D-42349 Wuppertal
 Tel: +49 (0)2 02 / 40 45-0
 E-Mail: info@wera.de