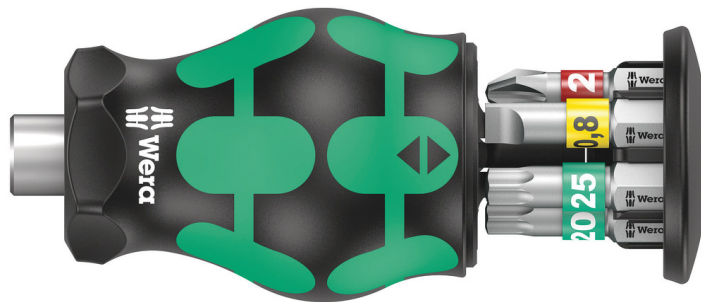


# Kraftform Kompakt Stubby magazine 1, 6 pieces

Kraftform Kompakt Stubby - With Kraftform bit-holding Stubby screwdriver handle.



<b>EAN:</b>	4013288217769	<b>Size:</b>	115x60x40 mm
<b>Part number:</b>	05008873001	<b>Weight:</b>	108 g
<b>Article number:</b>	Kraftform Kompakt Stubby Magazin 1	<b>Country of origin:</b>	CZ
		<b>Customs tariff number:</b>	82079030

- Short, compact Stubby shape for working in tight installation spaces, with 6 bits in the integrated magazine
- Ergonomic 2-component Kraftform handle for precise work
- 1/4" bit mounting with strong permanent magnet
- Captive and swiveling bit magazine for easy removal and safe storage of bits
- Take it easy tool finder: colour coding according to profile and size

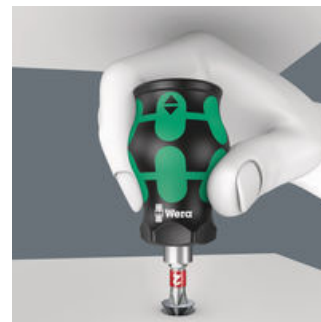
Particularly small bitholding screwdriver with short bit mounting for hard to reach areas. Includes 6 bits, which are located in a magazine in the handle. With only 65mm total length, the Kraftform Kompakt Stubby is a real mini screwdriving workshop. The strong permanent magnet in the bit mounting ensures secure holding of the bit. The 2-component handle with the practical combination of hard and soft zones allows for a firm grip and precise working. Take it easy tool finder: With size stamping and colour coding by output to find the required bit easily.

## Handle with integrated bit magazine



The handle can be opened and thus gives access to the six bits contained in the magazine.

## Compact shape



With its compact handle shape and the short blade, the Kraftform Stubbies are particularly suitable for working in confined screwdriving situations.

## Swiveling bit magazine



The swiveling bit magazine allows for the bits to be removed easily in almost any situation and cannot be lost. The bits are safely stored.

## Web link

[https://products.wera.de/en/kraftform\\_kompakt\\_kraftform\\_kompakt\\_stubby\\_with\\_kraftform\\_bit-holding\\_stubby\\_screwdriver\\_handle\\_kraftform\\_kompakt\\_stubby\\_magazin\\_1.htm](https://products.wera.de/en/kraftform_kompakt_kraftform_kompakt_stubby_with_kraftform_bit-holding_stubby_screwdriver_handle_kraftform_kompakt_stubby_magazin_1.htm)

Wera - Kraftform Kompakt Stubby Magazin 1  
05008873001 - 4013288217769

Wera Werkzeuge GmbH  
Korzter Straße 21-25  
D-42349 Wuppertal  
Tel: +49 (0)2 02 / 40 45-0  
E-Mail: info@wera.de

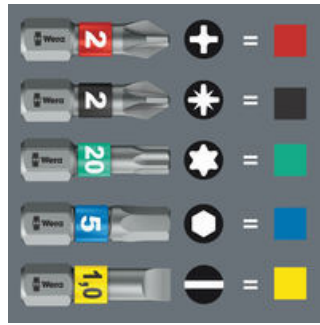
Kraftform Kompakt Stubby - With Kraftform bit-holding Stubby screwdriver handle.

BiTorsion Bits



With BiTorsion zone to cushion peak loads.

"Take it easy" tool finder



"Take it easy" tool finder with colour coding according to profiles and size stamp - for simple and rapid accessing of the required tool.

Bit holder with magnet



The magnet ensures that the bit is securely seated in the holder.

Web link

[https://products.wera.de/en/kraftform\\_kompakt\\_kraftform\\_kompakt\\_stubby\\_with\\_kraftform\\_bit-holding\\_stubby\\_screwdriver\\_handle\\_kraftform\\_kompakt\\_stubby\\_magazin\\_1.htm](https://products.wera.de/en/kraftform_kompakt_kraftform_kompakt_stubby_with_kraftform_bit-holding_stubby_screwdriver_handle_kraftform_kompakt_stubby_magazin_1.htm)

Wera - Kraftform Kompakt Stubby Magazin 1  
05008873001 - 4013288217769

Wera Werkzeuge GmbH  
Korzter Straße 21-25  
D-42349 Wuppertal  
Tel: +49 (0)2 02 / 40 45-0  
E-Mail: info@wera.de

## Kraftform Kompakt Stubby magazine 1, 6 pieces

Kraftform Kompakt Stubby - With Kraftform bit-holding Stubby screwdriver handle.



### Set contents:

#### 851/1 BTZ bits, PH 1 x 25 mm



05056420001

1x PH 1 x 25 mm

05056422001

1x PH 2 x 25 mm

#### 867/1 BTZ TORX® bits, TX 15 x 25 mm



05066122001

1x TX 15 x 25 mm

05066124001

1x TX 20 x 25 mm

05066126001

1x TX 25 x 25 mm

#### 800/1 BTZ bits, 0.8 x 5.5 x 25 mm



05056064001

1x 0.8 x 5.5 x 25 mm

### Web link

[https://products.wera.de/en/kraftform\\_kompakt\\_kraftform\\_kompakt\\_stubby\\_with\\_kraftform\\_bit-holding\\_stubby\\_screwdriver\\_handle\\_kraftform\\_kompakt\\_stubby\\_magazin\\_1.htm](https://products.wera.de/en/kraftform_kompakt_kraftform_kompakt_stubby_with_kraftform_bit-holding_stubby_screwdriver_handle_kraftform_kompakt_stubby_magazin_1.htm)

Wera - Kraftform Kompakt Stubby Magazin 1  
05008873001 - 4013288217769

Wera Werkzeuge GmbH  
Korzter Straße 21-25  
D-42349 Wuppertal  
Tel: +49 (0)2 02 / 40 45-0  
E-Mail: [info@wera.de](mailto:info@wera.de)