

8003 B Zyklop Metal Ratchet with push-through square and 3/8" drive, 3/8" x 222 mm

The Zyklop Metal Ratchet Push, 3/8"



EAN:	4013288174031	Size:	305x50x28 mm
Part number:	05004033001	Weight:	334 g
Article number:	8003 B	Country of origin:	CZ
		Customs tariff number:	82041100

- Extremely slim ratchet with long lever
- Return angle of only 4.7°
- Absolutely smooth switchover of the non-detachable push-through square
- Secure socket locking
- For 3/8" square sockets with ball lock

Zyklop Metal ratchet with push-through square. Slim design for work in even very confined spaces. The dual ratchet teeth design makes a 76 fine-pitched toothing out of 38 robust teeth that allows a return angle of only 4.7°. Very simple direction change by actuating the non-detachable push-through square; for the first time also with secure socket locking function. Forged, full metal ratchet (chrome-molybdenum steel) for particularly high robustness and long service life.



Web link

https://products.wera.de/en/ratchets_and_accessories_the_zyklop_ratchets_the_zyklop_ratchets_3_8_the_zyklop_metal_ratchet_push_3_8_8003_b.html

Wera - 8003 B
05004033001 - 4013288174031

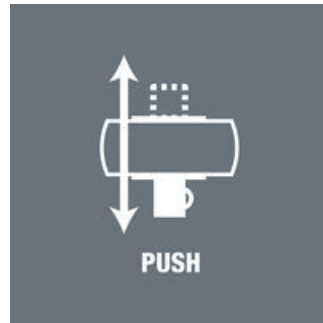
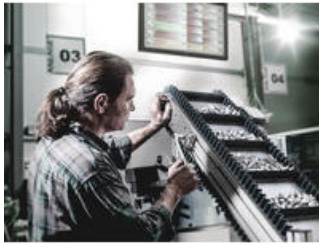
Wera Werkzeuge GmbH
Korzter Straße 21-25
D-42349 Wuppertal
Tel: +49 (0)2 02 / 40 45-0
E-Mail: info@wera.de

8003 B Zyklop Metal Ratchet with push-through square and 3/8" drive, 3/8" x 222 mm

The Zyklop Metal Ratchet Push, 3/8"



Zyklop Metal Push



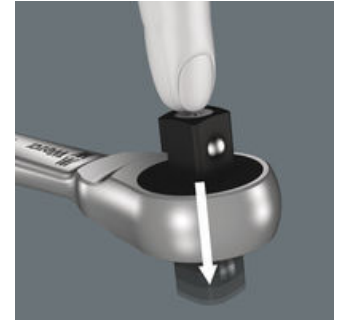
Due to the ever-more confined working environment, space is becoming more and more an issue for the application of ratchets. Our product developers therefore intensively occupied themselves with the issue of confined working spaces, and Wera has now solved this problem. The extremely slim and robust Zyklop Metal ratchet with a long lever was what emerged. When the socket must not get lost and a coincidental change of direction has to be avoided at all cost, the Zyklop Metal Push is the correct choice.

Slim design



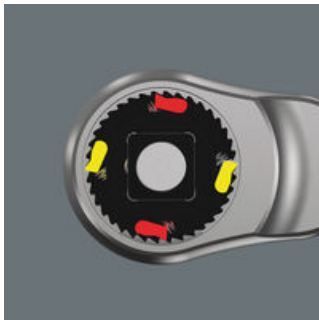
Forged, full metal ratchet (chrome-molybdenum) that is extremely robust with a long service life; slim design to enable work in very confined spaces.

Square drive



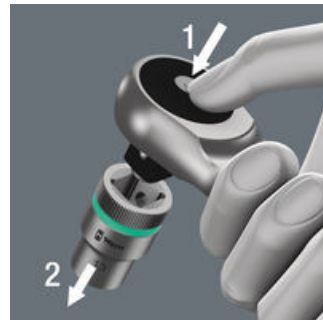
Smooth push-through mechanism, that cannot get lost.

Dual ratchet teeth



The dual-ratchet-teeth design means that a 76 fine-toothed division can be achieved from the 38 robust teeth with a return angle of only 4.7°.

Ball lock



The ball lock ensures sockets and accessories fit securely, providing increased safety during operation. A short press on the release button allows the tool to be changed quickly.

Web link

https://products.wera.de/en/ratchets_and_accessories_the_zyklop_ratchets_the_zyklop_ratchets_3_8_the_zyklop_metal_ratchet_push_3_8_8003_b.html

Wera - 8003 B
05004033001 - 4013288174031

Wera Werkzeuge GmbH
Korzter Straße 21-25
D-42349 Wuppertal
Tel: +49 (0)2 02 / 40 45-0
E-Mail: info@wera.de

8003 B Zyklop Metal Ratchet with push-through square and 3/8" drive, 3/8" x 222 mm

The Zyklop Metal Ratchet Push, 3/8"



Further versions in this product family:



inch



mm



mm



mm

05004033001	3/8"	222.0	27	29
-------------	------	-------	----	----

Web link

https://products.wera.de/en/ratchets_and_accessories_the_zyklop_ratchets_the_zyklop_ratchets_3_8_the_zyklop_metal_ratchet_push_3_8_8003_b.html

Wera - 8003 B

05004033001 - 4013288174031

Wera Werkzeuge GmbH

Korzter Straße 21-25

D-42349 Wuppertal

Tel: +49 (0)2 02 / 40 45-0

E-Mail: info@wera.de