

The Zyklop Speed Ratchet, 1/4"



EAN:	4013288121103	Size:	215x170x50 mm
Part number:	05003533001	Weight:	1512 g
Article number:	8100 SA 2	Country of origin:	CZ
		Customs tariff number:	82041100

- Combines five different types of a ratchet in one
- Flywheel design and easy-to-grip free-turning sleeve for very high working speeds
- 42-piece set in a robust metal case
- Freely pivoting ratchet head
- With Take it easy tool finder: colour coding by size

42-piece Zyklop set in robust metal case: Zyklop ratchet with 1/4" drive. The 72 fine-pitched teeth enable a low return angle of only 5°. The ratchet head pivots freely and can be locked into any position by using the slide switch that is positioned on either side. It is even possible to work conveniently in very confined and difficult-to-access areas with enhanced hand clearance. The predefined locking positions at 0°, 15° und 90°, both to the right and left, ensure safe working without any slipping of the ratchet head. The ratchet can be used as a conventional screwdriver in the 0° position by attaching an adaptor and a bit. The flywheel design ensures rapid screwdriving. The rotation-symmetric construction of the Kraftform handle and the free-turning sleeve support rapid twisting. The outstanding design of the Kraftform handle fits perfectly into the hand preventing hand injuries such as blisters and calluses. The hard materials used for the handle ensure quick and easy hand repositioning without any danger of the skin "sticking" to the handle. The softer anti-slip zones enable the low-loss transfer of high torque. For 1/4" square sockets as well as 1/4" adaptors with square drive, equipped with ball lock. Including 13 Zyklop sockets, 2 Zyklop extensions with free-turning sleeve, 1 wobble extension, 1 T-handle, 1 universal joint, 1 adaptor with quick-release chuck, 22 bits. "Take it easy" Tool Finder with colour coding according to sizes.

**Web link**

https://products.wera.de/en/ratchets_and_accessories_the_zyklop_ratchets_the_zyklop_ratchets_1_4_the_zyklop_speed_ratchet_1_4_8100_sa_2.html

Wera - 8100 SA 2
 05003533001 - 4013288121103

Wera Werkzeuge GmbH
 Korzter Straße 21-25
 D-42349 Wuppertal
 Tel: +49 (0)2 02 / 40 45-0
 E-Mail: info@wera.de

The Zyklop Speed Ratchet, 1/4"

Zyklop "6 in 1"



Incredibly fast 1/4" Zyklop Speed ratchet with pivoting ratchet head and 5 predefined locking positions



1. Fine-tooth ratchet 2. Flex-head ratchet 3. Angle ratchet 4. Quick-release ratchet 5. Power ratchet 6. Screwdriver

Pivots freely



The ratchet head pivots freely and can be locked into any defined position by using the slide switch that is positioned on either side. It is even possible to work in very confined and difficult-to-access areas with enhanced hand clearance. The predefined locking at 0°, 15° and 90°, both to the right and left, ensure safe working without any slipping of the ratchet head.

Fast movers



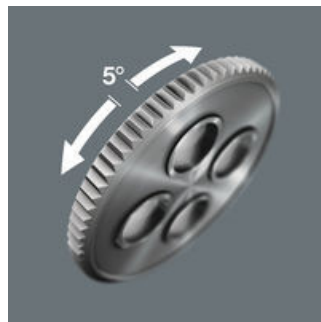
The Zyklop Speed ratchets are really fast movers. The gyrating mass design means that screwdriving is accelerated. The rotation-symmetric structure of the Kraftform handle and the free-turning sleeve reinforce this rapid twisting process, particularly when the ratchet does not engage due to too little resistance in the thread.

Simple direction change



All Zyklop Speed ratchets feature a thumbwheel that can be used to quickly and easily switch between clockwise and anticlockwise rotation, at any position. No complicated handling, no loss of time!

Low return angle



The reversible ratchet with 72 fine-pitched teeth has a low return angle of only 5°. This short stroke allows fast and precise work in all types of installation.

Screwdriver



The ratchet can be used as a conventional screwdriver in the 0° position by attaching a bitholding adaptor and a bit.

Two-tone foam insert



Perfectly conceived in every detail: the storage case for the Zyklop Speed ratchet sets! The two-tone foam insert section means that the tools can be quickly and reliably replaced, and that missing tools can be detected immediately. The tools and their position can be clearly seen in the lid where they have been laser-etched, ensuring that they are legible even when the insert section is covered with grease, dirt or oil. Additionally, the foam section can be removed and placed in the drawer of a tool cabinet or trolley.

Web link

https://products.wera.de/en/ratchets_and_accessories_the_zyklop_ratchets_the_zyklop_ratchets_1_4_the_zyklop_speed_ratchet_1_4_8100_sa_2.html

Wera - 8100 SA 2
05003533001 - 4013288121103

Wera Werkzeuge GmbH
Korzter Straße 21-25
D-42349 Wuppertal
Tel: +49 (0)2 02 / 40 45-0
E-Mail: info@wera.de

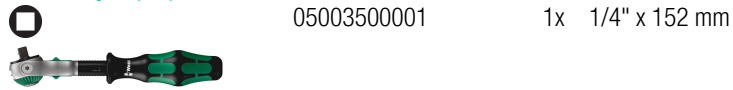
8100 SA 2 Zyklop Speed Ratchet Set, 1/4" drive, metric, 42 pieces



The Zyklop Speed Ratchet, 1/4"

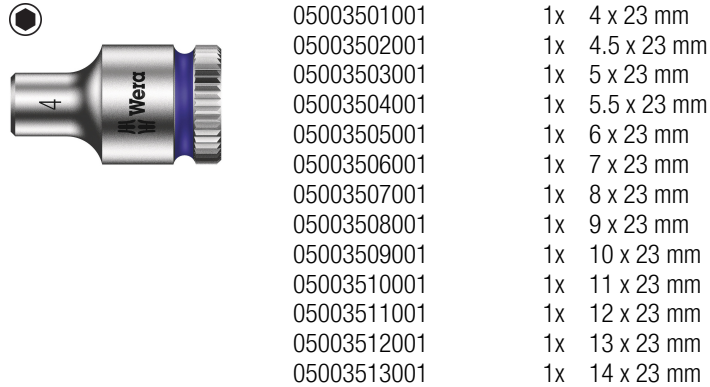
Set contents:

8000 A Zyklop Speed Ratchet with 1/4" drive, 1/4" x 152 mm



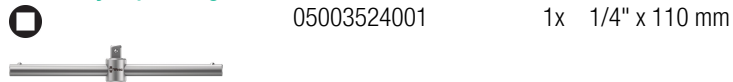
05003500001 1x 1/4" x 152 mm

8790 HMA Zyklop 1/4" socket, 4 x 23 mm



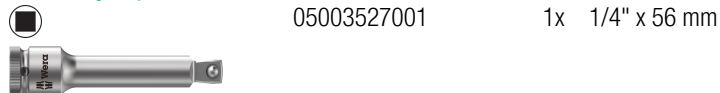
05003501001 1x 4 x 23 mm
05003502001 1x 4.5 x 23 mm
05003503001 1x 5 x 23 mm
05003504001 1x 5.5 x 23 mm
05003505001 1x 6 x 23 mm
05003506001 1x 7 x 23 mm
05003507001 1x 8 x 23 mm
05003508001 1x 9 x 23 mm
05003509001 1x 10 x 23 mm
05003510001 1x 11 x 23 mm
05003511001 1x 12 x 23 mm
05003512001 1x 13 x 23 mm
05003513001 1x 14 x 23 mm

8789 A Zyklop sliding T-handle, 1/4", 1/4" x 110 mm



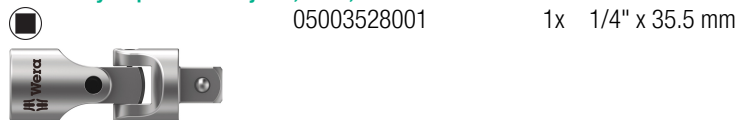
05003524001 1x 1/4" x 110 mm

8794 A Zyklop wobble extension, 1/4", 1/4" x 56 mm



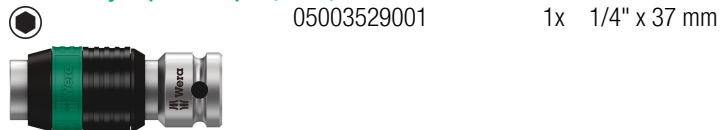
05003527001 1x 1/4" x 56 mm

8795 A Zyklop universal joint, 1/4", 1/4" x 35.5 mm



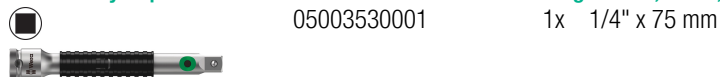
05003528001 1x 1/4" x 35.5 mm

8784 A1 Zyklop bit adaptor, 1/4", 1/4" x 37 mm



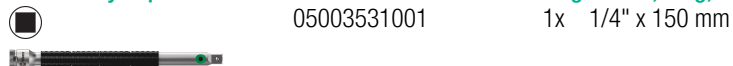
05003529001 1x 1/4" x 37 mm

8796 SA Zyklop "flexible-lock" extension with free-turning sleeve, short, 1/4", 1/4" x 75 mm



05003530001 1x 1/4" x 75 mm

8796 LA Zyklop "flexible-lock" extension with free-turning sleeve, long, 1/4", 1/4" x 150 mm



05003531001 1x 1/4" x 150 mm

Web link

https://products.wera.de/en/ratchets_and_accessories_the_zyklop_ratchets_the_zyklop_ratchets_1_4_the_zyklop_speed_ratchet_1_4_8100_sa_2.html

Wera - 8100 SA 2
05003533001 - 4013288121103

Wera Werkzeuge GmbH
Korzter Straße 21-25
D-42349 Wuppertal
Tel: +49 (0)2 02 / 40 45-0
E-Mail: info@wera.de

8100 SA 2 Zyklop Speed Ratchet Set, 1/4" drive, metric, 42 pieces



The Zyklop Speed Ratchet, 1/4"

851/1 Z bits, PH 1 x 25 mm



05072070001	1x	PH 1 x 25 mm
05072072001	1x	PH 2 x 25 mm
05072074001	1x	PH 3 x 25 mm

855/1 Z bits, PZ 1 x 25 mm



05072080001	1x	PZ 1 x 25 mm
05072082001	1x	PZ 2 x 25 mm
05072084001	1x	PZ 3 x 25 mm

867/1 Z TORX® B0 bits with bore hole, TX 8 x 25 mm



05066498001	1x	TX 8 x 25 mm
05066499001	1x	TX 9 x 25 mm
05066500001	1x	TX 10 x 25 mm
05066505001	1x	TX 15 x 25 mm
05066510001	1x	TX 20 x 25 mm
05066515001	1x	TX 25 x 25 mm
05066525001	1x	TX 30 x 25 mm
05066530001	1x	TX 40 x 25 mm

840/1 Z bits, 3 x 25 mm



05056315001	1x	3 x 25 mm
05056320001	1x	4 x 25 mm
05056325001	1x	5 x 25 mm
05056330001	1x	6 x 25 mm
05056335001	1x	8 x 25 mm

800/1 Z bits, 0.6 x 4.5 x 25 mm



05072055001	1x	0.6 x 4.5 x 25 mm
05072059001	1x	1 x 5.5 x 25 mm
05072063001	1x	1.2 x 8 x 25 mm

Web link

https://products.wera.de/en/ratchets_and_accessories_the_zyklop_ratchets_the_zyklop_ratchets_1_4_the_zyklop_speed_ratchet_1_4_8100_sa_2.html

Wera - 8100 SA 2
05003533001 - 4013288121103

Wera Werkzeuge GmbH
Korzter Straße 21-25
D-42349 Wuppertal
Tel: +49 (0)2 02 / 40 45-0
E-Mail: info@wera.de