

L I N W O O D

New for autumn 2023...

TANGO WEAVES II



Tango Weaves II is a notable addition to our woven fabrics. It is produced in Italy by a family-owned business that Linwood has worked with for many years. Four versatile, textured designs woven with cotton, linen, and viscose yarns in vibrant hues and timeless neutrals exude vitality and undeniable appeal. The collection is suitable for both domestic and contract upholstery, curtains and blinds.



LF2388C / 12 Emerald

Wiggle

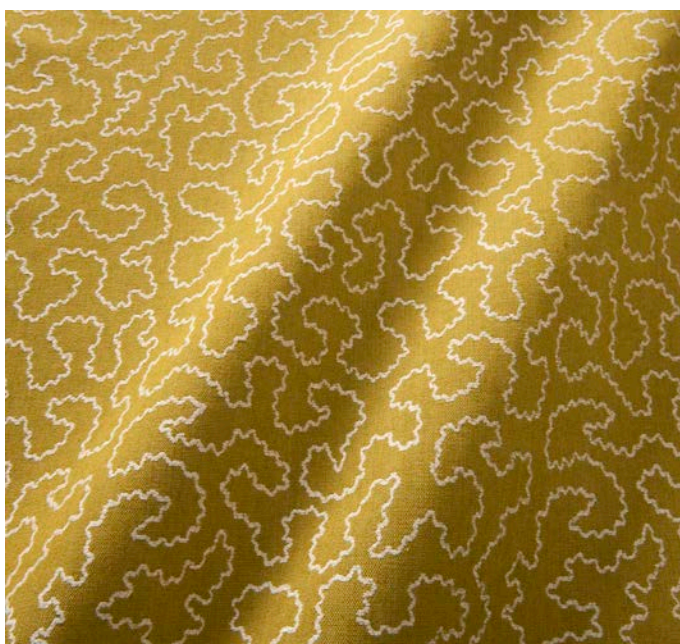
Woven stylised organic coral design with chenille weft.

LF2388C / LF2418FR

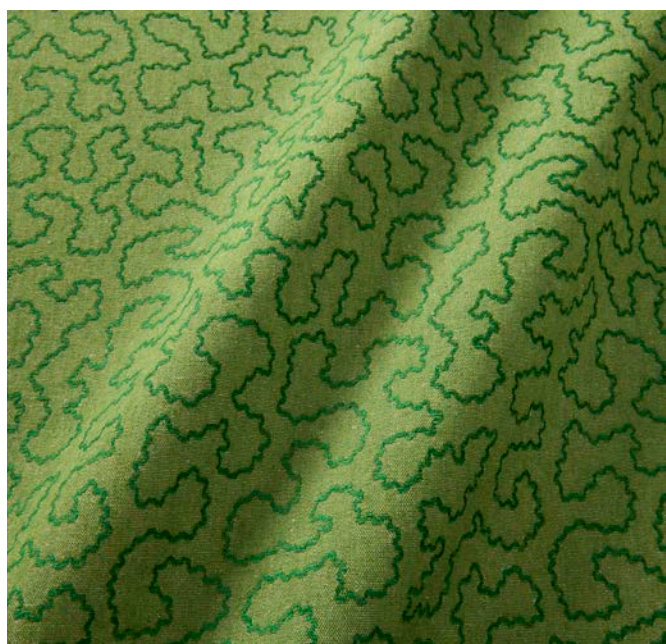
Available in 16 colourways



LF2388C / 12 Cornflower



LF2388C / 01 Tuscany



LF2388C / 14 Fern



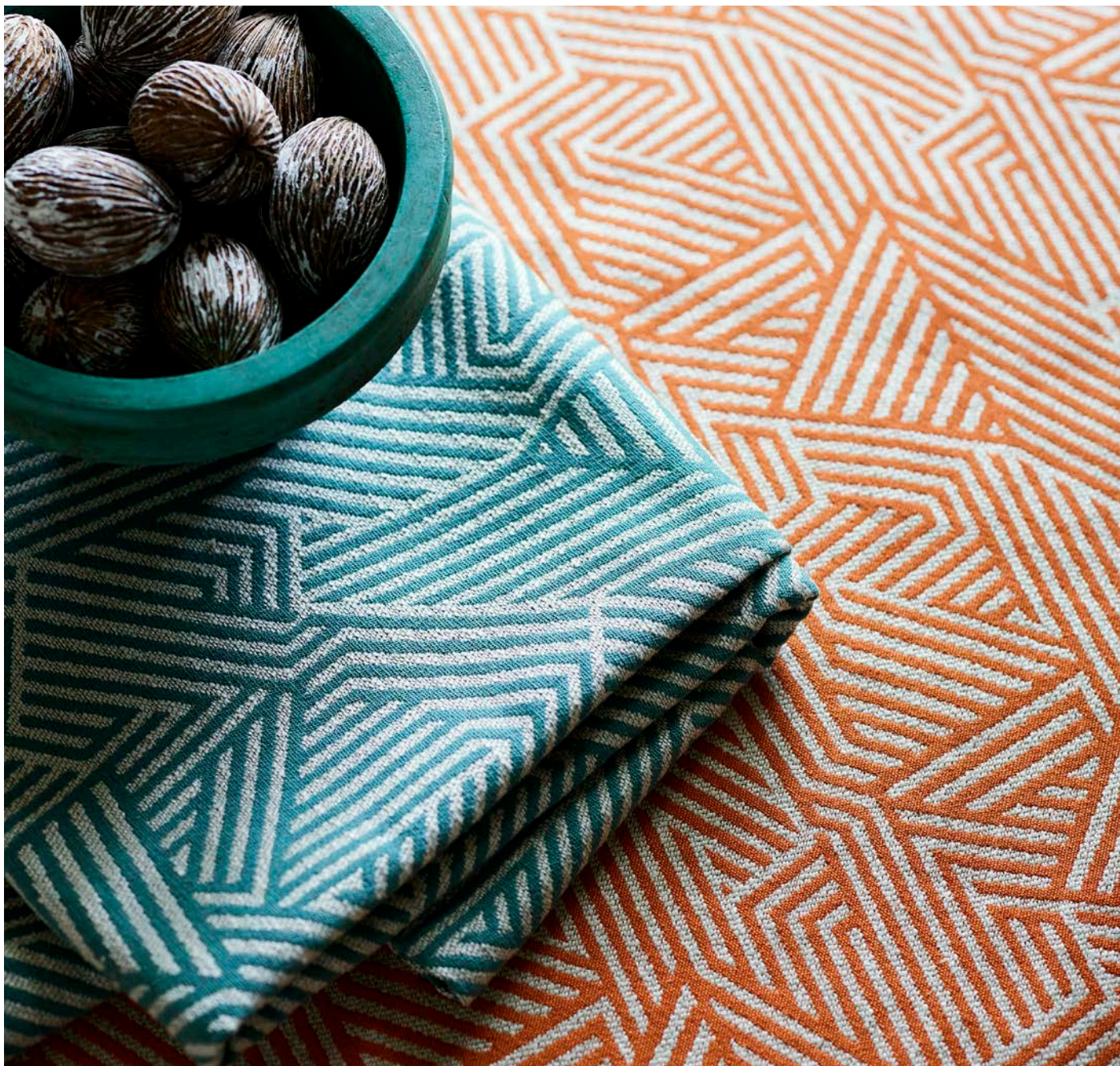
LF2390C / 07 Teal

Sashay

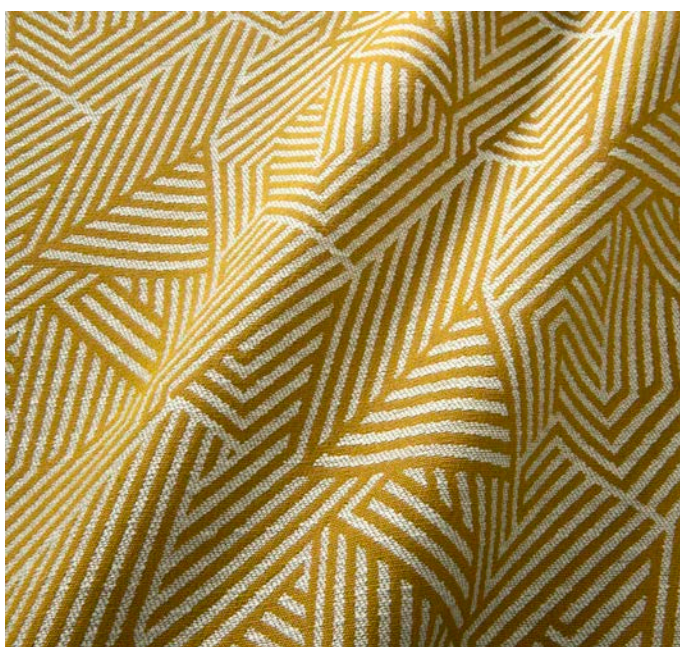
Sashay is an intriguing trellis pattern with a basket weave.

LF2390C / LF2420FR

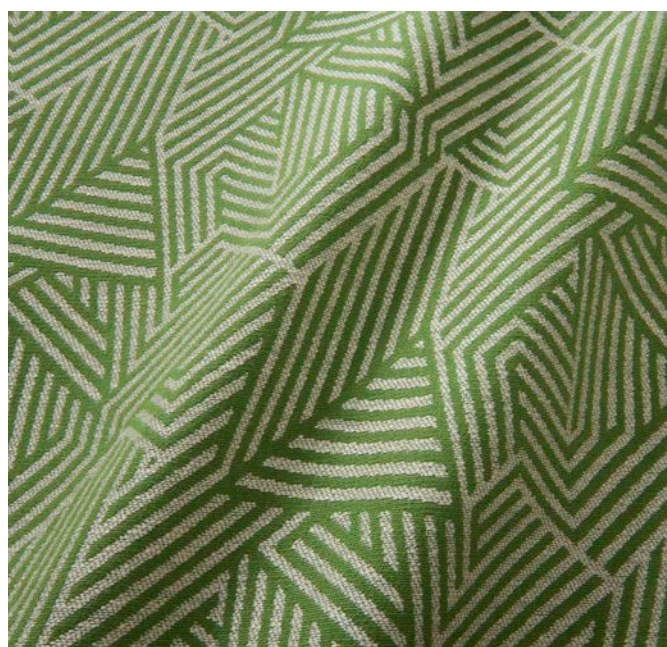
Available in 6 colourways



LF2390C / 07 Teal & LF2390C / 04 Tangerine



LF2390C / 03 Honeypot



LF2390C / 08 Spring Green



Chicane

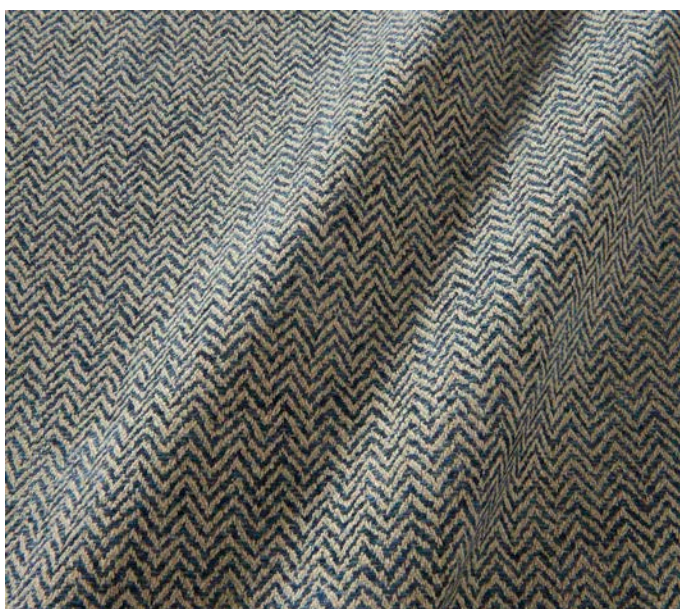
Organic small scale herringbone woven with space dyed chenille yarns.

LF2389C / LF2419FR

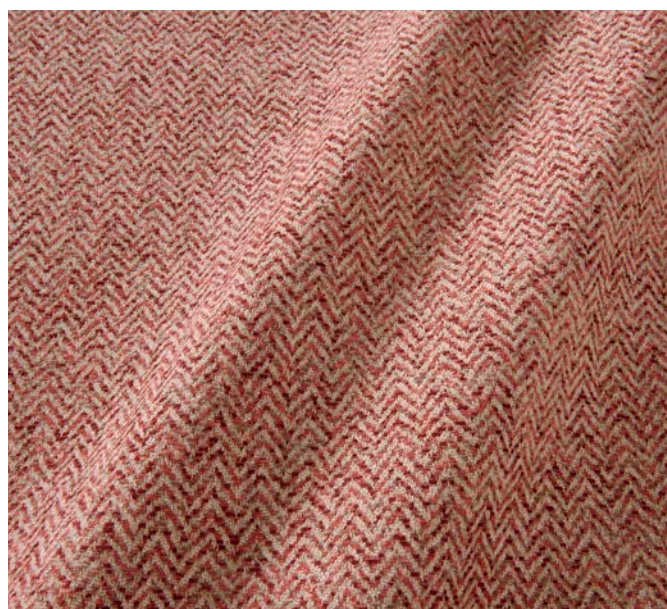
Available in 5 colourways



LF2389C / 02 Lapis & LF2389C / 05 Forest



LF2389C / 03 Navy



LF2389C / 01 Raspberry



Pivot

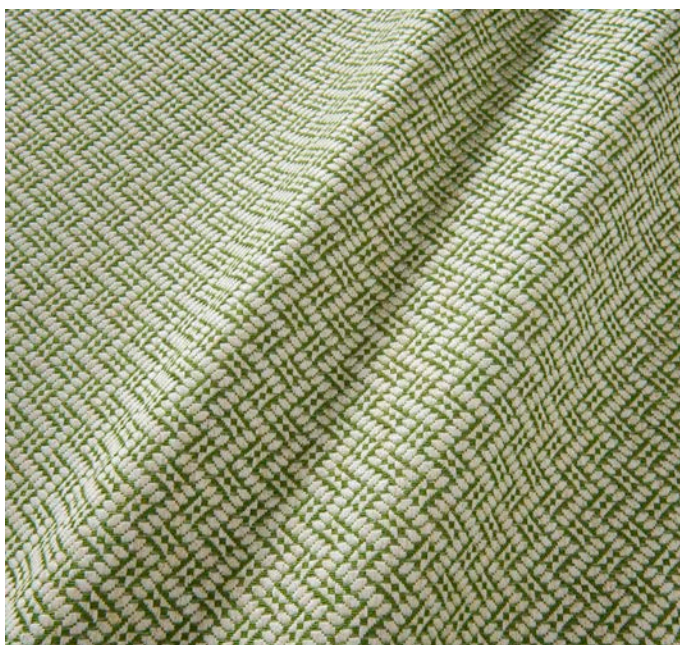
A durable woven fabric with a sophisticated abstract geometric pattern that complements any style of furniture.

LF2390C / LF2420FR

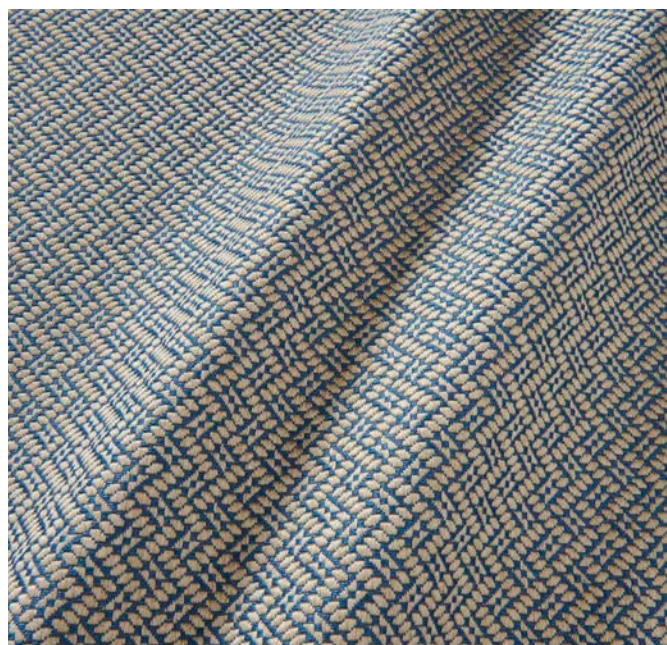
Available in 9 colourways



LF2390C /02 Apricot & LF2390C /06 Inca



LF2390C /04 Pear



LF2390C /05 Capri

TANGO WEAVES II

Stock and samples available now.

Pattern books available from the end of October 2023.

