



SmartHome WiFi Pet Feeder with built-in camera

6
Liters

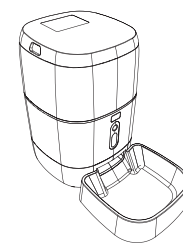


Product Manual

Model: SC-PF100

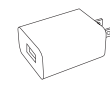
Table of Contents

Please read this manual carefully before use to ensure safe use of the SmartHome WiFi Pet Feeder.



Product Introduction	2
Operation Guide	3-6
First Time Use	3
Function Description	3
Register App	4
Setup Pet Feeder with eco4life App	5-6
Cleaning / maintenance	7
Warranty	8
Technical Support	9

Accessories



Adapter



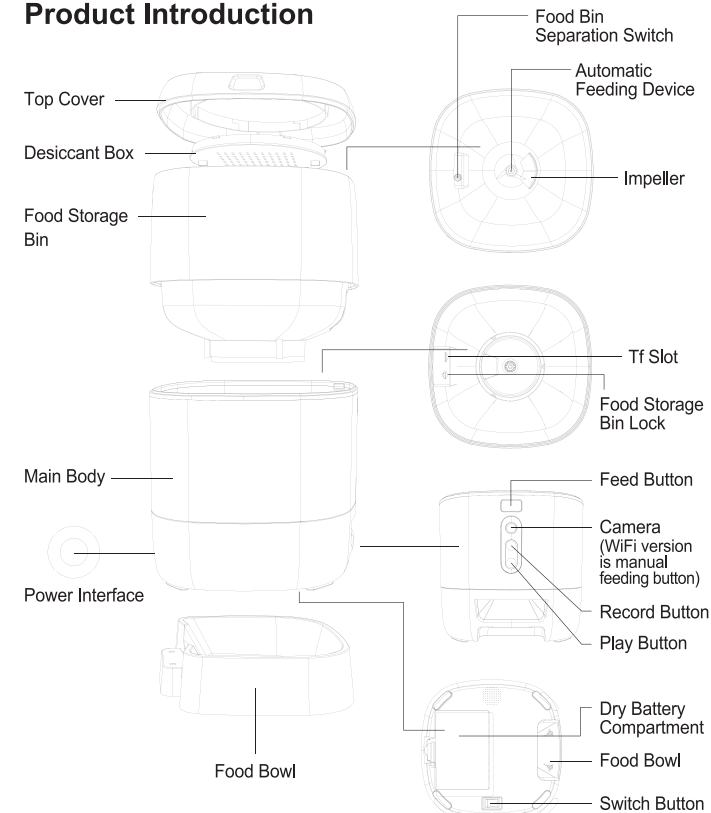
USB Cable



Desiccant

1

Product Introduction



2

Operation Guide

First Time Use

1. Open the top cover of the feeder and remove the power cord adapter from the bucket.
2. Plug the power cord into the power connector and the rear of the main unit and connect the adapter to power.
3. Place the main unit in a horizontal position and the food bowl is installed at the corresponding position of the main unit.
4. Add pet dry food to the feeder bucket.
5. The desiccant is placed in the desiccant box by default. Please replace it regularly for long-term use. (do not use cleaning)
6. The battery compartment can be installed with (3) D batteries for manual feeding when there is no electricity (optional).
7. Bind the feeder to the eco4life app to set up the feeding and planning of the pet.

Function Description

Feed Button: Short press to feed one portion. Long press for 5 seconds to restore the factory settings.

Record Button: Press and hold the "Record Button" to record the sound to remind the pet to eat before feeding.

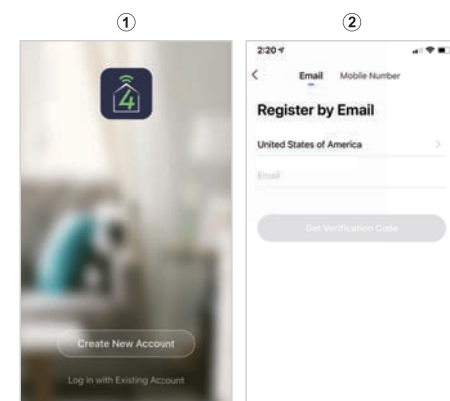
Play Button: Plays the recorded sound.

Dry Battery Compartment: (3) D batteries can be installed for power supply.

3

Register APP

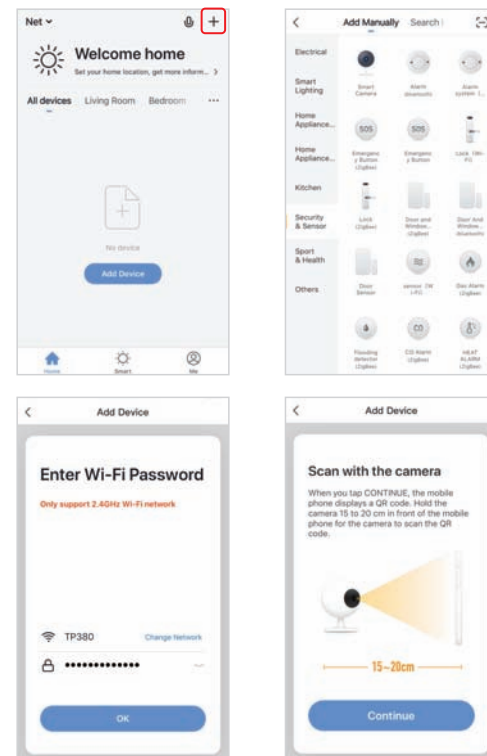
1. Open the eco4life App.
2. Click "Create a new account".
3. Select the country and enter email. Click to get the verification code.
4. Enter the received verification code for verification.
5. Set up login password and login successfully.



4

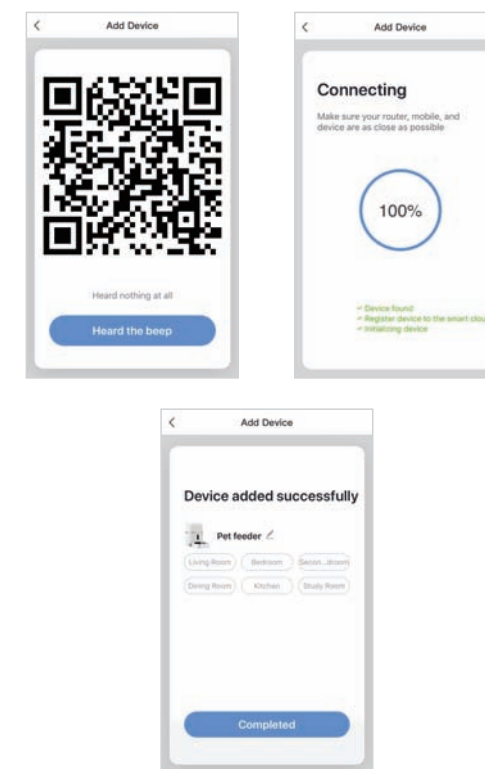
Setup Pet Feeder with eco4life App

Open the eco4life app. Click "add device", enter Wifi password and confirm, connecting till "device added successfully."



5

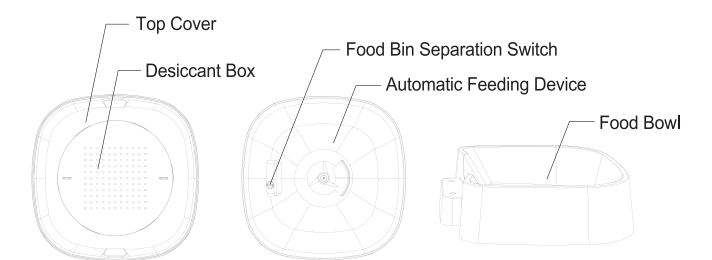
Setup Pet Feeder with eco4life App



6

Cleaning / Maintenance

The food bowl and storage bin should be cleaned periodically with a mild cleaning agent to avoid bacteria build up.



1. The parts above can be removed from the main feeder and cleaned with mild cleaning agent and water.
2. The dessicant box in the upper cover is rotated counterclockwise to remove it.
3. The food bin is removed by rotating the "Food Bin Separation Switch".
4. The bowl is removed by pulling down.
5. After cleaning, make sure all parts are completely dry before re-assembling.

*This feeder is compatible with dry food kibble smaller than 12mm.
Do not use freeze dried food.

7