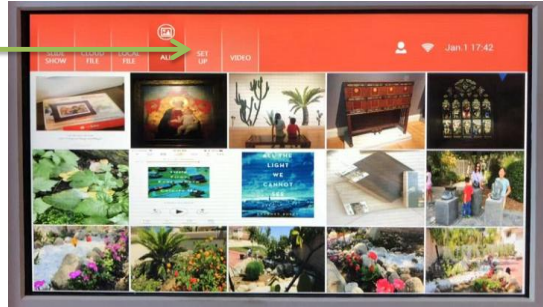


HOW TO UPDATE YOUR AIRTAKE FRAME

1 make sure the airtake frame connected WIFI

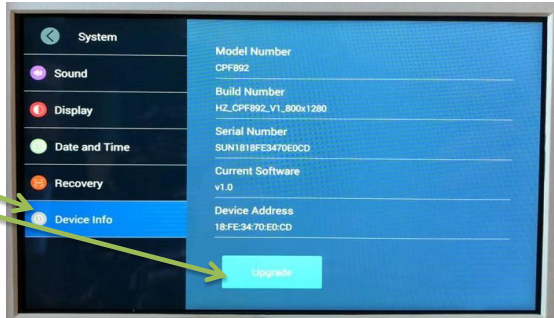
STEP 1 TURN ON YOUR AIRTAKE FRAME
PRESS THE **"SET UP"** BUTTON



STEP 2 IN THE SETTINGS PAGE
PRESS THE **"SYSTEM SETTINGS"** BUTTON



STEP 3 PRESS THE **"Device Info"** BUTTON
THEN PRESS THE **"Update"** BUTTON



STEP 4 PRESS THE **"Click for update"** BUTTON



STEP 5 CONFIRM TO UPDATE PRESS THE **"Conirm"** BUTTON



STEP 6 SYSTEM DOWNLOAD COMPLETED, PRESS THE **"Update"** BUTTON



STEP 7 AFTER THE SYSTEM UPDATE, THE FRAME WILL DISPLAY AS RIGHT THEN PRESS THE "POWER" BUTTON ON THE BACK OF THE FRAME TO RESTART THE FRAME

CONGRATULATIONS, YOUR FRAME UPDATE SUCCESSFUL

