



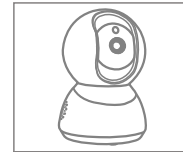
Smart WiFi Indoor PTZ Security Camera



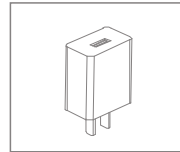
Model No: SC-RIPC-2001

Whats in the box?

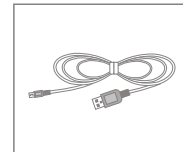
Parts Guide



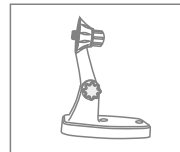
WiFi Camera



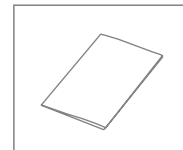
Power Adapter



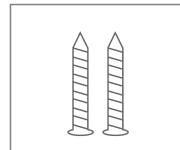
USB Cable



Bracket



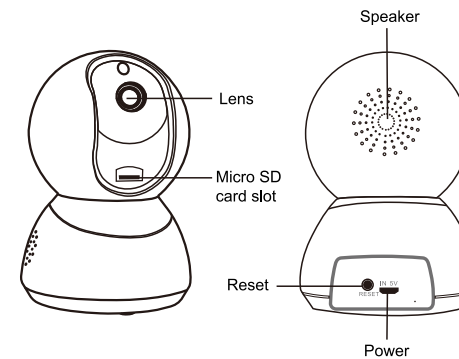
User Manual



Screw Kits

1

Description?



Power	DC5V+-10%
SD card slot	Supports local SD Card storage (max. 128GB)
Microphone	Captures sound for your video
Reset	Press and hold the 'reset' for 5 seconds to reset the device (if you have modified settings, they will return to factory defaults)

2

Install Optionally

1. Mount the camera mounting on the wall with 2 screws.
2. Install the camera on the camera mounting.

Tips:

1. Try to keep away from the metal space.
2. Avoid to be blocked by the furniture, microwave oven and so on
3. Avoid the space where the audio, Video and data lines are wound, and keep the space away from them as large as possible.
4. Ensure that as close as possible to the coverage of wireless Wi-Fi signals
5. In the new network environment, please press the reset hole about 5 seconds, then connect to the network.

3

Features

Video Flip

Flip your video stream vertically

Motion detection

Motion sensors will notify you when movement is detected

Record

Record every moment using high capacity SD card storage

Rotation Remote View

Just click your finger on the direction function of app accordingly, our camera will provide you 355 degree horizontal pan, 115 degree vertical-angle tilt, these features bring you a nearly 360 degree view coverage.

Motion Tracking

Identify the movement of the object in the monitoring area, and automatically control the camera to track and record the moving object.

4

Connecting to Device

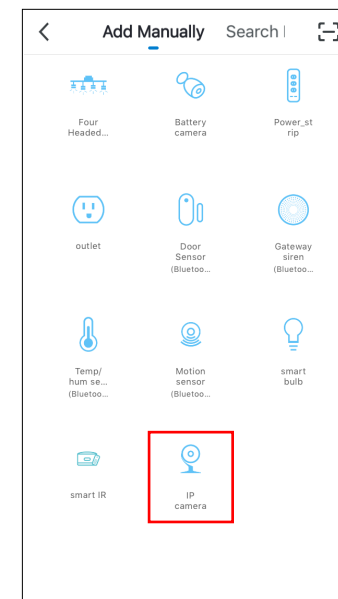
- The smart home device only supports 2.4Ghz frequency. If your router supports both the 2.4Ghz and 5Ghz frequency, the 5G network is usually labeled as "Router-5G" so please connect to the other one.

- Each smart home device can only be registered to one account but it can be shared with others by using the sharing function of the app.

1. Download the free eco4life app from the Apple App store or Google Play store
2. Follow the on screen instructions to create account for eco4life
3. Plug in the IP Camera into an outlet
4. Press the "+" icon in the top right corner of the app

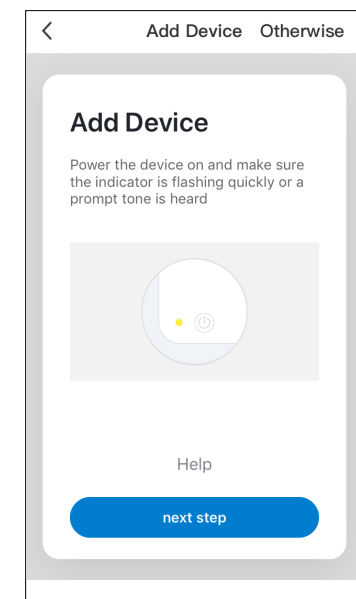
5

5. Press the "IP Camera" icon from the list



6

6. Follow the instructions in the app to connect the device



7