

How-To-Use IFTTT to Control Your Smart Devices

1. Let's Get Started

Prior to using IFTTT to control your devices, make sure that the following conditions are met:

- Make sure you have a stable Wi-Fi network to access the IFTTT server.
- A device to enable use of IFTTT such as computer or a smart mobile device.
- You have an IFTTT Account (This can be replaced by a Facebook or Google Account).
- You have an eco4life app and have registered an account.
- Smart Device/s that you want IFTTT to control.

2. Add devices in eco4life app (Refer to App Instruction)

You can skip this part if you've already added some device to your eco4life account. The device's name will therefore be recognized.

2.1. Download the eco4life app (Refer to App Instruction)

You can scan the QR code below to download the eco4life app:
You can also search "eco4life" in either App Store or Google Play to install the app.



2.2. Register an eco4life account and sign in. (Refer to App Instruction)

Open the eco4life app, tap "Register" to register an account, then sign in on the app.

2.3. Add device and change device's name (Refer to App Instruction)

Sign in on your eco4life account, add the device and assign a name that can easily be recognized, such as "bedroom light".

3. IFTTT Set-up and Enabling the eco4life Skill

User can configure IFTTT through web or app. We take app configuration as an example in this guide.

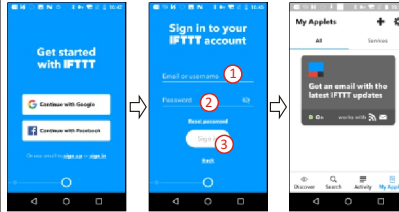
Web: <https://ifttt.com/discover> (Configuration through web is basically the same as app)

App: Search "IFTTT" in App Store or Google Play to install the app.

3.1. Sign in on IFTTT app

You can skip this part if you have signed in on IFTTT app.

1. Open the IFTTT app by tapping the app icon on your mobile device.
2. Type in your IFTTT account and password, then tap "Sign in". IFTTT account could be replaced by Facebook's account or Google's account.
3. When you sign in IFTTT app successfully, the display in the app is shown as below.



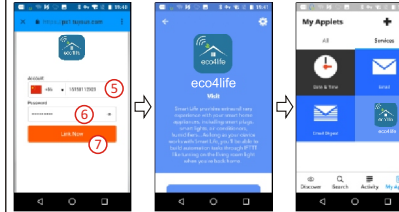
3.2. Link eco4life account to IFTTT

You can skip this part if you have linked eco4life account to IFTTT

1. Tap "Search" below the screen, then enter "eco4life" in the search box, select the "eco4life" option, and tap "Connect" to enable eco4life.



2. You will be redirected to the account link page. Type in your eco4life account and password, don't forget to select the country/region where your account belongs to. Then tap "Link Now" to link your eco4life account. You can check it in the "Services" of "My Applet".



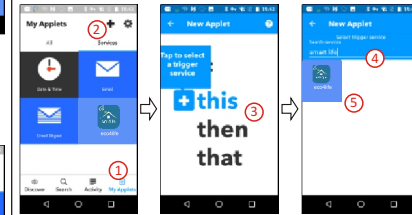
4. Create Applet to control your smart devices (Example 1)

IFTTT is the abbreviation of "If this then that". "Applet" represents a complete task composed of conditions & tasks. "this" represents the condition, while "that" represents the task.

Example 1: create an Applet (If my bedroom light is turned on, the system will send an email to my mailbox automatically)

4.1. Create "this" to configure the trigger

1. Tap "My Applets" tab in IFTTT app, and then tap the "+" symbol on the top right of screen to establish a new Applet.
2. Tap "this" to add a condition in the new page, and then enter "eco4life" in the search box, select the "eco4life" option.



3. Select detail trigger in eco4life, choose the corresponding equipment, and tap the "+" on the top right of screen to save this condition.

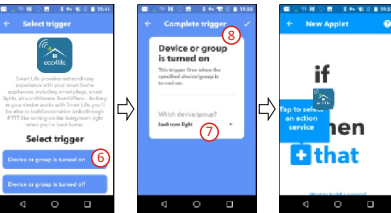
Here we select "Device or group is turned on" & "bedroom light".

①

②

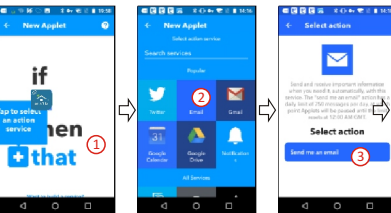
③

④

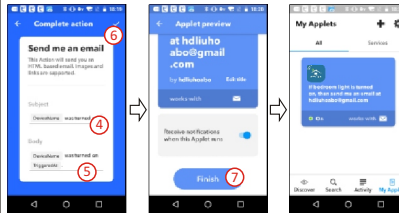


4.2. Create "that" to configure the task

- Step 1, tap "that" to add a task for Applet, and then tap "Email" on the service search page.
- Step 2, select detail action in "Email", such as "Send me an email".
- Step 3, customize the contents of "Subject & Body" in the new page.
- Step 4, tap the "+" on the top right of screen to save this task.
- Step 5, tap "Finish" to complete the creation of this Applet, and it will be saved automatically. You can check it in the "All" of "My Applet".



⑤



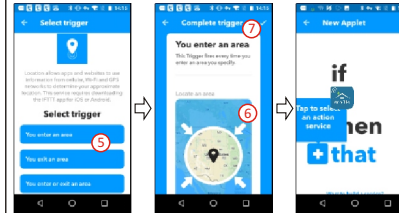
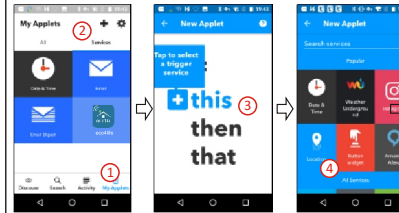
5. Create Applet to control your smart devices (Example 2)

IFTTT is the abbreviation of "If this then that". "Applet" represents a complete task composed of conditions & tasks. "this" represents the condition, while "that" represents the task.

Example 2: create an Applet (If I come to the area, my bedroom light will be turned on automatically)

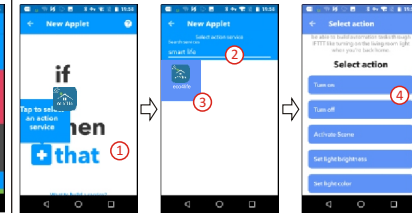
5.1. Create "this" to configure the trigger

- Step 1, tap "My Applets" tab in IFTTT app, and then tap the "+" symbol on the top right of screen to establish a new Applet.
- Step 2, tap "this" to add a condition for Applet, and then tap "Location" on the service search page.
- Step 3, select detail trigger in "Location", such as "You enter an area".
- Step 4, select a specific area by dragging the map or directly entering the location name.
- Step 5, tap the "+" on the top right of screen to save this condition.

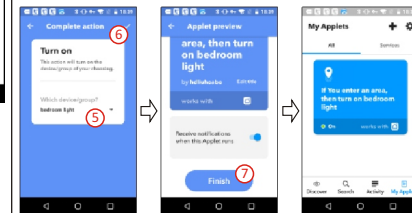


5.2. Create "that" to configure the task

1. Tap "that" to add a task, and then enter "eco4life" in the search box, select the "eco4life" option.
2. Select detail action in eco4life, such as "Turn on".



3. Choose the corresponding equipment, and then tap the "+" on the top right of screen to save this task.
4. Tap "Finish" to complete the creation of this Applet, and it will be saved automatically. You can check it in the "All" of "My Applet". When we turn on the bedroom light (trigger condition), the color of the light will be set to green automatically (to perform the task).



⑧