



CLOUD FRAME



User Manual

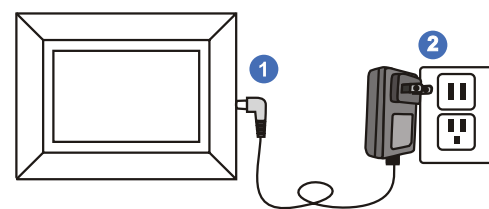
Model #: CPF892

For ongoing product improvement, this manual is subject to modification without prior notice.

What's-In-The Box?

- 1 Cloud Frame
- 1 User manual
- 1 Power Adaptor
- 1 Warranty card
- 1 Cloud Frame Stand

Let's Power Up!



Connect the power adaptor to an outlet to turn the frame on.

Let's download and install "eco4life" App on your phone

Download eco4life app by scanning the QR code or searching "eco4life" from app store.

Once you have installed the "eco4life" app, follow prompt to register an account, login, and start to add your cloud frame.



How to add your Cloud Frame

Step 1: Power on the cloud frame. Tap "SETTINGS" at the top of the frame screen to set up Wi-Fi connection.

Step 2: Launch the eco4life app, press "+" to start adding cloud frame. On the following screen, press "Wi-Fi" to scan your cloud frame.

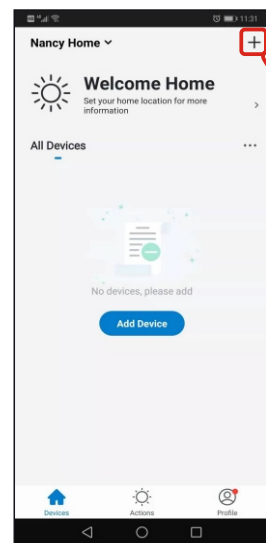


Image 1

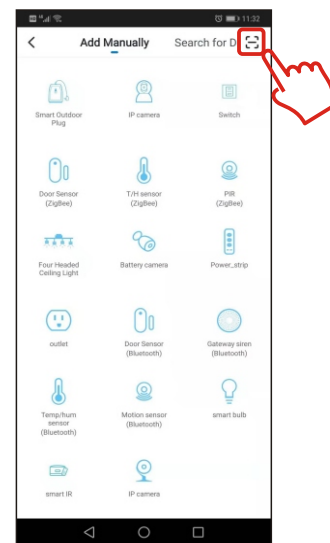


Image 2

Step 3: Use your phone to scan the QR code on the cloud frame screen. Your phone will add your frame automatically (see image 3). The cloud frame will be successfully added to your account shortly (see image 4).

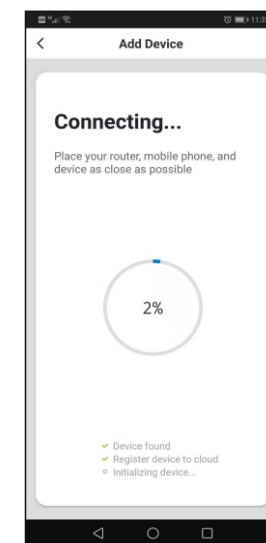


Image 3

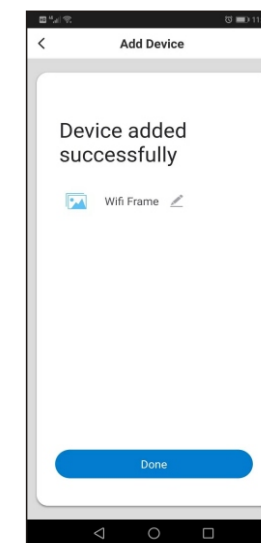
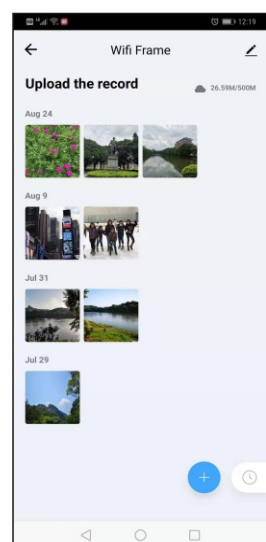
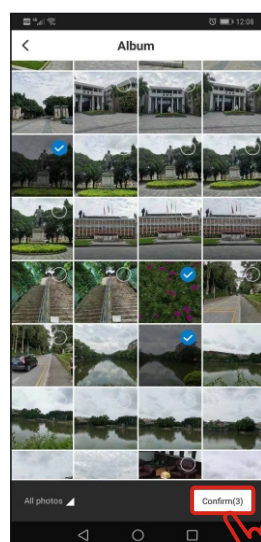
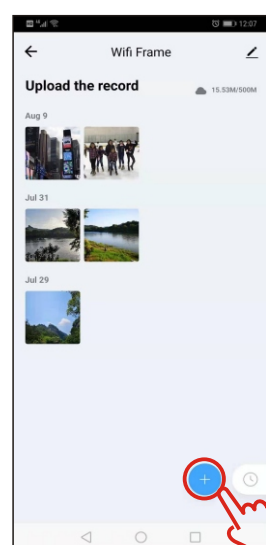
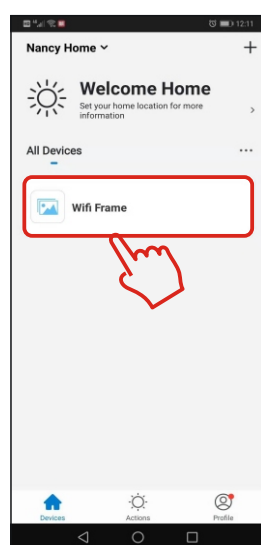


Image 4

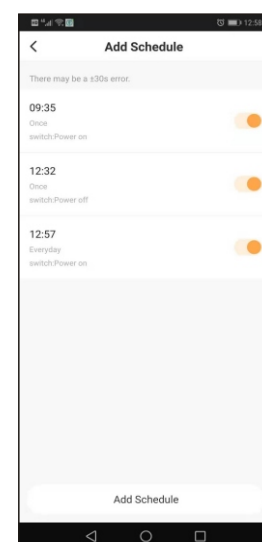
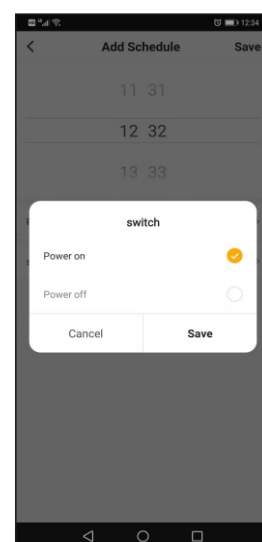
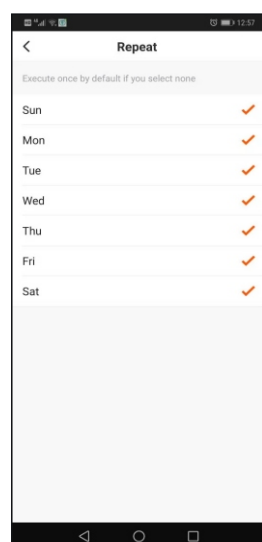
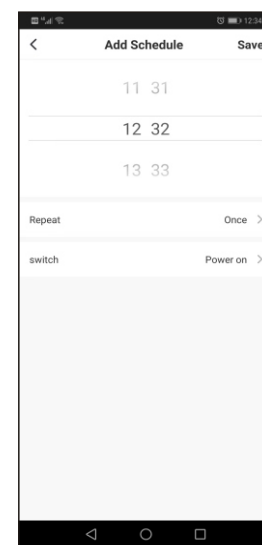
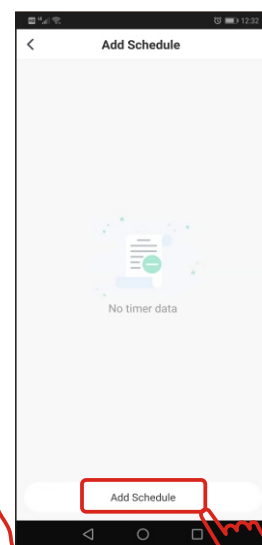
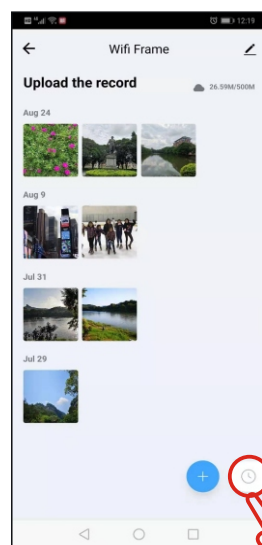
How to send photos to the frame from your phone

Open the eco4life app on your phone, select your "WiFi Frame", tap "+" button at the bottom to select photos. Pick photos you want to send to your frame, then press the "Confirm" button to start the uploading, the uploaded photos will show up on your cloud frame shortly if it is connected to Wi-Fi.



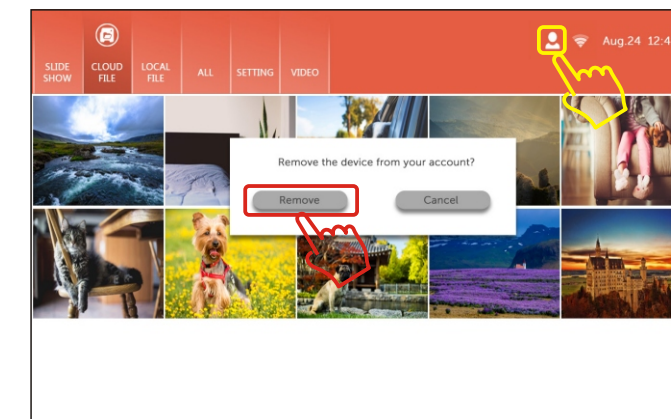
How to auto power on/off the frame

Open the "eco4life" app, choose your "WiFi frame", press the "⌚" button at the bottom right corner. Tap "Add Schedule" at the bottom, pick a time that you want to auto power on/off your frame, then save it.



How to remove a cloud frame from eco4life app

1. On your cloud frame, tap "⌚" at the top of the frame screen, a pop up message will show up, tap "Remove" to confirm removing the frame from your eco4life app.



2. Meanwhile, open the eco4life app, select your "WiFi frame", tap the "⌚" on the upper right corner to edit frame setting, and tap "Remove Device" to completely delete the frame from your account.

