

# Cloud WiFi Digital Photo Frame



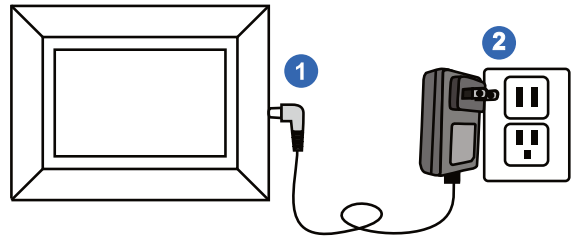
## User Manual

For ongoing product improvement, this manual is subject to modification without prior notice.

## What's-In-The Box?

- 1 WiFi Frame
- 1 User manual
- 1 Power Adaptor
- 1 Warranty card
- 1 WiFi Frame Stand

## Let's Power Up!



Connect the power adaptor to an outlet to turn the frame on.

## Let's download and install "eco4life" app on your phone

Option 1: Scanning the QR code to download "eco4life" app.

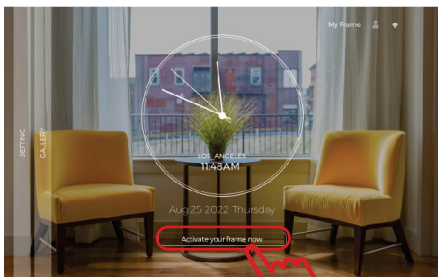
Option 2: Download the app by searching "eco4life" app from Google Play store(Android) or Apple Store(IOS).



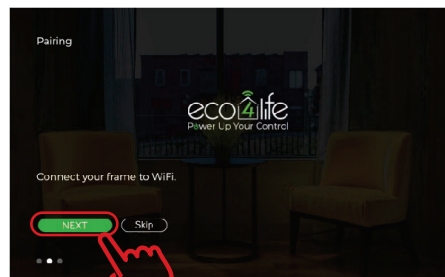
Please enter the "eco4life" app, Click "Sign up" to Register an account and log in.

## Step 1: How to connect your photo Frame to the home WiFi Network

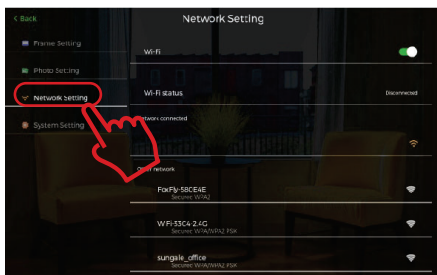
- 1). Power On the Frame.
- 2). Click the "Activate your frame now" button on home screen.
- 3). The "Connect your frame to WiFi" page, click **NEXT** button to the "Network Settings" page.
- 4). Click "Network Setting" button, select your WiFi network name and input the Password.  
(Note: only support 2.4GHz WiFi , not support 5GHz WiFi)



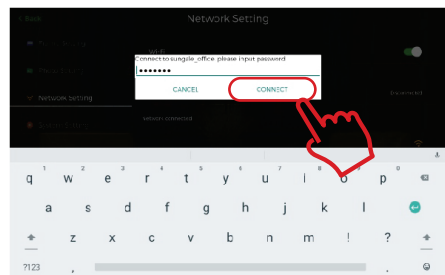
2)



3)



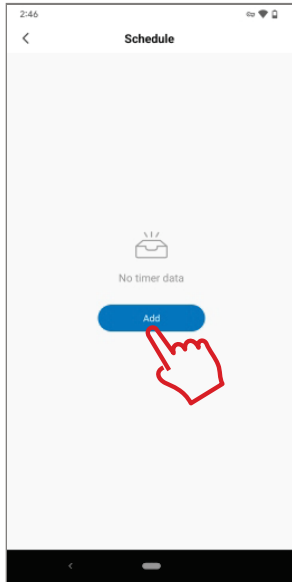
4)



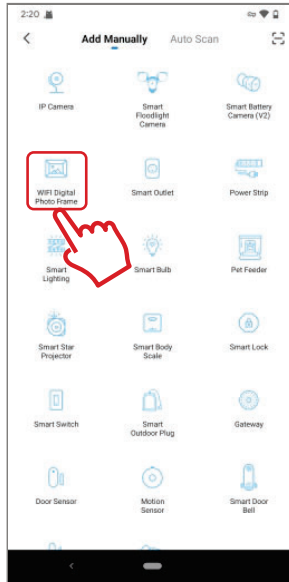
4)

## Step 2 : How to pair your Smart WiFi Frame to the APP

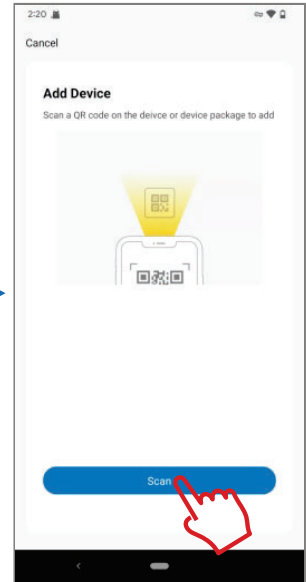
- 1). Log in your "eco4life" app, Press "+" or "Add Device" to add your photo frame.
- 2). Press "WiFi Digital Photo Frame" icon turn to the APP QR code scan page.



1)



2)

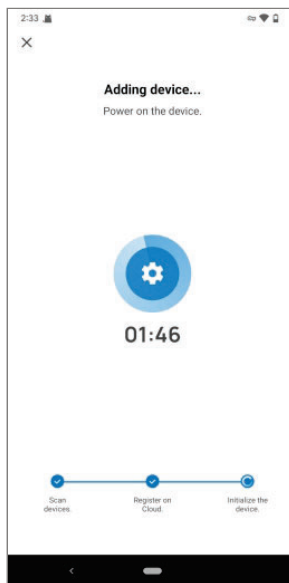


3)

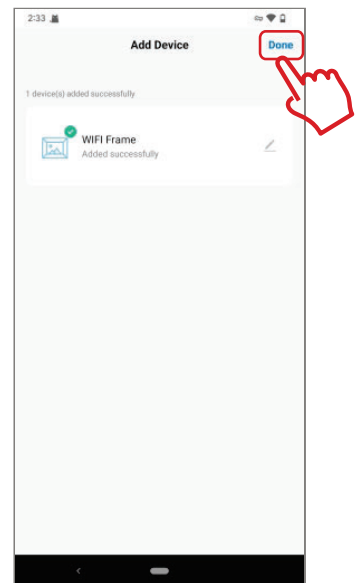
- 3). Click the app "Scan" button to scan the QR code show on the Frame page, and wait for a while.
- 4). Adding device, wait for the connecting.
- 5). Added successfully, press "Done" at the app top right corner to complete the photo frame network pairing.



3)



4)

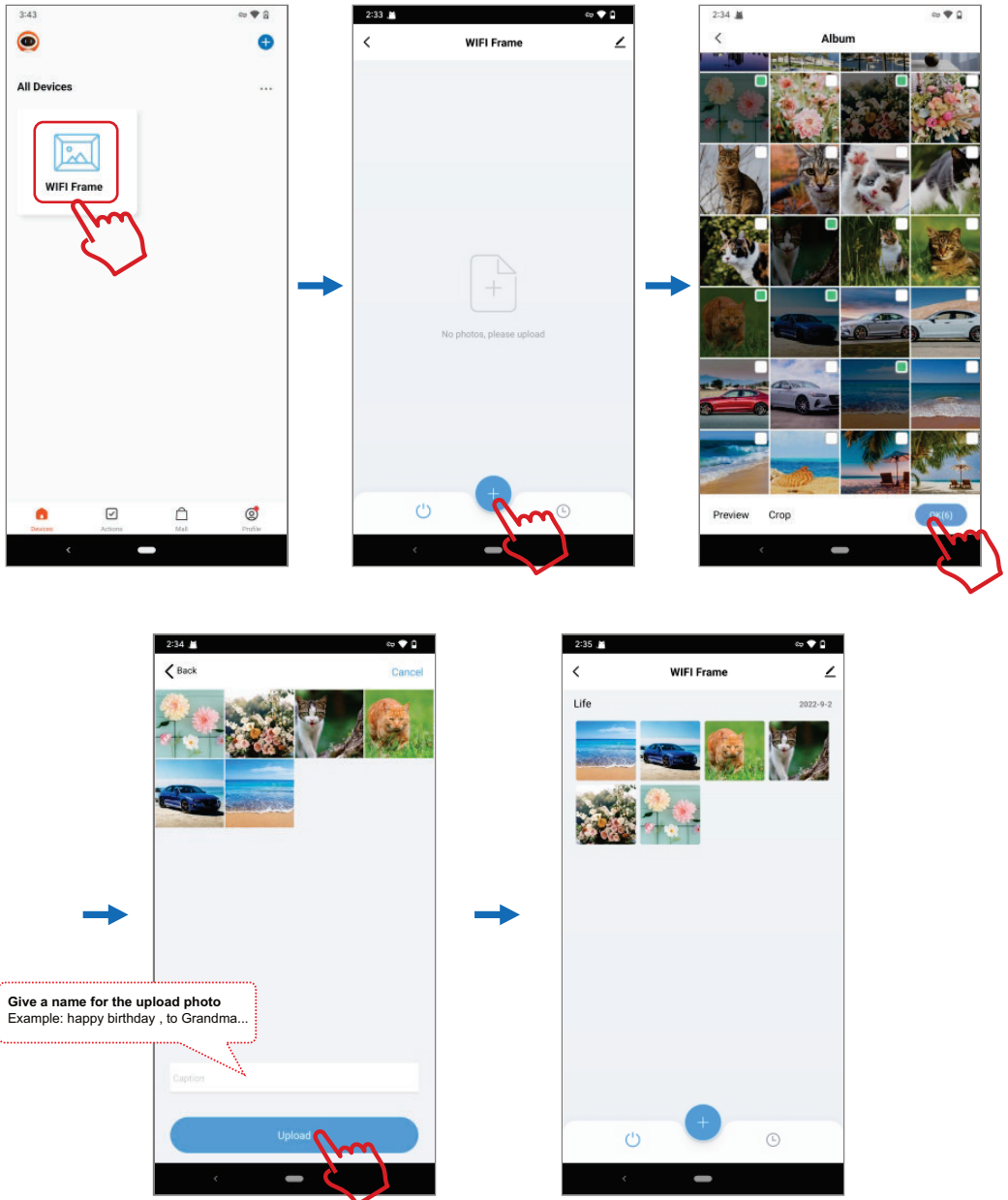


5)

**Congratulations! Your smart wifi frame bind to the app successful.**  
Now enjoy to upload your favorite photos to the frame, share the frame to families!

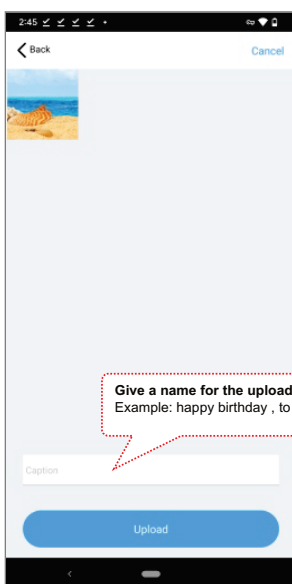
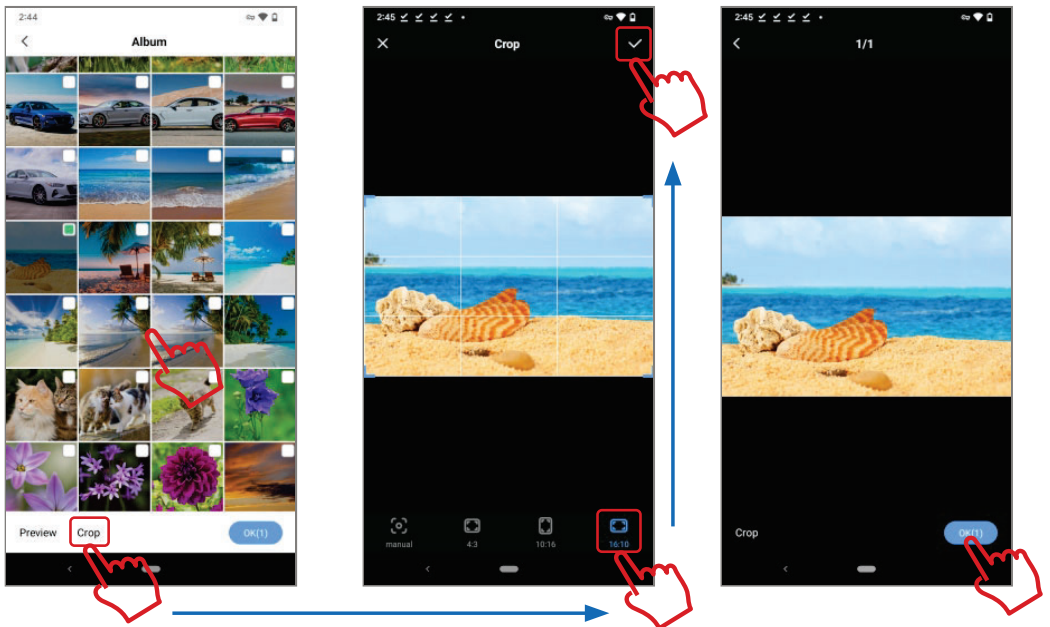
### How to upload the photos/video from the phone

- 1). Open your "eco4life" app and go into the wifi frame page.
- 2). Click "+" button select the photos (video) from your phone. (note: 9photos one time upload max)



## How to crop the photos to fit the frame full screen (recommend)

- 1). Choose photos and click "crop".
- 2). Recommend the "16:10" crop the photo (frame full display ratio is 16:10), adjust the photo show area and size.
- 3). Save the photo after your crop edit
- 4). Press "OK" upload the cropped photo to your frame



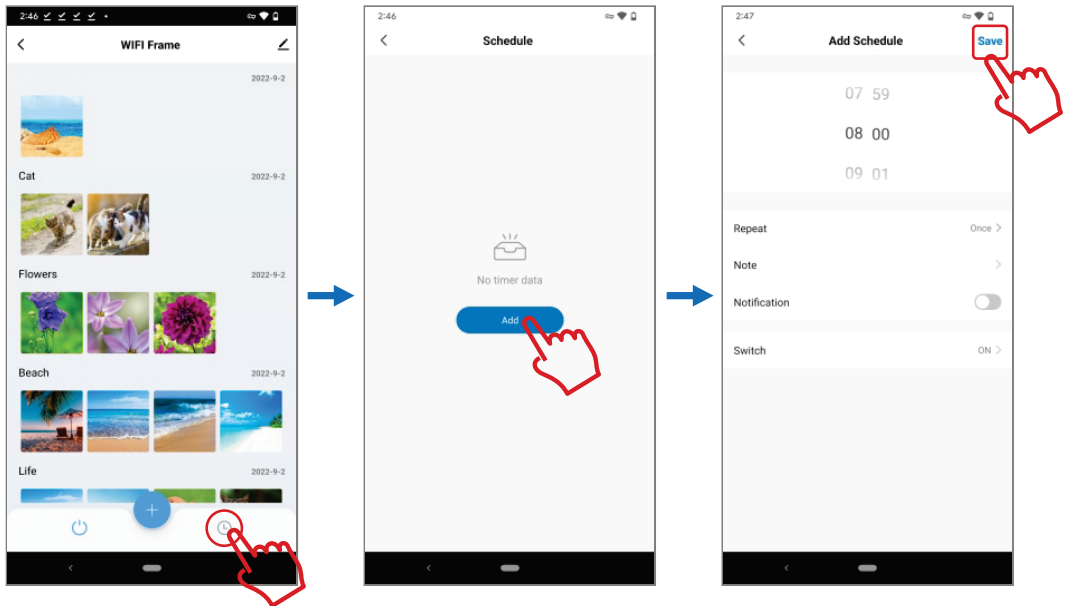
### Tips:

1. The eco4life 8inch frame CPF826 with portrait view and landscape view depend on your photo to select 16:10 or 10:16 crop.
2. The eco4life 10inch frame CPF1026 only landscape view, recommend you select 16:10 crop.
3. The maximum photos upload: 9 photos one time.
4. If the multiple photos crop, once you finish the first photo crop, save it and slide (right to left) to next photo.

## How to set up auto power on/off the frame

- 1). WiFi photo frame page, click the ⌚ button, go into the schedule page.
- 2). Press "Add" to create your frame power on/off schedule and save it .

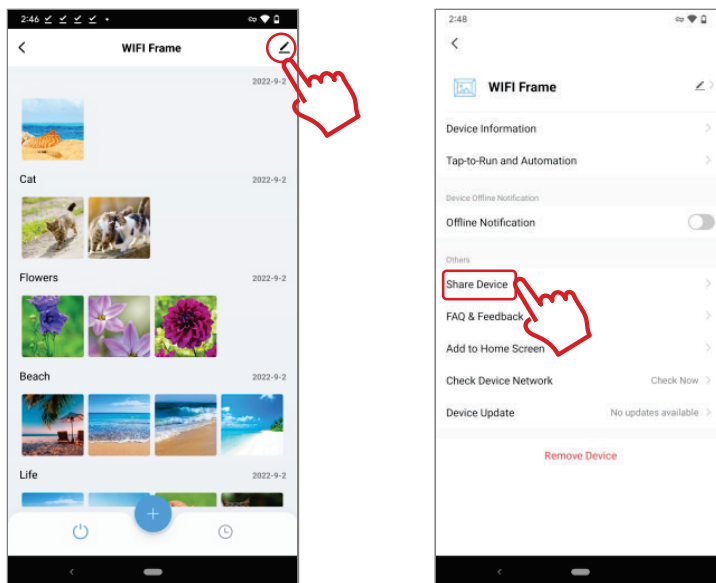
**Note:** Only one scheduled On/Off time is working. Do not set up more than one scheduled On/Off time.



## How to share your frame to families

**Note:** the shared account has to be the eco4life app account. Download eco4life app and sign up the new account.

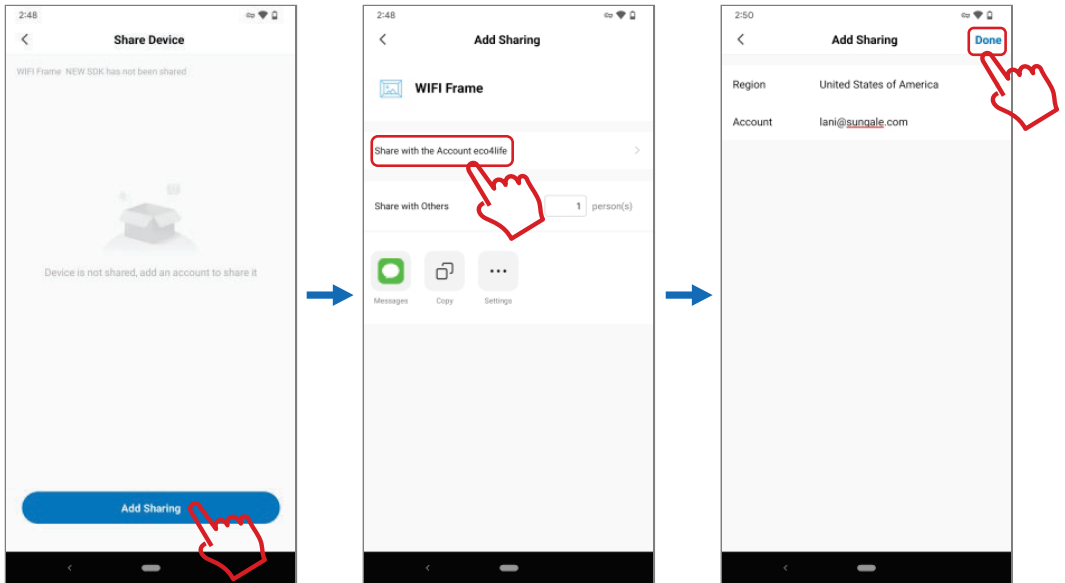
1. Open your "eco4life" app, into the "WiFi Frame" page, Click the ⌵ icon. Select "Share Device".



## How to share your frame to families

2. Choose "Add Sharing", Input the sharing account whose you want to share the frame.  
Select "Done" to complete the operation

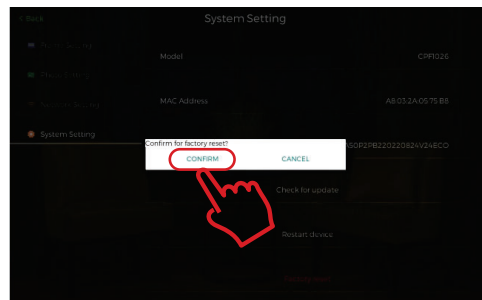
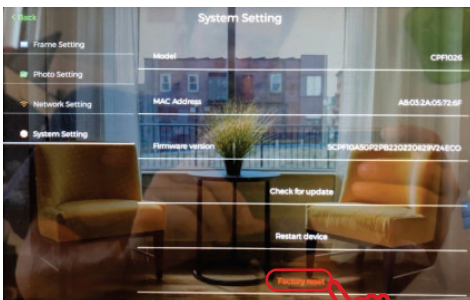
**Note:** He or She will be notified at their Smart App After the frame successfully shared. The WiFi Frame will appear as a shared device at the app home page, the shared account will be allowed to upload photos.



## How to remove a frame from "eco4life" app

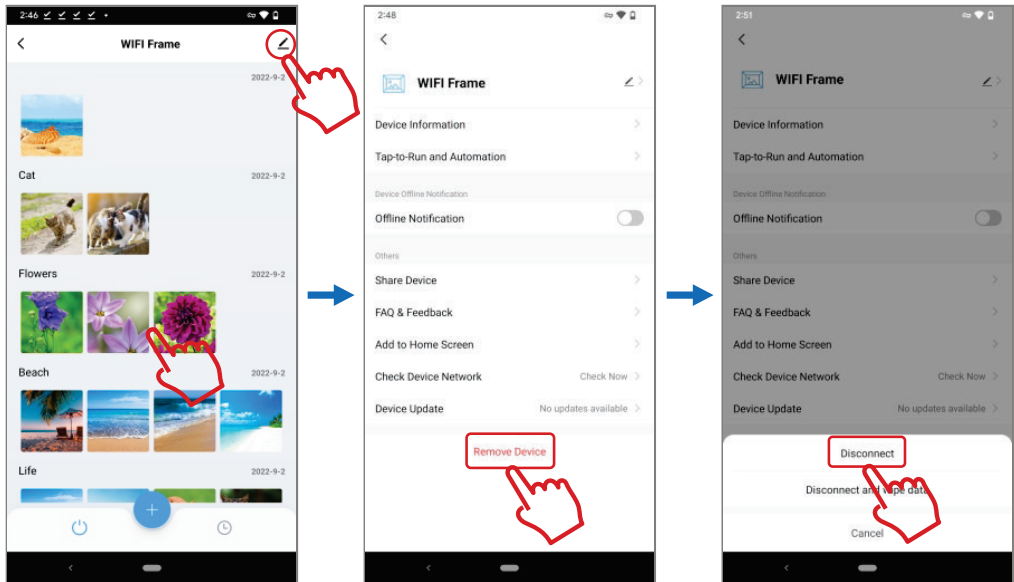
**Note:** if you want remove the account, you need remove from frame and app both.

- 1). Photo frame "Setting", press "system setting".
- 2). Press "Factory reset" and confirm.



## How to remove a frame from "eco4life" app

- 3). Open the wifi frame app, press  icon to open the app "setting" page.
- 4). Press "Remove Device" and "Disconnect".



## Radio and TV Interference Statement

**WARNING!!!** This equipment has been tested and found to comply with the limits of a Class B digital device, pursuant to part 15 of the FCC rules. These limits are designed to provide reasonable protection against harmful interference in a residential installation.

## Support

For more troubleshooting help, please visit [www.eco4lifehome.com](http://www.eco4lifehome.com) FAQ or send us an email at [cs@sonicgracehome.com](mailto:cs@sonicgracehome.com)