



## Smart WiFi Outdoor Security Camera



**USER MANUAL**  
Model# SC-BIPC-1001

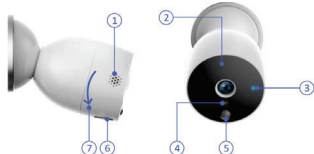
Thank you for purchasing the Smart WiFi Outdoor Security Camera. We are excited in being a part of making your life easier, safer and bringing peace of mind into your homes.

### What's in the package?

- \* 1 Camera
- \* 1 User Manual
- \* 2 Screws
- \* 2 plastic Housing

### Let's Get Started!

(please refer to the numbered Parts Guide below)



1. **Speaker**
2. **Microphone**
3. **Indicator Light:**
  - Quick Flashing Red Light:** Smart configuration mode
  - Slow Blinking Red Light:** AP mode, awaiting WiFi
  - Flashing Red and Green Light:** Failed to connect network
  - Quick Flashing Green Light:** Connecting to WiFi
  - Solid Green Light:** Operating mode
  - Slow Blinking Green Light:** Internet connecting and binding
  - Solid Red Light:** Camera Network is abnormal
  - Solid Orange Light:** Updating Firmware
  - Light is off:** Power saving mode

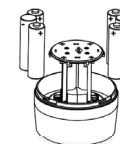
4. **Light Sensor**
5. **Motion Sensor**
6. **Micro USB Port:** To power the camera via USB
7. **Alkaline Battery Box:** Turn this part counter clockwise to insert the alkaline batteries
8. **Camera Base:** The Package comes with 2 screws for wall mounting.
9. **SD Slot**
10. **Reset Button**

### WiFi Requirement

The smart home device only supports 2.4Ghz frequency. If your router supports both the 2.4Ghz and 5Ghz frequency, the 5G network is usually labeled as "Router-5G" so please connect to the other one.

### Install Alkaline Batteries into your Camera

1. Open the camera back cover.
2. Install the 6 pcs alkaline batteries into your Camera. Position the negative pole in between the 2 positive poles of the alkaline batteries. Follow this position on both opposite ends of the battery box.



Make sure you have the right positioning of the battery according to the correct polarity as instructed.

### Choose a good spot for your camera

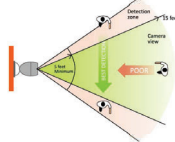
Mount and position your Security Camera in a location with a clear, unblocked field of view and good WiFi signal from the wireless router

Position your camera to optimize its field of view with your Security Camera. In the following images, the green areas show your camera's field of view, both horizontally and vertically.



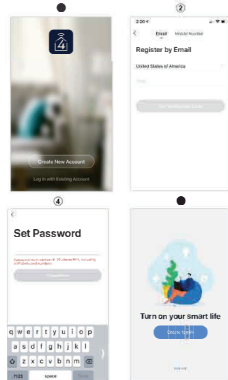
Mount your camera on an elevation of at least 7 feet above the floor or ground area. Tilt and aim it slightly downwards for best motion sensor performance.

Motion Sensor on the Security Camera is more sensitive to a side-by-side movement across its field-of-view than direct movements to and from the camera. Motion detection is at best from 5ft-15ft from the cameras position.



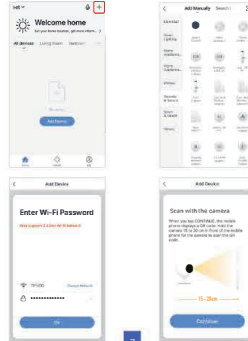
### Register APP

1. Open the eco4life App.
2. Click "Create a new account"
3. Select the country and enter email. Click to get the verification code.
4. Enter the received verification code for verification.
5. Set up login password and login successfully.

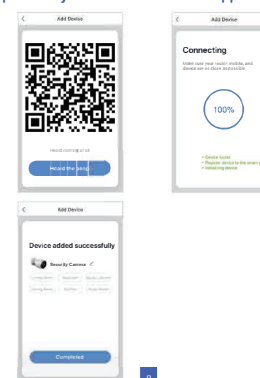


### Setup Security Camera with eco4life App

Open the eco4life app. Click "add device", enter WiFi password and confirm, connecting till "device added successfully."



### Setup Security Camera with eco4life App



### Warranty

eco4life warrants this product against defect in material or workmanship for 1 YEAR from the date of purchase. This warranty becomes invalid if the factory-supplied serial number or "warranty void" sticker has been removed or altered on the product.

This warranty does not cover:

- A) Cosmetic damage or damage due to acts of God
- B) Accident, misuse, abuse, negligence or modification of any part of the product.
- C) Damage due to improper operation or maintenance, connection to improper equipment, or attempted repair by anyone other than Aluratek.
- D) Products sold AS IS or WITH FAULTS.

IN NO EVENT SHALL ALURATEK'S LIABILITY EXCEED THE PRICE PAID FOR THE PRODUCT FROM DIRECT, INDIRECT, SPECIAL, INCIDENTAL, OR CONSEQUENTIAL DAMAGES RESULTING FROM THE USE OF THE PRODUCT, ITS ACCOMPANYING SOFTWARE, OR ITS DOCUMENTATION.

eco4life makes no warranty or representation, expressed, implied, or statutory, with respect to its products, contents or use of this documentation and all accompanying software, and specifically disclaims its quality, performance, merchantability, or fitness for any particular purpose. Aluratek reserves the right to revise or update its product, software or documentation without obligation to notify any individual or entity.

### Technical Support

If you need further assistance, please contact the eco4life support department for troubleshooting prior to returning this device.

E-mail: [cs@sonicgracehome.com](mailto:cs@sonicgracehome.com)  
Web: [www.eco4lifehome.com](http://www.eco4lifehome.com)