

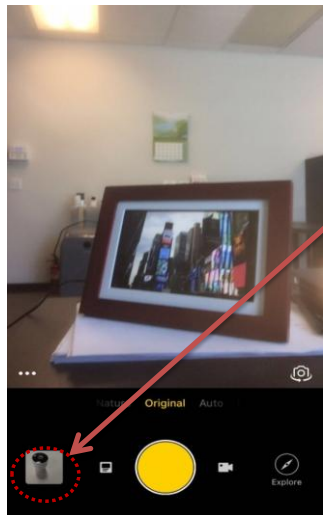
# How to upload your Photos from your phone to the airtake frame

Users app introduce guide

- 1 make sure the airtake frame connected WIFI
- 2 make sure you already login your account on your airtake frame

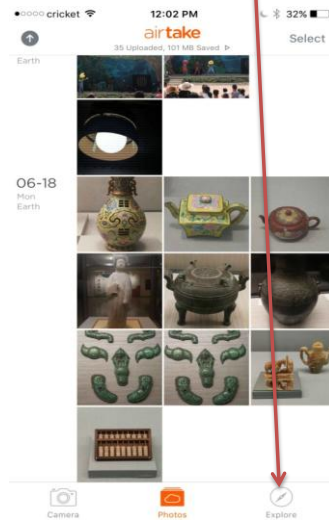
## 1. Need upload the photos from your smart phone to APP cloud (One Time setting)

step 1: open the airtake app

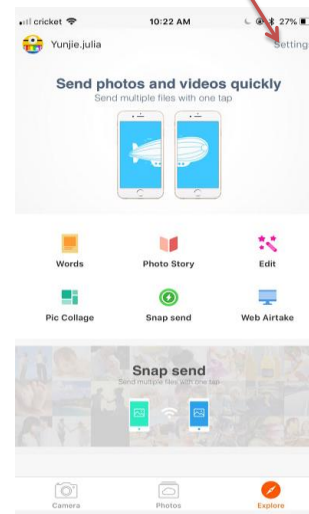


press this icon go to step 2.

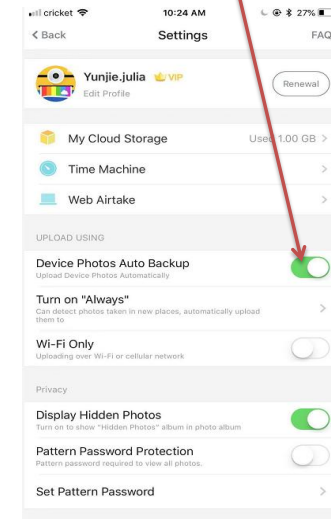
Step 2: press "Explore"



Step 3: press "settings"

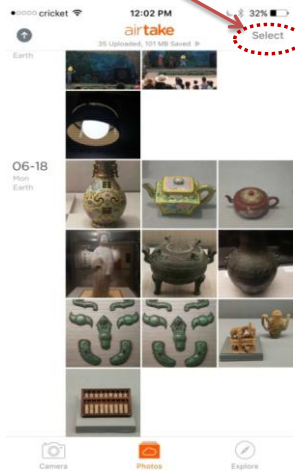


Step 4: turn on "device photos auto backup"  
then go back to the main page  
the photo will upload to your airtake  
cloud account automatically

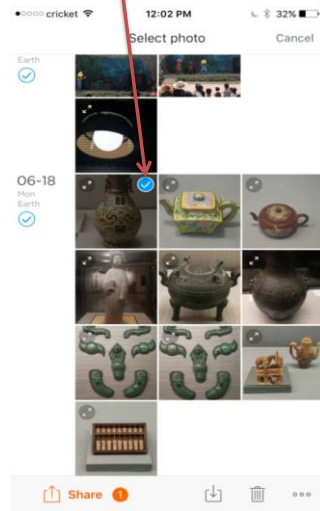


## 2. Transfer the airtake cloud photos to your airtake frame

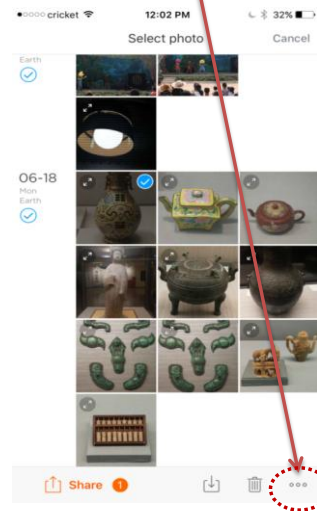
St airtake main page  
press "select"



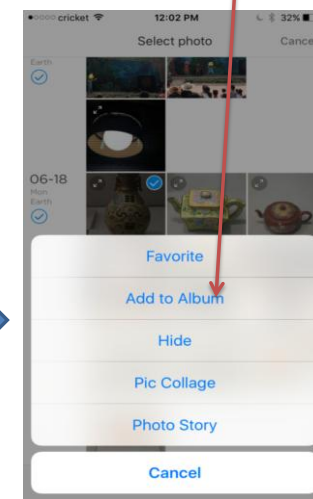
Step2: select photos you want transfer to your airtake frame



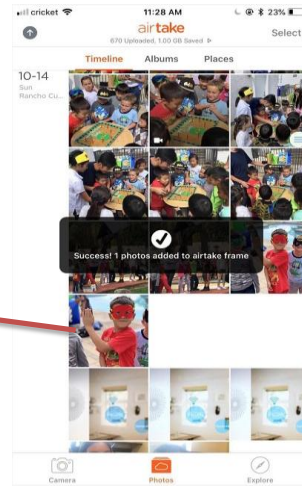
Step 3: press the bellow bottom go to next step



Step 4: press the "add to album"



Successful to transefer the photos transfer to your airtake frame



Step 5: press the "airtake frame"

