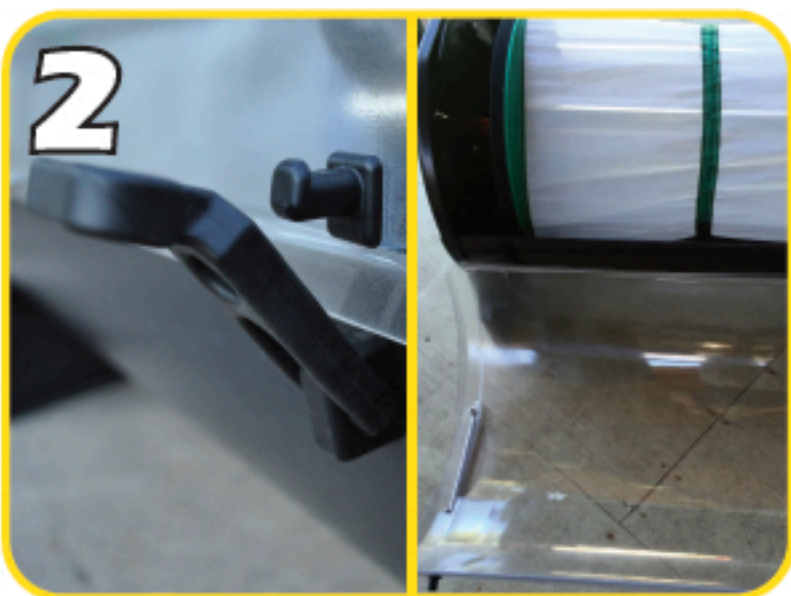




THE ORIGINAL RESINATOR Instruction Manual



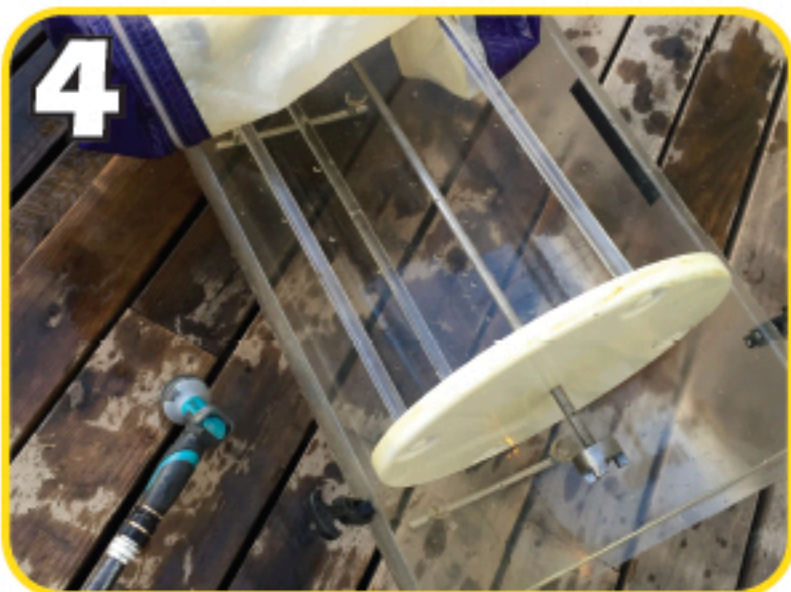
Open Lid by unlatching black rubber fasteners.



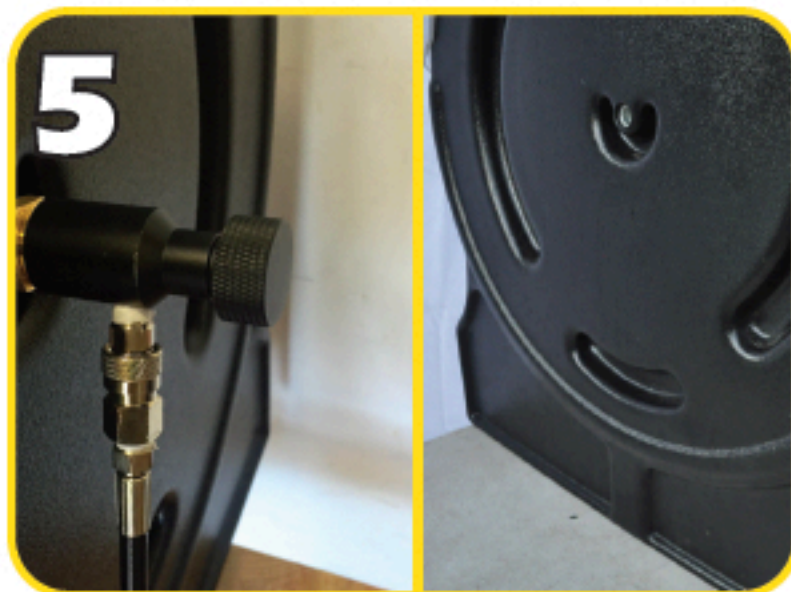
Unlatch two black rubber fasteners for use of hinge system.



Unlatch all four fasteners to remove lid/workstation.



Place lid upside down on handles to function as independent containment free work station



Before removing drum, be sure to detach any hose accessories. (See step 16 on how to insert drum.)



6

To REMOVE drum:
With one hand, lift drum away from motor side first. Then place other hand on alternate side of drum while simultaneously lifting up and away.



7

Before installing screen to drum, clean all surfaces of drum components and Resinator chamber.



8

Place drum screen flat on ground with the rubber side facing up. Then place drum onto drum screen to align edges.



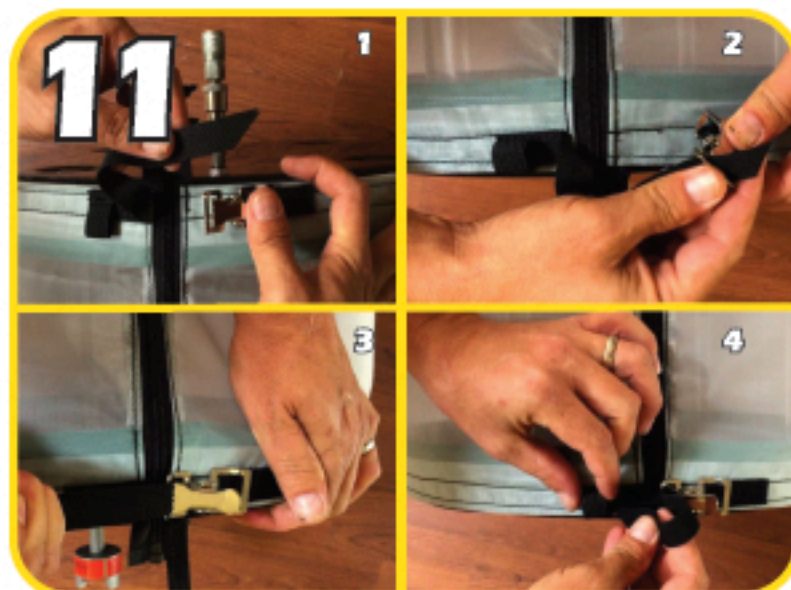
9

Attach screen by carefully wrapping rubber edges of screen flush around drum rim. Connect installation zipper tab to corresponding side.



10

Firmly slide zipper across drum until it stops.

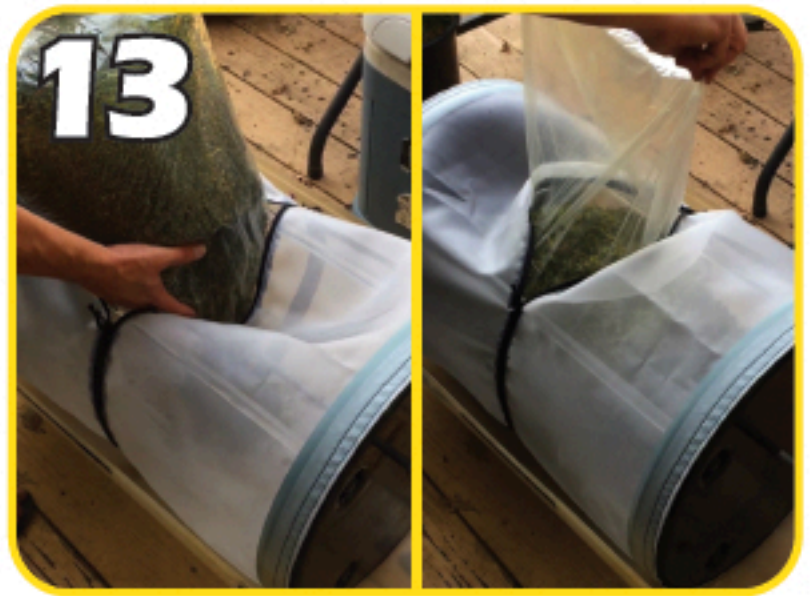


11

1 & 2 -Place nylon strap through metal clip. 3 -Hand tighten by firmly pulling strap to apply tension. 4 -Place loose end of nylon strap into elastic loop. Repeat on alternate side.



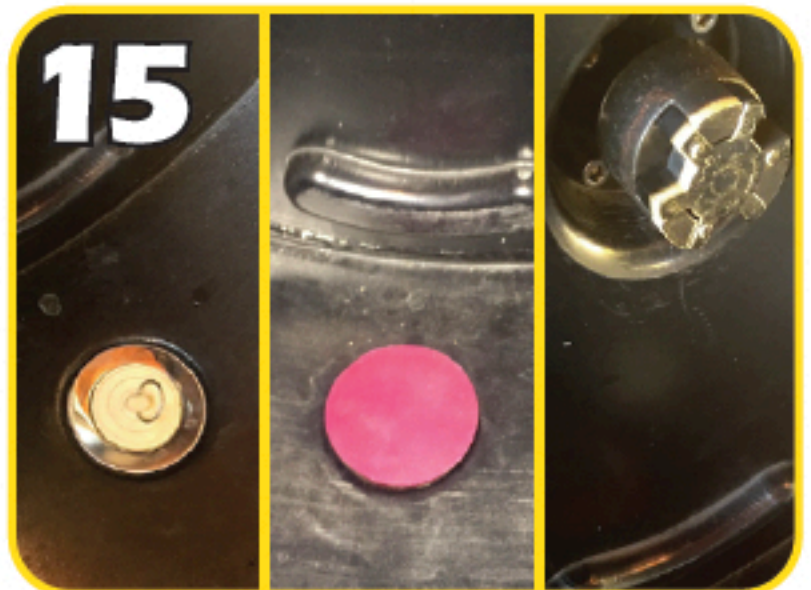
**Weigh/Measure desired amount of material.
(SEE EXTRACTION GUIDE)**



**Load Material by unzipping secondary/loading zipper to open position. Place entire bag into drum cylinder and carefully empty contents into drum while removing bag.
*or use hand scoop to load material**



**Apply agitation (balls, dry-ice, or ice) depending on extraction method, to drum interior with material.
(See extraction guide)
*Remove between loads for reuse.
*Not necessary in wet operation.**



Before inserting drum, wipe clean all surfaces of interior chamber. Place appropriate plugs in chamber bottom drain holes (unless using carbon filter.) Place spider into coupler. *All necessary



**To Insert DRUM: Carefully place jaw couplers together by gliding in toward each other at a slight angle to align coupler teeth.
*Spider must inserted between couplers for operation.**



Gently place rotary/quick release side of drum shaft into receiving groove.



CO2- Attach coil hose by inserting quickcoupler plug (through external side port) into quick coupler body (attached to drum shaft). Screw coil nipple/nut to CO2 tank and tighten. Adhere thermometer to lid & place probe into chamber for temp observation. Use stopwatch to time. (See extraction guide) *Agitation recommended *Use manual regulation of CO2 valve to control pressure/PSI. *Connect bungee cord to one side handle & then under chamber base to connect to alternate side handle (not pictured) to minimize leakage. *Use liquid gas in a well ventilated area.



H2O- Add adequate ice. (Should go in with material.) Fill with water to water line on chamber sides. (Just above lower drum rods.) Use stopwatch for to time. (See extraction guide) *Agitation not necessary *Do not get motor wet or leave outside in rain.



Dry-ice- Add adequate dry-ice. (Should go in with material.) Use stopwatch to time. (See extraction guide) *Agitation recommended. *Use gloves when handling dry-ice.



Close loading zipper by pulling zipper tab toward installation zipper. (zipper is self locking) Double check that straps are fastened securely.



Before installing lid/workstation, wipe clean all interior surfaces of lid area. Place lid on machine.



Once lid is securely in place, latch rubber fasteners. See extraction guide for suggested run times, speeds & load sizes. Once batch is completed, utilize collection toolsto aid in collection process. Clean and repeat.

Check out our Instructional Video online.