



# EVERPURE



## ROM IV REVERSE OSMOSIS SYSTEM

Pentair Everpure® introduces the ROM IV, a reverse osmosis undersink water filtration system. Water is delivered from a 4.5 gallon storage tank.



Third party certified

### FEATURES

Quality water for your drinking and cooking needs

Compact system fits under kitchen sink

Sanitary cartridge replacement is simple, quick, and clean; internal filter parts are never exposed to handling or contamination



Designed for chlorinated or non-chlorinated water supplies

14 gallon per day high recovery reverse osmosis membrane

Most efficient RO technology available on the market today

### SPECIFICATIONS

**Feed Water Pressure**

40-100 psi (2.7 - 6.9 bar)

**Temperature Range**

32-120°F (0-49°C)

**Total Dissolved Solids**

1000 ppm maximum

**Maximum Hardness**

143 ppm

**Sulfide, Iron and Manganese:**

Less than 0.1 ppm

**Chlorine in Water Supply**

Free chlorine - 0.1 ppm maximum

**Water Supply pH Limits**

4 to 11

**Turbidity**

1.0 NTU maximum

### SUBSTANCE REDUCTION

Arsenic V

Barium

Cadmium

Chromium III

Chromium VI

Copper

Cysts\*

Fluoride

Lead

Radium 226/228

Selenium

Total Dissolved Solids

Turbidity

Chlorine Taste & Odor

Dissolved Minerals & Salts

### APPLICATIONS

Point-of-use drinking water

Undersink installations

### SYSTEM INCLUDES

Membrane

Prefilter

Postfilter

Storage Tank

Faucet

\*NSF/ANSI Standard 58 certified to reduce cysts such as *Cryptosporidium* and *Giardia* by mechanical means.

## ORDERING INFORMATION

	MODEL	PART NO.	DESCRIPTION
	ROM IV	EV929650	RO System (w/faucet)
	ROM-G75	EV929775	RO Membrane
ROM-PFK	ROM-PRE	EV929670	Prefilter Cartridge**
	ROM-PST	EV929670	Postfilter Cartridge**

\*\*Prefilter and Postfilter sold together as a twin pack (ROM-PFK)

## INSTALLATION TIPS

Choose a mounting location suitable to support the full weight of the system when operating

The tank assembly may be placed above, below or alongside (preferred) of the assembly

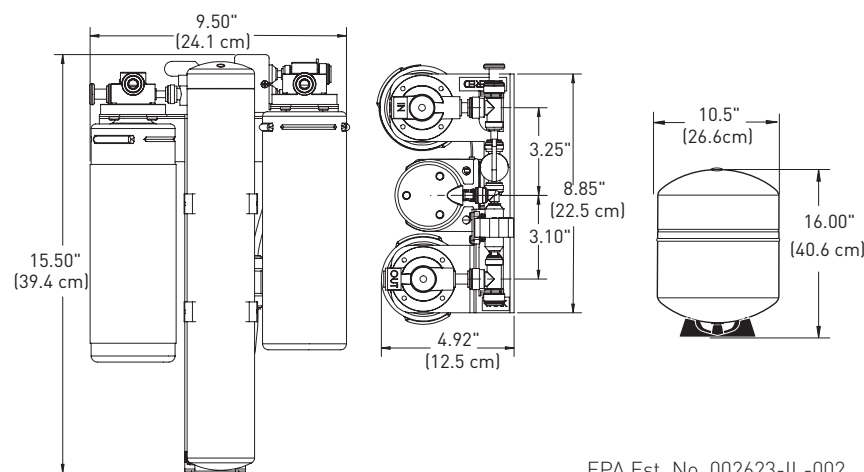
Install vertically with cartridges hanging down

Allow 2-1/2" (6.35 cm) clearance below the cartridge for easy cartridge replacement

The water inlet must supply a minimum of 40-100 psi (2.7-6.9 bar), non-shock

## OPERATION TIPS

Replace the Everpure prefilter and postfilter carbon cartridges every 12 months. Replace the Everpure ROM-G75 RO membrane cartridge every two (2) years, or as needed.



System Tested and Certified by NSF International against NSF/ANSI Standard 58 for the reduction of the claims specified on the performance data sheet or at [www.NSF.org](http://www.NSF.org)

The contaminants or other substances removed or reduced by this drinking water system are not necessarily in your water. Do not use with water that is microbiologically unsafe or of unknown quality without adequate disinfection before or after the system. Systems certified for cyst reduction may be used with disinfected water that may contain filterable cysts.

EPA Est. No. 002623-IL-002

## WARRANTY

Everpure ROM IV System by Pentair (excluding replaceable elements) is covered by a limited warranty against defects in material and workmanship for a period of one year after the date of purchase.

Everpure replaceable elements by Pentair (filter cartridges and water treatment cartridges) are covered by a limited warranty against defects in material and workmanship for a period of one year after date of purchase. See printed warranty for details. Pentair will provide a copy of the warranty upon request.



13845 BISHOPS DR., SUITE 200, BROOKFIELD, WI 53005 USA

P: 262.238.4400 | [WWW.EVERPURE.COM](http://WWW.EVERPURE.COM)

CUSTOMER CARE: 800.279.9404 | [tech-support@pentair.com](mailto:tech-support@pentair.com)

© 2018 Pentair Residential Filtration, LLC. All rights reserved.

§For a detailed list of where Pentair trademarks are registered, please visit [waterpurification.pentair.com/brands](http://waterpurification.pentair.com/brands).

Pentair trademarks and logos are owned by Pentair plc or its affiliates. Third party registered and unregistered trademarks and logos are the property of their respective owners.

4005000 REV E JE18