



# Installation and Operation Guide

## Drinking Water Systems

Thank you for purchasing an Everpure commercial-grade water filtration system for your home. With your Everpure system, you get premium quality water direct from your tap that's great-tasting, healthful and convenient for you and your family.

### Specifications:

For Cold Water Use Only

Temperature: 35-100°F (2-38°C)

Min.-Max. Working Pressure: 10-125 psi (0.7-8.6 bar)

Service Flow Rate: 0.5 gpm (1.9 Lpm)

**H 1200 customers:** Instructions for installing the H-1200 begin on page 4 of this Installation and Operation Guide.

**MULTIPLE APPLIANCE CONNECTIONS:** You can also connect your Everpure Filter to several water using appliances, such as the refrigerator for ice and water, an instant hot dispenser or chiller, or a plumbed-in coffee brewer. Install connection "tees" (available from any hardware / plumbing supply) in the water line between the filter and the faucet adaptor, and run new tubing to each appliance.

We do NOT recommend connecting the filtered water to a commercial ice maker, since these appliances require flow and volume beyond the design limits of your under-sink filter system.

## BASIC INSTALLATION INSTRUCTIONS

### TOOLS NEEDED FOR INSTALLATION

- Phillips Screwdriver
- Wrench
- Utility Knife
- Measuring Tape
- Pencil

### 1. Open Carton & Inspect Parts

#### Installation Parts

Key	Description	Part No.
1	QL3 Filter Head	EV9258-01
2	Filter Cartridge	(varies)
3	2 Screws w/ Locking Washers	EVxxxx-xx
4	Angle Stop Valve Adaptor	EV3121-20
5	Tubing, 1/4" poly	A08601-19
6	Elbow Fitting Pack Restrictor	EV3081-68
7	Teflon® Tape	EV3121-19
8	Faucet Connector	EV3121-35
9	Everpure Filter Timer	EV9075-70



The Owner's Guide Is Applicable For The Following Everpure Filter Models:

#### Model H-54

Rated Capacity:  
750 Gallons (2835 Liters)\*

#### Model H-300

Rated Capacity:  
300 Gallons (1140 Liters)\*

#### Model H-300+M

Rated Capacity:  
500 Gallons (1892 Liters)\*

#### Model H-104

Rated Capacity:  
1,000 Gallons (3780 Liters)\*

#### Model H-300-HSD

Rated Capacity:  
300 Gallons (1140 Liters)\*

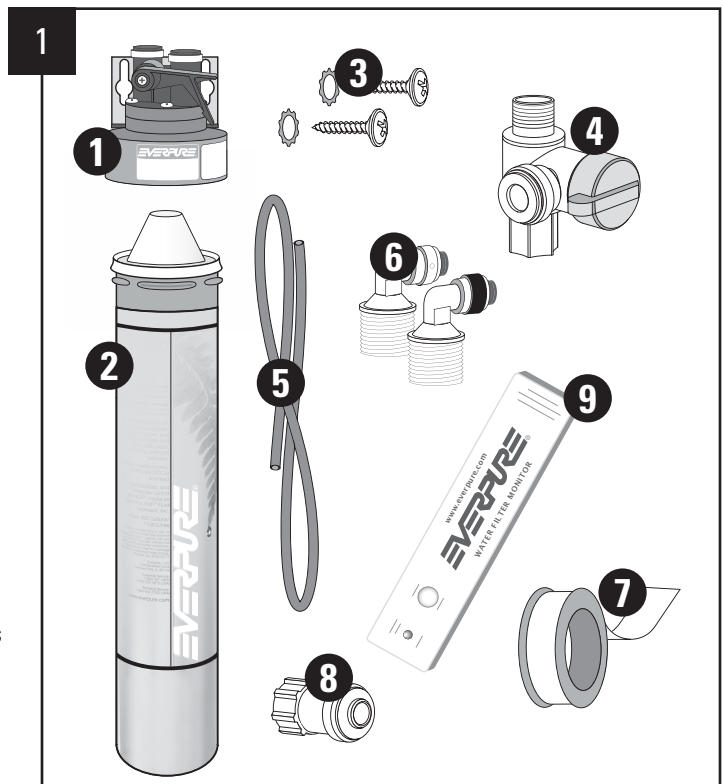
#### Model H-1200

Rated Capacity:  
1,000 Gallons (3780 Liters)\*

\*For optimum performance, cartridge replacement is required once a year, or sooner if flow becomes too slow for convenience, or if the unit's rated capacity is reached.

**⚠ WARNING** The Universal Plumbing Code adopted by over 20 states, and other specific state and county codes prohibit the use of saddle valves and their use is never recommended. You must adhere to your state / local plumbing codes. Consult your licensed plumber if you have related questions.

**⚠ WARNING** Do NOT use copper tubing with the John Guest Fittings provided with your Everpure Filter System. Copper tubing may appear to fit, but water leaks will develop over time and use. If copper tubing is required, you must use copper compression fittings available from any hardware/plumbing supply.



## 2. Verify Under-Sink Mounting Location

Measure 22" from the base of the cabinet, and mark the mounting location for the top of the filter head. Make sure there is adequate space above the head to open and close the built in shut-off valve and to avoid crimping the water line tubing. Also, make sure your chosen location offers easy access for future cartridge changes.

DIMENSION	Width	Mounting Height	Depth
H-54	5"	15"	5"
H-104	5"	20"	5"
H-300	5"	22"	5"
H-300 +M	5" w/monitor	22"	5"
H-300-HSD	5"	22"	5"

**NOTE:** The head and cartridge must be mounted in the vertical position, with the cartridge hanging down.

## 3. Mount Filter Head Under Sink

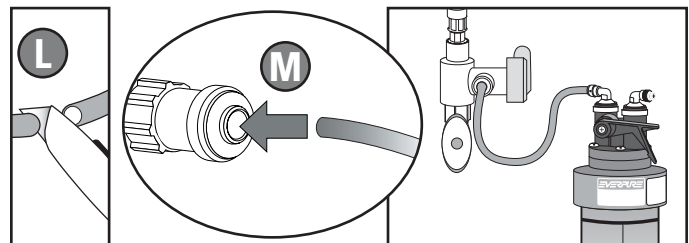
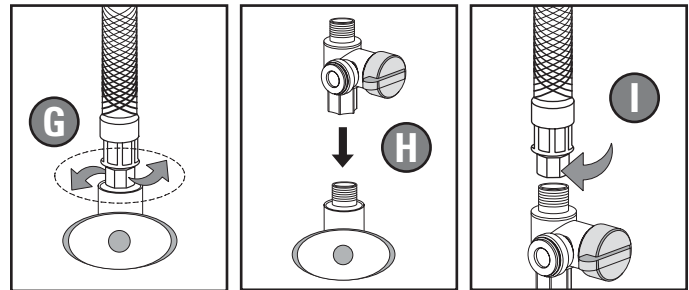
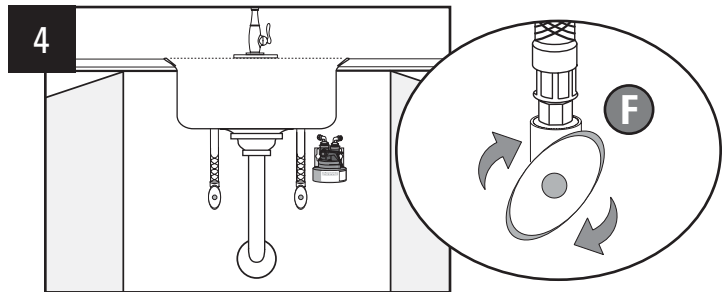
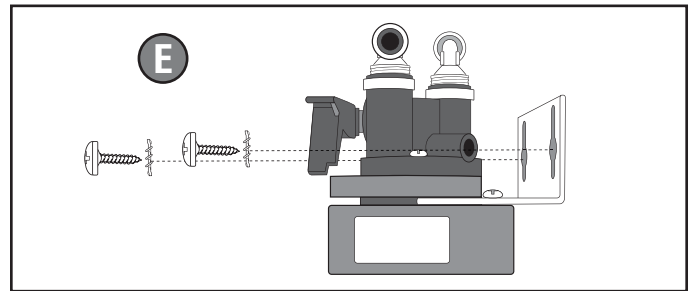
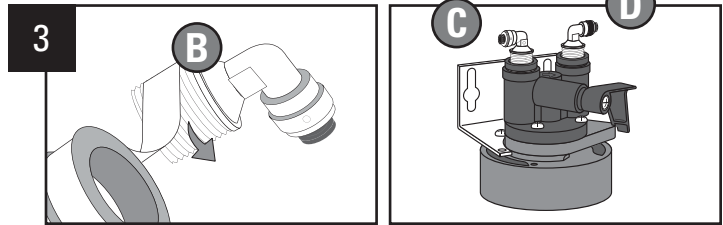
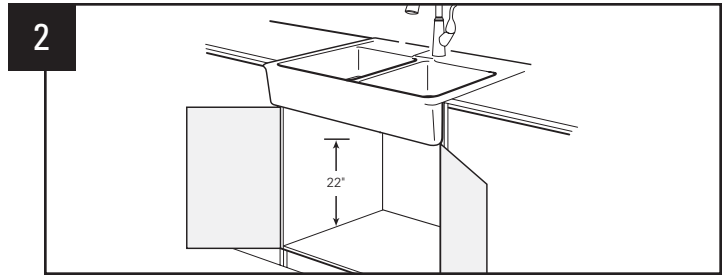
- Identify Filter Head and the two Elbow Fittings, and note that the Outlet Fitting has a black band. This fitting includes a small restrictor insert to insure maximum flow at 1/2 gallon per minute.
- Apply Teflon Tape to the threads of each Elbow Fitting. Wrap tape in direction of the threads to assure a tight fit and avoid small leaks.
- Screw Inlet Elbow Fitting into the left side of the filter head, and hand tighten only.
- Screw Outlet Elbow Fitting (black band) into the right side of the filter head in the same manner.
- Securely mount the filter head on the cabinet wall using the enclosed mounting screws and washers.

## 4. ATTACH INLET WATER SUPPLY

- Locate and close the cold water Angle Stop Valve under your kitchen sink. Open cold water faucet to release water pressure.
- Unscrew and disconnect the braided tubing on top of the Angle Stop Valve.
- Attach the bottom of Angle Stop Adaptor to the existing cold water Angle Stop Valve.
- Attach the braided tubing to the top of the Angle Stop Adaptor.
- Close Side Valve on Angle Stop Adaptor and open cold water Angle Stop Valve to return water service to kitchen sink. Check for leaks.

**NOTE:** Teflon® Tape should not be required for these next steps.

- Measure length of tubing needed to connect Angle Stop Adaptor to Inlet Elbow Fitting on Filter Head. Allow adequate tubing to avoid sharp turns.
- Cut tubing at a 90° angle using a sharp knife.
- Insert ends of tubing into quick-connect fittings. Push tube into fitting and gently pull to confirm a tight fit.



## 5. ATTACH FILTERED WATER TO SINK FAUCET

- N. Install separate faucet for filtered drinking water. Follow individual manufacturer's instructions.
- O. Attach Faucet Connector Fitting to bottom end of threads on new faucet assembly. Teflon® Tape should not be required for this step.
- P. Measure length of tubing needed to connect the Outlet Elbow Fitting on Filter Head to the new Faucet Connector Fitting. Allow adequate tubing to avoid sharp turns. Cut and insert each end of the tubing into the fittings.

### OPTIONAL FILTER MONITOR (H300+M Filter System)

A Filter Replacement Monitor (EV3112-01) is included with the H300+M Filter System. It is a small water meter that counts the number of gallons used. This Monitor includes quick-connect fittings, and should be installed on the tubing between the filter system and the faucet connector.

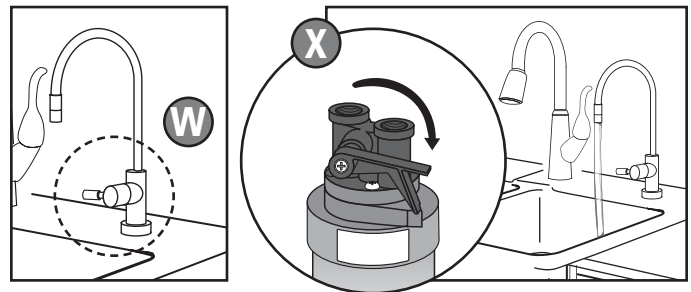
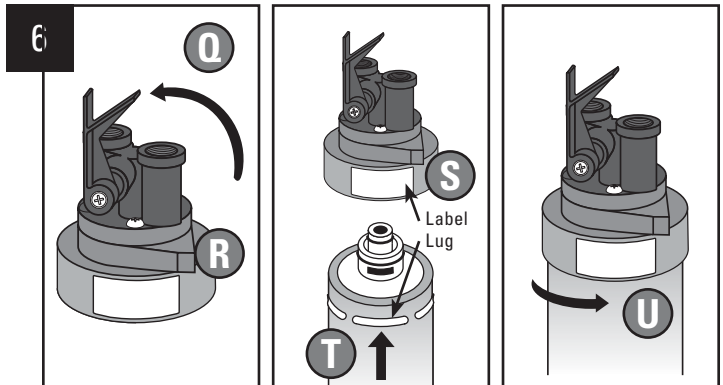
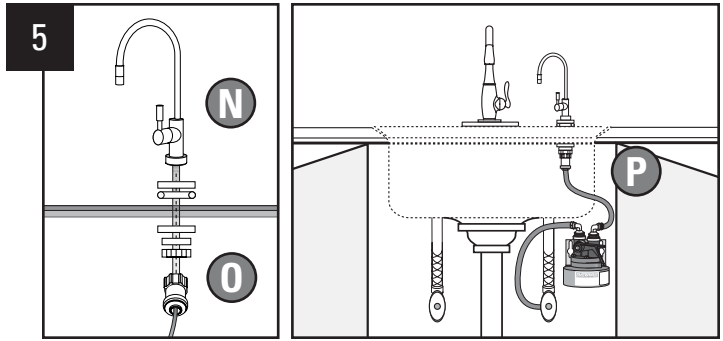
Monitor Instructions (Document EV3112-52) are included with the H 300+M System.

## 6. INSTALL AND FLUSH FILTER CARTRIDGE

- Q. Lift handle of the build-in shut off (QC Valve) on the Head.
- R. Hold Head firmly with one hand.
- S. Align cartridge lug with label on filter Head.
- T. Insert filter Cartridge – Push upwards.
- U. Turn it to the right – About 1/4 turn – Until rotation stops.
- V. Open Side Valve of Angle Stop Adaptor and check for leaks up to Inlet Elbow Fitting.
- W. Open Filtered Water Faucet.
- X. Lower the QC Valve Handle to flush water to the sink.

**NOTE:** Flush new filter cartridges for at least 10 minutes to remove air and any loose carbon. At first the water may appear cloudy due to trapped air in the filter and tubing. If water continues to be cloudy for more that one week, please contact Everpure Technical Services for assistance.

- Y. Remove plastic wrapper and pull Tab from back of Everpure Filter Timer. The LED and buzzer will cycle 3 times to confirm the start, and flash / sound again in 11 months. Remove adhesive backing and mount Timer in a convenient location under the sink.



## H-1200 INSTRUCTIONS

### TOOLS NEEDED FOR INSTALLATION

- Phillips Screwdriver
- Wrench
- Utility Knife
- Measuring Tape
- Pencil

### 1. Open Carton & Inspect Parts

#### Installation Parts

Key	Description	Part No.
1	QL3 Twin Series Filter Head	EV9XXX-XX
2	Filter Cartridges (Set of 2)	EV9XXX-XX
3	2 Screws w/ Locking Washers	EVXXXX-XX
4	Angle Stop Valve Adaptor	EV3121-20
5	Tubing, 1/4" poly	A0860119
6	Elbow Fitting Pack Restrictor	EV3081-68
7	Teflon® Tape	EV3121-19
8	Faucet Connector	EV3121-35
9	Everpure Filter Timer	EV9075-70
10	Shut Off Valve, 3/8" John Guest x 3/8" FPT	EV3098-60
11	Coupler, 3/8" FPT Stainless	EV3123-50

### 2. Verify Under-sink Mounting Location

Measure 22" from the base of the cabinet, and mark the mounting location for the top of the filter head. Measure 13" for the width required for the H 1200 System with dual cartridges. Make sure there is adequate space above the head to open and close the built in shut-off valve and to avoid crimping the water line tubing. Also, make sure your chosen location offers easy access for future cartridge changes.

DIMENSION	Width	Mounting Height	Depth
H-1200	13"	22"	5"

**NOTE:** The head and cartridge must be mounted in the vertical position, with the cartridge hanging down.

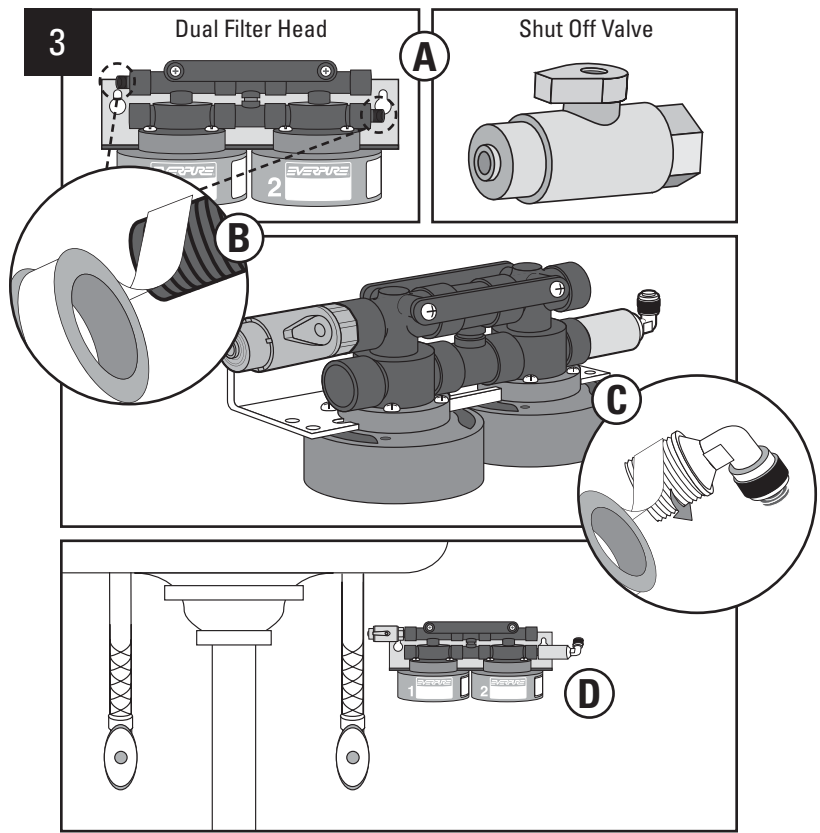
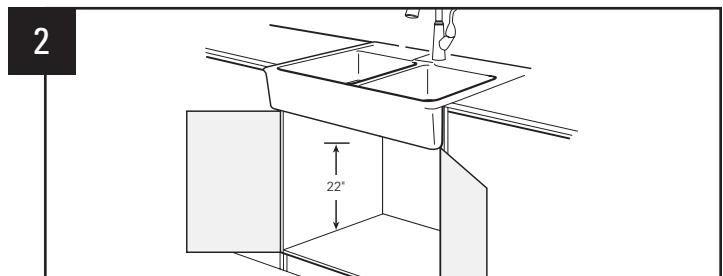
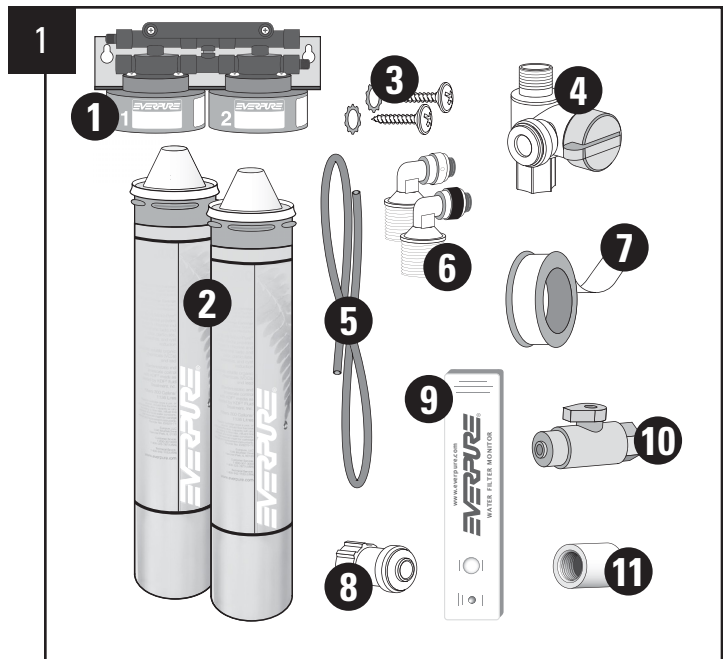
### 3. Mount Filter Head Under Sink

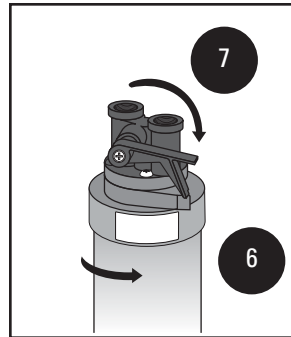
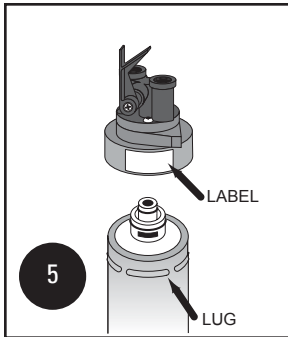
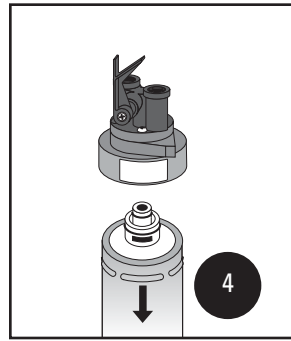
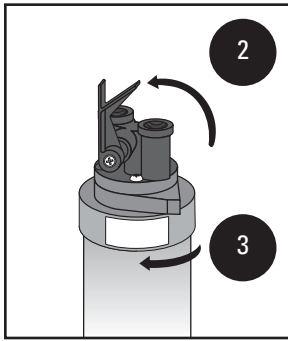
- Identify Dual Filter Head and Shut Off Valve (EV3098-60).
- Apply Teflon Tape to the threads on the inlet (left) side of the Head. Screw on the new Shut Off Valve and hand tighten. Repeat for the Stainless Coupler (EV3123-50) for the outlet (right) side of the Head.
- Apply Teflon Tape to the threads of the Outlet Elbow Fitting (black band). Screw into the outlet of the Stainless Coupler.

**NOTE:** Always wrap tape in direction of the threads to assure a tight fit and avoid small leaks.

- Securely mount the filter head on the cabinet wall using the enclosed mounting screws and washers.

### 4. Go to page 2 and follow *Basic Installation Instructions, Steps 4, 5, and 6*, to complete the H-1200 System installation.





### Cartridge Change instructions

1. Shut off water and relieve line pressure.
2. For heads with built-in shut-off valve, fully lift handle until it stops.
3. Hold head firmly. Push upward on cartridge and turn it to left 1/4 turn, until rotation stops.
4. Pull cartridge down and out of head.
5. Align new cartridge lug with head label. Hold head firmly. Insert new cartridge into head.
6. Turn cartridge to right ¼ turn until rotation stops.
7. Turn on water supply. For heads with built-in valve, lower handle.
8. NOW FLUSH CARTRIDGE! Follow start up procedure.

#### START UP PROCEDURE

Run water through separate filter faucet for three minutes to flush cartridge and purge air in the lines.

NOTE: Dispensed water may appear cloudy at first. This is due to trapped air in the filter cartridge and does not affect the filter system's performance or contaminant reduction in any way. The air will eventually be purged with use. If water continues to be cloudy for more than 1 week, please contact Everpure Technical Service for assistance.

### Series head configurations – H-1200

The Universal Plumbing Code adopted by over 20 states, and other specific state codes prohibit the use of saddle valves and their use is not permissible. You must adhere to your state plumbing codes. Consult your licensed plumber for installation.

### Installation instructions for H-300+M with a Filter Replacement Monitor

The monitor is installed after the filter, but before the connections to faucets, icemakers or other water using devices. The monitor comes with John Guest quick disconnect fittings for easy installation.

1. Connect the tubing from the Everpure head to the inlet (left side) port of the monitor.
2. Connect the tubing from the faucet or other device to the outlet (right side) port of the monitor.
3. Tug gently on both tubes to verify secure connections. When pressurizing system inspect the monitor for any leaks.
4. Use a piece of velcro to secure monitor to a vertical or horizontal surface.
5. To set the monitor to work with your specific system please refer to the instructions supplied with monitor.

Contact your local Everpure distributor for complete monitor instructions (EV3112-52)

**Operation** – Green (Filter still within 90% of capacity); Yellow (90% of filter's capacity has been used, recommend purchasing replacement cartridge); Red (Filter's capacity has been reached or cartridge has been installed for a year; replace cartridge immediately).

You can connect your Everpure system for quality water to several water-using appliances, such as an ice or water refrigerator, an instant hot water dispenser or chiller, and a plumbed-in coffee maker, in addition to the filter faucet. Install tees in the water line coming from the Everpure system to the other appliances. (We do not recommend installation of an Everpure system to an icemaker only, without a filter faucet connection under the sink. If installed to an icemaker only, an activation valve is required.)

The Universal Plumbing Code adopted by over 20 states, and other specific state codes prohibit the use of saddle valves and their use is not permissible. You must adhere to your state plumbing codes. Consult your licensed plumber for installation.



**NSF International Tested and Certified to  
NSF/ANSI 42 & 53**

EVERPURE MODEL NUMBER and REPLACEMENT CARTRIDGES	H-54	H-104	H-300-HSD	H-300	H-300+M	H-1200 1 & 2
Systems Tested and Certified by NSF International against NSF/ANSI Standards 42 and 53 for the reduction of:						
<b>Standard No. 42: Aesthetic Effects</b>						
<i>Chemical Reduction Unit</i>						
Taste & Odor	Yes	Yes	Yes	Yes	Yes	Yes
Chlorine Taste & Odor	Yes	Yes	Yes	Yes	Yes	Yes
Chloramine Taste & Odor	N/A	N/A	N/A	Yes	N/A	Yes
<i>Mechanical Filtration Unit</i>						
Particulate	Class I	Class I	Class I	Class I	Class I	Class I
<b>Standard No. 53: Health Effects</b>						
<i>Chemical Reduction Unit</i>						
Volatile Organic Chemical (VOC)	N/A	N/A	Yes	Yes	Yes	Yes
Lead	Yes	Yes	Yes	Yes	Yes	Yes
MTBE	N/A	N/A	N/A	N/A	N/A	Yes
<i>Mechanical Filtration Unit</i>						
Cyst	Yes	Yes	Yes	Yes	Yes	Yes
Asbestos	Yes	Yes	Yes	Yes	Yes	Yes

Everpure's H-300, H-300+M, H-300HSD and H-1200 filter systems feature KDF® media for bacteriostatic control. \*\* H-54, H-104, H-300, H-300-HSD, H-300+M, and H-1200 systems have the ability to inhibit mineral deposit build-up in coffee makers, ice makers, chillers and instant hot water makers. Following this guide will simplify your system's installation, and once installed, your system will require little maintenance other than periodic cartridge replacement. \*\*KDF® general claims, applicable to the technology for potable water treatment, include bacteria reduction and scale inhibition. KDF® is a registered trademark of Fluid Treatment, Inc.

# LIMITED WARRANTY

You have just purchased one of the finest water treatment units made. As an expression of our confidence in Everpure products, this product is warranted against defects in material and workmanship to the original end-user when installed in accordance with Everpure specifications. The warranty period commences from the date of purchase\*\* and is administered as follows:

**For a period of ONE YEAR**

**Replaceable elements (i.e., filter & water treatment cartridges)\***

**For a period of FIVE YEARS**

**The entire system (excluding replaceable elements)**

**\*This is for material & workmanship, not filter or water treatment cartridge life.**

**\*\* PROOF OF PURCHASE REQUIRED.**

The unit must be used in operating conditions that conform to Everpure's recommended design guidelines. This warranty will not apply if the unit has been modified, repaired or altered by someone not authorized by Everpure.

**If a part described above is found defective within the specified period, you should notify Everpure technical service at the phone number listed below. Any part found defective within the terms of this warranty will be repaired or replaced (at Everpure's discretion) by your local dealer (labor not covered). Any repaired or replaced warranty item will be incorporated under the original warranty terms of the existing system.**

We are not responsible for damage caused by accident, fire, flood, freezing, Act of God, misuse, misapplication, neglect, oxidizing agents (such as chlorine, ozone, chloramines and other related components), alteration, installation or operation contrary to our printed instructions, or by the use of accessories or components which do not meet Everpure's specifications. Refer to the specifications section in the Installation and Operating manual for approved application parameters.

Our product performance specifications are furnished with each water treatment unit. TO THE EXTENT PERMITTED BY LAW, EVERPURE DISCLAIMS ALL IMPLIED WARRANTIES, INCLUDING WITHOUT LIMITATION WARRANTIES OF MERCHANTABILITY AND FITNESS FOR PARTICULAR PURPOSE; TO THE EXTENT REQUIRED BY LAW, ANY SUCH IMPLIED WARRANTIES ARE LIMITED IN DURATION TO THE PERIOD SPECIFIED ABOVE FOR THE ENTIRE WATER TREATMENT UNIT. As a manufacturer, we do not know the characteristics of your water supply or the purpose for which you are purchasing this product. The quality of water supplies may vary seasonally or over a period of time, and your water usage rate may vary as well. Water characteristics can also differ considerably if this product is moved to a new location. For these reasons, we assume no liability for the determination of the proper equipment necessary to meet your requirements, and we do not authorize others to assume such obligations for us. Further, we assume no liability and extend no warranties, express or implied, for the use of this product with a non-potable water source or a water source which does not meet the conditions for use described in the owner's guide or performance data sheet for this product. OUR OBLIGATIONS UNDER THIS WARRANTY ARE LIMITED TO THE REPAIR OR REPLACEMENT (AT EVERPURE'S DISCRETION) OF THE FAILED PARTS OF THE WATER TREATMENT UNIT, AND WE ASSUME NO LIABILITY WHATSOEVER FOR DIRECT, INDIRECT, INCIDENTAL, CONSEQUENTIAL, SPECIAL, GENERAL OR OTHER DAMAGES.

Some states do not allow the exclusion of implied warranties or limitations on how long an implied warranty lasts, so the above limitation may not apply to you. Similarly, some states do not allow the exclusion of incidental or consequential damages, so the above limitation or exclusion may not apply to you. This warranty gives you specific legal rights, and you may also have other rights which vary from state to state. Consult your telephone directory for your local independently operated Everpure dealer, or write Everpure for warranty and service information.