

Grafica's nano-print¹⁰¹⁵

with touch screen controls

A DREAM MACHINE OF EVERY SCREEN PRINTER

NANO-PRINT is a semi-automatic screen printing machine for every screen printer across the globe.

- Print area 10" x 15" (25 x 38 cms)
- Its easy to start and operate
- Single Phase, Plug n play
- No noisy and expensive compressor required

Technical Features

1. Microprocessor with Touch Screen controls
2. High quality electrical and electronic components
3. AC Motor of Class "F" Insulation
4. VFD (Variable Frequency Drive) for precise speed control
5. Imported geared motor (lifetime lubricated)
6. High quality steel fabrication
7. High quality pressure die-cast aluminum parts
8. Hard anodized aluminum extrusions
9. All moving parts hardened for longer life
10. Honey comb vacuum bed with stainless steel top
11. Zero backlash precision micrometer for vacuum bed movement to get accurate registration
12. Compact powerful vacuum blower to hold substrate firmly while printing
13. Squeegee head motion on precision imported guide rails
14. Imported timing belt for squeegee head movement
15. Independent squeegee and flood bar pressure control
16. Aluminum extruded squeegee holder
17. Aluminum extruded flood bar to print consistent halftones thus reduces ink deposition
18. Hard nickel plated metal parts to avoid corrosion
19. Hardened cams and shafts to increase life of machine thus reduces wear and tear
20. Foot switch for easy operation
21. Auto mode to bypass foot switch
22. Safety bars to avoid accident
23. High safety standards



nano-print advantages

1. Single phase (plug n play)
2. No expensive air compressor required
3. Reduces manpower
4. Minimum maintenance
5. Minimum settings
6. Quick job changeover, faster production
7. No hidden cost, it's fully featured
8. Lower squeegee rubber cost (8 x 30 mm)
9. Requires less space 2.7' x 2.35' = approx. 6.3 sq. ft.
10. Screen frame holder compatible with aluminum, metal & wooden frames
11. Print with any types of solvent, plastisol and UV inks
12. Minimum investment, faster returns
13. Electrical consumption (Rs. 5 / Hr / Mumbai) = Rs. 40/Shift = Cheaper then helpers salary
14. Non stop speed 1550/per hour



Optional: Utility Stand with Castor Wheels & Foundation Bolts

What's inside NANO-PRINT

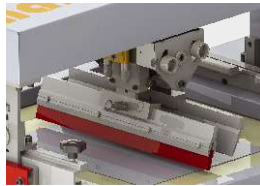
- AC Motor with Class "F" Insulation
- AC frequency inverter, sensor less vector control drive for precise speed control
- Imported geared motor pre-lubricated with zero backlash hardened gears
- High quality aluminum casting parts, to avoid blow holes and air bubbles
- Wire cut cams for very high accuracy
- Hardened steel used for all cams



- All moving parts fully hardened for longer life
- High quality CRC sheet metal parts
- Squeegee head movement on precision guide rails
- Hard anodized aluminum extrusions
- Honey comb vacuum bed increases strength
- Stainless steel vacuum bed for high scratch resistant
- Micro meter for vacuum bed (+/- 0.01 mm)
- Imported timing belt with steel wires
- High quality electrical and electronic components



Precision Guide Rail



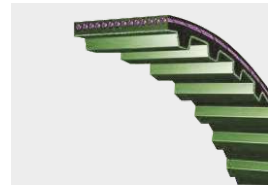
Quick change over of aluminum extruded squeegee and flood bar



High Quality AC Geared Motor



Touch Screen Display



Imported timing belt for squeegee head movement

Technical Data

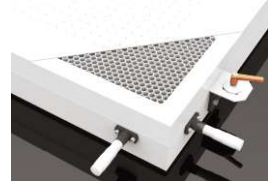
Description	Model: GF-1015 Nano-Print
Max Print Area	10" x 15" Inches (254 x 381 mm)
Vacuum Bed	19.6" x 17.7" (500 x 450 mm)
Vacuum Bed Movement for Registration	± 7 mm
Screen Frame Size (Maximum)	26" x 20" (558.8 x 508 mm)
Screen Frame Size (Manimum)	20" x 12" (508 x 304 mm)
Max Off-Contact	5 mm
Max Substrate Thickness	3 mm (Depends on mesh tension)
Screen Frame Thickness	1.0" ~ 1.5"
Squeegee Holder	17" (431.8 mm)
Flood Coater	19" (482.6 mm)
Power Consumption	220V AC, Single Phase, 2 Amps, 50 Hz 0.6 HP (0.45 kW)
Dimensions in up position without utility stand	832(L) x 725(W) x 1008(H) mm 2.7'(L) x 2.38'(W) x 3.3'(H) ft
Dimensions in down position without utility stand	832(L) x 725(W) x 787(H) mm 2.7'(L) x 2.38'(W) x 2.6'(H) ft
Weight without utility stand	131 Kg (265 lb)



Compact Powerful Vacuum Blower



VFD (Variable Frequency Drive) for precise speed control



Sturdy, light weight honey comb vacuum bed with stainless steel top and precision micrometer to get accurate registration



GRAFICA FLEXTRONICA

Plot No. 26, Survey No. 62, Village Waliv, Vasai East,
City: Vasai, Pin: 401208, Maharashtra, India
Mobile: 88794 49765 Email: sales@graficaindia.com
www.grficaindia.com



A Division of Grafica Flextronica

LEARN MORE | EARN MORE:
Educational Workshops & Seminars at DMI

Our Representatives

Note:

- 1) The machine does not include compressor/servo stabilizer.
- 2) To protect machine from excess voltage/current, always use servo stabiliser to get precise and constant power supply.
- 3) Continuous improvement is an ongoing exercise at Grafica Flextronica, hence technical specifications, features, parts, components, illustrations and data are subject to change without notice.