

Figure 33-73. Approximate Dimensions in Inches (mm)

Control Wire Ring/Spade Terminal Block

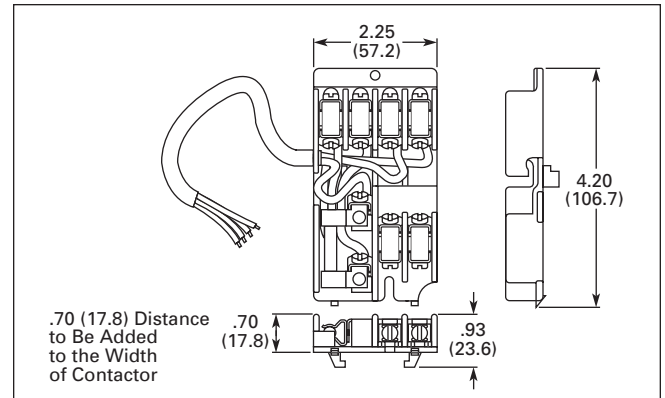
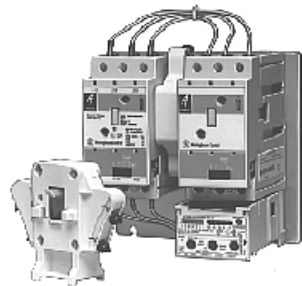


Figure 33-74. Approximate Dimensions in Inches (mm)

Mechanical Interlock Kits



Installed Mechanical Interlock Kit

- Prevents closing of one contactor of a reversing or multi-speed controller until the opposite contactor is completely open.
- Lever type mechanism assures positive action.
- Electrical interlocking contacts included — two NC contacts.

Note: These kits cannot be field installed on reversing starters.

Table 33-331. Mechanical Interlock Kits

Orientation	NEMA Size	Catalog Number	Price U.S. \$
Horizontal	1 – 6	WM16H	
Vertical	1, 2	WM12V	
	3, 4	WM34V	
	5	WM55V	
	6	WM66V	
Vertical	1 or 2 to 3 or 4	WM23VR ①	
	3 or 4 to 5 or 6	WM45VR ②	
	5, 6	WMBBV ③	

① Used to interlock a Size 1 or 2 to a Size 3 or 4 — mounts on right only.
 ② Used to interlock a Size 3 or 4 to a Size 5 or 6 — mounts on right only.
 ③ Interconnecting bus bars are furnished with the interlock.

- For use with all Sizes 1 – 6.
- Provisions for ring or spade type lugs or stripped conductors.
- Bottom side pre-wired with color coded conductors.
- Side mounting on contactor identical to Type W auxiliary contact module mounting or can be mounted on Type W auxiliary contacts.
- Kit contains fuses for use with all size starters.

Table 33-332. Control Wire Terminal Block

Description	Catalog Number	Price U.S. \$
Control Wire Terminal Block	WTBF16	