

Circuit Breaker Enclosures NEMA Type 3R

Section 7

- Suitable for use as service equipment (SE) as noted.
- 60°C/75°C conductor ratings
- Short circuit ratings are equal to the rating of the installed breaker.



To order enclosed or accessorized circuit breakers, a configurator is available at: www.geelitenet.com (EliteNet)

Type 3R, Outdoor, Raintight

NEMA Type 3R

Max. Ampere Rating	Frame Type	No. of Poles	Certifications				Product Number ¹⁰	For 3P4W Enclosures Neutral Product Number	For Enclosures with Ground Fault Protection	
			UL SE	cUL	cUL SE ¹	CSA			Neutral Product Number ²	Neutral Sensor for Ground Fault
70	THQL, TXQL, THQL-GF	1, 2, 3	•	-	•	•	TQL70R ³	Included	-	-
100	THQL, TXQL, THQL-GF	1, 2, 3	•	-	•	•	TQL100R ³	Included	-	-
125	THQL	2	•	-	•	-	TQL125R	Included	-	-
100	THQC, THHQC, TXQC	1, 2, 3	•	-	•	•	TQC100R ³	Included	-	-
100	SE150, THED, TED, TEB	2, 3	•	-	•	•	TE100R	Included	-	-
150	SE150, THED, TED	2, 3	•	-	•	•	TE150R	Included	-	-
225	TQD, THQD	2	•	-	•	•	TQD225NR ⁹	Included	-	-
225	TQD, THQD	2, 3	•	-	•	•	TQD225R	Included	-	-
250	SF250	2, 3	•	-	-	•	TF225R	TNIA225 ⁴	-	-
250	FE250	2, 3	•	•	-	-	FE250R	TNIA225 ⁴	TNIA250EGF	FEGS0025 FEGS0060 FEGS0125 FEGS0150 FEGS0250
400	TJD, TJJ, TJK, THJK	2, 3	•	-	-	•	TJ400R ⁵	TNIA400	-	-
600	TJK, THJK	2, 3	•	-	-	•	TJ600R	TNIA600	-	-
400	SG400	2, 3	•	-	-	•	SG400R	TNIA400	TNIA400VG	TSRG201 TSRG204
600	SG600	2, 3	•	-	-	•	SG600R	TNIA600	TNIA600VG	TSRG206
600	FG600	2, 3	•	•	-	-	FG600R	TNIA400 TNIA600	TNIA400GGF TNIA600GGF	FEGS0250 FEGS0400 FEGS0600
1200	SK1200	2, 3	•	-	-	•	TK4V1200R ^{6, 7}	TNIA400 TNIA600 TNIA800 TNIA1200 TNIA1200	TNIA800G TNIA1200G	TSKG408 TSKG410 TSKG412

Max. Ampere Rating	Frame Type	No. of Poles	Certifications				Product Number ¹⁰	For 3P4W Enclosures Neutral Product Number	Notes
			UL SE	cUL	cUL SE ¹	CSA			
100	THQL, TXQL, THQL-GF	1, 2, 3	•	-	-	•	TQL70RE ³	Included	100A circuit breaker factory installed (2-pole)
150	TQD, THQD	2	•	-	-	•	TQD150NRE	Included	150A circuit breaker factory installed (2-pole)
200	TQD, THQD	2	•	-	-	•	TQD200NRE	Included	200A circuit breaker factory installed (2-pole)
150	THQMV	2	•	-	-	•	THQMV150NRE ⁸	Included	150A circuit breaker factory installed (2-pole)
200	THQMV	2	•	-	-	•	THQMV200NRE ⁸	Included	200A circuit breaker factory installed (2-pole)

¹ cUL Listed - Suitable for use as service equipment.

² Neutral for ground fault required to mount neutral sensor in enclosure.

³ 3-Pole breakers with an accessory can not be installed in these enclosures.

⁴ For 250A rating, use copper cable only.

⁵ Suitable for parallel 250 kcmil maximum. If larger cable is required, use 600A enclosure.

⁶ Not suitable for 100% rated 1200A SK breakers.

⁷ Suitable for parallel 500 kcmil maximum.

⁸ Service rated equipment only.

⁹ TQD225NR is 2P only and differs in size from TQD225R.

¹⁰ 100-250A devices have removable closing cap. Larger ampere devices require field cut openings. Order hubs separately. See page 7-6.



Universal Raintight Hubs, Aluminum

For outdoor enclosures that have removable closing caps.

Nominal Conduit Diameter (in.)	Standard Package	Product Number
3/4	10	TC75
1	10	TC100
1 1/4	10	TC125
1 1/2	10	TC150
2	10	TC200
2 1/2	10	TC250
3	5	TC300
Closing Cap	10	TCCP



TC150

Stainless Steel Cover

For flush mounted Type 1 circuit breaker enclosures, field installed only.

For Use with	Product Number
TE100F	TE100FSS

Insulated Groundable Neutrals

Max. Ampere Rating	Lug Wire Size (Cu-Al) AWG/kcmil	Standard Package	Product Number
100	14-1/0 Cu, 12-1/0Al	1	TNI100
225	1-300	1	TNIA225 ¹
250	1-300	1	TNIA250EGF ^{1, 3}
400	(2) 1/0-250 or (1) 4-600	1	TNIA400
400	(2) 1/0-250 or (1) 4-600	1	TNIA400VG ²
400	(2) 1/0-250 or (1) 4-600	1	TNIA400GGF ³
600	(2) 2/0-500	1	TNIA600
600	(2) 2/0-500	1	TNIA600VG ²
600	(2) 2/0-500	1	TNIA600GGF ³
800	(3) 250-500	1	TNIA800
800	(3) 250-350 Cu or (3) 250-500 Al	1	TNIA800G ²
1200	(4) 250-350 Cu or (4) 250-500 Al	1	TNIA1200
1200	(4) 250-350 Cu or (4) 250-500 Al	1	TNIA1200G ²
1200	(4) 250-400 Cu Only	1	TNIAC1200

¹For 250A rating, use copper cable only

²Neutral required for Spectra Circuit Breakers with ground fault.

³Neutral required for Record Plus Circuit Breakers with ground fault.

Ground Kits

Ampere Rating	Product Number
70-125 amp	TGL1
150-400 amp	(1) TGL1 plus (1) TGL20
600-1200 amp	TGL6

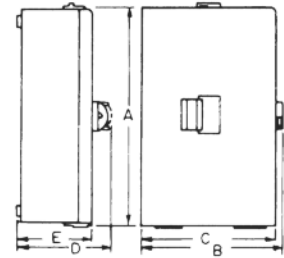


Circuit Breaker Enclosures Dimensions and Outline Drawings

Section 7

NEMA Type 1 Enclosures

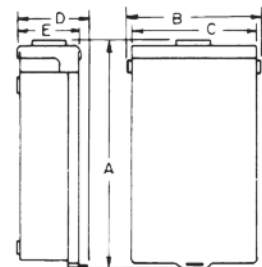
Product Number	Dimension ¹ A (in.)	Dimension ¹ B (in.)	Dimension ¹ C (in.)	Dimension D (in.)	Dimension E (in.)	Outline Drawing No.
TE100F, S, SB ⁴	17	-	7 7/8	5 1/2	4 3/4	208C2891 Sh 3
TE150F, S, SB ⁴	26 7/16	8 7/8	8 7/8	6 3/16	5 1/2	139C5497 Sh 1
SF250F, S, SB ⁴	29 7/8	8 7/8	8 7/8	6 3/16	5 1/2	139C5497 Sh 2
FE250F, S, SB ⁴	26 7/16	8 7/8	8 7/8	6 3/16	5 1/2	139C5497 Sh 9
SG400F	31 3/8	-	15 5/32	7 5/16	6 5/8	208C2891 Sh 1
SG400S, SB ⁴	30 5/16	-	14 1/8	7 5/16	6 5/8	208C2891 Sh 1
TJ400F, S ²	27 7/16	15 7/16	15 7/16	7 1/8	6 7/16	139C5497 Sh 3
SG600F	44	-	18 3/16	9	8 3/8	208C2891 Sh 2
SG600S, SB ⁴	42 3/4	-	17 1/8	9	8 3/8	208C2891 Sh 2
FG600F, S, SB ⁴	42 3/4	-	17 1/8	9	8 3/8	208C2891 Sh 7
TJ600F, S	46 5/8	17 3/16	17 3/16	9 1/16	8 3/8	139C5497 Sh 4
TK4V1200F, S, SB ⁴	48 1/8	21 15/16	21 15/16	9 9/16	8 11/16	139C5497 Sh 5
TQC100F, S	15 1/4	-	6 7/8	4 3/4	4	139C5651 Sh 1
TQD225F, S	26 7/16	8 7/8	8 7/8	6 3/16	5 1/2	139C5497 Sh 1
TQL70F, S	12 7/8	-	5 3/4	4 3/4	4 1/16	208C2817 Sh 1
TQL100F, S	15 1/4	-	6 7/8	4 3/4	4	139C5651 Sh 2
TQL125F, S	16 7/8	-	6 3/4	5 3/16	4 1/2	139C5651 Sh 2



NEMA Type 1
Suffix F (Flush) Suffix S (Surface)

NEMA Type 3R Enclosures

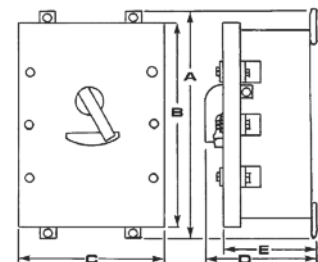
Product Number	Dimension A (in.)	Dimension B (in.)	Dimension C (in.)	Dimension D (in.)	Dimension E (in.)	Outline Drawing No.
TE100R	18 1/8	7 7/8	7 1/2	5 11/16	5 3/8	139C5652 Sh 1
TE150R	27 7/16	10 1/4	10	6 1/4	5 1/2	139C5498 Sh 1
TF225R	30 13/16	10 1/4	10	7	6 1/4	139C5498 Sh 2
FE250R	27 7/16	10 1/4	10	6 1/4	5 1/2	139C5498 Sh 5
SG400R	30 13/16	14 15/16	14 5/8	9 1/8	8	208C2837 Sh 1
SG600R	43	18 7/8	18 1/6	8 13/16	7 11/16	208C2838 Sh 1
FG600R	43	18 7/8	18 1/6	8 13/16	7 11/16	208C2838 Sh 2
TJ400R ²	27 5/16	15 7/8	15 11/16	8 11/16	8	139C5498 Sh 4
TJ600R	46 3/16	18 1/16	18 1/16	8 5/8	7 5/8	139C5519 Sh 1
TK4V1200R	47 3/4	23 3/8	22 9/16	9 7/16	8 5/16	139C5520 Sh 1
TQC100R	15 3/4	7 7/8	7 1/2	5 11/16	5 3/8	139C5652 Sh 1
TQD150NRE	26 13/16	7 13/16	7 5/8	5 1/8	4 7/16	139C5498 Sh 3
TQD200NRE	26 13/16	7 13/16	7 5/8	5 1/8	4 7/16	139C5498 Sh 3
TQD225NR	26 13/16	7 13/16	7 5/8	5 1/8	4 7/16	139C5498 Sh 3
TQD225R	26 3/8	10 1/4	10	6 1/4	5 1/2	139C5498 Sh 1
TQL70R	17	-	6 7/8	5 15/16	5	208C3061 Sh 1
TQL100R, RE	17	7 1/4	6 7/8	6	5	139C5652 Sh 1
TQL125R	18 5/16	7 11/16	7 1/2	6 5/16	5 3/16	139C5652 Sh 1
THQMV150NRE	18 13/16	9 1/2	9 5/16	5 1/2	4 7/8	208C3061 Sh 2
THQMV200NRE	18 13/16	9 1/2	9 5/16	5 1/2	4 7/8	208C3061 Sh 2



NEMA Type 3R Outdoor Enclosure

NEMA Type 4/4X Enclosures

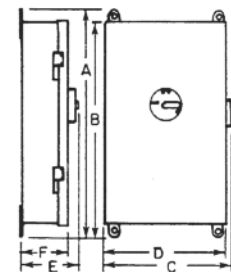
Product Number	Dimension A (in.)	Dimension B (in.)	Dimension C (in.)	Dimension D (in.)	Dimension E (in.)	Outline Drawing No.
SE100CS	19 1/4	18 1/2	8 1/2	7	5	139C5654 Sh 1
TE100CS	19 1/4	17 1/4	8 1/2	7	5	139C5654 Sh 1
SF250CS	36 5/8	34 13/16	9 1/4	7 27/32	5 29/32	168D1626 Sh 1
TJ400CS ²	29 1/4	27 1/2	16 1/4	9 1/16	7 1/8	139C5496 Sh 2
SG400CS ³	32	31 1/4	14 1/8	9 5/16	7 7/16	208C2887 Sh 1
TJ600CS	46 1/4	45 1/2	19 1/8	9 1/16	7 1/8	139C5496 Sh 3



NEMA Type 4/4X Stainless Steel

NEMA Type 12 and 12K Enclosures

Product Number	Dimension A (in.)	Dimension B (in.)	Dimension C (in.)	Dimension D (in.)	Dimension E (in.)	Dimension F (in.)	Outline Drawing No.
SE100J, D	19 1/4	17 7/8	9	5	5 3/4	4 7/8	139C5653 Sh 1
TE100J, D	19 1/4	17 7/8	9	5	5 3/4	4 7/8	139C5653 Sh 1
SF250J	36 1/4	35 3/8	9 13/16	9 3/16	7 9/16	6 1/2	208C2884 Sh 1
SF250J	36 1/4	35 3/8	9 13/16	9 3/16	7 9/16	6 1/2	208C2884 Sh 2
SG400D	31 3/8	30 1/2	16 5/16	15 11/16	7 7/8	6 9/16	208C2885 Sh 1
SG400J	31 3/8	30 1/2	16 5/16	15 11/16	7 7/8	6 9/16	208C2885 Sh 2
TJ400J ²	29 5/16	27 13/16	14 1/4	13 3/16	7 7/8	6 7/16	139C5682 Sh 4
SG600J	44 7/8	44	18	17 3/8	9 9/16	8 3/8	208C2886 Sh 1
TJ600J	48 7/16	46 15/16	17 3/4	17 3/16	9 3/4	8 3/8	139C5682 Sh 5
SK1200J	56 5/16	55 7/16	22 11/16	22	10 7/16	8 11/16	139C5682 Sh 6



NEMA Type 12 and 12K
Suffix D (with KOs) Suffix J (without KOs)

¹Flush front extends approximately 5/8-inch beyond each side.

²Suitable for parallel 250 kcmil maximum. If larger cable is applied, use 600 amp enclosure.

³Not suitable for use with ground fault.

⁴NEMA Type 1 Enclosure Product Numbers ending in "SB" contain blank end walls (No Knockouts).



Circuit Breaker Enclosures Dimensions and Knockout Drawings

Section 7

Symbol	A	⊕	B	C	D	E	F	G	H	I	J	K	L	M	N	P	Q	R	S	T	U	V	W	X	Y	Z	
Conduit Size (Inches)	9/32	—	3/8	—	—	—	—	—	—	3/8	—	—	—	—	—	—	—	—	—	—	—	—	—	—	—	—	
	—	1/2	1/2	1/2	—	1/2	—	1/2	—	1/2	—	—	—	—	—	—	—	—	—	—	—	—	—	—	—	—	
	—	—	3/4	3/4	3/4	3/4	3/4	3/4	3/4	3/4	3/4	—	—	—	—	3/4	—	—	—	—	—	3/4	—	—	—	—	
	—	—	—	—	—	1	1	1	1	1	1	1	—	—	1	1	—	—	—	—	—	1	—	—	—	—	
	—	—	—	—	—	—	—	—	1 1/4	1 1/4	1 1/4	1 1/4	1 1/4	1 1/4	1 1/4	1 1/4	—	—	1 1/4	—	—	1 1/4	—	—	—	—	
	—	—	—	—	—	—	—	—	—	—	1 1/2	1 1/2	1 1/2	1 1/2	1 1/2	1 1/2	1 1/2	1 1/2	1 1/2	1 1/2	1 1/2	—	—	—	—	—	
	—	—	—	—	—	—	—	—	—	—	—	—	—	—	2	2	2	2	2	2	2	2	—	2	2	—	2
	—	—	—	—	—	—	—	—	—	—	—	—	—	—	—	2 1/2	2 1/2	2 1/2	2 1/2	2 1/2	2 1/2	2 1/2	—	2 1/2	—	—	2 1/2
	—	—	—	—	—	—	—	—	—	—	—	—	—	—	—	—	—	—	—	3	3	3	—	3	3	3	3
	—	—	—	—	—	—	—	—	—	—	—	—	—	—	—	—	—	—	—	—	—	—	3 1/2	3 1/2	3 1/2	3 1/2	3 1/2

Circuit Breaker Enclosures

Product Number	Knockout Figure No.
TE100F, S	1
TE100R	10
TE150F, S	4
TE150R	7
SF250F, S, FE250F, S	4
TF225R, FE250R	7
TJ400F, S, SG400F, S	5
TJ400R, SG400R	6
TJ600R, SG600R, FG600R	9
TJ600F, S, SG600F, S, FG600F, S	3
TK4V1200F, S	No KO
TK4V1200R	No KO
TQC100F, S	2
TQC100R	10
TQD225F, S	4
TQD225NR	8
TQD225R	7
TQL100F, S	2
TQL100R	10

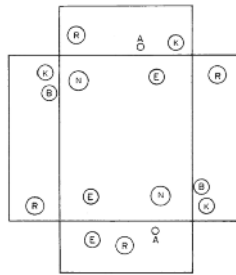


Fig. 1

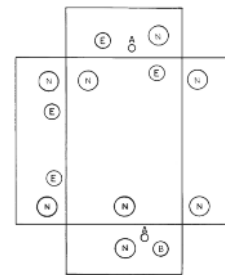


Fig. 2

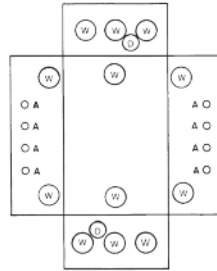


Fig. 3

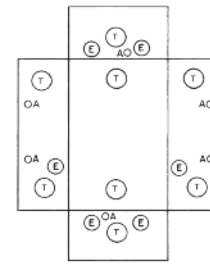


Fig. 4

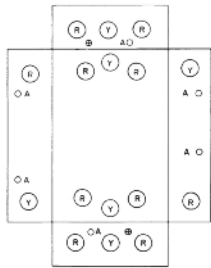


Fig. 5

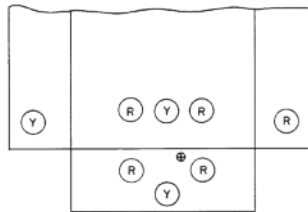


Fig. 6

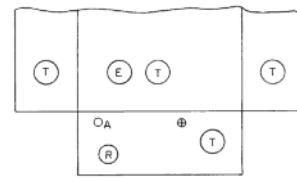


Fig. 7

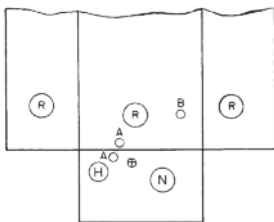


Fig. 8

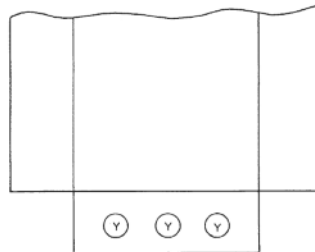


Fig. 9

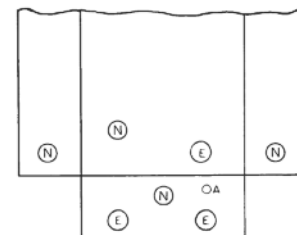


Fig. 10

