



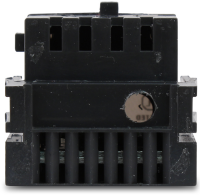
Catalog No. SRPE100A70

Description: SE 150 70A RMS RATING PLUG

UPC No 783164213096

Home > Circuit Breakers > Accessories

All Spectra, Power Break, and Power Break II circuit breakers use UL listed interchangeable rating plugs to establish or change the long time trip point of the circuit breaker. The key advantage of the rating plug is the flexibility of interchangeable rating plugs across the permissible current ratings of a given circuit breaker frame. Since the installed rating plug establishes the ampere rating of the breaker, the installer must verify the adequacy of the connected cable and/or bus bar ampacity. The National Electric Code allows cable size to be matched to the ampere rating established by the rating plug. 00A70



Representative Image

Descriptors

Category	Accessories
GO Schedule	135S

Specifications

Frame Type	SE150
Amperage	70 A
GSA Compliance	No
Stock Status	A

Classifications

UL File #	E11592
CSA File#	LR40350