

Product data sheet

Specifications

SQUARE D



Mini circuit breaker, E-Frame, 60A, 3 pole, 480Y/277VAC, 25kA max, bolt on, shunt trip

EDB34060SA

Main

Range of product	125 A Frame EDB-EGB-EJB
Product or component type	Miniature circuit-breaker
Device short name	EDB
Module type	E-Frame
Trip unit rating	1800 A

Complementary

[In] rated current	60 A
Maximum operating voltage	480Y/277 V AC
AWG gauge	AWG 12...AWG 2/0 aluminum AWG 14...AWG 2/0 copper
Breaking capacity	18 kA 277 V AC 25 kA 240 V AC 18 kA 480Y/277 V AC 25 kA 120 V AC 25 kA 120/240 V AC
Circuit breaker application	HACR rated
Electrical connection	Lugs aluminum
Holding current	630 A
Local signalling	Trip indicator
Mounting mode	Bolt-on
Number of poles	3
Number of spaces	4
Number of spaces required	4
Product destination	NF panelboard
Protection type	Overload Short-circuit
Device composition	Shunt trip
Trip unit technology	Thermal-magnetic
Breaking capacity code	D
Tightening torque	34.52 lbf.in (3.9 N.m) 0.00...0.01 in ² (2.5...6 mm ²) AWG 14...AWG 10) 49.56 lbf.in (5.6 N.m) 0.02...0.11 in ² (10...70 mm ²) AWG 8...AWG 2/0)
Height	5.66 in (143.76 mm)

Disclaimer: This documentation is not intended as a substitute for and is not to be used for determining suitability or reliability of these products for specific user applications

Width	3.92 in (99.57 mm)
Depth	4.05 in (102.87 mm)
Net weight	4 lb(US) (1.81 kg)

Environment

Product certifications	cULus
Ambient air temperature for operation	104 °F (40 °C)

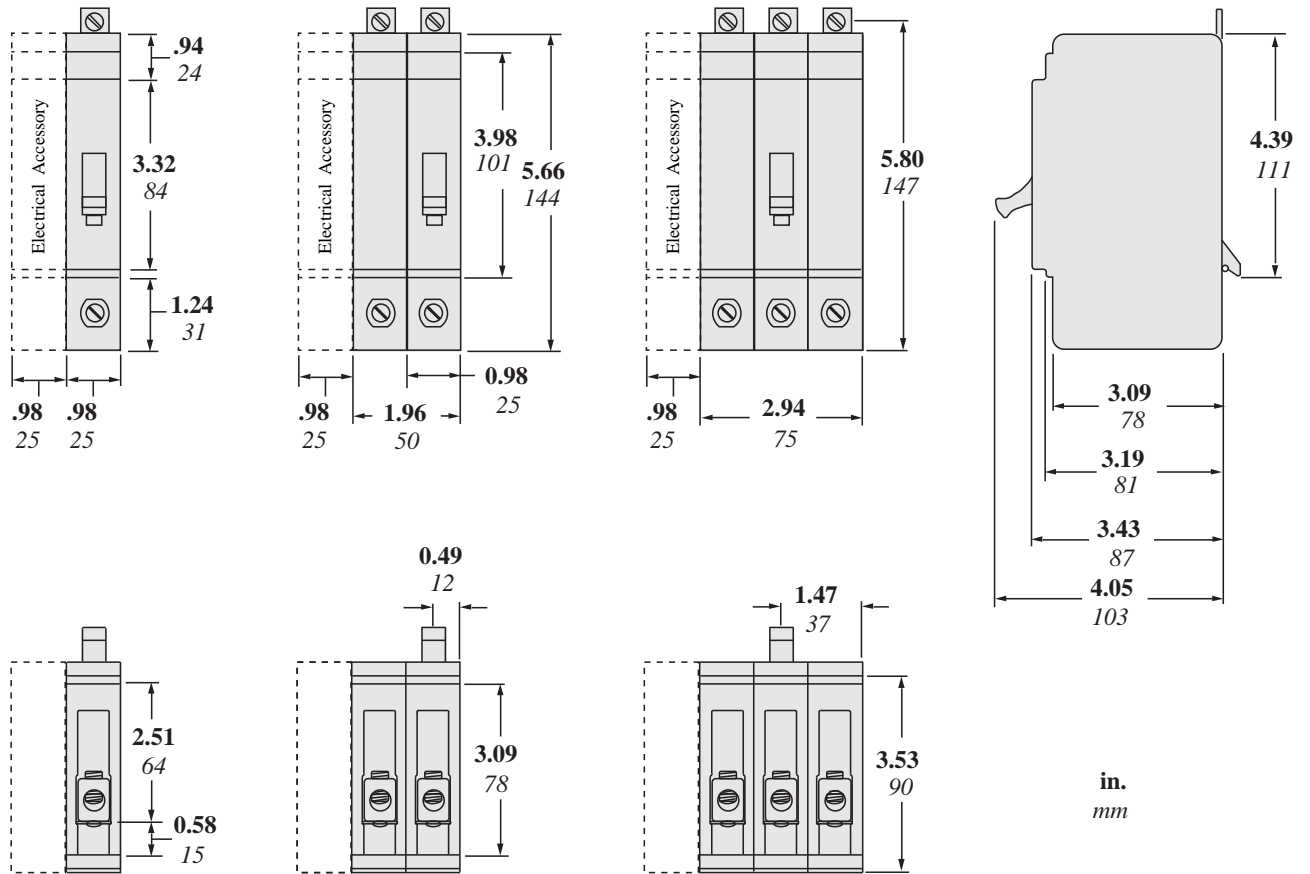
Packing Units

Unit Type of Package 1	PCE
Number of Units in Package 1	1
Package 1 Height	5.71 in (14.5 cm)
Package 1 Width	6.10 in (15.5 cm)
Package 1 Length	9.88 in (25.1 cm)
Package 1 Weight	4.21 lb(US) (1.91 kg)

Offer Sustainability

REACH Regulation	REACH Declaration
EU RoHS Directive	Pro-active compliance (Product out of EU RoHS legal scope) EU RoHS Declaration
Mercury free	Yes
China RoHS Regulation	China RoHS declaration Product out of China RoHS scope. Substance declaration for your information
RoHS exemption information	Yes

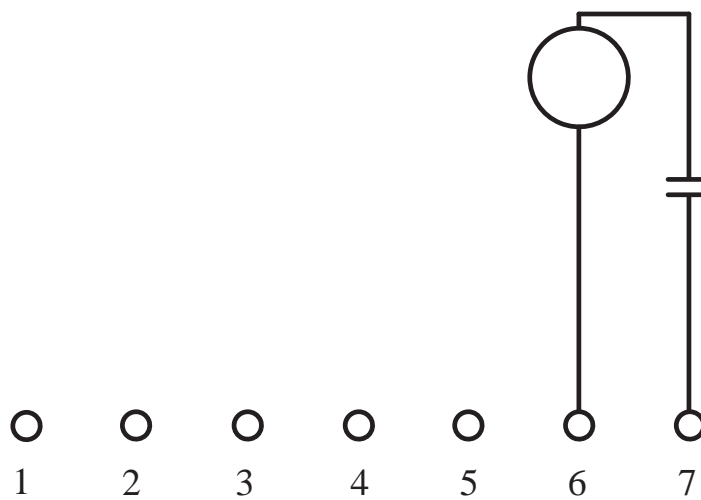
Dimensions



All dimensions are approximate.
 Also see technical drawings and/or documentation.

Wiring Diagram

Shunt Trip /
Disparo en derivación /
Déclencheur shunt



Recommended replacement(s)