

# ALBANY PARK

A COZY HOME BEGINS HERE



Sofa Assembly Instructions

## Box 1



F

2 x Armrest



G

3 x Seat Cushion

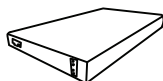


H

1 x Back Cushion

---

## Box 2



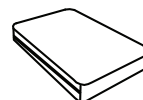
I

1 x Seat frame



J

1 x Back frame



K

2 x Back Cushions

---

## Metal Leg



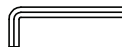
A

4 x Leg



B

1 x Middle Leg



C

1 x Tool



D

16 x Screw



E

16 x Washer

---

## Wooden Leg



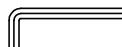
A

4 x Leg



B

1 x Middle Leg



C

1 x Tool



D

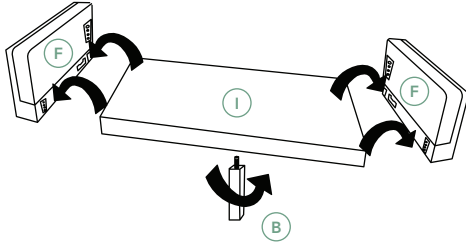
16 x Screw



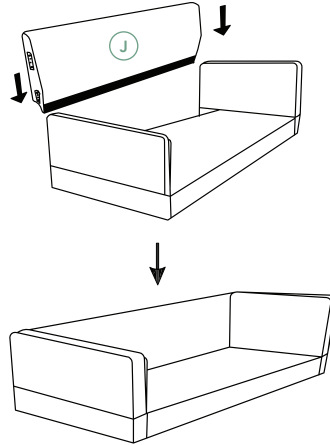
E

16 x Washer

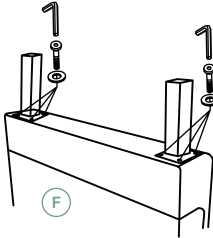
### Step 1



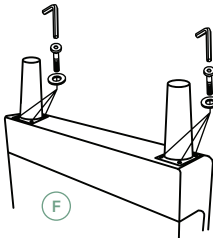
### Step 2



### Step 3

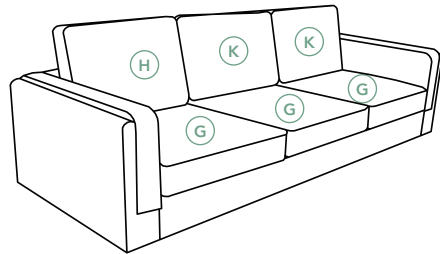


Assemble  
Metal Leg



Assemble  
Wooden Leg

### Step 4



**Pro Tip:** Double check that the back (J) is properly aligned within the arm (F) brackets before pushing the back down firmly to lock. If the arm appears to be bow outward or does not appear to be fully secured, please repeat Step 2 until all 4 brackets are aligned properly, then push down firmly to lock!

Be sure to check out our assembly video at [albanypark.com](http://albanypark.com).

