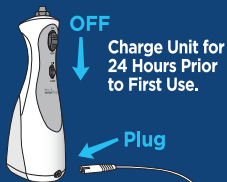


waterpik® waterflosser®

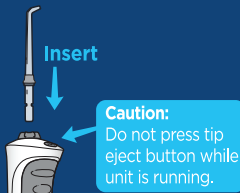
QUICK START GUIDE

WP-450

1 Unit Prep



A. Turn power switch **OFF**, plug power cord into outlet, and insert the charging cord into the unit.

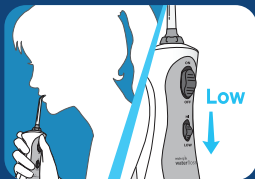


B. Press tip firmly into unit. To remove tip, push the tip eject button.



C. Unplug charging cord. Lift the flip top on reservoir and fill with warm water. Refill as needed.

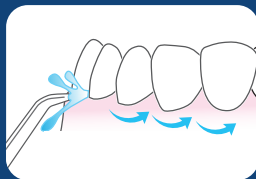
2 Water Floss



A. Start on low pressure and increase to your liking. With unit **OFF**, place tip in mouth. Turn power **ON**.



B. Lean over sink. Close lips enough to prevent splashing. Keep unit upright during use to ensure continuous water flow.



C. Aim water at the gumline at a 90 degree angle. Follow the gumline and pause briefly between teeth.

TO AVOID MESS: KEEP TIP IN MOUTH WHILE UNIT IS ON.

This device is only compatible with a voltage system of 230VAC, 50Hz. Do not plug this device into a voltage system that is different.