

# Buyers Guide

SleepAngel Medical – distributor product catalogue 2024

01.01.2024

## Gabriel Scientific OÜ

Healthcare Associated Infections (HAI) combined with antibiotic resistance is a global challenge. One of the often-overlooked areas in HAI prevention is soft surface – a proven link in a chain of cross-infection.

SleepAngel® PneumaPure® barrier bedding products are hermetically sealed and allow soft surfaces to be cleaned and disinfected as hard surfaces – improving both sustainability for the facility and safety for the patients and caregivers.

SleepAngel Medical is our patented bedding range, clinically proven to block pathogens\*, allergens, microbes, and mould. It is the world's first barrier bedding range to combine absolute barrier protection with airflow.

Technology is patent protected globally, independently tested and proven by Airmid Healthgroup.

Product range includes pillows, mattresses, positioners, blankets, top mattresses etc.

### AWARDS

- The Best Newcomer Award 2019, The Infection Prevention Society Conference
- Finalist at the Med-Tech Innovation Awards 2020, Medilink UK Healthcare Business Awards
- Top innovation of the year 2017, The Infection Prevention Strategy

\*Tested pathogens include MRSA, C. Difficile, E. coli, Pseudomonas aeruginosa, Candida albicans, Aspergillus niger, Norovirus, Influenza Type A, Adenovirus 5, Coronavirus 229E (HCoV 229E)



## PneumaPure® filter Technology Brief

### Abstract

The hospital bed is comprised of different components, which pose a potential risk of infection for the patient and care givers if not adequately decontaminated. Design of bedding products (such as pillows, mattresses, positioners, blankets, top mattresses) have not provided an adequate barrier to internal product contamination. Thread, needle perforations, air vents, and zippers all allow air and liquid borne pathogen ingress. Contaminated bedding then acts as a reservoir and potential vector for infection.

### Barrier bedding with PneumaPure® filter technology.

PneumaPure® filter is a highly specialised nano-porous filter composite (i.e., composed of extremely small pores) that functions as an effective barrier to pathogens including bacteria, virus, and fungus as well as to the ingress of liquid, while remaining highly air-permeable. Using this advanced technology in the design and manufacture of pillows, mattresses and other cushioning devices, results in a hermetically sealed soft surfaces that are a clinically proven barrier to pathogen ingress yet well ventilated, breathable, and comfortable.



## Filling materials

Unique and innovative PneumaPure® Filter technology is accompanied with quality filling materials to support patient's comfort and tissue viability:

1. Foam – Polyurethane foam is a resilient open-celled material, light and soft, non-abrasive. *Mattresses, positioners, wheelchair cushions*
2. Wadding – soft and thick thermally bonded Polyester fibre. *Blankets*
3. Microbeads – durable, with excellent heat and moisture transport, light, unequalled adaptability, and pressure distribution. *Positioners, nursing pillows*
4. **NEW!** Synthetic polyester fibre is upgraded to **PrimaLoft® Bio™**, the first-ever biodegradable\*, 100% recycled synthetic staple – responsive, fluffy filling, down alternative. *Pillows, positioners*
5. Memory foam – memory foam slowly contours to body weight when pressure is applied, and then regains its shape slowly once the pressure has been removed. *Positioners, mattresses, wheelchair cushions*
6. Perforated Memory foam with holes – to improve breathability and comfort. *Positioners*

The PneumaPure® Filter enabled SleepAngel® supporting soft surface products provide pressure area care and the most effective infection prevention barrier in the medical cushioning device market.

\*[www.SleepAngel-Medical.com](http://www.SleepAngel-Medical.com)



1



2



3



4



5



6

## Contents

### PILLOWS

7 Customized Range

9 Express Range

11 Pillow with a Transparent cover

### 13 BLANKETS

14 Customized Range

16 Express Range

### 18 POSITIONERS

19 Soap Shape Positioners

21 Triangular and Wedge Positioners

23 Cylinder Positioners

25 Head Positioners

27 Body Positioners

### 29 MATTRESSES

30 Mattress Range

31 Low Risk Mattress Details

32 Medium Risk Mattress Details

33 High Risk Mattress Details

34 Emergency Room Mattress

### 36 WHEELCHAIR CUSHIONS

37 Wheelchair Cushion Range

### 40 NEONATAL RANGE

41 Neonatal positioners **NEW!**

45 Neonatal Mattress

46 Nursing pillow

### 47 SURGICAL TABLE PADS

48 Surgical/Operating Table Pads

### 49 USER FEEDBACK



# PILLOWS

## Customized Range

1/2

### Pillow Specification

Fabric face:	100% Polyurethane; Royal blue or Medical white
Backing:	100% Polyamide
Fabric weight:	180 g/m <sup>2</sup>
Inner cover:	100% PrimaLoft® Bio™ Polypropylene 40g/m <sup>2</sup>
Filling:	100% PrimaLoft® Bio™ fibre
Label:	White print on Royal blue fabric; Light grey print on Medical white fabric
Cleaning:	Disinfect with max. 72% alcohol, max. 1000 ppm active chlorine. Wipe off with a water moistened cloth
Safety standards:	Filling flammability in accordance with The Furniture and Furnishings (Fire) (Safety) Regulations 1988 and Amendments Schedule 2 Part IBS 5852 : Part 2 : 1982 Pillow flammability in accordance with: BS 7175 ignition source 0, 1 and 5 BS EN ISO 12952-1:2010 and BS EN ISO 12952-2:2010





## Customized Range

2/2

Size (cm)	Total weight (g)	Filling weight (g)	Product code	Packaging per box*	MOQ
46x71	1050	900	3012019	8 pcs	1 box
50x60	850	700	3012024	8 pcs	1 box
40x80	1050	900	3012092	8 pcs	1 box
60x70	1150	1000	3012006	6 pcs	1 box
60x80	1265	1100	3012066	5 pcs	1 box
80x80	1610	1400	3010031	4 pcs	1 box

Custom sizes and different filling weights are available upon request. Tolerances product weight 3%; product size 1cm. \*Carton dimensions 77 x 57 x 48 cm



## Express Range

1/2

### Pillow Specification

Fabric face:	100% Polyurethane; Express blue
Backing:	100% Polyester
Fabric weight:	150 g/m <sup>2</sup>
Inner cover:	100% PrimaLoft® Bio™ Polypropylene 40g/m <sup>2</sup>
Filling:	100% PrimaLoft® Bio™ fibre
Label:	White print on Express blue fabric
Cleaning:	Disinfect with max. 72% alcohol, max. 1000 ppm active chlorine. Wipe off with a water moistened cloth
Safety standards:	Filling flammability in accordance with The Furniture and Furnishings (Fire) (Safety) Regulations 1988 and Amendments Schedule 2 Part I BS 5852 : Part 2 : 1982 Pillow flammability in accordance with: BS 7175 ignition source 0, 1 and 5 BS EN ISO 12952-1:2010 and BS EN ISO 12952-2:2010



## Express Range

2/2



Size (cm)	Total weight (g)	Product code	Packaging per box*	MOQ
46x71	820	3010015	Vacuum packed 15 pcs	1 box
50x60	620	3010013	Vacuum packed 15 pcs	1 box
60x60	830	3016012	Vacuum packed 10 pcs	1 box
60x70	980	3010041	Vacuum packed 10 pcs	1 box
60x80	1070	3010040	Vacuum packed 10 pcs	1 box

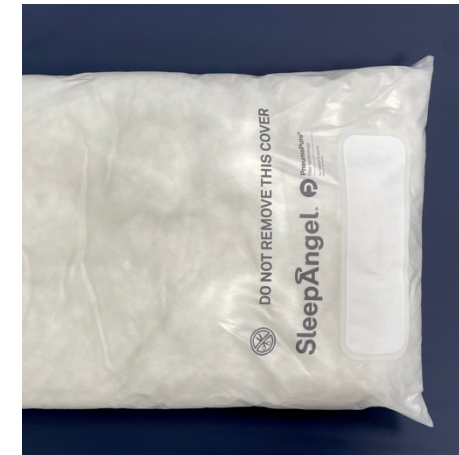
Custom sizes and different filling weights are available upon request. Tolerances product weight 3%; product size 1cm. \*Carton dimensions 77 x 57 x 48 cm

## Pillow with a Transparent cover

1/2

### Pillow Specification

Fabric:	100% Polyurethane; Transparent thermoplastic polyurethane 150g/m <sup>2</sup>
Fabric weight:	150 g/m <sup>2</sup>
Inner cover:	100% PrimaLoft® Bio™ Polypropylene 40g/m <sup>2</sup>
Filling:	100% PrimaLoft® Bio™ fibre
Label:	Black print on TPU
Cleaning:	Disinfect with max. 72% alcohol, max. 1000 ppm active chlorine. Wipe off with a water moistened cloth
Safety standards:	Filling flammability in accordance with The Furniture and Furnishings (Fire) (Safety) Regulations 1988 and Amendments Schedule 2 Part I BS 5852 : Part 2 : 1982 Pillow flammability in accordance with: BS 7175 ignition source 0, 1 and 5 BS EN ISO 12952-1:2010 and BS EN ISO 12952-2:2010



## Pillow with a Transparent cover

2/2



Size (cm)	Total weight (g)	Product code	Packaging per box*	MOQ
46x71	830	3018024	Packed 8 pcs	1 box

Custom sizes and different filling weights are available upon request. Tolerances product weight 3%; product size 1cm. \*Carton dimensions 77 x 57 x 48 cm

# BLANKETS

## Customized Range

1 / 2

### Blanket Specification

Fabric face:	100% Polyurethane; Royal blue or Medical white
Backing:	100% Polyamide
Fabric weight:	180 g/m <sup>2</sup>
Filling:	100% Polyester thermo bonded wadding 200 g/m <sup>2</sup>
Label:	White print on Royal blue fabric; Light grey print on Medical white fabric
Cleaning:	Disinfect with max. 72% alcohol, max. 1000 ppm active chlorine. Wipe off with a water moistened cloth
Safety standards:	Blanket flammability in accordance with: BS 7175 ignition source 0, 1 and 5 BS EN ISO 12952-1:2010 and BS EN ISO 12952-2:2010



## Customized Range

2/2



Size (cm)	Total weight (g)	Product code	Packaging per box*	MOQ
200x135	1530	4012005	6 pcs	1 box
200x140	1600	4012018	6 pcs	1 box

Custom sizes and different filling weights are available upon request. Tolerances product weight 3%; product size 1cm. \*Carton dimensions 77 x 57 x 48 cm

## Express Range

1/2

### Express Blanket Specification

Fabric face:	100% Polyurethane; Express blue
Backing:	100% Polyester
Fabric weight:	150 g/m <sup>2</sup>
Filling:	100% Polyester thermo bonded wadding 200 g/m <sup>2</sup>
Label:	White print on Express blue fabric
Cleaning:	Disinfect with max. 72% alcohol, max. 1000 ppm active chlorine. Wipe off with a water moistened cloth
Safety standards:	Blanket flammability in accordance with: BS 7175 ignition source 0, 1 and 5 BS EN ISO 12952-1:2010 and BS EN ISO 12952-2:2010





## Express Range

2/2



Size (cm)	Total weight (g)	Product code	Packaging per box*	MOQ
200x135	1400	4010015	Vacuum packed 10 pcs	1 box
200x140	1440	4010032	Vacuum packed 10 pcs	1 box

Custom sizes and different filling weights are available upon request. Tolerances product weight 3%; product size 1cm. \*Carton dimensions 77 x 57 x 48 cm

# POSITIONERS

## Soap Shape Positioners

1/2

### Specification

Fabric face:	100% Polyurethane; Royal blue
Backing:	100% Polyamide
Fabric weight:	180 g/m <sup>2</sup>
Filling:	Different foam types
Label:	White print on Royal blue fabric
Cleaning:	Disinfect with max. 72% alcohol, max. 1000 ppm active chlorine. Wipe off with a water moistened cloth
Safety standards:	Flammability in accordance with: BS EN ISO 12952-1:2010 and BS EN ISO 12952-2:2010 UK Qualities at special request





## Soap Shape Positioners

2/2

Shape	Direct foam size / Cover size (cm)	Filling type	Total weight (g)	Product code	Packaging per box*	MOQ
Soap	30x40x8/ 34x43	MF 45 kg/m <sup>3</sup> moulded foam	570	3012022	25 pcs	1 box
Soap	42x66x11/ 47x71	MF 45 kg/m <sup>3</sup> moulded foam	1410	3012020	6 pcs	1 box
Soap	42x56x11/ 47x61	MF 45 kg/m <sup>3</sup> moulded foam	1200	3012042	8 pcs	1 box

Custom sizes and different filling weights are available upon request. Tolerances product weight 3%; product size 1cm. \*Carton dimensions 77 x 57 x 48 cm

## Triangular and Wedge Positioners

1/2

### Specification

Fabric face:	100% Polyurethane; Royal blue
Backing:	100% Polyamide
Fabric weight:	180 g/m <sup>2</sup>
Filling:	Different foam types
Label:	White print on Royal blue fabric
Cleaning:	Disinfect with max. 72% alcohol, max. 1000 ppm active chlorine. Wipe off with a water moistened cloth
Safety standards:	Flammability in accordance with: BS EN ISO 12952-1:2010 and BS EN ISO 12952-2:2010 UK Qualities at special request





## Triangular and Wedge Positioners

2/2

Shape	Direct foam size	Filling type	Total weight (g)	Product code	Packaging per box*	MOQ
Wedge	40x20x10	MF 50 kg/m <sup>3</sup> (VE5015)	220	3012072	35 pcs	1 box
Wedge	60x38x10	Standard foam (VB2540)	440	3012069	12 pcs	1 box
Triangular	30x30x30	MF 45 kg/m <sup>3</sup> (VE4515)	600	3012018	10 pcs	1 box

Custom sizes and different filling weights are available upon request. Tolerances product weight 3%; product size 1cm. \*Carton dimensions 77 x 57 x 48 cm

## Cylinder Positioners

1/2

### Specification

Fabric face:	100% Polyurethane; Royal blue
Backing:	100% Polyamide
Fabric weight:	180 g/m <sup>2</sup>
Filling:	Different foam types
Label:	White print on Royal blue fabric
Cleaning:	Disinfect with max. 72% alcohol, max. 1000 ppm active chlorine. Wipe off with a water moistened cloth
Safety standards:	Flammability in accordance with: BS EN ISO 12952-1:2010 and BS EN ISO 12952-2:2010 UK Qualities at special request



## Cylinder Positioners

2/2



Shape	Direct foam size (cm)	Filling type	Total weight (g)	Product code	Packaging per box*	MOQ
Cylinder	15x60	MF 50 kg/m <sup>3</sup> (VE5015)	630	3012047	15 pcs	1 box

Custom sizes and different filling weights are available upon request. Tolerances product weight 3%; product size 1cm. \*Carton dimensions 77 x 57 x 48 cm



## Head Positioners – Open-end & Full Circle

1/2

### Specification

Fabric face:	100% Polyurethane; Royal blue
Backing:	100% Polyamide
Fabric weight:	180 g/m <sup>2</sup>
Filling:	100% PrimaLoft® Bio™ fibre
Label:	White print on Royal blue fabric, light grey print on white fabric
Cleaning:	Disinfect with max. 72% alcohol, max. 1000 ppm active chlorine. Wipe off with a water moistened cloth
Safety standards:	Flammability in accordance with BS EN ISO 12952-1:2010 and BS EN ISO 12952-2:2010



## Head Positioners

2/2



Shape	Size (cm)	Filling type	Total weight (g)	Product code	Packaging per box*	MOQ
Fill circle	36x43	Fibre	375	3012077	13 pcs	1 box
Open-end	37x40/13	Fibre	390	3012078	13 pcs	1 box

Custom sizes and different filling weights are available upon request. Tolerances product weight 3%; product size 1cm. \*Carton dimensions 77 x 57 x 48 cm

## Body Positioners

1/2

### Specification

Fabric face:	100% Polyurethane; Royal blue
Backing:	100% Polyamide
Fabric weight:	180 g/m <sup>2</sup>
Filling:	100% Polyester wadding 320g/m <sup>2</sup>
Label:	White print on Royal blue fabric
Cleaning:	Disinfect with max. 72% alcohol, max. 1000 ppm active chlorine. Wipe off with a water moistened cloth
Safety standards:	Flammability in accordance with BS EN ISO 12952-1:2010 and BS EN ISO 12952-2:2010



## Body Positioners

2/2



Shape	Size (cm)	Filling type	Total weight (g)	Product code	Packaging per box*	MOQ
Cylinder	D25x200	Wadding	2910	3014001	2	1 box

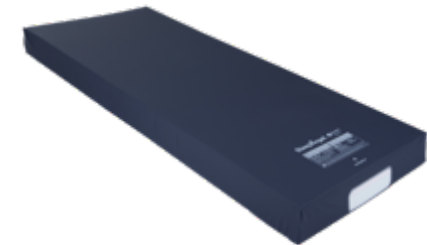
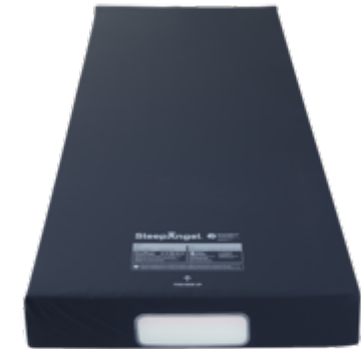
Custom sizes and different filling weights are available upon request. Tolerances product weight 3%; product size 1cm. \*Carton dimensions 77 x 57 x 48 cm

# MATTRESSES

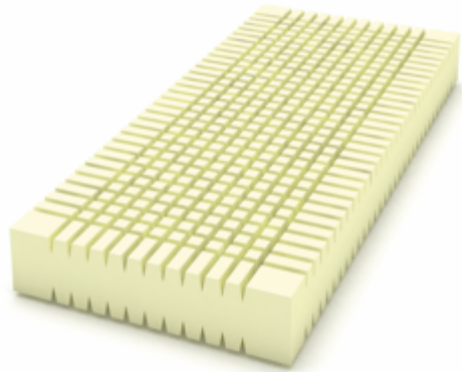
## Mattress Range

### Specification

Fabric face:	100% Polyurethane; Dark blue
Backing:	100% Polyamide
Fabric weight:	215 g/m <sup>2</sup>
Label:	White print on Dark blue fabric
Filling:	Low, medium, and high risk (specifications on next pages)
Cleaning:	Disinfect with max. 72% alcohol, max. 1000 ppm active chlorine. Wipe off with a water moistened cloth
Safety standards:	Flammability in accordance with: BS EN 597-1:1995 & BS EN 597-2:1995



## Low Risk Mattress Details

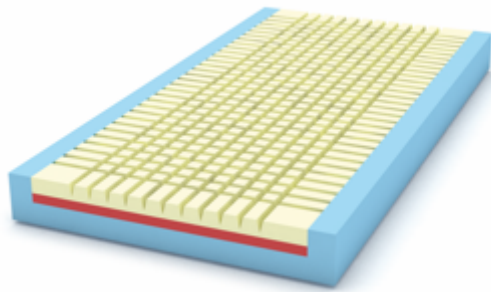


Filling:	Castellated soft high resilience polyurethane foam
Density:	40 kg/m <sup>3</sup>
Fatigue class:	Very severe

Size (cm)	Total weight (kg)	Product code	Packaging	MOQ
198x80x15	10	3060009	1 pc per bag/ 7 pcs per pallet	1 pallet
198x88x15	11	3060010	1 pc per bag/ 5 pcs per pallet	1 pallet

Custom sizes and different filling weights are available upon request. Tolerances product weight 3%; product size 1cm.

## Medium Risk Mattress Details



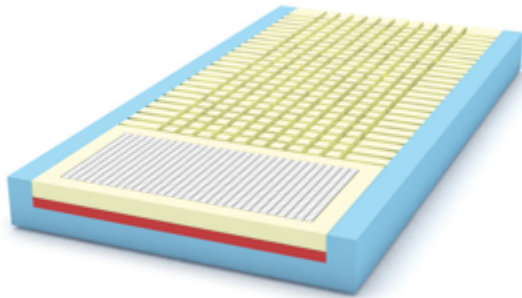
Filling:	Top: Castellated soft memory foam Middle part: Soft high resilience polyurethane foam Side walls and base: Hard high resilience polyurethane foam
Density:	Top: 60 kg/m <sup>3</sup> memory foam Bottom and side walls: 45 kg/m <sup>3</sup> high resilience polyurethane foam Middle part: 40 kg/m <sup>3</sup> high resilience polyurethane foam
Fatigue class:	Very severe

Size (cm)	Total weight (kg)	Product code	Packaging	MOQ
198x80x15	12,50	3060008	1 pc per bag/ 7 pcs per pallet	1 pallet
198x88x15	14,00	3060031	1 pc per bag/ 5 pcs per pallet	1 pallet

Custom sizes and different filling weights are available upon request. Tolerances product weight 3%; product size 1cm.



## High Risk Mattress Details



Filling:	Top: Castellated soft memory foam. Gel inserted on heel area Middle part: Soft high resilience polyurethane foam Side walls and base: Hard high resilience polyurethane foam
Density:	Top: 60 kg/m <sup>3</sup> memory foam Middle part, bottom, side walls: 40 kg/m <sup>3</sup> high resilience polyurethane foam
Fatigue class:	Very severe

Size (cm)	Total weight (kg)	Product code	Packaging	MOQ
198x80x15	12,00	3060007	1 pc per bag/ 7 pcs per pallet	1 pallet
198x88x15	13,50	3060011	1 pc per bag/ 5 pcs per pallet	1 pallet

Custom sizes and different filling weights are available upon request. Tolerances product weight 3%; product size 1cm.

## Emergency Room Stretcher Mattress

### Specification

Fabric:	Mattress fabric: Transparent thermoplastic polyurethane 150g/m <sup>2</sup> Zippered mattress cover fabric: - Top: Polyurethane coated polyamide, Dark Blue 215 g/m <sup>2</sup> - Bottom: Polyurethane coated polyamide, Anti-slip Grey 210 g/m <sup>2</sup> Four-way stretch
Label:	Screen print – black print on TPU and white print on blue fabric
Filling:	Top: Soft Memory Foam 40kg/m <sup>3</sup> Middle part: Soft high resilience Polyurethane Foam 40kg/m <sup>3</sup> Base: Hard high resilience Polyurethane Foam 45kg/m <sup>3</sup>
Cleaning:	Disinfect with max. 72% alcohol, max. 1000 ppm active chlorine. Wipe off with a water moistened cloth. If the cover has been exposed to bodily fluids such as blood, a 1% Chlorine solution (10,000 ppm) and cold water can be used
Safety standards:	Flammability in accordance with BS EN ISO 12952-1:2010 and BS EN ISO 12952-2:2010





## Emergency Room Stretcher Mattress Details

Details	Size (cm)	Total weight (kg)	Product code	Packaging	MOQ
Mattress & cover set	188x68x10	7	6010007	12 pc per pallet	1 pallet
Mattress cover separately	188x68x10	0,7	7010082	20 pc in box	1 box

Custom sizes and different filling weights are available upon request. Tolerances product weight 3%; product size 1cm.

# WHEELCHAIR CUSHIONS

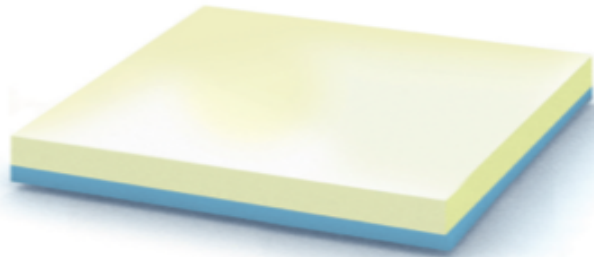
## Wheelchair Cushions

### Specification

Fabric face:	100% Polyurethane; Dark blue and Anti-slip grey
Backing:	100% Polyamide
Fabric weight:	215 g/m <sup>2</sup>
Bottom:	Anti-slip
Label:	White print on Dark blue fabric
Cleaning:	Disinfect with max. 72% alcohol, max. 1000 ppm active chlorine. Wipe off with a water moistened cloth



## Low Risk Wheelchair Cushion

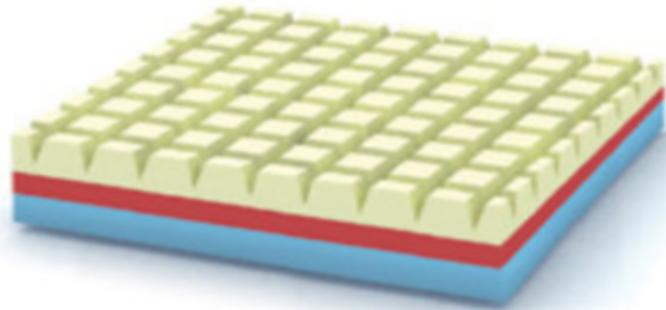


Filling:	Top: Soft memory foam Base: Hard high resilience polyurethane foam
Density:	Top: 45 mm 60 kg/m <sup>3</sup> memory foam Base: 25 mm 40 kg/m <sup>3</sup> hard foam

Size (cm)	Total weight (g)	Product code	Packaging per box*	MOQ
40x40x7	740	3013003	12 pcs	1 box
40x45x7	820	3013005	10 pcs	1 box
45x45x7	1027	3013011	10 pcs	1 box

Custom sizes and different filling weights are available upon request. Tolerances product weight 3%; product size 1cm. \*Carton dimensions 77 x 57 x 48 cm

## Medium Risk Wheelchair Cushion



Filling:	Top: Castellated soft memory foam Middle part: Soft high resilience polyurethane foam Base: Hard high resilience polyurethane foam
Density:	Top: 50 mm 60 kg/m <sup>3</sup> memory foam Middle part: 20 mm 40 kg/m <sup>3</sup> soft foam Base: 30 mm 45 kg/m <sup>3</sup> hard foam

Size (cm)	Total weight (g)	Product code	Packaging per box*	MOQ
40x40x10	956	3018027	8 pcs	1 box

Custom sizes and different filling weights are available upon request. Tolerances product weight 3%; product size 1cm. \*Carton dimensions 77 x 57 x 48 cm

# NEONATAL RANGE



## MESI collection

### Neonatal fluidized positioner specification

Fabric face:	100% Polyurethane; Royal blue
Fabric weight:	180 g/m <sup>2</sup>
Filling:	Floam, fluidized filling material
Label:	White print on Royal blue fabric
Cleaning:	Disinfect with max. 72% alcohol, max. 1000 ppm active chlorine. Wipe off with a water moistened cloth
Best for:	Mouldable fluidized pressure redistribution positioner to assist in the safe positioning of the baby



## MESI collection

### Neonatal fluidized positioner range

2/2



Size (cm)	Total weight (g)	Product	Product code	Packaging per box*	MOQ
19x27	312	MESI FloForm positioner, Small	3015006	32	1 box
24x38	710	MESI FloForm positioner, Medium	3015007	15	1 box
48x63	3400	MESI FloForm positioner, Large	3015008	6	1 box

Custom sizes and different filling weights are available upon request. Tolerances product weight 3%; product size 1cm. \*Carton dimensions 40 x 60 x 60 cm

## MESI collection

### Neonatal bumper – Regular, High

Fabric face:	100% Polyurethane; Royal blue
Fabric weight:	180 g/m <sup>2</sup>
Filling:	Polyurethane foam, Foam density 34kg/m <sup>3</sup>
Label:	White print on Royal blue fabric
Cleaning:	Disinfect with max. 72% alcohol, max. 1000 ppm active chlorine. Wipe off with a water moistened cloth
Best for:	Position, nest, comfort, and contain babies



## MESI collection

### Neonatal bumper range

2/2



Size (cm)	Total weight (g)	Product name	Product code	Packaging per box*	MOQ
85x9x5,5	662	MESI Bumper 85x9x5,5 cm	3015010	20	1 box
85x11x5,5	672	MESI Bumper 85x11x5,5 cm high	3015011	20	1 box

Custom sizes and different filling weights are available upon request. Tolerances product weight 3%; product size 1cm. \*Carton dimensions 40 x 60 x 60 cm

## Neonatal Mattress

### Specification



Fabric face:	100% Polyurethane; Top: Royal blue or Medical white; Base: Anti-slip grey
Backing:	100% Polyamide
Fabric weight:	Top 180g/m <sup>2</sup> , Base 215g/m <sup>2</sup>
Label:	White print on Royal blue fabric; Light grey print on Medical white fabric
Filling:	3 Layers: 12 mm firm base layer foam 40kg/m <sup>3</sup> + 12 mm medium soft middle layer foam 27 kg/m <sup>3</sup> + 15 mm top memory foam slight contouring layer 60kg/m <sup>3</sup>
Cleaning:	Disinfect with max. 72% alcohol, max. 1000 ppm active chlorine. Wipe off with a water moistened cloth
Safety standards:	Flammability in accordance with EN 597-1:1994, EN 597 2:1994 and BS 6807:2008, Section 9, Ignition Source 5 (from BS 7177:2008+A1:2011 Medium Hazard)

Size (cm)	Total weight (g)	Product code	Packaging per box*	MOQ
31x61x4	490	3070000	16 pcs	1 box

Custom sizes and different filling weights are available upon request. Tolerances product weight 3%; product size 1cm. \*Carton dimensions 77 x 57 x 48 cm

## Nursing pillow

### Specification



Fabric face:	100% Polyurethane; Top: Royal blue or Medical white
Backing:	100% Polyamide
Fabric weight:	180g/m <sup>2</sup>
Label:	White print on Royal blue fabric; Light grey print on Medical white fabric
Filling:	Microbeads
Cleaning:	Disinfect with max. 72% alcohol, max. 1000 ppm active chlorine. Wipe off with a water moistened cloth
Safety standards:	Flammability in accordance with BS EN ISO 12952-1:2010 and BS EN ISO 12952-2:2010

Size (cm)	Filling type	Total weight (g)	Product code	Packaging per box*	MOQ
66x63x15	Microbeads	850	3012101	4 pcs	1 box

Custom sizes and different filling weights are available upon request. Tolerances product weight 3%; product size 1cm. \*Carton dimensions 77 x 57 x 48 cm

# OPERATING TABLE PADS

## Now available: Operating/Surgical Table Pads

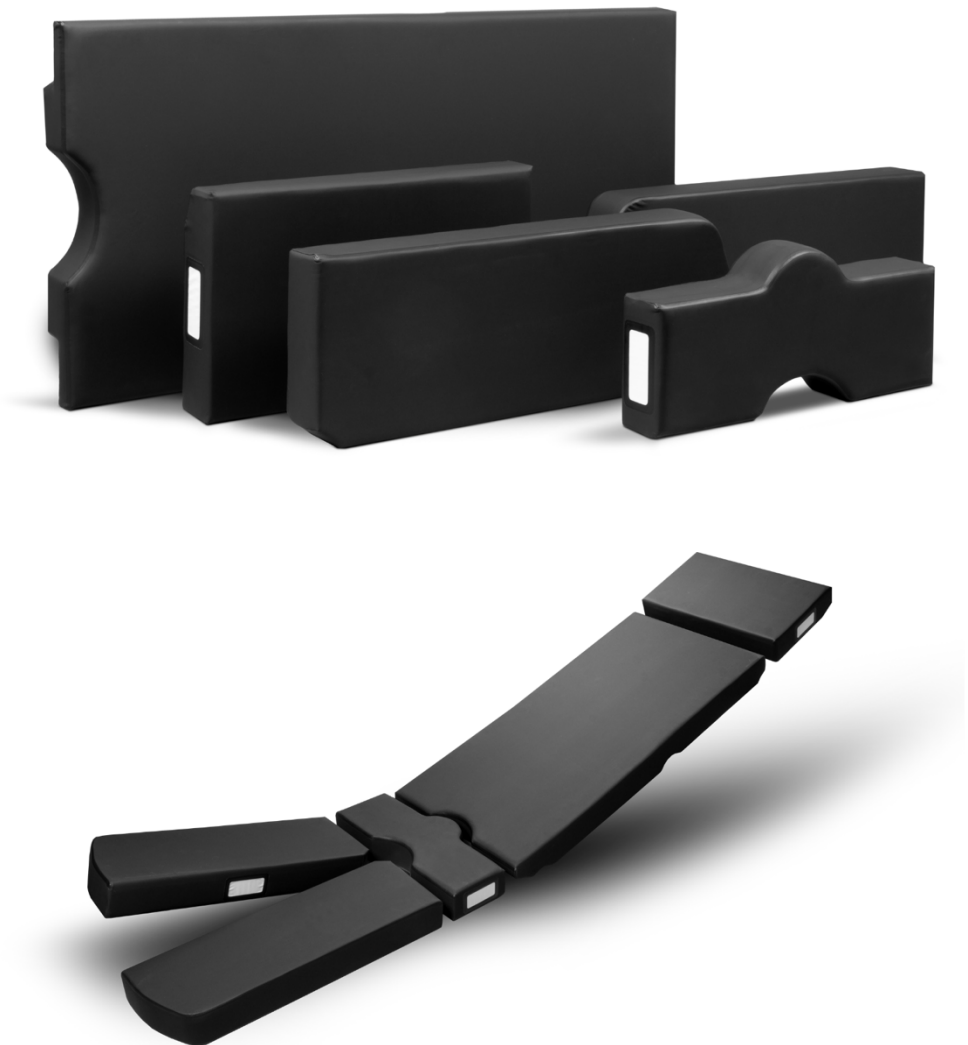
SleepAngel Operating/Surgical Table Pads:

- With unique and innovative PneumaPure® Filter technology
- With quality filling materials to support patient's comfort and tissue viability

SleepAngel Operating/Surgical Table Pads provide:

- Unique barrier features secure unrivalled infection prevention features.
- Sustainability and safe long-term utilisation, when correct cleaning and disinfection procedures are followed.

Please contact us for further information  
[info@SleepAngel-Medical.com](mailto:info@SleepAngel-Medical.com)







### SleepAngel Medical cylinder positioners in Glasgow Royal Infirmary ICU

SleepAngel Medical Barrier Bedding cylinder positioner has proven to be a useful tool for proning acute Covid-19 patients as they become ARDS. Proning creates pressure on the chest and the cylinders both help to relieve the pressure and maintain needed patient position. In addition, they can be disinfected on site and reused for other patients as they are a proven barrier against viruses, allergens, pathogens, and liquids.

Suzanne Madden: “12 bolster pillows were delivered to Glasgow Royal Infirmary ICU from SleepAngel Medical Barrier Bedding, these will make a huge difference to our ICU patients that need to be proned. Thank You.”



### Patient feedback. David, patient in Prague hospital:

"I was using SleepAngel Medical pillow for the last two months when I was in the hospital. I had problems with my neck spine and felt the difference after the first night using the pillow. It is an ideal for someone like me who is used to sleeping on the side. It was actually so good that I decided to get it for myself at home too."

### Gabriel Scientific OÜ

Mauri tee 3, Papsaare küla, Pärnu linn 88317, Estonia  
 info@SleepAngel-Medical.com  
 www.SleepAngel-Medical.com  
 phone: +372 5811 9997  
 @SleepAngelMedical