

2024 SIRE DIRECTORY

# GRISWOLD

— | C A T T L E | —

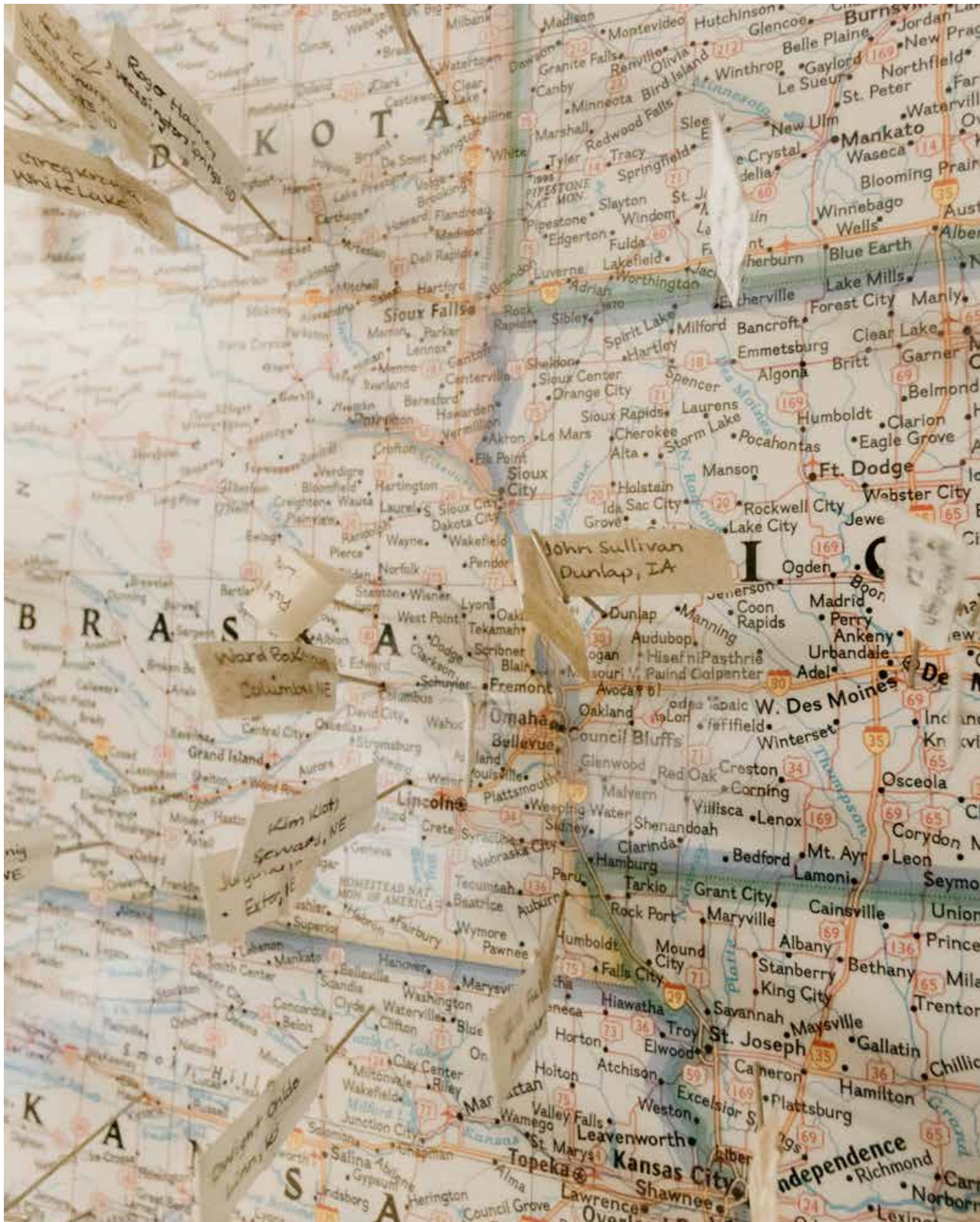




G-

R A I S I N G   T H E   B A R

*Without AI we could never utilize the full potential of our cow base. Huge pastures, breeding out of the back of the trailer, early mornings at 4:00 AM and late nights. String lights run by a generator and plenty of miles between point A and point B. Most of us don't have perfect set ups to breed, that said a couple panels, maybe a corral, someplace to plug in your water, it doesn't matter if it's a cigarette lighter in your truck, it's doable, we know it because we do it. AI will change your program faster than anything else you can do.*





## ranch contacts

JOHN GRISWOLD 405.780.3300

JEANNIE YARDLEY GRISWOLD 435.421.1200  
[jeanniegriswold@gmail.com](mailto:jeanniegriswold@gmail.com)

GREG GRISWOLD 405.780.0100

JORDON MULLETT 740.502.6970

CODY KNUFFMAN 405.614.2780

CODY GLENNY 580.670.0289

TYSON VANTREASE 405.334.6650

## griswold office

MACEE MULLETT

405.372.3300

9313 east 6th ave

stillwater, oklahoma 74074

### EXCLUSIVE G- SEMEN DISTRIBUTORS

KENT JAECKE 405.408.2440

*Jaecke is on the road 24/7 during breeding season.*

*Follow along on Facebook to see where he's at and to schedule a visit.*

DEAN DRUMMOND 563.579.5199 | IOWA

JEFF CLUXTON 937.213.1252 | OHIO

GENE MULLETT 740.502.4080 | OHIO

MATT TEETS 304.703.3940 | WEST VIRGINIA

BRENT MURPHY 660.287.7727 | MISSOURI


JUSTIN VANDEWOESTYNE 306.461.6031 | CANADA 🇨🇦

### WE SHIP SEMEN EVERYDAY. ORDER ONLINE OR CALL THE OFFICE.

We made as big of an investment next to a few of the bulls in this book as we ever have in our Griswold Genetics business. We know what it's like to wait on semen when you have a set of cows set up and not be able to get a tank. We bought a large number of tanks last year and were able to get tanks turned around within a week. We ship tanks all over the United States and will keep the shipping rates as reasonable as possible. Either order online or call Macee in the office at 405.372.3300 and we will get a tank packed and ready to head your way.

[www.griswoldcattle.com](http://www.griswoldcattle.com)





We are a real family, we take real investments, in real cattle that we believe in. There is no huge company standing behind us, no backup plan. We ranch just like you, cattle are our life. These genetics, they have to work, if they don't you fail and we fail with you. Our day in and day outs are based in the pasture, we have long days sorting, branding, putting up hay, and we know the long nights of breeding in the headlights, a backwards calf, and that dirty dozen that won't drop the last calves so you can go to sleep. We have survived bouts of scours, had sales that didn't go as planned, and wondered what we would do when the haystacks ran out. We pray for rain, and plant the crops with the faith that they will come, just like you. Griswold Cattle is a real family, when you buy semen from us you buy into our dream that we are all in this together and together we can all reach the top.

If there is one thing we do at Griswold Cattle it is diversify. We love those good made, good looking females, but we realize it takes effort to get them. Through the years we have bought different set's of cattle, bred them, changed them, and turned for a new opportunity. We've ran stockers, we've retained ownership on our calves and fed them through, we sell bulls and try to sell a few high dollar females, if there is a sector of the industry we have seen it, tried it, and lived it. There has been a lot of water under the bridge, a lot of miles, and whole lot of change and growth.

Growth doesn't come from comfort zones, it takes struggle, and it takes work, to grow, and then to maintain. This set of bulls are ones we have hand selected, cattle that are above everything else, **FUNCTIONAL**. We want you to make a profit, we price every bull in this book as realistic as we can so every one of you can use them. I come from a long line of cattlemen but when I started on my own I had 13 head of cows and some big dreams. The right genetics and keeping consistency one cow at a time can build **ANYONE'S** program. Good cattle are available to everyone, it just takes work. The thing I love the most about all these bulls is that it allows everyone of you with the hope of making your program better to use a straw of semen and have some of the top high dollar genetics of proven producers available to **YOU**, we don't hold them back, we buy them to make our program better and we buy them to make **YOUR** program better. We always say we are all in this together, we mean it.



[www.griswoldcattle.com](http://www.griswoldcattle.com)







Simmental



## JSUL SOMETHING ABOUT MARY 8421

ASA 3656879 | BREED PUREBRED SIMMENTAL | ACT BW 82 | ADJ WW 775

Owned with Sullivan Farms & Osborn Cattle

**SIRE** W/C RELENTLESS 32C  
 YARDLEY UTAH Y361  
 MISS WERNING KP 8543U

**DAM** JBSF PROUD MARY  
 YARDLEY HIGH REGARD  
 BROOKS STEELMAGNOLIA

# Maternal MAKER

CE	BW	WW	YW	MCE	MILK	STAY	REA	API	TI
14	1.4	77	1172	5.3	178	128	101	123	75.7

As we sort through our replacement heifers, picture for the bull sale, and watch our new calves hitting the ground it is evident the influence that SAM will have on our program for years to come. The cattle are good, good enough that when we found out we were going to lose SAM as partners, all of us as owners quickly realized that the potential of SAM had not yet been met, he needed to be cloned. The clones have been an exciting endeavor for us, we debated just releasing one, but they are both the kind that you fall in love with. The SAM inventory on semen is dwindling quickly and will be sold at auction only. Clones will both be available on the open market as well as sexed later this spring. At the 605 bull stud last week, the comment was made that if you didn't know who the clones were, you would still use them just because of how hard they hit you when you step in the pen, no matter the fact they are clones to the "Ole Man" they are both promotional quality, we are proud to stand behind them.



We can honestly say that SAM is hands down the most consistent sire we have ever used in our program. He works on an array of cattle, and he makes those sale topping kind. It's not just winning shows, it's the fact they are good cattle, there are no culls, no sorry bottom end, just consistently solid cattle, regardless if you own a purebred cow base or you are just trying to improve a great set of commercial cows.

It is with great excitement that we introduce you to SAM I AM and I AM SAM, the bulls who will take the legacy of SAM and run with it.



Legends *never* die.  
Introducing clones of the industry great,  
**SOMETHING ABOUT MARY**

SAMM  
*clones*



**I A M S A M**

ASA 4325772 | BREED PUREBRED SIMMENTAL



**S A M I A M**

ASA 4325771 | BREED PUREBRED SIMMENTAL



BET ON RED  
4814  
605 SIRE



# W/C BET ON RED 481H

ASA 3808091 | BREED PUREBRED SIMMENTAL | ACT BW 88 | ADJ WW 709

*Owned with Maple Lane Farms & Jared Werning*

Bet on Red has proven to work on a variety of cattle across the country. He made sale toppers and show winners but the biggest accomplishment he made was solid, consistently good cattle. Four shots of the 8543U line up two on top, two on bottom to create a unique line-breeding result to as great of a cow as you could possibly make. We've seen it done in the Angus world with Ohlde genetics and you know the potency of one shot of that, seldom have I seen it done in the Simmy world and especially not on a female like her.

He got used the first year out of curiosity, that bold red baldy face color and the fact he was flat out fancy, last year he got used because he made solid, good cattle. It's easy to say there has never been a red bull before him that has produced like he has. We used him heavily across the spectrum and they are the kind of cattle that work!

One of the questions we get asked often is, "Is he big enough." John's exact words, "That bull is not little, he's anything but." We have had great reports on the bulls and females out of him, he adds maternal but he still has plenty of power to make big scrotaled, big topped, good looking bulls. The cattle have some punch, they have grow, and we promise they have all the quality to go with it.

CE	BW	WW	YW	MCE	MILK	STAY	REA	API	TI
11.6	1.0	71.7	103.3	5.2	19.8	12.3	1.04	126.2	76.5

W/C BANKROLL 811D

**SIRE** **W/C FORT KNOX 609F**  
K-LER DOLLY'S QUEEN 609D

W/C RELENTLESS 32C

**DAM** **W/C ANGEL 7113E**  
W/C MISS ANGEL 2870Z

**BOTTOM** Bet On Red Daughters





CE	BW	WW	YW	MCE	MILK	STAY	REA	API	TI
12.4	2.1	73.3	96.1	8.1	25.7	14.1	1.07	116.7	74.2

W/C LOADED UP 1119Y  
**W/C BANKROLL 811D** *SIRE* *DAM* **KS MISS SEQUOIA Y770**  
 MISS WERNING KP 8543U ASR MS SUPER BALDY U851



What sets apart the mediocre from the great? **DETAILS!** It is about the details and Bank On It sets those details into motion. For those of you who aren't ready to jump on the red train yet but don't mind a few great red ones this is a bull you can't help but get excited about. Bank On It is out of one of the top cows in the country that offers an outcross to the typical genetics found in mainstream pedigree's.

These are the right kind of cattle, they are big bodied, they grow, and they come out with a look all their own. When you sort them down the alley you quickly realize they are the kind you want, you will keep them as bulls and the heifers are the herd building kind.

**ASA 3808104 | BREED PUREBRED SIMMENTAL | ACT BW 81 | ADJ WW 785**  
*Owned with Gustin Cattle & Werning Cattle*



**TOP** Bank On It Daughters  
**BOTTOM** Dam of Bank On It, KS MISS Sequoia Y770



BANK *On It*





## TL ON THE RUN 106K

ASA 4325400 | BREED PUREBRED SIMMENTAL

ACT BW 75 | ADJ WW 832 | ADJ YW 1289

Owned with May Cattle & Tree Lane Farms

CE	BW	WW	YW	MILK
8.5	2.7	79.4	116.8	18.4

**SIRE** VCL FORESIGHT  
**SECOND CHANCE 601H**  
 HPF VICTORIA B396E

**DAM** TNGL OBR FORTUNE 500C  
**EC COUNTESS 283F**  
 DSFF COUNTESS 357D

It really doesn't matter how many bulls you have in the lineup, when Bobby May calls you and says he's found the next great one, you flat

sit down and listen.

The Schlipf program is literally a pioneer in the Simmental breed and they have always had the good ones. This is one bull you had better study long and hard. When Bobby called he said "John, this bull has the rib and shape to make breds and the shape and design to sire show cattle. He's the perfect size." He used the word dense at least 10 times. Schlipf's summed it up, "One of those animals where it doesn't matter if he's standing in 3 feet of mud, it's snowing or it's 110 degrees out, he's always looks like a stud."

John made a spring run to South Dakota, we bought the bull off a video and Bobby May's stamp of approval. When John saw him he called and said, "Jeannie, this is your kind." We are pretty pumped to add him to the lineup. Big topped, big hipped, and "dense" made cattle are just our kind.



## SJF SMJ PAYROLL

ASA 3992818 | BREED PUREBRED SIMMENTAL | ACT BW 81 | ADJ WW 787

*Owned with Aces Wild Ranch, McCune, Frankenrider Cattle, Johnson Cattle & May Cattle*

A bull can be good, he can be amazing, but after that first year the proof is in the pudding and if he doesn't produce he won't sell. Good news, Payroll is literally going to make his payroll, he makes them good, and he does that consistently. His dam is considered one of Frankenrider's best cows, the broody kind that does not miss, the kind that pays the bills year after year.

Payroll is not a fluff bull, he's all there, big topped, big hipped, big footed, and powerful, he has plenty of rib and plenty of shape and he sires it in his progeny. This is a bull that will be around for years to come and prove to have a major influence on the Simmental breed.



W/C LOADED UP 1119Y

**SIRE**

**W/C BANKROLL 811D**

MISS WERNING KP 8543U

PROFIT

**DAM**

**SJF/TVSC CHARLIE**

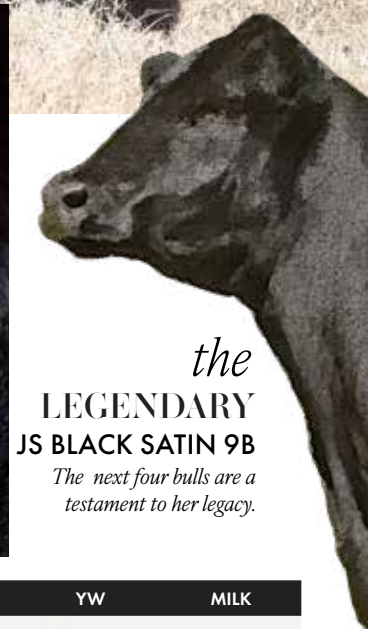
SJF CHARLIE JO

CE	BW	WW	YW	MILK
11.2	0.1	67.2	88.8	17.8

*Genoa is where we  
bank, it's who we  
TRUST*

CERTAIN PEOPLE AND CATTLE  
HAVE PLAYED A HUGE ROLL IN  
GETTING US TO WHERE WE ARE.

*Owned with Haugh Simmentals, Maple Lane, Schaeffer Show Cattle, St. Germain Simmentals*



**GCC GENOA 2118K**

ASA 4155667 | BREED PUREBRED SIMMENTAL | ACT BW 77 | ADJ WW 836

The reports are coming in every day and Genoa is siring those calves that look good from the time they hit the ground. He offers one more dose of consistency and cow power to Bet On Red, it's the money making kind!

Genoa is homozygous polled and homozygous good. This is the only embryo that took of the Bet on Red x "Boots" mating, and there are no more of them in the tank. The genetic potential of consistency, design, power, and poise line up the stars in this mating. Take the time to watch him move...he fills in his step, and phenotypically you cannot make one any better. Then sit down and look at what both cow families top and bottom have done in terms of genetic improvement within the Simmental industry, and you simply can't find a hole. The two best cows in the Simmental breed are wrapped up in his pedigree. Udder structure, rib, pelvic width, dimension, and just the flat out front pasture kind. We bank at Genoa, Nebraska. It's where we trust our money, and that says a lot about his name.

His brothers are on these pages, his sisters are in the show runs and donor pens. This is a line of cattle that are consistently as good as we have ever had the privilege to own.

*the*  
**LEGENDARY  
JS BLACK SATIN 9B**  
*The next four bulls are a  
testament to her legacy.*

CE	BW	WW	YW	MILK
8.4	3.2	75	112.4	22.8

W/C FORT KNOX 609F

**SIRE** W/C BET ON RED 481H  
W/C ANGEL 7113E

MR HOC BROKER

**DAM** JS BLACK SATIN 9B  
JS FLIRT A-WAY 59Y

# GCC NEW CALIFORNIA 131J

ASA 3977997 | BREED PUREBRED SIMMENTAL | ACT BW 88 | ADJ WW 790

*Owned with Osborn Cattle*

W/C LOADED UP 1119Y

GEFF COUNTY O

SIRE

DAM

JS BLACK SATIN 9B

RUBY NFF RHYTHM 475B

MR HOC BROKER

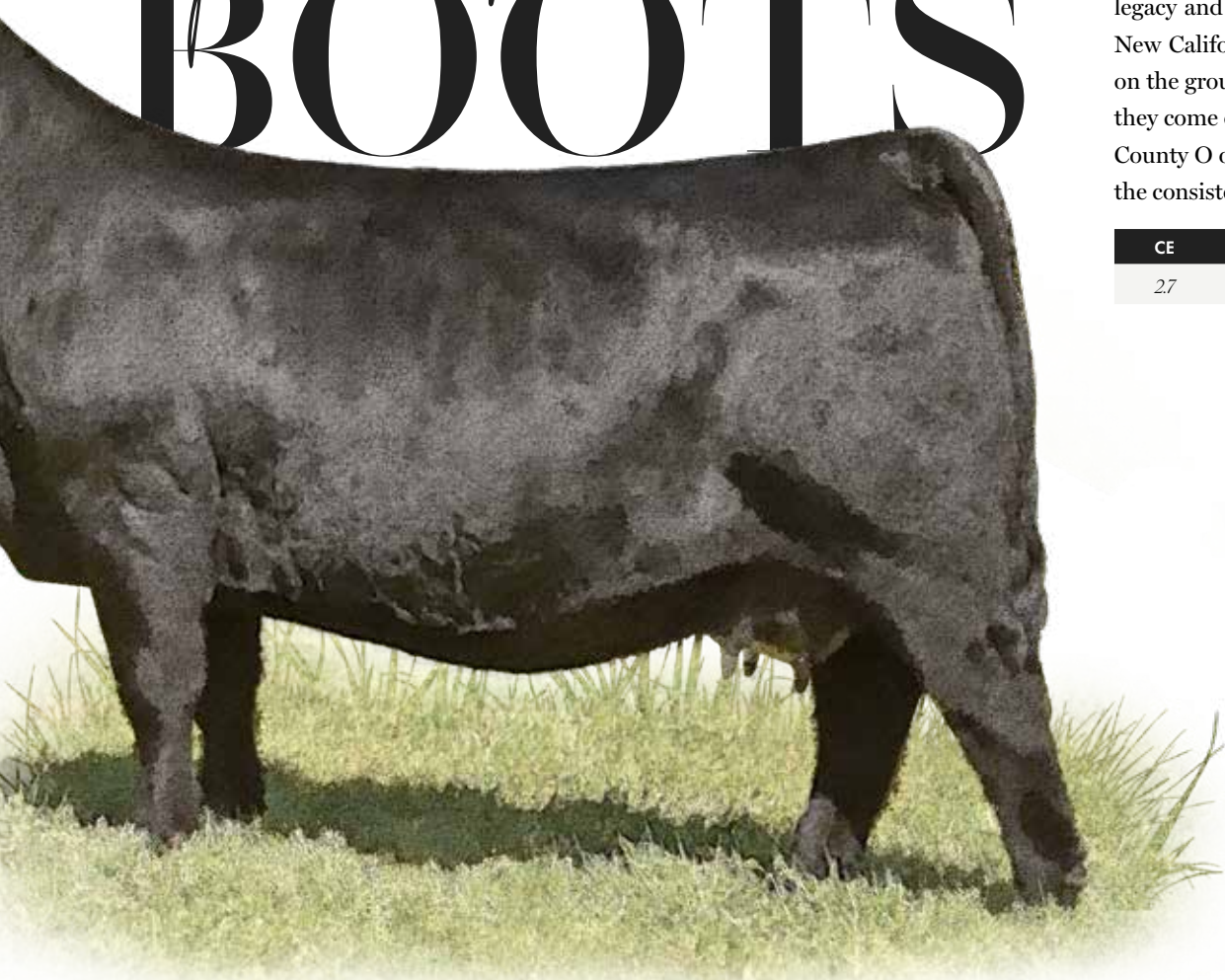
JS FLIRT A-WAY 59Y



John and Bobby May both grew up raising cattle in Wisconsin. The May family lived on County O road and the Griswolds were on New California road. The history runs deep, years and miles later they are still good friends and they still rely on each others knowledge of what is going on in the cattle world. Bobby found County O and we are super blessed to be a part of him, it was only fitting that we named the best son we have raised out of the old bull to correspond with the history and nostalgia of his great sire.

New California lines up some of the most prolific pedigrees in the industry. You want cow power, he has it bred as deep as you can make one, masculine bulls you say? This is a bull that will make them. We stand behind the power, the legacy and the next generation of what New California can do. We have calves on the ground, they come out stout and they come out good! He sires much like County O on frame score and look with the consistency and power of Boots.

*The power of*  
**BOOTS**



CE	BW	WW	YW
2.7	4.9	71.9	106



*Alm*

## GCC BOLD MOVE 136J

ASA 3968329 | BREED PUREBRED SIMMENTAL | ACT BW 77 | ADJ WW 809

*Owned with 3N Cattle*

The first set of Bold Move calves are on the ground, they are powerful, big boned, and have the consistency of SAM and Boots bred deep into their pedigrees. He has as many sisters in the donor pen as any cow family we own, they produce, their daughters produced, they hailed from consistency and they pass it down through the generations. If you are breeding for cattle that have the hip, shape, power and look that you thought was lost, use a cane of Bold Move, he is the kind

CE	BW	WW	YW	MCE	MILK	STAY	REA	API	TI
8.1	3.1	77.6	116.3	2.8	18.4	12.9	0.96	103.7	67.4

to change a program, to make donors and replacements, with the masculinity and performance to produce herd bulls

I was once told if you love a cow, replicate her through her sons. Bold Move is the kind of bull that can do just that. He is a game changer combining two of the most influential purebred animals not only in our program but the entire Simmental breed. With the passing of both Boots and SAM this is a pedigree that brings their legacy together in one productive, functional, and powerful made individual.

W/C RELENTLESS 32C

**SIRE**

**JSUL SOMETHING ABOUT MARY 8421**

JBSF PROUD MARY

MR HOC BROKER

**DAM**

**JS BLACK SATIN 9B**

JS FLIRT A-WAY 59Y

*GETS*  
**bold** *results*



## GCC CHASE THIS 2115K

ASA 4173668 | BREED PUREBRED SIMMENTAL | ACT BW 77 | ADJ WW 809

*Owned with Cotie Brothers Show Cattle*

This is a mating that you can't help but get excited about! Powerfully made, huge footed, big topped, big scrotaled, solid made, and he flat out moves out with authority. You could build an entire program around Chase This. If you love a cow, breed to one of her sons—it is the quickest way there is to replicate her. Maternal sisters are in the show string and the donor pen, they are the kind that make great ones time and again! Breed with confidence!

**BELOW** Maternal Sisters, Daughters of "Boots"



CE	BW	WW	YW	MILK
3.7	5.5	74.5	105.8	15

**SIRE** PROFIT

WS PILGRIM H128U

WAGR PANARAMA 204Z

**DAM** JS BLACK SATIN 9B

MR HOC BROKER

JS FLIRT A-WAY 59Y

# GCC NEXT generation 3105L



SCC SCH 24 KARAT 838  
**STAG GOOD TIMES 201 FT** *SIRE*  
 SCC SCH PHYLIS 6104  
**JS BLACKSATIN 9B** *DAM*  
 MR HOC BROKER  
 JS FLIRT A-WAY 59Y

CE	10
BW	21
WW	718
YW	110.5
MILK	221

ASA 4325256 | BREED 1/2 SIMMENTAL | ACT BW 80 | ADJ WW 686

Of anything profitable we have found in our program it would be the consistent females, those that do not miss, that make good ones no matter how they are crossed. This was one of the final matings we had on Boots before we lost her, Good Times, the bull that has proven himself time and again in the Angus world just moved into the elite circle of Simmentals. Elite pedigree with an elite individual, and in enters Next Generation.

Good Times x Boots, 1/2 blood Simmental, from two pedigrees in our program that have never settled for mediocre. Feet, bone, structure, dimension and look all combined with proven consistency. New Generation keeps getting better with each passing day, and this is a bold statement. He comes out true and high on the top side of his shoulder, while maintaining the right angle to his shoulder and transitioning that back into a huge robust center body, all with a perfect hip and hind leg design. A full sister to him lead off the open division of the Classic, this is a powerful pedigree jump on for the Next Generation.



**ABOVE** GCC Lexington 3102L  
 Sold for \$30,000 in the 2023 Griswold Classic





## GCC MASTERMIND 2104K

ASA 4173692 | BREED PUREBRED SIMMENTAL | ACT BW 85 | ACT WW 636

*Owned with Richards Cattle*

His was the mother that was always just a little “too much” in the show ring, you know the kind, the one they call a donor because she’s powerful made, big bodied, has muscle, shape, and you just fall in love with, the one that gets beat by the elegant, flat made ones.

Those are the kind that make herd bulls, they make donors, and they are the kind we **LOVE**, to show them, to breed them, and to flush them! These are the kind the industry as a whole needs more of. Relentless x Mittens (Loaded Up x Boots (Broker)) the Boots legacy, great cattle make great cattle. A full sister to Mastermind won Denver and was Reserve at OYE for Maggie last year. This bull has enough play on just how he’s bred on paper that you should like him, and when you see him in real life, you will soon realize that the daughters of Boots are going to continue the legacy of their great dam in making the top of the pen kind. He is big legged, powerful made, good structured, and flat out nice.

**RIGHT** Mastermind Daughter

CE	BW	WW	YW
9.6	2.7	72.7	100.4

**SIRE** YARDLEY UTAH Y361  
**W/C RELENTLESS 32C**  
 MISS WERNING KP 8543U

**DAM** W/C LOADED UP 1119Y  
**GCC RIOSOFMERCEDES 8243F**  
 JS BLACK SATIN 9B



# winc all right



I just got a text from Jaecke, “Everyone, and I mean everyone that has used All Right, are absolutely loving them! They come easy, have body and look.” Our best bull so far this year is a All Right x Loaded Up x Broker and he is as good as it gets. You always wonder if a bull is going to hit, All Right smacked it out of the park. We have had as many calls on his calves that have hit the ground as any sire we own.

All Right, is an outlier in every facet of this industry. We hear talk every single day of genomic predictions, our one requirement at Griswold cattle is that the real world data and cattle visual appraisal match the cattle. Last year Keith Lambright and G- bought what we felt was the top female out of the Windy Creek program, a full sister to this great sires dam, we bought her because she was the right kind, good udder, good feet, good looking, you know the

WS ALL-AROUND Z35

**SIRE** OMF EPIC E27

OMF TIME LESS B100

W/C FORT KNOX 609F

**DAM** WINC HOLLIE

KAPPES SADIE T635 Y302

CE	BW	WW	YW	MILK	API	TI
12.9	-0.5	85.6	123.5	27.8	136.6	85.3

ASA 4100635 | BREED PUREBRED SIMMENTAL | ACT BW 88 | ADJ WW 806 | ADJ YW 1454

*Owned with Maple Lane Farms & Windy Creek*

**HETERO BLACK / HOMO POLLED**

kind, the one you want in the donor pen. She hails from the great Kappes Sadie T365 that has proven time and again that she consistently makes the sale topping kind, and consistency is key to profitability. All Right is a curve bender, a cow maker, he has the proven genetics, he has a balanced genetic profile and he’s the kind to take your program to the next level.

# CLRS GUARDIAN 317G

ASA 3563436 | BREED PUREBRED SIMMENTAL | ACT BW 72 | ADJ WW 723

*Owned with Joel Denio Cattle, Will Morris Cattle,  
Clear Springs Cattle & Maple Lane Farms*

We always said if we ever got in the number bull business, they had to be a good bull first and numbers second. We have never put focus on numbers we have always paid attention to the things that make cattlemen money upfront. John is in the phase of life where he wakes up at four and can't sleep, I haven't got to that phase yet, but he wakes me up to tell me what he's found. Four AM is his time to look at all the catalogs and papers. He ran across Guardian and was intrigued to say the least. CRLS Guardian has a huge spread with a -2.2 bw to a 156 yw while still being in the top 1% for marbling, API, and TI he is a trait leader across the board in every measurable number. John liked him, the plus was Guardian is the top number bull in the entire nation, watch his video, he's not a glorified numbered Angus, he has MUSCLE, power, and

HOOKS SHEAR FORCE 38K

**HOOK'S BEACON 56B**

SIRE

DAM

**CLRS ALWAYS XCELLENT**

HOOKS ZAFIRAH 41Z

MCM TOP GRADE 018X

HOOK'S XCELLENCE 87X

look. The Simmental breed was meant to add power to your cow base, you don't have to compromise if you want to use a bull with an impeccable genetic profile.

Scheifelbein in Minnesota sold 20 Guardian sons that averaged \$7,000 and TSN Simmentals in South Dakota sold a Guardian son to Werning Cattle for \$37,000.

Guardian is a mature bull, there is no fluff to him. He is huge footed, solid good toes that point where they should, bone, substance, and powerfully made. The way the numbers read he ought to make you a heck of a set of replacements and the steers will feed like a dream. He has proven he can make bulls that demand a premium on a consistent basis.

CE	BW	WW	YW	MCE	MILK	STAY	MARB	BF	REA	API	TI
15.7	-2.4	100.2	150.8	9.9	32.1	22.7	0.87	-0.0038	1.28	206.9	116.5



Griswold Cattle is a seedstock operation but we see all aspects of the industry. We raise females, we produce bulls and we feed cattle in the feedlot, no one ever said a steer that hung a good carcass had to be ugly. We have hand selected, hand picked, and hand plucked those bulls that have the numbers but maintain that look, maternal, and power that we not only like, we demand. It's more than numbers, it's about common sense. "Maternal is more than milk, carcass means more than marbling, and performance means more than just pounds weaned" We have selected for the whole picture, the cow base and the numbers, if those two can't coincide then we have a huge problem within this industry.

Griswold Cattle thinks far too often the female that goes back into the herd is left behind, the part that makes them money for the long haul. We are all about the end result of good beef on consumer plates but with the profit margins so small for the cowmen and women themselves those traits that bring profit to your bank account are what we care about and select for first and foremost. Griswold Cattle is always about the entire picture, you'll be pleased when you view the "number" bulls in this lineup, they come from cow families bred deep with maternal quality, the numbers are a plus. Your cow base will always come first, you have our word to never deviate from that.



## THSF LOVER BOY B33

ASA 2983443 | BREED PUREBRED SIMMENTAL | ACT BW 70 | ADJ WW 876

Owned with Gib & Denise Yardley

Lover Boy, I don't think any of us realized the ride he would take us on. He is the go to calving ease sire in the Simmental breed, they come easy, they grow, and they look the part. He makes the kind of cattle that hit your replacement pen, turn out his sons as herd bulls, and make future donors. Good cattle make good cattle and he is no exception. His daughters and son's have been sale highlights across the country, he has been used on some of the best donors the industry has, and he's made high dollar cattle.

It is pretty amazing when a first calf heifer's calf can stand in the

CE	BW	WW	YW	MILK	API	TI
12.5	0	846	120.2	30.2	148.8	90.5

**SIRE**

CNS DREAM ON L186  
HTP/SVF DURACELL T52  
HTP SVF HONEYDEW

**DAM**

SVF/NJC BUILT RIGHT N48  
RP/MP RIGHT TO LOVE 015U  
PCC QUEENS VALENTINE R9

winners circle wearing purple but even better than that is when that female comes into the calving pen, good uddered, good footed, solid made, and can lay down and have her own calf. Lover Boy daughters have substance, they are quality cattle and they will make you as good of a set of females and bulls as any in this book. They have stood as supreme champions in more shows than one and they will stand in the donor pens.

Lover Boy is more than a calving ease sire. Don't just breed for calving ease, breed for quality, breed for added value, breed to Lover Boy.

*bulls that rank*  
**HIGH**  
ON THE CALVING-EASE METER



## ROCKING P PRIVATE STOCK H010

ASA 3775641 | BREED PUREBRED SIMMENTAL | ACT BW 71

*Owned with Rocking P, Red River Farms & Circle M Farms*

Private Stock will sell as much semen as perhaps any Simmental bull in the breed this year, for one reason, people like his calves. He can be used on heifers and cows alike. The numbers actually match the bull and represent the form and function from top to bottom. He's quality, he's consistent, and that's what matters to all of our bottom dollars.

Private Stock is big footed all the way around, no funky toes. Big scrotaled, for those in this business for the long run you know how important that is. His granddam and dam are good uddered, productive females that keep their flesh and have the eye appeal, dimension, and look that demands a premium. Every female on the bottom side for generations has worn purple under the bright lights from Louisville to Denver. When you talk to the Phillips family they will tell you this cow family has done for them what 066 has done for ours. They make cattlemen's cattle. Read that again, they aren't just fluff females that win shows, they are the kind that you want to replicate.

**USE WITH CAUTION ON HEIFERS**

CE	BW	WW	YW	MILK	API	TI
14	-0.3	72.7	107	14.3	141.9	83.5

**SIRE**

**WLE COPACETIC E02**

HPF QUANTUM LEAP Z952

CMFM JOY 02ZB

**DAM**

**RP/MP BUILT TO LOVE A021**

RUBYS WIDE OPEN 909W

RP/MP BUILT TO LOVE 076W





# calving EASE

**SIRE** WLE COPACETIC E02  
**ROCKING P PRIVATE STOCK H010**  
 RP/MP BUILT TO LOVE A021

**DAM** IR IMPERIAL D948  
**BAR CK MS D948 9024G**  
 BAR CK MS 1006X 6266D

CE	BW	WW	YW	MILK	API	TI
17.2	-2.3	698	1076	15.7	1677	90.1

Bar CK is known for high numbered Simmentals, we got a phone call that they had a lead off heifers that didn't fit the typical phenotype of a high numbered female, we bought her, and we bred her to the bulls we loved. We got a Unicorn that is the cowman's kind of bull, he's rugged, he has bone and substance, power, and design, he is sired by one of the hottest Simmental sires in the Nation and he's fixing to set the world on fire. CED of 17, BW of -2.5 (actual BW is 61) and an API of 167! Not to mention his MARB is also in the top 10% of the breed! His scan data reflects that with a 19in REA and 6.63 IMF, you don't find cattle that look like this have a number profile that reads like Night Owl's. You haven't seen the last of this upcoming herd sire, he's a different kind if you like the look with numbers, jump on the bandwagon.

## GCC NIGHT OWL 3104L

ASA 4284092 | BREED PUREBRED SIMMENTAL  
 ACT BW 61 | ADJ WW 827 | SCROTAL 38 | ACT REA 19.1 | %IMF 6.63



**ABOVE** Bar CK Ms D948 9024G  
 Dam of Night Owl

# LIVIN *the* DREAM

When you stop breeding for a percentage and start breeding for good cattle you are going to jump leaps and bounds in the overall look, design, and performance of your cow base. Living the Dream is flat out good cattle. The Total Recall x Whiskey daughter sold out of the Classic to the elite cowman Jim Cowan for \$30,000, good cowmen know how to pick them, and as you can see know how to breed them.

Wayne and Barb have a program, a marriage, and a cow base we all admire, good people that's passion falls with good cattle, they bought Doodle Bug from Cowan's, a no miss kind of cow that has proven time and again to produce high dollar cattle. Wayne called John and said, "This is the best bull Barb and I have ever raised," if you know Wayne and Barb you know they have raised more than a few elite bulls, that is a bold statement, but Living the Dream is bold made. That list of people grew. When people like Keith Lambright, Schaeffer & Tice, and Kent Jaecke say we need it on a bull, we sit down and listen.

ASA 4305557 | BREED 5/8 SIMMENTAL | ACT BW 89 | ADJ WW 703

*Owned with Maple Lane Farms, Schaeffer/Tice & Ohlrichs*



HPF QUANTUM LEAP Z952

**WLE COPACETIC E02**

CMFM JOY 02ZB

SIRE

DAM

**COWAN'S DOODLE BUG 203D**

203U (TOTAL RECALL X WHISKEY)

MR HOC BROKER

CE	BW	WW	YW
10.7	1.4	69.7	102.1



## DWYER WALLSTREET 115J

ASA 3914030 | BREED PUREBRED SIMMENTAL | ACT BW 72 | ADJ WW 872

*Owned with Vanhove Cattle*

**SIRE** MR HOC BROKER  
SVF STEEL FORCE S701  
JM BF H25

**DAM** NPC MISS JULES D628  
ZEIS WIDE TRACK A043  
NPC MISS LUCKY GAL Z120

CE	BW	WW	YW	MILK
8.1	2.7	73.7	106.2	18

As Robbie Vanhove put it, “there **HAS NEVER** been a purebred Simmental bull that is this flexible, loose spined, with a neck that can reach to the nosebleed seats. Opportunities like this come around about as often as the marrying type. You don’t even know how much I like this bull! We already have a large sample of incredibly hairy, soft legged, soggy bodied replacement females that will **WITHOUT A DOUBT** leave their impact on the club calf and purebred industries alike.” The one thing we know, Broker flat out made amazing cows and we’ve been on the hunt for a son to take the ole man’s place, boys and girls, climb on board! That sums up the bull about as perfect as anything we can say. Robbie has a set of females on the ground that he claims are as good as anything he’s raised, that’s a bold statement from a great cowman that knows how to breed quality.





# COUNTY O

ASA 3289219 | BREED PUREBRED SIMMENTAL | ACT BW 75

*Owned with Bob May, Brock May, Osborn Cattle*

One sire that has been used as heavy as any G- bull across the Nation is County O. The cattle out of him are first class and he has proved he has what it takes to be a sire that can be used year after year. He has made sale toppers, show winners, and females in the donor pen. It isn't often that you find a bull that looks like a 1/2 blood in a purebred package.

We see a lot of cattle and travel thousands of miles to find them. Regardless of what breed you raise this is a bull that is the right kind. He's moderate framed, big hipped, stout through that lower 1/3, has all the rib you could want and still is able to do that with the front end that you simply do not find in the Simmental world.

**BELOW** County O Daughter



REMINGTON LOCK N LOAD54U

*SIRE*

**W/C LOADED UP 1119Y**

AUBREYS BLACK BLAZE III

AJE/PB MONTECITO 63W

*DAM*

**RUBY NFF RHYTHM 475B**

RHYTHM 418P

CE	BW	WW	YW
3.3	4.1	77.1	113.7



*Mineral Point*

W I S C O N S I N



# CONLEY GCC SHOCKER

ASA 3656879 | BREED PUREBRED SIMMENTAL | ACT BW 82 | ADJ WW 775  
 Owned with Bloomberg Brothers & Craig Sand Family

Every year we sort off a group of the stoutest, deepest bred heifers to start the Classic with, these are the females that set the tone for the entire sale. 9 out of the 10 in the lead off pen this year were Shocker daughters.

At the end of the day, they are solid cattle. Consistent time and time again, more important, consistently good. You will be hard pressed to find a 3/4 blood bull that is as sound, big hipped and massive that keeps such a loose structure. He has ample bone and comes down on a big solid foot with all four feet pointing the right way and hitting the ground right where they should.

It does not matter if it is a set of replacement heifer or sale bulls, you will fall in love with the Shockers. If you are breeding for **GOOD, SOLID**, cattle and aren't just in the Simmental purist group that only breeds for a percentage, you better breed to this bull. He works on Simmy, crossbreds, and Angus females all day long. Consistent but even better, consistently good!

CE	BW	WW	YW	MCE	MILK	STAY	REA	API	TI
14	1.4	77	117.2	5.3	17.8	12.8	1.01	123	75.7

**SIRE** YARDLEY UTAH Y361  
**W/C RELENTLESS 32C**  
 MISS WERNING KP 8543U

**DAM** YARDLEY HIGH REGARD  
**JBSF PROUD MARY**  
 BROOKS STEELMAGNOLIA



RIGHT Shocker Daughter

# RECKONING

ASA 3553633 | BREED 3/4 SIMMENTAL | ACT BW 87

Owned with Berlowitz Cattle,  
Elmore Cattle Services & Forgy Cattle

YARDLEY UTAH Y361

**SIRE** W/C RELENTLESS 32C

MISS WERNING KP 8543U

FBF1/SF IGNITION

**DAM** RWA KRISHA-ET

CHAMPION HILL BLACKBIRD 8003

CE	BW	WW	YW
8.6	2.2	66.4	86.1



## ABOVE

\$230,000 Reckoning daughter sold by Pembroke Cattle



This past year you have seen Reckoning bred to these top donors across the Nation and seen the resulting progeny, they are solid, good cattle all day long. This is a bull I have seen from the time he was a calf to being a mature bull, he's the kind you wish you had a hundred to turn out on cows, he is all there. He has style but he couples it with ruggedness, he makes them pretty, but he puts the rib and power behind the structure. You want the secret to good purebred cattle, breed them to 3/4, breed them to those 1/2 bloods. They are better cattle, that bottom side of this pedigree made them as good as they get. He is big footed, big scrotaled, big topped, and he will make you turn around and look twice! You will not regret this pedigree in your cow base, we guarantee it.

# UNRELENTING

ASA 4320261 | BREED PUREBRED SIMMENTAL | ACT BW 79

YARDLEY UTAH Y361

**SIRE** W/C RELENTLESS 32C

MISS WERNING KP 8543U

HTP SVF IN DEW TIME

**DAM** TJSC DIAMONDS DESTINY I34C

KLS DIAMOND W516

CE	BW	WW	YW
9.7	3.7	73.9	98.6



A maternal brother to Coping with Destiny out of the dominant show winning sire, Relentless! When our good friend Wade Rogers called and told John what he had, we jumped at the chance to be a part of it! Unrelenting has some wild pieces to tie into, if you are looking for that next level, elite show heifer maker! He has such a wild, hard to find look up front with the way his neck comes out of his blade, and then blends back into a flat shoulder and explosive rib cage. Unrelenting is big hipped with an awesome hind leg, he has that presence about himself that sets him apart from his contemporaries and you will find him if he's in a pen of 1 or 100. He knows how to move and has that look of elite quality in a hard to make purebred package!

A full bald face that grabs your attention and all parts to make those highly sought after, hard to make purebreds with a half blood look! Tie into one that is bred for the purple and proven with an incredible pedigree and cow family behind him!



# LOADED UP

ASA 2654155 | BREED PUREBRED SIMMENTAL | ACT BW 83

*Owned with Fenton Farms, Billy Wolf, Charlie Warner, Werning Cattle & Canadian Sires*

**SIRE** REMINGTON ON TARGET 2S  
REMINGTON LOCK N LOAD54U  
BAR 15 MISS KNIGHT78E-51G

**DAM** 3C MACHO M450 BZ  
AUBREYS BLACK BLAZE III  
BLAZE IV 1P

CE	BW	WW	YW
11.7	3.4	78.8	108.7

After a bull has been used heavily his influence is seen full circle and the true test of time comes in his daughters ability to produce themselves. You will see people go back and use this bull again because of just how good the females sired by him are. Good uddered, big bodied, easy doing, solid cattle.

Loaded Up brings consistency and look to the table. We have mated him to all kinds of cows from the good ones to donors and he has the ability to click. He makes females and has made promotion bulls across the country.



ABOVE Loaded Up Daughters



# ON THE MARK

ASA 3210989 | BREED PUREBRED SIMMENTAL | ACT BW 89

*Owned with Brad Smith, Reimann Ranches, Nolan Ferguson, Swanson Cattle & Joe Phiffer*

**SIRE** REMINGTON LOCK N LOAD54U  
W/C LOADED UP 1119Y  
AUBREYS BLACK BLAZE III

**DAM** HTP SVF IN DEW TIME  
JASS SABLE` S TIME 53X  
RSF SABLE 1223R

CE	BW	WW	YW
11.7	3.4	78.8	108.7



ABOVE Daughter of On The Mark

In all reality it takes a few years to realize the power and the potency of a sire. On the Mark is going to be a go to bull for the solid reason that the cattle work, they are the real deal, and the money-making kind. Daughters have been in high demand across the country, at Robbie VanHove's sale one brought \$21,000 to Harker Simmental. The cattle are consistent, good looking, powerful and the right kind on structure and size. We get comments every day on how much people love their On the Mark daughters. Consistency is huge in this industry, it doesn't matter if they can make one good, can they make 20 good or 30 good? We want a bull that is going to work no matter how you cross him. On the Mark is just that kind, he pulls in the potency and consistency of the top and bottom side of his pedigree.

# FAMILY TRADITION

ASA 3336318 | BREED 1/2 SIMMENTAL | ACT BW 85

Owned with Reimann Ranch, Owen Brothers,  
RJ Cattle & Werning Cattle

GAMBLES HOT ROD

**SIRE** SILVEIRAS STYLE 9303

SILVEIRAS ELBA 2520

WAGR DREAM CATCHER 03R

**DAM** MISS WERNING KP 8543U

MISS WERNING 534R

CE	BW	WW	YW
16	-1.6	51.1	75.8



ABOVE Miss Werning KP 8543U, Dam of Family Tradition



Eight Family Tradition heifers in the RJ Cattle Company 2021 online sale averaged \$27,938. This is a bull that few have known about but that's fixing to come to light. He has the style, literally of "Style" and the consistency and potency that comes from the great 8543U. This is a mating that has the potential to set the percentage cattle world on fire.

We have enough faith in both these pedigrees that we've worked hard to make sure they are in our lineup. Everyone should have the chance to own in on the best genetics, to afford the top quality. Here is as good a chance as any!

# STEEL FORCE

ASA 2340262 | BREED PUREBRED SIMMENTAL | ACT BW 82

Owned with Ratcliff Ranches

NICHOLS LEGACY G151

**SIRE** CNS DREAM ON L186

CNS SHEEZA DREAM K107W

PVF-BF BF26 BLACK JOKER

**DAM** SVF SHEZA BEAUTY L901

SVF SHEZA LADY J900

CE	BW	WW	YW
11.7	3.4	78.8	108.7



*the sire of* **SIRE** THE BULL WHO MAKES DONORS.

We could fill up pages of Steel Force daughters. Our whole program has been centered around Steel Force for good reason. Steel Force daughters have won every major show in the Nation. Herd sires and donor cows wear his name at the top of their pedigrees across the country. We know how Steel Force daughters work, how they produce and his ability to transmit power and consistency down through the generations. We firmly believe Steel Force has had as much impact on the breed and industry as any bull in history. Steel Force's story is still being told through his daughters, granddaughters, sons, and grandsons. The power of this great sire is evident. The true test of a bull is to sire a son as good or better than himself, Steel Force has done this several times over, Broker and Whizard are two of the top female producers in the Nation. He has sired as many great sons as any bull in the industry, EVER. He will go down in history as one of the greatest bulls of all time.



**GCC ETR REAL TIME G380**

ASA 3691435 | BREED PUREBRED SIMMENTAL  
 PROFIT X HCCO COUNTESS 127C  
*Owned with C4 Land & Cattle*



**GCC MOMENTUM 142X**

ASA 2568769 | BREED PUREBRED SIMMENTAL  
 ZKCC CHOPPER 844U X SVF SHEZA BEAUTY L901  
*Owned with Brad & Kevin Holt*



**GCC ANDERSON BEAN**

ASA 3517845 | BREED PUREBRED SIMMENTAL  
 W/C LOADED UP X BOOTS  
*Owned with Lowe & Martin*



**ZKCC CHOPPER**

ASA 2453413 | BREED PUREBRED SIMMENTAL  
 SVF STEEL FORCE X MS MEYER 31S1  
*Owned with Kraenow Cattle,  
 Top Sires & Phil Lautner*



**FBF1 COMBUSTIBLE**

ASA 2588018 | BREED PUREBRED SIMMENTAL  
 SVF STEEL FORCE S701 X LAZY H BURN BABY BURNR34  
*Owned with Forest Brook Farms*



**TJSC HAMMER TIME 35D**

ASA 3185062 | BREED PUREBRED SIMMENTAL  
 MR TR HAMMER 308A ET X TJSC SO SWEET 104X  
*Owned with the Hammertime Syndicate*



**GCC KMJ HUSKER**

ASA 3542175 | BREED PUREBRED SIMMENTAL  
 PROFIT X KMJ MISS COWGIRL 264  
*Owned with Paul Gross, Bob May & Kelvin Jorgenson*



**HOUSTON X01**

ASA 2537200 | BREED 3/4 SIMMENTAL  
 DHF JADES DREAMWORKS X STCC RUBY P172  
*Owned with Rolling Hills Farms*



**GCC GUN SMOKE 100G**

ASA 3638334 | BREED 1/2 SIMMENTAL  
 MR HOC BROKER X MISS CHILL 1829  
*Owned with Randall Schurring*







# Angus





## STAG GOOD TIMES 201 ET

AAA 19923328 | BREED ANGUS | ACT BW 85 | ADJ WW 685

*Owned with Prairie View Farms, Bob May & Stagemeyer Cattle*

Good Times proved this last year that he is the king in the Angus arena of making cattle that have that extra look, extra dose of good, extra dose of special. His son's and daughter have been highlighted across the country, they have topped sales, won shows and proven there is a level of consistency that is difficult to replicate.

His dam was Reserve Division at Louisville and 4th overall as a calf at Aksarben, many time breed champ and swept her fair share of jackpots. That's pretty sweet but the best part is she is proving that she is a wicked donor cow that will produce the great ones every time. Good Times not only replicates his great dam, but he also takes it to an entirely new level. Breed him to Angus, or cross him, he'll work. He not only makes them good, he makes the kind that sell high.

CED	BW	WW	YW	MILK
8	1	.52	89	23

**SIRE** SCC TRADITION OF 24  
**SCC SCH 24 KARAT 838**  
 FCF PROVEN QUEEN 419

**DAM** SILVEIRAS STYLE 9303  
**SCC SCH PHYLLIS 6104**  
 SCC PHYLLIS 052



**RIGHT** Good Times Daughters

# *rw* timeless 304



**SIRE** SCC SCH 24 KARAT 838  
**SIRE. STAG GOOD TIMES 201 ET**  
 SCC SCH PHYLLIS 6104

**DAM** DAMERON FIRST CLASS  
**RW FIRST CLASS SANDY 503**  
 KNC CABIN CREEK SANDY 804

We have got countless pictures and videos of Good Times son's this fall, there are a lot of good ones out there, but the one we tied into had all the shape, the design, rib and power that we want in our own cow base. Timeless is just what his name implies, pedigree's deep with history and cow power bred down through the ages.

Cindy and Brad Worthington are foundation Angus breeders, Brad's dad Roger is an Angus icon and was at the top of the Angus game for years. Good cow people tie into good cattle and Timeless is no exception, he is the cowman's kind. Angus cattle don't need to be frail, there are bloodlines that have the power, the stoutness, the shape, and the bone to produce the kind of cattle that you don't just like, you love. Timeless has the look of a female maker with the ionic, famous, and most importantly consistently good Cabin Creek Sandy 804 right on the bottom of his papers. He has the mass and masculinity to make bulls, big scrotaled, and flat out made just like you want them. We aren't the only ones who love him, he was 2024 National Western Junior Calf Champion. He's not just show cattle good, he's good cattle.

CED	BW	WW	YW	MILK
-1	4.7	78	120	15

*Owned with Bar S Ranch, Brad & Cindy Worthington*

**AAA** 20716101 | **BREED** ANGUS | **ACT BW** 74 | **ADJ WW** 913



**LEFT** RW First Class Sandy 503

# BOYD BELLRINGER 2010

AAA 20363001 | BREED ANGUS | ACT BW 70 | ADJ WW 929 | ADJ WW 1483  
 Lindskov's LT Ranch & Boyd Beef

I don't want the flat one's, the ones that come with a set of numbers but leave out the importance of the cow. I don't just want the packer to be who gets a premium, if I am going to take the time to try and improve my cow base, I want to do just that. I want good udders, longevity, eye appeal, I want power, a big foot, big top, and some rib, shape, and dimension, I want it all because those things are what makes up my bottom dollar, if the numbers are good, well that's a bonus! I want the cowman's kind, and Bellringer is just that.

Bellringer is a breed changer, a difference maker that offers reliable and predictable maternal genetics from a cow family that does everything right year in and year out! He combines "The Right Kind" of phenotype with phenomenal performance and bred-in carcass merit with perfect feet and a superb disposition. Big-time figures in his EPD profile which combines excellent genomics with unsurpassed individual performance.



ABOVE Boyd Rosetta 0007, Dam of Bellringer

*He is the accumulation of*  
**130 YEARS**  
 OF DEDICATED ANIMAL BREEDING

G A R ASHLAND  
**GARHOMETOWN** **SIRE** **DAM** DEER VALLEY GROWTH FUND  
 CHAIR ROCK SURE FIRE 6095 **BOYD ROSETTA 0007**  
 BOYD ROSETTA 4302

CED	BW	WW	YW	HP	MILK	DOC	CLAW	ANGLE	CW	MARB	RE	\$M	\$B	\$C
7	2.2	88	156	13.7	24	26	.41	.37	77	1.04	.99	73	198	330





# BIPARTISAN

AAA 19871908 | BREED ANGUS  
 ACT BW 72 | ADJ WW 867 | ADJ YW 1527 | ACT REA 19.2 | ACT IMF 5.68

Owned with Blacktop Farms

It's easy to get color blind on both sides of the isle, from pedigree, to numbers, to performance, to look. Depending on what makes your program and your world go round, and pays your bills we would all list those in a different order of importance. At the end of the day we would argue that good cattle are good cattle. They need to be the kind that will work in different environments, and different programs, and the bottom line, they need to be the kind of cattle that make you a

**PROFIT. PERIOD.** This isn't just a side hustle, or hobby, this is your life.

We like good cattle at the G-, we strive for a certain type and kind. We got a phone call about a bull that looked like a Gold Standard but had numbers that if you were a number guru you were going to be pumped about, sure ya have. But John knew Cory Thomsen knew enough about what a great one was supposed to look like that he needed to get on his way to South Dakota. Let's just say mic drop. When John saw Bipartisan he called me and said "Jeannie, this is your kind of bull. He's a soft made, stout, big footed female maker."

If you like cattle with eye appeal, this is a bull you need to use. If you like cattle with numbers, this is a bull you need to use. Semen is froze and in the tank.

G A R EARLY BIRD

**SIRE** **GARASHLAND**  
 CHAIR ROCK AMBUSH 1018

TEX PLAYBOOK 5437

**DAM** **BLACKTOP ROSALIE 839**  
 BLACKTOP ROSALIE 536

CED	BW	WW	YW	MILK
9	1	85	149	25



## RIVERSTONE VEGAS 49H

AAA 20320127 | BREED ANGUS | ACT BW 93 | ADJ WW 795

Owned with Rosebud Cattle, Coor Cattle & 6M

The power of maternal is hands down the most valuable piece in the cattle industry there is. We all love pretty show heifers but those cows, those solid Angus cows, well ladies and gentlemen that's where the long-term profit is.

If you were at the Classic last year or got a chance to see him in denver, you saw him in living color, big footed, big scrotaled, big ribbed, big topped and just plain flat out powerfully made and the kind that says female maker all over.

Sired by Casino and out of the beautiful Coleman Dixie Erica 3372, Riverstone VEGAS 49H is the real deal. We are using him on our Style daughters and those that need a dose of big ribbed, big bodied, easy doing style while keeping performance and power in check.

We are using him heavy on our first class, style and prino daughters and he is a **OUTCROSS** pedigree to most of today's angus females.

CED	BW	WW	YW	MILK
5	21	62	112	30

**SIRE**

**KR CASINO 6243**

CFCC BLACK JACK 001

MALSONS SAVANNAH 27Y

**DAM**

**COLEMAN DIXIE ERICA 3372**

COLEMAN CHARLO 0256

COLEMAN DIXIE ERICA 1342



RIGHT Daughter of Vegas

# BRUNO

AAA 20316046 | BREED ANGUS | ACT BW 74

Owned with Buchanan Cattle Enterprises & Shane Reid



Seldom Rest Sandman had limited calves yet the ones that hit the ground were the kind of Angus cattle you want to build a cow base around. The semen is rare, you can't find it and if you do you had better be willing to pay a premium. Bruno is a son that is better than the bull himself! You don't find an Angus with this much stoutness and power very often. Bruno is a big footed, powerful ground pounder that is sure to add pounds, power, and profit to your calf crop. His daughters will be tremendous.

If you have ever had Fullback daughters in your program you know that they produce the goods time and again, add to the bottom the famed Champion Hill Georgina cow family and you have a pedigree that makes great cattle. Bruno has an awesome disposition, he's sound footed, massive rib, shape, and big boned. He was undefeated Angus in 2022 and 2023. Supreme at more shows than you can count including Agribition.

AVAILABLE TO CANADA 

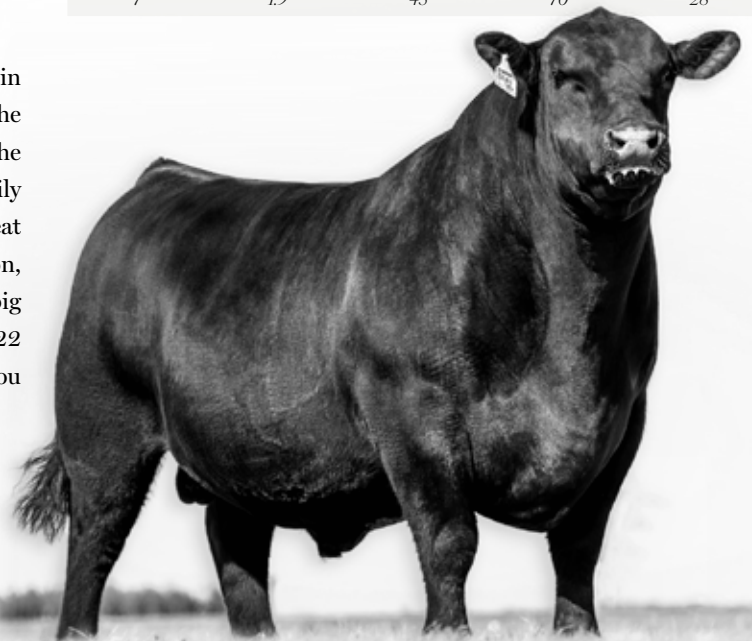
EXAR CLASSEN 1422B

**SIRE** SELDOM REST SANDMAN 6075  
SILVEIRAS S SIS SANDY 2354

CHAMPION HILL FULLBACK 380

**DAM** BUCHANAN'S GEORGINA R266  
CHAMPION HILL GEORGINA 6318

CED	BW	WW	YW	MILK
7	1.9	43	70	28





# GCC MONEY EARNED

AAA 18989403 | BREED ANGUS | ACT BW 74 | ADJ WW 913

*Owned with Bourquin Cattle, Stedje Livestock, Texas CDS Cattle, Blake Holly & Southwest Livestock*

This is a bull that is as correct as any we have ever raised. He was the high seller in our Grass to Grid Bull Sale. Money Earned has had the look and design since he was a calf. He is big footed, with solid testicular development, muscle, power, mass, body, and shape. His dam is perhaps one of the most unique things about him. She hails from one of the most prolific cow families in the industry, the great Dixie Erica 001. Generations deep in functional, easy fleshing, prolific females. He was a crowd favorite in Denver and was slapped Grand Champion Angus Bull at the legendary Fort Worth Stock Show. He won't only give you the look you are wanting but also the performance. He is as massive of a mature bull as you will find and not in size just power throughout. The calves are proving they have all the look, design, and dimension of their sire. Use with *confidence*.

EXG RS FIRST RATE S903 R3

**SIRE** **DAMERON FIRST CLASS**  
DAMERON NORTHERN MISS 3114

E&B POPATOP 2205

**DAM** **DUFF W 373 DIXIE ERICA 8137**  
DCC OL 001 DIXIE ERICA 373

CED	BW	WW	YW	MILK
-1	4.7	78	120	15

**BELOW** Money Earned Daughters





# Dr. Phil



AAA 20400918 | BREED ANGUS | ACT BW 84 | ADJ WW 696 | ADJ YW 1366  
*Owned with Vision Angus*

Cory Thomsen walked past Dr Phil in Denver and came straight to the G- tent to find John and tell him there was a bull he had to see. We were dang sure glad we listned Dr. Phil is one of those bulls that doesn't come along every day. The pedigree is intriguing and the bull in person is one that you will fall in love with. He has that eye catching correctness and eye appeal that makes good cattle stand out in the show ring and the pasture. He is the G- kind all day long.

YOUNG DALE BELIEVE 46B		COLBURN PRIMO 5153
<b>HILL VALLEY RECKONING 931</b>	<b>SIRE</b>	<b>DAM</b>
HILL VALLEY ELBINA 456		<b>SCC SCH PHYLLIS 893</b>
		SCC PHYLLIS 052

CED	BW	WW	YW
8	12	40	70

SOME THINGS NEVER GO OUT OF

# STYLE<sup>2</sup>

There are a few bulls that should never die, their legacy and potency is enough that it changes the course of the industry and the breed they are associated with. Style is that kind of bull, the king of the ring. We have used the inventory on the original Style and we are excited to open up the clone, making it price-wise available to everyone. **SEXED SEMEN AVAILABLE.**

Style daughters have won more shows in more breeds than any bull in history. You could fill up every page in this book with Champions and Supreme Champions from State Fairs to National banners, Style has produced them all, every breed and every ring across the Nation.



FAMOUS 7001  
**SIRE** **GAMBLES HOT ROD**  
 CHAMPION HILL LADY 703

TWIN VALLEY PRECISION E161  
**DAM** **SILVEIRAS ELBA 2520**  
 D A R ELBA 55

## STYLE 2

AAA 19903097 | BREED ANGUS | ACT BW 84  
 Owned with Texas CDS Cattle

CED	BW	WW	YW	MILK
5	24	49	85	17

# Fortunate SON



There is no denying that Good Times made a splash in his rookie calf crop. He made his daughters with unrivaled look while injecting added body and rear leg design that we need more of in the Angus breed. Better yet he's not just a female maker, there are plenty of son's that are going to prove their potency this coming year. Fortunate Son falls in that category.

On the bottom side of Fortunate Son's pedigree, you will see he is out of the legendary Nords Lucy 8022 that will go down as one of the most elite females to be shown by the Stagemeyer family. Supreme Overall Breeds at the American Royal, and Reserve Supreme in the Junior and Open show on the hill in Denver, Reserve at the Junior National Angus Show, a huge accomplishment in perhaps the most difficult and competitive breed in the industry. She hails from the famous 1125 who is known for making cookie cutter females with that extra look, power, and quality. Nords Lucy is the ideal size, some show cattle are too big and too raw for the real world, she isn't, Nord's are from North Dakota where cattle have to be real world, they have to be able to withstand the elements and be practical, this is perhaps the most intriguing part of this great young sire. After cementing her legacy in the ring 8022 has knocked it out of the park in production.

AAA 20522600 | BREED ANGUS | ACT BW 84  
Owned with Bob May, Stagemeyer Cattle & Rosebud Cattle

CED	BW	WW	YW	MILK
3	28	60	96	20



SCC SCH 24 KARAT 838

**SIRE** STAG GOOD TIMES 201 ET  
SCC SCH PHYLIS 6104

COLBURN PRIMO 5153

**DAM** NORDS LUCY 8022  
PVF LUCY 1125

# JUSTIFY

AAA 20192444 | BREED ANGUS | ACT BW 75

EXAR CLASSEN 1422B

**SIRE** SELDON REST SANDMAN 6075

SILVEIRAS S SIS SANDY 2354

OSU CLASS ACT

**DAM** GCC POLLYANNA 660B

GCC POLLYANNA 616Z

BW	WW	YW	MILK
4.3	59	88	34



Justify has had a standout look from the time he hit the ground. His dam is a big volumed, and big-time producer for us, we just flushed her after she's proven time and again that she has what it takes to produce great cattle. She produced Lot 102 in the Grass Grid, for \$20,000 on her first go round, a \$42,000 Money Earned heifer that sold to the Stagemeyer family. She just may be the soundest female that we own on the ranch, hits her track dead on, big bodied and awesome fronted, and most important she's productive. Justify had a 16.5 REA, with 6.77 IMF, a scrotal of 39 and all the power you could possibly want in an Angus bull.

# MOTO MOTO

AAA 19519185 | BREED ANGUS | ACT BW 76

*Owned with Osborn Cattle & Henricks Cattle*

DAMERON FIRST CLASS

**SIRE** GCC MONEY EARNED 852E ET

DUFF W 373 DIXIE ERICA 8137

DCC NEW LOOK 101

**DAM** GCC JUANADAS PENELOPE 633B

GCC JUANADAS PENELOPE 612X

CED	BW	WW	YW
9	2	63	93



If there is a bull, we are high on the older he gets it would be Moto Moto. Perhaps the most exciting part about this bull is he is a prime example of just what Money Earned is going to do! Moto Moto is a female maker! If you get a chance to see him in real life you will see just what we mean, He has all the rib, shape, and is the kind that all cattle should be patterned after. Moto Moto has the eye-catching correctness you are drawn to and the kind of power to hold your gaze. His mother is incredible, his grandam is incredible, **MATERNAL**, breed this one to crossbreds or Angus, he'll make donors.

Moto Moto scanned a 15.54 REA and a 9.28 IMF. If you are retaining your calves and feeding them out, this is the kind of bull that won't sacrifice your cow base and will still produce cattle that will perform and hang on the rail. The industry needs more cattle that are multi-functional, here's your bull!



## NEW EDITION

AAA 15459486 | BREED ANGUS | ACT BW 89

**SIRE**

**O C C GENESIS 872G**

O C C DOCTOR 940D

BLACKBIRD OF R R 1204

**DAM**

**O C C DIXIE ERICA 814G**

O C C ANCHOR 771A

O C C DIXIE ERICA 764C

CE	BW	WW	YW
4	3.8	48	73

Many things can be said about New Edition but perhaps the most important is that he produces the kind of cattle that you will keep in your cow base. If you were to ask me one bull to use on 200 head of cows to consistently change them to uniform, easy doing, good looking, and productive females your chances are pretty dang good that New Edition would be the bull of choice.

You cannot beat his daughters, beautiful udders, productive, eye catching, and easy doing. He's made as many great herd sires and donors as about any bull in the breed. Breed to mature cows only.



## JUST RIGHT

AAA 13492456 | BREED ANGUS | ACT BW 77

**SIRE**

**O C C EMBLAZON 854E**

D H D TRAVELER 6807

DIXIE ERICA OF C H 1019

**DAM**

**O C C JUANADA 709V**

COLE CREEK OSCAR 92R

JUANADA OF ROLLIN ROCK 0355

CED	BW	WW	YW
12	4.2	32	51

Do yourself a favor and put in a cane of Just Right this year. If you breed your heifers to him, it will be one of the best decisions you will make both for your view and your pocketbook. When you would walk up the bull alley at Stillwater you could see Just Right standing in his run, you could tell it was him from a mile away. He was a dead-on carbon copy to his picture. You can't truly appreciate this bull until you have seen his daughters in production. **PERFECT** udders and teat quality, with a look that is consistently stamped out pretty. He stands as one of the most influential sires in our lineup. Just Right pops up a lot on the bottom side of our pedigree's, they are some of our favorite and most powerful cows.

# Calving *ease*

First calf heifers are something everyone in the business knows that getting a nice small calf has so many advantages. You have a live calf, that gets up and sucks (if they don't do those two things, does anything else matter?), a first calf heifer that will breed back quicker because she's had no trauma, and you get a replacement female that is a great cow with calving ease bred into her pedigree. That said, you don't have to be breeding your heifers to a bull just because he is easy calving, they can and should be marketable after they are born. Vigor, live calves, eye appeal, and maternal, it's not a one day thing. If it's the steer calves that cross the scales, the heifer calves that stay in your program, or the next great marketable bull you, those first calf heifers need to be able to make you a profit from that first calf and we have a lineup of calving ease bulls that has the ability to do just that!



# exar bedlam

AAA 20476644 | BREED ANGUS  
 ACT BW 61 | ADJ WW 962 | ADJ YW 1438  
 Owned with Maple Lane, Nowatzke Cattle & Express Ranches



CED	BW	WW	YW	HP	MILK	DOC	CLAW	ANGLE	CW	MARB	RE	\$M	\$B	\$C
19	-2.5	60	116	13.5	33	22	.59	.43	57	1.30	.91	81	197	337

Cattle have to have the right “look” to fit into our program, they **MUST** come from a strong maternal program, here is a bull that does both and comes in an ultra elite calving-ease package. He also stands to be excellent on PAP and marbling for those out west and those chasing a premium on the kill floor!

EXAR Elba 9501 is one of the power cows in the Angus world. Express sold her to Riverbend Ranches and she has proven time and again to produce progeny that demand a premium.

Bedlam is big hipped, bold ribbed, good looking, and if you chase the numbers he has them lined up. Don’t sacrifice your bottom line and the things that make **YOU** money. Bedlam is a bull that puts it all in one package!

*calving* EASE *deluxe*

GAR ASHLAND  
**SIRE** **GAR HOMETOWN**  
 CHAIR ROCK SURE FIRE 6095  
 CONNEALY CONFIDENCE PLUS  
**DAM** **EXAR ELBA 9501**  
 EXAR ELBA 7210

BELOW EXAR Elba 9501, Dam of Bedlam





## CHESTNUT RELAX

AAA 20757458 | BREED ANGUS | ACT BW 67 | ADJ WW 717

Relax is a bull that Cory Thomsen called us on, “This is one you need to own.” Relax looks calving ease, he’s small headed with the right shape, shoulder shape and build that you’d want to breed your heifers to. His pedigree is deep in maternal oriented genetics. Tim Schaffer is who bought Perfect Timing, his stamp of approval goes a long way. Relax has a great set of feet and legs, he’s tall fronted, long necked, and good looking. Chestnut Angus is longtime Angus breeders that know how cattle should look, and how they should perform, we love doing business with people who believe in cow family’s generations deep and don’t waver from their commitment to great cattle. Relax is just that type of bull.

**USE WITH CAUTION THIS FIRST YEAR ON HEIFERS  
UNTIL WE GET A FEW ON THE GROUND.**

## *calving* EASE

S&R STABILITY J824

**SIRE**

**CHESTNUT PERFECT TIMING 341**

TR MS BLACK ROSE 8158F

**DAM**

**CHESTNUT WINNIE DS 923**

KRAMERS ENFORCE 5006

CHESTNUT WINNIE 023

CED	BW	WW	YW	MILK
11	-2.5	41	71	31





# PLAY IT SAFE

AAA 20095351 | BREED ANGUS | ACT BW 69

*Owned with Mullett Livestock*

We are cow family gurus around here, it's the secret to consistency. John saw this bull and loved him but his pedigree, specifically the cow families GENERATIONS DEEP sealed the deal, then the fact that he is calving ease deluxe put the extra stamp of approval on him. This pedigree is as deep in foundation Ohlde genetics as any you will find. Add to that the Donna cow family is epic in making those foundation cattle that have taken so many to the top of their game, she is unparalleled in consistency and potency.

Now we love pedigree's because we love figuring out why cattle are so good, but let's talk about the bull himself. We are going to start at the front and move on back. Study the makeup of this bull's head, you can tell a lot about him just by that. He has a presence about him that screams female maker. His neck comes out high on his shoulder and he's good fronted, good bodied, with rib, shape, and dimension, he has the muscle pattern and design to make females and has a 38 scrotal. You can't ask for anymore on a female making, easy calving bull.

He won't be the bull that makes you a super high dollar show heifer but the females he leaves you will be unbelievable cows, the kind of females that as five year olds that you can mate to anything and they not only work but they look amazing doing it, mate the Simmy, Maine, or Angus, they will be the kind that "click". Set up the base, take care of the basics, everything else will fall into place. This bull is bred for potency and consistency.

## *calving* EASE



ABOVE Akers Juanada 9100, Dam of Play It Safe

COLEMAN CHARLO 0256

**SIRE** **COLEMAN BRAVO 6313**

COLEMAN DONNA 714

N BAR EMULATION EXT

**DAM** **AKERS JUANADA 9100**

O C C JUANADA 710K

CED	BW	WW	YW	MILK
15	-1.7	49	83	20



CED	BW	WW	YW	HP	MILK	DOC	CLAW	ANGLE	CW	MARB	RE	\$M	\$B	\$C
19	-2.5	60	116	13.5	33	22	.59	.43	57	1.30	.91	81	197	337

## SCHIEFELBEIN UNREAL 242

AAA 20490805 | BREED ANGUS | ACT BW 57 | ADJ WW 777

*Owned with Schiefelbein, Polzin Cattle & Thomas Angus Ranch*

Schiefelbein Unreal encompasses the numbers and ranks in the top 4% of the breed with double digit calving ease and a negative BW EPD of -3.3 ranking him in the top 1% but also turns around in curve bender fashion and ranks in the top 2% for weaning and 1% for yearling. All of that is awesome but the part that attracted us the most to Unreal was the fact that he, his dam, and his sire looked the part, and were visually analyzed for all the things that make producers profitable. Coming from a line of donor females for the Schiefelbein program his dam in EPD ranking in the top 35% of 11 of the 12 major traits. This includes the top 1% for YW, 2% for WW, 3% for DOC, 4% for \$M, 5% for BW, 10% for Milk & RE, 15% for \$C and 25% for CED & HP. Before she was analyzed for her genetic profile she was analyzed visually, she was set apart from her contemporaries for having the eye appeal and balance that set good cattle apart.

*calving* EASE *deluxe*

DEER VALLEY GROWTH FUND

**SIRE** SCHIEFELBEIN UNTOUCHABLE 70  
FROSTY ELBA 4107

SCHIEFELBEIN ATTRACTIVE 4565

**DAM** FROSTY ELBA 450  
FROSTY ELBA 2048





## RECALL 2

AAA 19590482 | BREED ANGUS | ACT BW 65

### *calving* EASE

O C C HEADLINER 661H

**SIRE** O C C MISSING LINK 830M

O C C DIXIE ERICA 946K

O C C EMBLAZON 854E

**DAM** O C C JUANADA 741K

O C C JUANADA 709Z

BW	WW	YW	MILK
11	0.1	38	60

A bull like Total Recall only comes along once in a lifetime, well then again maybe twice. Let us introduce you to Recall 2, a clone to the greatest calving sire of consistency, design, and added value we have ever raised.

You could fill up pages of progeny that have demanded premiums. He is sure fire heifer bull, sure fire style bull, sure fire cow maker. If you want to add a gazillion pounds this isn't your bull. If you want your heifers to calve unassisted and have a set of females that are easy fleshing, low maintenance, good looking, and will out produce themselves year after year you had better put in a few canes of Recall 2.



## ANDY

AAA 19519193 | BREED ANGUS | ACT BW 68

### *calving* EASE

GCC TOTAL RECALL 806T

**SIRE** GCC LEGACY 647X

GCC JODY 900U

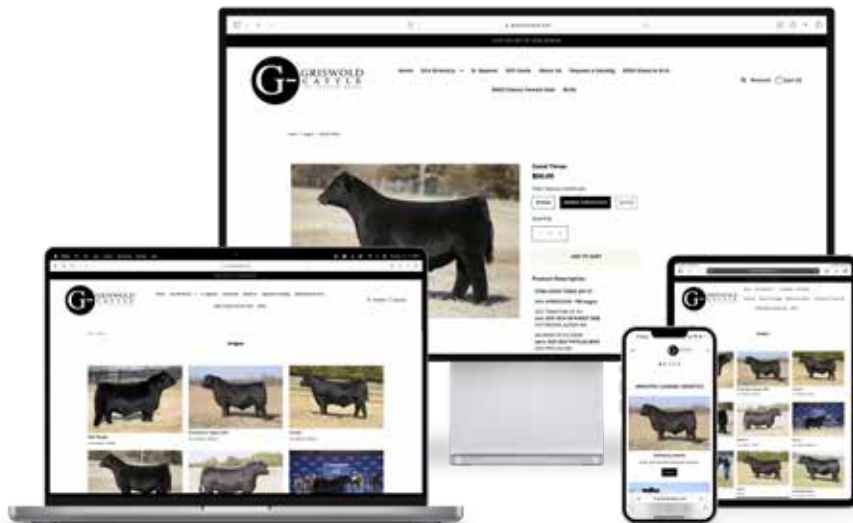
OSU CLASS ACT

**DAM** GCC POLLYANNA 660B

GCC POLLYANNA 616Z

CED	BW	WW	YW
16	-2.7	37	68

Andy is a maternal brother to the great Justify bull, his dam is one that does not miss. Better yet he is a true-blue calving ease sire. With an actual 68 lbs bw, -1 BW epd and a CED of +10. He is bred calving ease but still had a 14.6 REA and IMF of 5.91, he is the kind to produce a set of daughters you retain back into your program, he will add the maternal look and design you are after. 660B raised a \$44,000 show heifer in the 2020 Classic that sold to the Stagemeyer family in Nebraska. She produced Justify as her third natural calf as our \$50,000 high selling bull. She just entered our donor program as a does not miss female. Take the homework out of trying to find the consistent cow families, don't breed to a bull just because he's a heifer bull, put some pedigree and consistency in your cow base, Andy is your man! Use with confidence.



# ORDER *online* AT

[www.griswoldcattle.com](http://www.griswoldcattle.com)



FOR FURTHER INFORMATION & TO VIEW THESE AND OTHER G- BULLS, VISIT [WWW.GRISWOLDCATTLE.COM](http://WWW.GRISWOLDCATTLE.COM)



**STANDARD TIME 924D**

AAA 18593292 | BREED ANGUS  
SHULTZ CLASS TIME 321A X J O C C JUANADA  
*Owned with Randy Schurring*



**JET SET**

AAA 15944145 | BREED ANGUS  
OCC JET STREAM X RITO 9Q4 SASQUATCH



**PANHANDLE**

AAA 18210325 | BREED ANGUS  
DAMERON FIRST CLASS X J&J QUEEN 414  
*Owned with Warren Cattle*



**KING GEORGE**

AAA 17769354 | BREED ANGUS  
GCC BLACK WATCH 849T X DUFF NEW EDITION  
*Owned with Humphrey Show Cattle, Kamp Ranch,  
Kooper Branum, JE Ranch Foundation, Circle M Farms  
& Bourquin Cattle*



**STANADARD DESIGN 933E**

AAA 19068026 | BREED ANGUS  
DAMERON FIRST CLASS X OCC JUANADA 925R



**NEW GAME**

AAA 18324437 | BREED ANGUS  
DAMERON FIRST CLASS X DUFF NE 9375 GEORGINA  
*Owned with Jones Show Cattle & Three Aces*

# Maine *anjou*





PHAF/THF

AMAA 531446 | BREED 3/4 MAINE | ACT BW 77

Belmont is the bull that the Maine breed needs, he is functional, powerful, and comes from a female that isn't just a fluff ball, she's a powerhouse, baked by generations of donors and powerful made individuals. . Belmont is a Data Bank x B571 (Hard Whiskey) she hails from the great 673R, a direct daughter of OCC 816B a full sister to OCC Emblazon the arguably the greatest cow family to ever walk. I could write volumes. Take the time to go to our website and watch her video, it speaks for itself. B571 has as much volume, overall power, mass, and dimension as you could possibly put in a female, she simply has not ever missed, not once, every calf she has made has been the right kind, she clicks no matter how she is crossed. A Garth daughter brought \$26,000 to Cleve Clark and won just about every major in Texas, her \$10,000 flushmate went to Florida to Shenefield family and has been supreme heifer at over 18 jackpots and won every place she has gone. A full sib to Belmont brought \$17,000 and a Garth brother sold for \$9,000. His full sister brought \$35,000 as lot 101 to Lambright and Thwaites. This is a full list of progeny sold. If I could replicate her a thousand times over I would, that's just how much we all love this cow. Belmont's full sister is the ideal female regardless of breed, perfect uddered, good footed, depth, capacity and stunningly beautiful.

# BELMONT

CE	BW	WW	YW	MILK
8	-1	44	65	22

BBBN X2 201X

**SIRE** **BNWZ DATA BANK 1311C**  
BNWZ CALYPSO 28Y

MINN HARD WHISKEY 591Y

**DAM** **GCC DIXIE ERICA B571**  
GCC DIXIE ERICA 731W

*Owned with Skyline Farms*

Belmont has stood out from the time that he was little, he had the bone, mass, and power you wish you could put into every calf. He hits his stride right on and does it in a powerful made package. The calves are on the ground, they have that look, time will tell but right now we are pumped. This is a bull that literally has the potential to sire those females that still have the look and soundness you want but keep the power and sire the male counterparts that deserve to be left bulls.



## BNWZ DATA BANK 1311C

AMAA 464046 | BREED PUREBRED MAINE | ACT BW 76

*Blind Badger Ranch & Tolle Show Cattle*

If you follow the Sullivan Pulse and you stay caught up on the happenings of shows there is one bull you would be hard pressed to miss, his name shows up often and his daughters not only like the color purple they wear it well! Data Bank, the bull you better be willing to reckon with in and out of the show ring in the Maine Anjou breed.

No I-80, no Ali and he works awesome on those pedigree's! Data Bank hails from some of the greatest cow families in the breed who have shown their power in the show ring but most importantly in the pasture. In an era when the search for a purebred Maine option has been somewhat limited, Data Bank is the answer. He is awesome footed, smooth jointed and is athletic as you can make a mature bull. His daughters are in production, good udders, and attractive females. Our lot 101 in the 2020 Classic was a Data Bank, that's a pretty big deal around here. Sale toppers, showstoppers, and plenty of online shoppers, do your homework, he's a bull that if you are in the business of turning a profit you need to be using.

CE	BW	WW	YW	MILK
11	-.13	.38	.53	32

**SIRE**

**BBBN X2 201X**

GVC STATESMAN 4R

BOSS BEAUTY 84M

**DAM**

**BNWZ CALYPSO 28Y**

SLC SOONER 101M

DLB MISS WHISKEY 2T

bringing home the *style*



ABOVE Data Bank Daughters

# GAME ON



Bring on the power and bring on the good this is a bull that if you haven't used you need to. The calves are as consistently good as any high Maine bull in the industry. Game On brings power back to the game in making females that are full of dimension and style while still having the red muscle and design that made Maines famous to begin with, the bulls look like bulls should, stout, big bodied and real.



When I was buying heifers in Canada 30 years ago, they would run them down the alley at you several at a time. It didn't take long to figure out you could tell a lot by just looking at their head, especially when you were trying to sort 80 out of 800. Game On has the type of head that I like, it was one of the first things that I noticed about him, it's the kind you find on good cattle, and he has all the right parts from his head on back.

Purple is in his pedigree. His dam has produced National Champions that have won everything from Denver to Fort Worth. That power carries on down. 15 head of heifers averaged \$15,683 in Jirl Buck's sale.



PHAF/THF

AMAA 505128 | BREED PUREBRED MAINE | ACT BW 89

*Owned with Buck Cattle & Morton Cattle*

CE	BW	WW	YW	MILK
2	11	67	97	5

**SIRE**

**BOE GARTH**

MINN HARD WHISKEY 591Y

BOE MISS JOLENE

**DAM**

**BKJFRZANELLA 227**

HAA WISDOM 5055

DCC PLAYMATE 267K





## GCC OLE MONEY 436J

AMAA 525856 | BREED 3/4 MAINE | ACT BW 90

Owned with Brad & Kevin Holt

Every day we are getting calf reports on Ole Money, they are stout made, good looking. We have weaned our first set and couldn't be happier with the consistent quality the entire way through. You always wonder that first year how the calves will turn out, Ole Money's are going to not only turn out they are the kind to turn a profit. This is the kind of bull that we dream of making, the kind that puts everything together from pedigree, to phenotype, to performance. Bulls like this don't just happen, they are rare and that said they are special. "Boston" has made herself a household name. Boston isn't just a fluke, she's not just a cow that happened to be good. A direct daughter of 5066, the dam of Masterpiece, Bae, Jezzeabelle and countless high sellers and great cattle. 5066 a daughter of 3066 who was a full sister to 2066, the dam of Chill Factor. 3066 was as pretty a cow as you have ever seen, she was beautiful. She had a TJ heifer that Frank and Christina Ward bought for \$11,500 in the Exposure when \$11,500 was like \$100,000. Those cows came from 066, the cow that came from Wisconsin and started it all, **DONORS, DONORS, AND DONORS.**

You bet this pedigree gets us pumped up because they are the right kind of cattle, consistency is bred deep. We have used him with the most success on Angus cows, some flat made, some powerful, he just clicks that way.

CE	BW	WW	YW	MILK
-1	0.7	49	62	5

MINN HARD WHISKEY 591Y

**SIRE** **BOE GARTH**  
BOE MISS JOLENE

DADDY'S MONEY 55Z

**DAM** **GCC MISS BOSTON 550IC2**  
GCC MISS WHISKEY 5066

# BOSTON

*lives on*



# KABG STRT REFLECTION

A<sup>M</sup>A<sup>A</sup> 549115 | B<sup>R</sup>E<sup>E</sup>D 5/8 MAINE | A<sup>C</sup>T B<sup>W</sup> 70

You have seen Bremer 960 splashed across the Pulse as her progeny sweeps the steer rings and bring 5 figures on multiple calves just in 2023. A maternal brother to Reflection was just slapped Reserve at AKSARBEN and you will see more of them to come.

Now add a different twist on things and bring a more maternal line of cattle into the equation! In walks Reflection, he's bold made, big topped, baldy faced and flat out **SWEET**, consistency is key in this game, if you want cattle that have that "extra look" with the extra pizzazz this is one that needs to be in your tank!

**SIRE**

**DUEL ICON 802F**

BOE EPIC

DUEL WORRY NOT 4303B

**DAM**

**WW SWSN PAIGE 960G**

BBR FX MAY WE ALL 6D

BTMS SPECIAL BLEND 701E



LEFT WW SWSN Paige 960G, Dam of Reflection

RIGHT 2023 TSF Champion Market Steer, Maternal Brother to Reflection



# K&A PROMISE KEEPER 23K

AMAA 537079 | BREED 5/8 MAINE | ACT BW 77

*Owned with Bremer Show Cattle, Lucky Strike Show Cattle & Blind Badger Ranch*

When the three names listed below call you that they have a bull that is the kind to take the breed forward you listen. Promise Keeper is the kind to make a carbon copy of time and again, he's flat-out good cattle. Promise Keeper is the kind to make a carbon copy of time and again, he's flat-out good cattle. With the proven maternal power of Daddy's Money on the bottom side and one of the best cow families ever owned by K&A the potential to what **PROMISE KEEPER** can do for your program is limitless.

The calves are on the ground, they are cocky made, square topped, and good looking, you find them in a set, and they keep catching your eye.



CE	BW	WW	YW	MILK
8	14	34	43	21

**SIRE**

PRIMETIME  
**KBSC NEW DECADE 68G**  
 KBSC CHK 035X

**DAM**

DADDY'S MONEY 55Z  
**K7A LADY 677D**  
 K&A FOREVER LADY 849U



RIGHT Fame Daughter

## BOE FAME

AMAA 505122 | BREED PUREBRED MAINE | ACT BW 90

Owned by *Beauprez Land & Cattle & Nagel Cattle*

The Beauprez program is known for producing bull that lead the industry in stoutness, muscle and power, add to that the consistency and cow power of the Nagel program that has been synonymous with the Maine breed. This is a bull we have long had our eyes on and we couldn't be more excited to add him to the lineup.

Fame was a crowd favorite and high seller in Denver. He was Grand Champion at Cattlemen's Congress and he has went on to prove he's more than just good looking he produces high dollar cattle. He just made an \$87,000 female in the Dakota Classic and a \$19,000 bred heifer in the Classic. These are the kind of females that are going to make donors no matter where they end up.

MINN HARD WHISKEY 591Y

**SIRE**

**BOE GARTH 40B**

BOE MISS JOLENE

NAGE DOPPLER 27X

**DAM**

**NAGE MISS DOPPLER 50A**

NAGE MS SPECIAL D 54X

CE	BW	WW	YW	MILK
-4	4.9	42	50	18

# garth

PHAF/THF



*SIRE*

**MINN HARD WHISKEY 591Y**

DCC HARD DRIVE 138R  
JSC KATIE 5S

*DAM*

**BOE MISS JOLENE**

GVC SUH 01W  
BOE KELSEY

Garth is the most consistent Maine bull we have used since Whiskey. It is pretty hard to believe that he is clean because he sires them like he's dirty. He makes them big boned, **STOUT**, hairy, and good looking. He has produced some of the breeds leading sires, top donors, and show winners. He's real, he's consistent. We always get a lot of calls on people wanting us to buy bulls, we had more calls on awesome Garth son's than any bull we owned last year. We could fill up this page with pictures of Garth progeny, point made, they are good cattle. Only use on mature cows.

CE	BW	WW	YW	MILK
-8	6	55	76	10

AMAA 447000 | BREED PUREBRED MAINE | ACT BW 92  
*Owned with Beauprez Land and Cattle & PKL Show Cattle*



*a true*  
**LADY**

5066 hails from the powerful and prominent 066 cow family that has their roots set deep in Griswold genetics. She is the dam of Miss Boston, the Junior National champion two years running, and the Champion female in the Open and Junior show in Denver. Her Broker son was the lead-off bull in our Denver Champion 2017 Pen. She was the dam to lot 1, 2, 3, and 4, in the past Classic each one a testament of the 066-cow family. 5066 remember that number, write down the pedigree, she's a once in a lifetime kind of female.

IRISH WHISKEY X GCC MISS COLDFRONT 3066





# GCC SAFETY PLAN

AMAA 539577 | BREED 5/8 MAINE | ACT BW 79

**SIRE**

**DADDY'S MONEY 55Z**

GOET 180

JSC VELVET 112W

**DAM**

**GCC MISS WHISKEY 5066**

IRISH WHISKEY

MISS COLDFRONT 3066

CE	BW	WW	YW
7	-0.4	31	37

Safety Plan on his own merit is the kind of bull you fall in love with when you walk in the pen, bold ribbed, big footed, on a solid foot and the one you go back to time and again, then you look in his ear and realize there is a reason he's put together like he is. His dam is the great 5066, who stands as one of the most influential donors we have ever owned and he himself is a full sib to Boston. His story begins generations before in Wisconsin, a family set out to raise good cattle, they came with Joe, his family a truckload of dreams to Oklahoma where John would end up with 066, with little knowledge of how that one line of cattle generational all the way back to his fathers, fathers would influence his life and change our program.



# GCC MASTERPIECE

AMAA 502797 | BREED 1/2 MAINE | ACT BW 78

*Owned with Manske Cattle & Grizzly Ridge*

**SIRE**

**NMR MATERNAL MADE**

BPF MERCEDES BENZ 131 U

NMR 0-04X

**DAM**

**GCC MISS WHISKEY 5066**

IRISH WHISKEY

MISS COLDFRONT 3066

CE	BW	WW	YW
8	2.9	37	46

PHAF/THF

If we had to write a book on the most influential cows in our program it would easily be 066, her daughter 5066 is right on her heels. Maternal sisters to Masterpiece have produced our lead off heifers in the Classic, they have produced our top bulls, and our best replacements. They are donors and high sellers and no matter how we cross the matriarch 5066 she produces the top of the pen. Her daughter and maternal sister to Masterpiece, Miss Boston, was one of the most decorated females in the Maine breed and was Champion at Junior Nationals as a bred heifer and as a pair. Her daughters led off the Classic this year and for good reason, they are good cattle.

The Masterpiece calves are on the ground, ours look dang good here and the reports we are getting are strong across the board. Double doses of Whiskey, and cow families top and bottom that are consistent as the day is long.



**ABOVE** Maternal Sister to Money Moves

## MONEY MOVES

AMAA 549722 | BREED 5/8 MAINE | ACT BW 70 | ADJ WW 606

We could write a novel on the power of B571 and bringing together the power of the 066 cow family through Ole Money brings an entire lineage of powerful cattle top and bottom. This stout made, big footed bull is one that you will fall in love with. We aren't believers in breeding off of paper, or being barn blind, but we are huge believers in cow power, in consistency, and selecting for the pedigree's that do not miss. These two pedigree's bring our very best to the table. Use on a set of Angus cows, we promise you won't be disappointed, this is the cow making kind all day long, a maternal brother to Belmont and some of our most elite donors.



BOE GARTH

**SIRE**

**GCC OLE MONEY 436J ET**

GCC MISS BOSTON 5501C2

MINN HARD WHISKEY 591Y

**DAM**

**GCC DIXIE ERICA B571**

GCC DIXIE ERICA 731W





## DOUBLE THREAT

AMAA 537079 | BREED 3/4 MAINE | ACT BW 74 | ACT WW 640 | ACT YW 1365

*Owned with Glenny Cattle & Lucky Strike Show Cattle*

If you follow pedigree's like we do there is one in this industry that you are sure to have found, she's intriguing, she's dominated the champion pages, and she is a powerhouse cow, Dominatrix the dam of Memphis Mafia. Add a dose of Maternal Made, bring on the Data Bank, and you have a pedigree that is loaded.

Double Threat has the power of Mafia and proves the consistency is generational, he is big footed, big legged, and big topped. All the look from his profile and when you get behind him step back and do a double take, he is all there. Bring On the power! Double Threat was Cattlemen's Congress Champion Maine bull.

One of our favorite parts about Double Threat is that Cody Glenny and his family raised him. They have been pumped on this bull since day one, with every right to be. Glenny is a right hand man around here, he shows up everyday as the sun comes up and he stays many days after the sun goes down, he loves good cattle, he lives and breathes the cow world and this bull is an accomplishment to that. This bull isn't a per chance, he's bred to be good and he darn sure is the kind to throw more than a little power and look.

BBBN X2 201X

**SIRE** **BNWZ DATA BANK 1311C ET**  
BNWZ CALYPSO 28Y

NMR MATERNAL MADE

**DAM** **BBR GERANIUM 164G ET**  
GEF MISS DOMINATRIX 236A



# maternal MADE



PHAF/THF

We still have the same consensus on the Maternal Mades, they are good. We have used him heavily in our program to breed with and to flush with. His daughters are winning in the show ring and we are even more excited as to what they are going to accomplish as cows. We love hearing about the high dollar ones, but the best thing is that they are consistently good.

This past year the power of Maternal Made as a female maker has become all the more evident in the consistency of his daughters in production. With him on the bottom side high sellers across the country are popping up in everything from the steer world to the female world. Breed to mature cows, but then make sure to keep them as mature cows.

AMAA 459900 | BREED 1/2 MAINE | ACT BW 85

Owned with Reimann Ranches, Thompson Show Steers & Kroupa Genetics

CE	BW	WW	YW	MILK
11	4	32	39	25

**SIRE** COWAN'S ALI 4M  
**BPF MERCEDES BENZ 131U**  
 DCC MERCEDES 701P

**DAM** IRISH WHISKEY  
**NMR 0-04X**

“legends and myths  
 are largely made of the  
**TRUTH**”

*ja toeh*



# makin time

AMAA 496260 | BREED 3/8 MAINE | ACT BW 68



PHAF/THF

Makin Time didn't get used super heavy the first year we bred him, but where he was used he clicked as well as any bull we have ever bred. He increases the potency of Maternal Made and the 0-04 cow by adding the bottom side of 1829. This is a bull that if you are into making females with consistency and potency you need to be using. When used on Whiskey the resulting females are breathtaking. Makin Time will be the replacement for Whizard.

Makin Time's dam, 1829 is one of the greatest cows we have **EVER** owned, she makes herd bulls, she makes donors, the most important thing she does is makes them good! She is the dam to Cerveza and Whizard, two bulls who have sired as many high dollar females for raising club calf bulls as any bulls in the industry besides Whiskey. Maternal sisters are in our donor program and are proving the same consistency as their dam. His full sister just may be one of the best cows we own right now.

CE	BW	WW	YW	MILK
16	-1.4	45	54	21

BPF MERCEDES BENZ 131 U

**NMR MATERNAL MADE**

NMR 0-04X

SIRE

DAM

CHILL FACTOR

**MISS CHILL 1829**

POWERS SKYLAND EMULOUSAN



LEFT Making Time Daughters

PHAF/THF



The power of a cow family is something that goes down through the generations and breeds through her son's. Whizard was the kind of bull that literally changed an industry and we have struggled long and hard to find a bull that we feel will walk in his footsteps, Spot On just may be that bull. When you watch him move, he's got the foot size, the base width and dimension that as producers you can't help but love. Step on board, this is one bull that is **SPOT ON!** He has been used successfully on heifers this past year and offers a completely different approach to your calving ease lineup. He's bold and he's exciting, jump on board!

AMAA 536810 | BREED 1/4 MAINE | ACT BW 72

*Owned with Vanhove Cattle*

**BELOW** Vanhove On The Mark 822, Dam of Spot On



DADDYS MONEY 55Z

**SIRE**

**BBR FX MAY WE ALL 6D**

M.A.C. SHELBY 302A

JASS ON THE MARK 69D

**DAM**

**VANHOVE ON THE MARK 822**

MLJM SHELBY

# SPOT ON





PHAF/THF

## KMEM TURN IT UP 196K

AMAA 536999 | BREED 3/4 MAINE | ADJ BW 75

*Owned with PKL, Wacey McDuffee & Hull Show Cattle*

Turn it Up was a bull that Terry Lockhart found for us and fell in love with. We stayed in the loop and when we went to see him, we were equally impressed. Super soft at the ground, easy traveling and all the look you could want with a full-on baldy face. For those looking to throw a calf that has the “look,” presence and design to turn heads he’s your kind. Hairy, sound, and that cocky expression that will make you do a double take. Icon is proving time and again in the Duello program to work on a variety of cows and we are pumped to add those genetics to our base.



**SIRE**

BOE EPIC  
**DUEL ICON 802F**

DUEL WORRY NOT 4303B

**DAM**

DADDY’S MONEY 55Z  
**SEYS LADYBUG 17G**

SEYS MATCH MAKER 17C



## JBT ORIGINAL GANGSTER

AMAA 523522 | BREED 3/4 MAINE | ACT BW 60

*Owned with Tolle Show Cattle & Bowling Cattle*

Daddy's Money proved to be a true-blue calving ease specialist. One of the most important things there is on first calf heifers is being able to have an easy birth with a live, vigorous calf. Since his death we have looked for a son that could replace him for calving ease. Original Gangster is Daddy's Money out of a full sister to Data Bank. Tolle has been a big part in finding those great bulls for our program. **HEIFER SAFE AND ROYALLY BRED.**

GOET 180

**SIRE** DADDY'S MONEY 55Z  
JSC VELVET 112W

BBBN X2 201X

**DAM** BNWZ CALYPSO 28Y  
DLB MISS WHISKEY 2T

# calving EASE





## CCMM FULL TILT 803F

AMAA 495115 | BREED 3/4 MAINE · 4.71% CHI | ACT BW 69

*Owned with Copeland & Sons*

Full Tilt is a tremendously designed 3/4 blood High Maine option that blends enough Chianina genetics from the MS Ace 308Y female and dam of Dual Threat, to make every one of his offspring eligible to be Dual Registered. Study Full Tilt's design and you'll quickly discover he is a great option to add additional power, muscle, and tremendous look and style. Selected as Grand Champion Maine-Anjou bull at the 2020 Fort Worth Stock Show and Rodeo and Reserve Grand Champion Maine-Anjou Bull on the green shavings at the 2019 North American.

**HEIFER SAFE ON BIG STOUT BROODY HEIFERS.**



GOET 180  
**SIRE DUAL THREAT 305A**  
 MS ACE 308Y

SLC SOONER 101M  
**DAM JAMISS SOONER 932**  
 MISS GREEN VALLEY 322N

CE	BW	WW	YW	MILK
19	-4.9	32	38	14



# TAKE ACTION

AMAA 522726 | BREED PUREBRED MAINE | ACT BW 79

Owned with Morgan Bobek, Wild Leaf Farms,  
Doyle Leefers, PKL & Wacey McDuffee



PREDATOR 19U

**SIRE** MINN LIVE ACTION 203Y  
JSC KATIE 5S

BPF MERCEDES BENZ 131 U

**DAM** BSC AALEYAH 74A  
K&A CELEST 517R

CE	BW	WW	YW
12	4	31	34

The Live Action cattle are the newest and hottest out-cross pedigreed cattle in the country. Take Action is a full sib to Beauprez's BSC Freedom 147F and a full sib in blood to the popular WEIS All Me bull. Take action is also a 3/4 sib to Sweet Willie owned by Gensini, Rodgers & Wilson who has sired many high sellers in the last year. BSC Take Action 5073J is a big outlined bull that presses the scales down hard with his added performance. As an out-cross sire with growth and punch he is the kind that will mate well with a wide variety of Maine-Anjou cows.

# NEW BEGINNING

AMAA 486141 | BREED 1/2 MAINE | ACT BW 80

Owned with Thad Hutchens & Reimann Ranch



PHAF/THF

COWAN'S ALI 4M

**SIRE** BPF MERCEDES BENZ 131U  
DCC MERCEDES 701P

IRISH WHISKEY

**DAM** NMR 0-04X

CED	BW	WW	YW
9	18	41	53

New Beginnings is full brother to one of the most consistent and timeless bulls we have ever used, Maternal Made. We lost Maternal Made this past summer and with limited semen left now is the time to turn to New Beginnings.

0-04X is a cow you need to know; you need to keep her on your radar and watch for her in pedigrees. There isn't a female in the country that clicks with such a wide variety of bulls and makes high dollar cattle as she does, she is **POTENT!** It doesn't matter if it's Simmental, Maine, or Angus she clicks and she brings home the money. Breed for cow power, you won't go wrong!





**DONE DEAL**

AMAA 505405 | BREED PUREBRED MAINE  
BOE GARTH X BOE 425BK  
*Owned with Beauprez Land and Cattle  
& Boehning Dairy*



**TRUE MEASURE**

AMAA 502804 | BREED 1/2 MAINE  
BOE GARTH X O C C JUANADA 925R  
*Owned with Coyote Creek Cattle*



**CERVEZA**

AMAA 328874 | BREED 1/2 MAINE  
IRISH WHISKEY X MISS CHILL 1829  
*Owned with S7 Cattle*



ORDER *online* AT

[www.griswoldcattle.com](http://www.griswoldcattle.com)





## BMW GCC BUCKET LIST

ACA 414345 | BREED 9.05% CHI | ACT BW 76

*Owned with Winegardner Klingaman Show Cattle & VanVorhis Cattle*

Bucket List bleeds purple, he is the reigning National Champion ChiAngus Bull and his sisters have stood at the backdrop at every show across the Nation. He is a full sib to the VanVorhis heifer that stood in the winner's circle at every major show in the country, his Who Da Man sisters were not only highly sought after they got slapped their fair share, the 422C shown by the Skiles family won the NAILE and was Junior National Champion. Other notable maternal sibs are Sara Sullivan's Reserve Champion in Denver and Thomas Willis' National Champion ChiAngus Female.

It has been said by many that this may be the **BEST** ChiAngus bull the breed has seen in some time! You will not find one any stouter or complete regardless of breed. He's the winning kind and bred for purple, he's flat-out good cattle.

CE	BW	WW	YW
8	2.2	68	103

**SIRE**

**COLBURN PRIMO 5153**

DAMERON FIRST CLASS

SILVEIRAS SARAS DREAM 1339

**DAM**

**MS ROCKN ACE 36U**

RDD DESTINYS ACE

SIC LACI 4123P





PHAC/THF/DSC

## WHO DAT CLASS

ACA 392600 | BREED 13.08% CHI | ACT BW 88

*Owned with Sullivan Farms*

6640 has produced more national champions and supreme champions at every level than any female in the country. Time and again Who Da Man daughters have proved they have that extra look, extra extension and extra style and able to transmit it to their progeny bringing what we all want, that extra money. Who Dat Class brings one more dose of extreme power and consistency to the legend of Who Da Man.

Sullivan Farms wrote that Who Dat Class was the best Who Da Man son ever produced. This future super star sire is from the ever popular and proven Who Da Man/6640 mating that has produced multiple champions from state fairs, national champions, to the 2012 and 2017 NAILE Supreme champion females. He just might be the next replacement we have been searching for to replace his great sire.

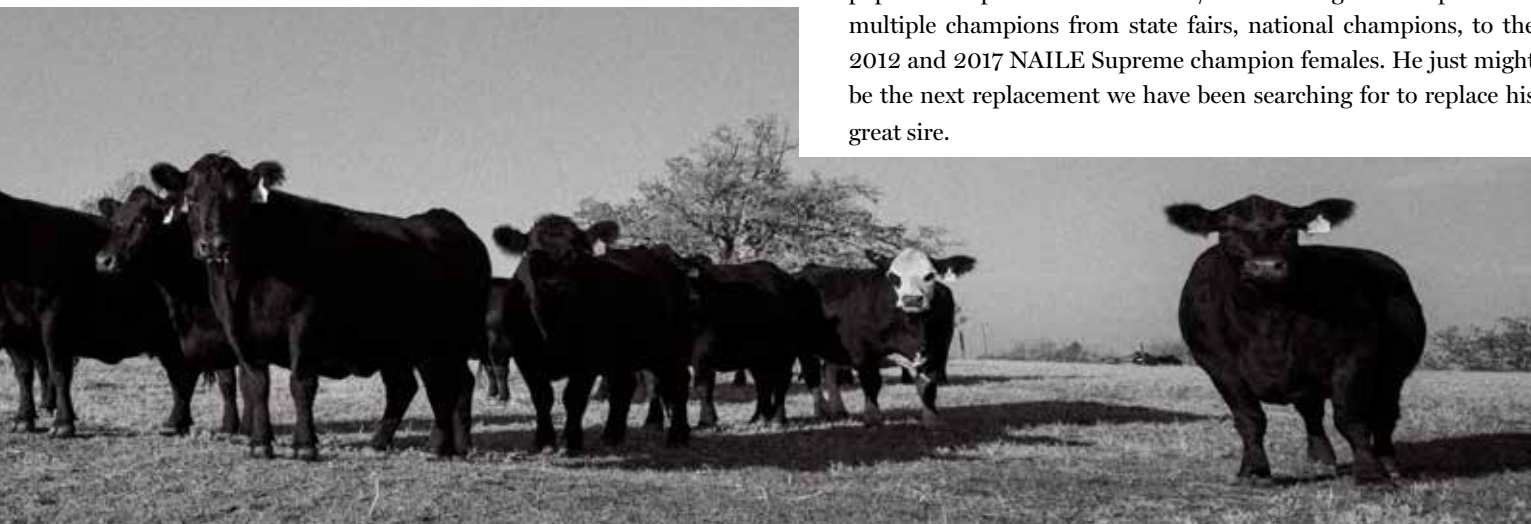
WHO MADE WHO 411 F

**SIRE** **ASHWWHO DA MAN**  
ASHW CA X MA X SM 55

BHCS HEAT SEEKER 23

**DAM** **JSULSULTRY 6640**  
JSUL MA X AN 6651

CE	BW	WW	YW
8	3.2	48	70





# RED EAGLE

RAAA 3753947 | BREED RED ANGUS | ACT BW 92

*Owned with Texas CDS Cattle & Eagle Pass Ranch*

We went on a mission to find the best Red Angus bulls in the industry and put a bug in everyone’s ear that we could think of that we were in the market. John got a phone call from Luke Dorris on sale day about 45 min before it started that Red Eagle was the real deal, big bodied, sound made, powerful, and the cow making kind! Josh Taylor said this is one of the most impressive Red Angus he has ever seen and that is saying something, we have to agree!

Red Eagle is unmatched in his body composition, and muscle. He has as much shape, width, and center mass as you will find regardless of color or breed, couple that with an attractive profile and great pedigree. He is sound made, and bigger legged than most Red Angus and has the feet that the industry needs and demands!

The calf reports are on target with cattle that correctly made, functional and productive. High sellers have dotted the nation, and you are going to see more of this bull in the future!

CE	BW	WW	YW	MILK
7	1.8	75	108	20

**SIRE** RED U-2 RIFF 1213C  
 RED U-2 RECKONING 149A  
 RED U2 OPHELIA 370W

**DAM** TJS SARABELA174  
 LOOSLI RIGHT KIND 147  
 TJS LONE STAR S663



# HARVEST MOON



RAAA 4646137 | BREED RED ANGUS | ACT BW 68  
 Owned with JB Cattle & ER Cattle

Eric Richards has been a family friend since he was a little boy. He helps us whenever we are in a pinch from clipping to feeding, he is super handy, plus he knows good cattle. He called us and told about a Red Angus bull that was soggy made, powerful, easy doing, and easy on the eyes. In walks Harvest Moon.

This is a bull that is the cattlemen's kind. He has the look, doability and performance to flat out work on papered set of cows and on a commercial outfit. He is loose structured and his feet and legs are awesome.

CE	BW	WW	YW	MILK
10	-0.8	61	98	24

LT REGENCY 301E  
**ALT MOON SHOT 920G** *SIRE* *DAM* **TW LULU`S GIRL 906G**  
 U2 MOONBEAM 243Z KEIFERS LULU Y55

# calving EASE

## KR MR PEACEMAKER

RAAA 4340131 | BREED RED ANGUS | ACT BW 66  
 RK Cattle, Dr. Ryan Rathmann, Norman Kohls  
 & Texas CDS Cattle



ROJAS RIOJA 6052

**SIRE** MR RED ROOSTER 821F  
 MS RED FIRE 562C

DUFF CAESAR

**DAM** WGLS 833  
 PIE STRAWBERRY 4159

CE	BW	WW	YW
14	-2.5	.56	82

He's deep cherry red, with body, shape, and calving ease deluxe! His dam is a tremendously sound made, perfect uddered, easy keeping, first calf heifer that milked like a dream for her first trip around the sun.

Peacemaker himself is flawless in his feet and leg structure, balanced in his angles, smooth shouldered, tight chested and upfronted. He is positioned to make incredible females. Peacemaker's sire is a Rioja son that is a full brother to the popular 2019 Reserve National Champion female also raised and exhibited by the Rathmann family that was touted for being near perfect in her basic build. This is a versatile bull that will be the "Peacemaker" with cows that need to be upgraded in their function.

## DETOUR

RAAA 1352939 | BREED RED ANGUS | ACT BW 89  
 Owned with Texas CDS Cattle



5L NORSEMAN KING 2291

**SIRE** RED RMJ REDMAN IT  
 CROWFOOT KURUBA 4033P

RED LAZY MC SMASH 41N

**DAM** RED LAZY MC BESS 12S  
 RED LAZY MC BESS 73N

CED	BW	WW	YW
13	-2.8	.49	76

Detour won shows all over Canada as a calf. His dam was the 2008 RBC Supreme Champion Female and 2008 Canadian Angus Show Female of the Year. More important than his show career is his ability to produce. His calves are consistent in type, born effortlessly and have the "look." John went to visit Wildcat Creek and every Detour calf he saw he liked; he wanted him for our sire lineup at Griswold Cattle. He will work on heifers, and he makes the functional kind of cattle that bring a premium time and again!





# HIGH ROLLER

AHA 43875385 | BREED HEREFORD

*Owned Blagg Herefords, K Graham Blagg, Curry Herefords & Perry Show Cattle*

High Roller was the popular 2019 Reserve National Champion. He is without a doubt one of the most complete, balanced and fault-free bulls out there. High Roller is huge footed, big boned, square hipped and loaded with power. His unmatched look of balance and eye-appeal sets him into a league of his own. He was one of the most talked about bulls at the National Western Stock Show in 2020 and received praise from some of the most well respected cattlemen across the country. We have the utmost confidence that High Roller will sire elite Hereford cattle that command a premium.

CE	BW	WW	YW	MILK
-6.5	.56	68	106	34

**SIRE**

STAR TCF LOCK-N-LOAD 300W  
**TFR KU ROLL THE DICE 1326**  
 LH LANGFORD LADY 0253

**DAM**

TFR HIGH COTTON 328 ET  
**CH MAGIE 8023**  
 CH GOLDEN CAT 4016 1ET



**ABOVE** High Roller Daughters



# eisenhower

AHA 44230712 | BREED POLLED HEREFORD | SCROTAL 43.5

*Owned with Kellen, Katie & Kelvin Jorgensen*

**BRING ON THE POWER!** Long bodied, with plenty of rib, shape, depth, and structure! You will be hard pressed to find a bull that has this much power and substance and still moves and handles himself this well. With the balance correctness and eye appeal he's the kind that stops and hits a pose and turns

your head time and again. From the Hoffman program that is known for consistent quality comes one of the exciting new Hereford sires of the year! Jason said, "This bull will be better than his sire. More expanded and softer in his rib, bigger and deeper bodied throughout, he is a herd bull."



CE	BW	WW	YW	MILK
-0.4	3.4	61	101	.32

UPS SENSATION 2296 ET  
**H MONTGOMERY 7437 ET**  
 RST GAT NST Y790D LADY 548 ET

SIRE

DAM

CRR 719 TULO 928  
**BRL ENVY 401A**  
 BRL CATE W4100



# REDEMPTION

AICA EM893465 | BREED CHAROLAIS | ACT BW 90

*Owned with Cody Cattle Company,  
Wright Charolais & Steve Smith Country Charolais*

Redemption represents generations of genetic predictability in the Charolais breed. You will be hard pressed to find an individual that combines the power, performance and structural integrity, along with the most unique and perfect design and impeccable look in a purebred Charolais, like it is in Redemption. His dam was the 2014 American Royal Junior Show Grand Champion Female and full sister to the current National Champion Female, WC Kendall 5173. Redemption is that rare find of power, look and predictable pedigree that can truly change your cowherd in **ONE GENERATION**. If you're serious about the Charolais business or that discerning cattleman that appreciate the good ones, **CCC WC REDEMPTION IS THE ANSWER.**

Redemption himself in a short show career was selected as the 2017 American Royal Breeders Bull Classic Champion Bull, was the anchor Bull in the Champion Pen Of 5 Charolais Bulls at the 2018 National Western Stock Show and the National Spring Bull Calf Champion for Wright Charolais and Cody Cattle Company.

CE	BW	WW	YW	MILK
4.7	11	70	123	28

LT RUSHMORE 8060 PLD  
**SIRE** CCC WC RESOURCE 417 P  
 WC CCC BLUE GIRL 1528 P

TR PZC RAPID FIRE 9775 ET  
**DAM** WC ROLLS ROYCE 3177 PET  
 WCCC MISS ALLIANCE 428





## MRRC LEGAL

NALF LFM2120934 | BREED LIMFLEX | ACT BW 80

*Owned with Ratliff Ranches*

DAMERON FIRST CLASS

**SIRE** COLBURN PRIMO 5153

SILVEIRAS SARAS DREAM 1339

TMCK DURHAM WHEAT 6030X

**DAM** RIVERSTONE CHARMED

HSF YOUR FANTASY

CED	BW	WW	YW
7	1.5	63	94

If you follow the Limousin breed Larissa is a household name, she shows up on the pulse perhaps more than any other cow. She was a Junior National Champion and swept the Nation in purple and her daughters have followed suit, the biggest question at the show is which one of her daughters the judge is going to like the most.

We all know well the power of a cow family, for those of you chasing good cattle, here is a bull that is going to help get you there! Top and bottom he is stacked with the pedigrees of Champions. If you are serious about raising good Limousin cattle, buy a cane, breed your cows, and then get ready to start marketing the great ones! If you use him on a purebred Angus cow you will have progeny that can be registered as LimFlex.



## BOSS LAKE RED EYE

NALF LFM2120934 | BREED PUREBRED LIMOUSIN | ACT BW 76

*Owned by Boss Lake*

WULF'S ZIPLOCK N922Z

**SIRE** LFLC BANK ACCOUNT 701B

LFLC 701X XTRA GOOD

COTTAGE LAKE BORDER AGENT

**DAM** BOSS LAKE MS MOLLY 814F ET

UTO OLGA 498A

CED	BW	WW	YW
10	3.6	66	96

The purebred Limousin bull we have all been waiting for! 100% and Homo Polled, this elite herd sire is dark cherry red and phenotypically a standout. Outcross to many mainline pedigrees, Boss Lake Redeye is backed one of the most winningest purebred cow families including two top five finishes at Junior Nationals and most currently Champion Jr Limousin Female at OKC.

207K is geared to make them stout, dimensional and functional all while keeping that look and unique style that the industry demands. He boasted a 37cm scrotal and froze high quality semen at only 12 months of age. An outlier since birth, this is one bull you aren't going to want to leave off your semen order!

# just chillin



PHAC/THC/DSF

ACT BW 83

Thompson 7/35 was the highlight and high selling female in the 2017 South Dakota pasture sales and was the definition of what a great female should look like. She was IVF'd as a virgin heifer and produced three ET calves sired by Getcha Some and Here I Am.

Just Chillin has produced as much hype and excitement as any bull we have added to the lineup in a long time, he is big topped, the right shape, with rib design, a big massive foot, big boned, and loaded with look and design. Quality counts every time, breed them right and Chill Out!

*Owned with Chad Thompson & Lucey Show Cattle*

*getcha some x maternal made x monopoly*



## *here i am* x merlin

Over the last few years, Here I Am has become synonymous in the club calf business for dominating show rings across the country. In our search to find elite individuals to add to our sire battery in the club calf business, we searched the entire country for the best Here I Am son.

We found him in Madison, South Dakota at Vanhove Cattle Company. Good To Go, combines the unique blend of power and structure in a maternal-based program. His dam is one of the most impressive young GCC Merlin (**GCC WHIZARD 125W x IRISH WHISKEY**) daughters in the Vanhove program, which only strengthens the predictability of future champions out of this tremendous stout, huge footed, massive hiped, soft middled, chubby, freaky necked, shaggy haired and ultrasound sire of the future. Proven maternal foundation.

*Owned with Vanhove Cattle*

# good to go

# benton COUNTY

From the program that keeps the maternal, the function, the champions, and the look comes one we are pumped to stand behind, **BENTON COUNTY**. It's not often we put our name on a steer bull but it's not often you find one like this. A Here I am with Whizard and Whiskey on the bottom side, you're going to see him in his work clothes but don't worry, he's going to be the kind that dresses up! He's as cool as the person that raised him, that's saying something! Out of donor Whizard female that looks and breeds like a powerhouse cow. Raised by JB Show Steers, grand dam raised by Merle and Tucker Morris. Here I Am x Whizard x Whiskey Granddaughter.

It's been a long time since we have been this pumped up on a steer bull. He's all there and he's all good. I know this won't matter to some of you but it should, his scrotal looks to be around 40 cm, he froze semen at a year, and he wants to breed cows, you can read between all the lines. If you are breeding for steers line up!

*Owned with JB Show Steers*



*here i am x whizard x monopoly*



**ABOVE** Maternal Sister to Benton County



## **FASTBALL**

**AHA 3542175 | BREED** HEREFORD  
CRR 719 CATAPULT 109 X BK COOL BEANS 5707C  
*Owned with Hayes, Buck Cattle  
& Chapman Ranches LLC*



## **CUSTOM MADE**

**AHA 43457417 | BREED** HEREFORD  
CRR ABOUT TIME 743 X TCC MISS SHELBY 82  
*Owned with John Sullivan  
& Ronnie and Kayla Robinson*



## **CHILL FACTOR**

**AMAA 209063 | BREED** 3/4 MAINE  
CUNIA X MS COLDFRONT 2066  
*Owned with the Hammertime Syndicate*



## **ALL THAT MATTERS**

**AMAA 452463 | BREED** PUREBRED MAINE  
MINN HARD WHISKEY 591Y X MINN PORSCHE 109W  
*Owned with Minnaert Show Cattle*



## **FLIPSIDE**

HERE I AM X GOLD STANDARD X WHIZARD  
*Owned with Brent Tolle*



## **MUFASA**

IN GOD WE TRUST X SOLID GOLD X RSVP X ROCKSTAR  
*Owned with Franke Cattle*

ANGUS	REG	PRICE	PAGE
ANDY	19519193	\$30	59
BIPARTISAN	19871908	\$50	45
BELLRINGER	20363001	\$50	44
BEDLAM	20476644	\$50	55
BLACK WATCH	16082838	\$30	
BRUNO	20316046	\$40	47
CLASS TIME	17770312	\$30	
COLEMAN RITO 990	16584347	\$30	
DR PHIL	20400918	\$30	49
DUFF ANGUS 011	16845825	\$30	
FORTUNATE SON	20522600	\$50	51
GOOD TIMES	19923328	\$100	42
JETSET	15944145	\$20	60
JUSTIFY	20192444	\$30	52
JUST RIGHT	13492456	\$50	53
KING GEORGE	17769354	\$30	60
LEGACY	16855217	\$30	
LONESTAR X902	17000928	\$20	
MONEY EARNED	18989403	\$40	48
MOTO MOTO	19519185	\$30	52
NEW EDITION	15459486	\$30	53
NEW GAME	18324437	\$30	60
NEW LOOK	13974138	\$30	
OMAHA	17570562	\$30	
PLAY IT SAFE	20095351	\$30	57
RECALL 2	19590482	\$30	59
RELAX	20757458	\$30	56
SANDMAN	18585679	Auction	
STANDARD DESIGN	19068026	\$30	60
STANDARD TIME	18593292	\$30	60
STYLE 2	19903097	\$30	50
TIMELESS	20716101	\$50	43
UNREAL	20490805	\$30	58
VEGAS	20320127	\$50	46

CHAROLAIS	REG	PRICE	PAGE
REDEMPTION	EM893465	\$50	90

CHI	REG	PRICE	PAGE
BUCKET LIST	414345	\$40	82
MONEY IN THE BANK	379975	\$30	
PERFECT STORM	390361	\$30	
WHO DAT CLASS	392600	\$50	83

COMPOSITE	PRICE	PAGE
BENTON COUNTY	\$30	94
FLIP SIDE	\$30	94
GOOD TO GO	\$30	93
JUST CHILLIN	\$30	92
MUFASA	\$30	94
NO SURPRISE	\$30	
SOMETHING ELSE	Auction	

LIMOUSIN	REG	PRICE	PAGE
LEGAL	LFM212093	\$30	91
RED EYE	CPM4116805	\$50	91

HEREFORD	REG	PRICE	PAGE
CUSTOM MADE	43457417	\$30	92
EISENHOWER	P4430712	\$75	89
FASTBALL	390361	\$100	92
HIGH ROLLER	43875385	Quote	88

MAINE-ANJOU	REG	PRICE	PAGE
ALL THAT MATTERS	452463	\$30	94
BELMONT	531446	\$40	62
CERVEZA	328874	\$30	81
CHEEBA	497402	\$30	
CHILL FACTOR	209063	\$30	94
DATA BANK	464046	\$50	63
DONE DEAL	505405	\$30	81
DOUBLE THREAT	539826	\$30	73
END GAME	503082	Auction	
FAME	505122	\$40	68
FULL TILT	495115	\$30	79
GARTH	447000	\$125	69
GAME ON	505128	\$40	64
HARDY	523345	\$30	
HARD WHISKEY	418906	\$40	

MAINE-ANJOU	REG	PRICE	PAGE
IRISH WHISKEY	294939	\$300	
MONEY MOVES	549722	\$30	72
MAKIN TIME	496260	\$30	75
MASTERPIECE	502797	\$30	71
MATERNAL MADE	459900	\$200	74
NEW BEGINNING	486141	\$30	80
OLE MONEY	525856	\$40	65
ORIGINAL GANGSTER	525856	\$30	78
REFLECTION	549115	\$40	66
PROMISE KEEPER	537079	\$40	67
SAFETY PLAN	539577	\$30	71
SPOT ON	536810	\$30	76
TAKE ACTION	522726	\$30	80
TURN IT UP	546999	\$30	77
TRUE MEASURE	502804	\$30	81

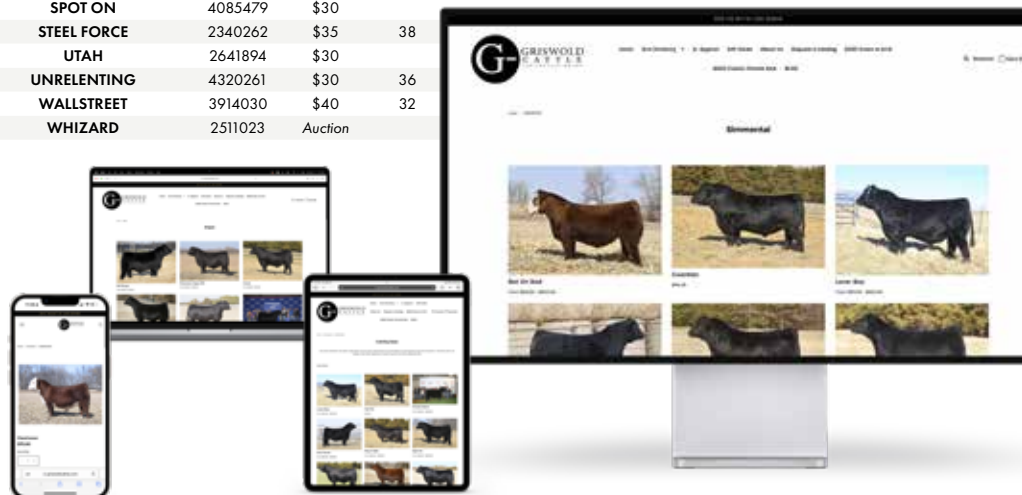
RED ANGUS	REG	PRICE	PAGE
DETOUR	1352939	\$30	86
HARVEST MOON	4646137	\$30	85
PEACEMAKER	4340131	\$30	86
RED EAGLE	3753947	\$30	84

SIMMENTAL	REG	PRICE	PAGE
ALL RIGHT	4100635	\$50	26
ANDERSON BEAN	3517845	\$30	39
BANDWAGON	2757819	\$30	
BANK ON IT	3808104	\$50	16
BANK VAULT	3785497	\$30	
BET ON RED	3808091	\$50	15
BOLD MOVE	3968329	\$40	22
BROKER	2531081	Auction	
CHASE THIS	4173668	\$30	23
COUNTY O	3289219	\$50	34
DEW NORTH	3141837	\$40	
FAMILY TRADITION	3336318	\$50	38
GENOA	4155667	\$40	20
GUARDIAN	3563436	\$40	27
HAMMERTIME	3185062	\$50	39
HOUSTON	2537200	\$40	39
HUSKER	3542175	\$30	39
LIVIN THE DREAM	4305557	\$75	31
LOADED UP	2654155	\$125	37
LOVER BOY	2983443	\$50	28
MASTERMIND	4173692	\$30	25
MOMENTUM	2568769	\$30	39
NEW CALIFORNIA	3977997	\$40	21
NEXT GENERATION	4325256	\$40	24
NIGHT OWL	4284092	\$40	30
ON THE MARK	3210989	\$40	37
ON THE RUN	4325400	\$50	18
PASSWORD	3336324	\$40	
PAYROLL	3992818	\$50	19
PRIVATE STOCK	3775641	\$50	29
REAL TIME	3691435	\$30	39
RECKONING	3553633	\$40	36
SAM	3565879	Auction	10
I AM SAM (CLONE)	4325771	\$50	13
SAM I AM (CLONE)	4325772	\$50	13
SHOCKER	3001711	\$30	35
SPOT ON	4085479	\$30	
STEEL FORCE	2340262	\$35	38
UTAH	2641894	\$30	
UNRELENTING	4320261	\$30	36
WALLSTREET	3914030	\$40	32
WHIZARD	2511023	Auction	

CALVING EASE	REG	PRICE	PAGE
ALL RIGHT	4100635	\$50	26
BEDLAM	20476644	\$50	55
FULL TILT	495115	\$30	79
LEGACY	6855217	\$30	
LOVER BOY	2983443	\$50	28
NIGHT OWL	4284092	\$40	30
ORIGINAL GANGSTER	525856	\$30	78
PLAY IT SAFE	20095351	\$30	57
PEACEMAKER	4340131	\$30	86
PRIVATE STOCK	3210989	\$50	29
RECALL 2	19590482	\$30	59
RELAX	20757458	\$30	56
UNREAL	20490805	\$30	58
SPOT ON	536810	\$30	76

SEXED	REG	PRICE	PAGE
ALL RIGHT	4100635	\$250	26
BELMONT	531446	\$250	55
BET ON RED	3808091	\$300	15
BOLD MOVE	3968329	\$250	22
DATA BANK	464046	\$300	63
DR PHIL	20400918	\$250	49
GAME ON	505128	\$250	64
GOOD TIMES	19923328	\$400	42
LOVER BOY	2983443	\$350	28
MAKIN TIME	496260	\$250	75
NEW CALIFORNIA	3977997	\$250	21
PAYROLL	3992818	\$250	19
PLAY IT SAFE	20095351	\$150	57
PRIVATE STOCK	3210989	\$250	29
SAM	3565879	Auction	10
SPOT ON	536810	\$200	76
STYLE 2	19903097	\$300	50
TAKE ACTION	522726	\$200	80
VEGAS	20320127	\$350	46

order  
SEMEN  
on file at  
www.griswoldcattle.com





*9313 E 6th Avenue  
Stilwater, Oklahoma 74074*

2024 SIRE DIRECTORY

# GRISWOLD

— | C A T T L E | —