

Qty. Description

1 NBG 50-32-200/206 AAE2CESBQQEMW1



Product No.: [99803085](#)

Non-self priming, single-stage centrifugal pump according to AS2129 table E.

The pump is for the pumping of thin, clean or slightly contaminated liquids without abrasive or long-fibred solids.

The pump is directly coupled with an IEC-flanged 3-phase AC motor.

The impeller is hydraulically as well as dynamically balanced.

The pump has the following characteristics:

- flange dimensions according to EN 1092-2,
- Cast iron volute pump housing,
- stainless steel shaft and Cast iron impeller and bronze wear rings,
- unbalanced mechanical shaft seal according to EN 12756.

Controls:

Frequency converter: NONE

Pressure sensor: N

Liquid:

Pumped liquid: Water

Liquid temperature range: -25 .. 120 °C

Selected liquid temperature: 20 °C

Density: 998.2 kg/m³

Technical:

Pump speed on which pump data are based: 2925 rpm

Rated flow: 33.79 m³/h

Rated head: 46.59 m

Actual impeller diameter: 206 mm

Nominal impeller diameter: 200

Shaft seal arrangement: Single

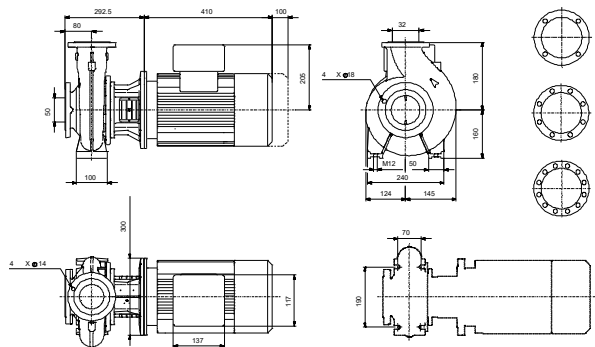
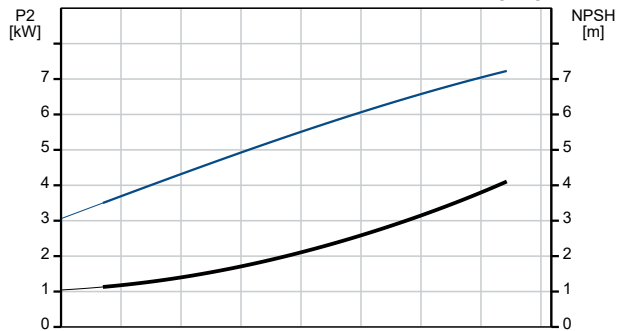
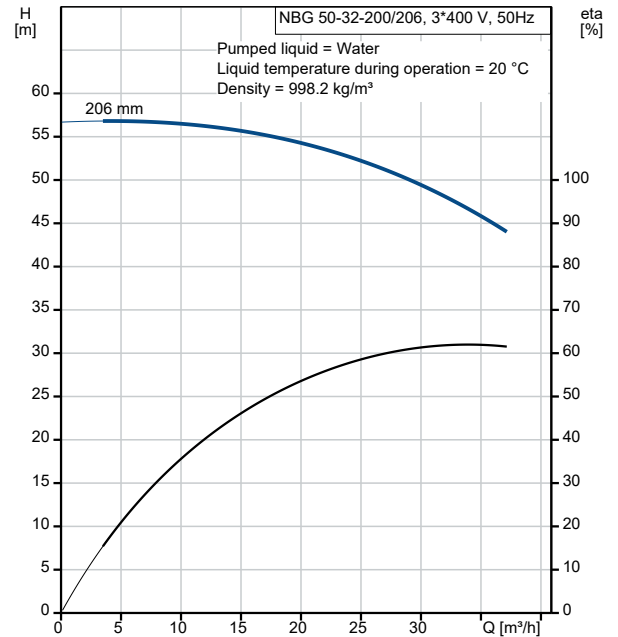
Code for shaft seal: BQQE

Curve tolerance: ISO9906:2012 3B2

Bearing design: Standard

Qty.	Description
	<p>Materials:</p> <p>Pump housing: Cast iron EN-GJL-250 ASTM class 35</p> <p>Wear ring: Bronze</p> <p>Impeller: Cast iron EN-GJL-200 ASTM class 30</p> <p>Shaft: Stainless steel EN 1.4401 AISI 316</p> <p>Internal pump house coating: CED</p> <p>Installation:</p> <p>t max amb: 40 °C</p> <p>Maximum operating pressure: 16 bar</p> <p>Pipe connection standard: AS2129 table E</p> <p>Size of inlet connection: DN 50</p> <p>Size of outlet connection: DN 32</p> <p>Pressure rating for connection: PN 16</p> <p>Bearing lubrication: Grease</p> <p>Pump housing with feet: Yes</p> <p>Support block (Yes/No): N</p> <p>Electrical data:</p> <p>Motor type: WEG</p> <p>IE Efficiency class: IE3</p> <p>Rated power - P2: 7.5 kW</p> <p>Mains frequency: 50 Hz</p> <p>Rated voltage: 3 x 380-660/415-690 V</p> <p>Rated current: 14,3-8,23/13,8-8,06 A</p> <p>Cos phi - power factor: 0.88</p> <p>Rated speed: 2925 rpm</p> <p>Efficiency: IE3 90,6%</p> <p>Motor efficiency at full load: 90.6-90.8 %</p> <p>Motor efficiency at 3/4 load: 90.6-90.3 %</p> <p>Number of poles: 2</p> <p>Enclosure class (IEC 34-5): IP55</p> <p>Insulation class (IEC 85): F</p> <p>Motor No: 99737181</p> <p>Others:</p> <p>Minimum efficiency index, MEI ≥: 0.68</p> <p>Net weight: 112 kg</p> <p>Gross weight: 129 kg</p> <p>Shipping volume: 0.315 m³</p> <p>Country of origin: CN</p> <p>Custom tariff no.: 8413709062</p>

Description	Value
General information:	
Product name:	NBG 50-32-200/206 AAE2CESBQQEMW1
Product No:	99803085
EAN number:	5713834517044
Price:	AUD 3332
Technical:	
Pump speed on which pump data are based:	2925 rpm
Rated flow:	33.79 m ³ /h
Rated head:	46.59 m
Actual impeller diameter:	206 mm
Nominal impeller diameter:	200
Shaft seal arrangement:	Single
Shaft diameter:	24 mm
Code for shaft seal:	BQQE
Curve tolerance:	ISO9906:2012 3B2
Pump version:	A
Bearing design:	Standard
Materials:	
Pump housing:	Cast iron
Pump housing:	EN-GJL-250
Pump housing:	ASTM class 35
Wear ring:	Bronze
Impeller:	Cast iron
Impeller:	EN-GJL-200
Impeller:	ASTM class 30
Shaft:	Stainless steel
Shaft:	EN 1.4401
Shaft:	AISI 316
Internal pump house coating:	CED
Material code:	C
Code for rubber:	E
Installation:	
t max amb:	40 °C
Maximum operating pressure:	16 bar
Pipe connection standard:	AS2129 table E
Size of inlet connection:	DN 50
Size of outlet connection:	DN 32
Pressure rating for connection:	PN 16
Bearing lubrication:	Grease
Pump housing with feet:	Yes
Support block (Yes/No):	N
Connect code:	E2
Liquid:	
Pumped liquid:	Water
Liquid temperature range:	-25 .. 120 °C
Selected liquid temperature:	20 °C
Density:	998.2 kg/m ³
Electrical data:	
Motor type:	WEG
IE Efficiency class:	IE3
Rated power - P2:	7.5 kW
Mains frequency:	50 Hz
Rated voltage:	3 x 380-660/415-690 V
Rated current:	14,3-8,23/13,8-8,06 A
Cos phi - power factor:	0.88
Rated speed:	2925 rpm
Efficiency:	IE3 90,6%





Company name:

Created by:

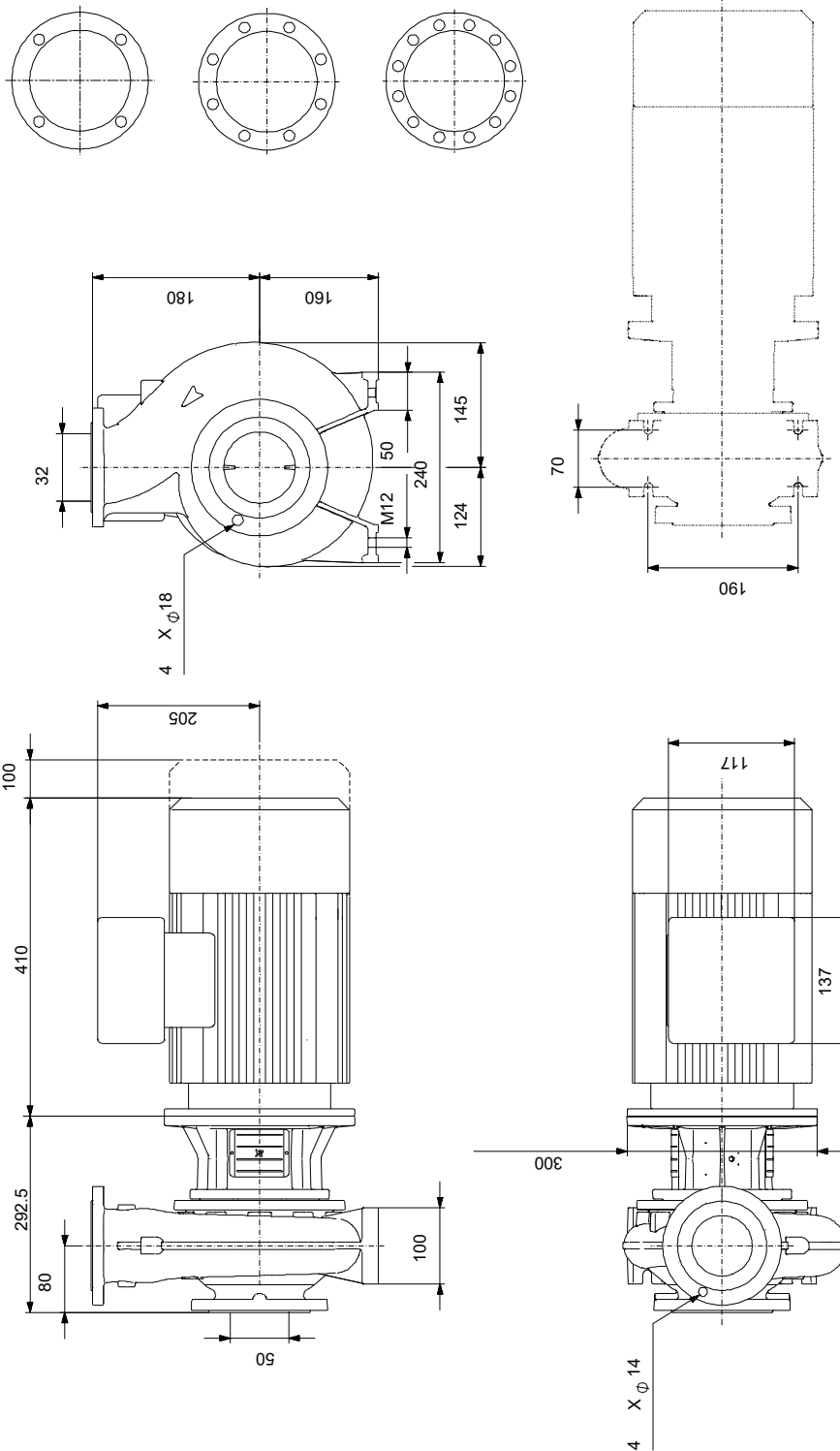
Phone:

Date:

1/4/2022

Description	Value
Motor efficiency at full load:	90.6-90.8 %
Motor efficiency at 3/4 load:	90.6-90.3 %
Number of poles:	2
Enclosure class (IEC 34-5):	IP55
Insulation class (IEC 85):	F
Built-in motor protection:	NONE
Motor No:	99737181
Mount. design. acc. IEC 34-7:	IM B5
Controls:	
Frequency converter:	NONE
Pressure sensor:	N
Others:	
Minimum efficiency index, MEI ≥:	0.68
Net weight:	112 kg
Gross weight:	129 kg
Shipping volume:	0.315 m ³
Country of origin:	CN
Custom tariff no.:	8413709062

99803085 NBG 50-32-200/206 AAE2CESBQQEMW1 50 Hz



Note! All units are in [mm] unless others are stated.
 Disclaimer: This simplified dimensional drawing does not show all details.