

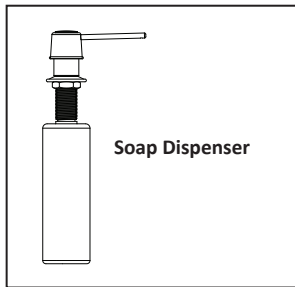
INSTALLATION INSTRUCTIONS



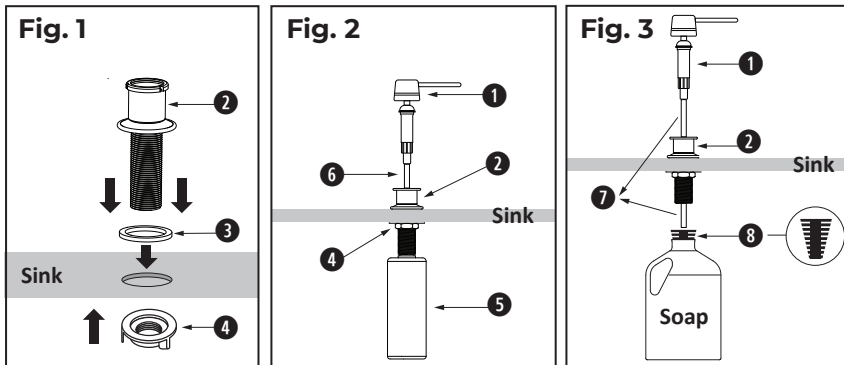
⚠ ATTENTION ⚠

- PRIOR TO INSTALLATION:** Check all parts carefully to ensure no damage occurred in transit and no pieces are missing. **DO NOT** dispose of any packaging until you are satisfied with this product.
- SAFETY PRECAUTIONS:** Your installation must comply with all local plumbing codes. Have a qualified tradesman install or approve your plumbing installation. Always wear safety goggles and gloves during installation to avoid personal injury.
- NEED HELP?** Please call us at 1 (773) 265-2371 or contact us via email at support@tehilalaundry.com with any questions. Our normal business hours are Monday to Friday from 8 a.m. to 5 p.m. CST.
DO NOT RETURN THE UNIT TO THE PLACE OF PURCHASE BEFORE CONTACTING US AT 1 (773) 265-2371 OR VIA EMAIL AT SUPPORT@TEHILALAUNDRY.COM.

WHAT'S INCLUDED IN THE BOX



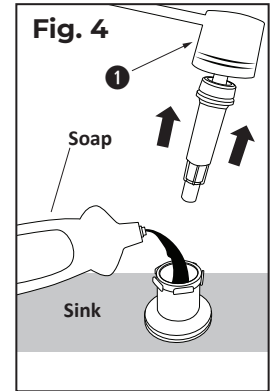
INSTALLING THE SOAP DISPENSER



- From above the sink: insert the **Base Assembly** 2 and **Rubber Gasket** 3 into the sink hole opening (see Fig. 1).
- From underneath the sink: secure the base assembly to the sink using the **Plastic Wing Nut** 4 (see Fig. 1).

USING THE SOAP DISPENSER WITH THE INCLUDED BOTTLE (see Fig. 2)

- Screw the **Bottle** 5 into the **Base Assembly** 2 from underneath the sink.
- Fill the bottle by pouring soap through the base assembly from above the sink after sink is completely installed (see Fig. 4).
- Attach the 7 in. **Tubing** 6 to the bottom of the **Head Assembly** 1.



USING THE SOAP DISPENSER WITH THE INCLUDED 3 FT. FLEXIBLE TUBING AND RUBBER HOSE GUIDE (see Fig. 3)

- Attach one end of the **3 ft. Flexible Tubing** 7 to the bottom of the **Head Assembly** 1.
- From above the sink, run the assembled **3 ft. Flexible Tubing** 7 through the **Base Assembly** 2.
- Take the cap off from the bottle of **Soap** (sold separately).
- After the sink is completely installed, insert the **Rubber Hose Guide** 8 into the top of the soap bottle, and slide other end of the **3 ft. Flexible Tubing** 7 through the **Rubber Hose Guide** 8 into the **Soap**.
- The **Flexible Tubing** 7 can be cut shorter if needed.

1-YEAR LIMITED WARRANTY INFORMATION

TEHILA® products are backed by a 1-year limited warranty. TEHILA warrants that its products will be free from defects in material and workmanship for a period of 1 year from the date of purchase. Proof of purchaser's receipt is required to receive this warranty. A replacement for any defective part will be supplied free of charge for installation by you. This 1-year warranty covers the original consumer purchaser only and **DOES NOT INCLUDE BUSINESS, COMMERCIAL, OR INDUSTRIAL USE OF THIS PRODUCT.** This warranty shall not apply to goods which have been subject to accidents, negligence, installation error, product abuse, or misuse. In no event will TEHILA be liable for any consequential, indirect, or special damages, nor shall TEHILA be liable for transportation, labor, or other charges arising out of the removal or reinstallation of its products. Defective parts must be made available for inspection by a TEHILA employee or an authorized representative. Some states do not allow limitations on how long an implied warranty lasts, so the above limitation may not apply to you.

WARRANTY CLAIM PROCEDURES AND REQUIREMENTS:

To obtain TEHILA® warranty service, the customer will need to write to TEHILA explaining the defect, and include proof of purchase receipt, your name, phone number, email address, and mailing address. Information can be emailed to support@tehilalaundry.com or mailed to **TEHILA® (Warranty Department), 990 E North Ave., Glendale Heights, IL 60148.**

INSTRUCTION: PII601JS6550

TEHILALAUNDRY.COM | support@tehilalaundry.com

We reserve the right to make revisions in the design and information without notice | Image is for reference only, styles varies by models
SKU Numbers: 601JS6550BLK, 601JS6550CP, 601JS6550SS

ID: 27820
Rev. 03/01/2023

PG. 1