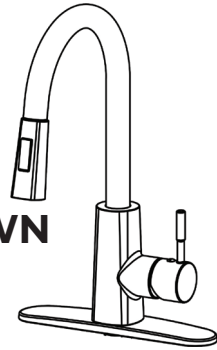


# INSTALLATION INSTRUCTIONS

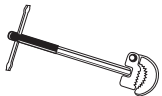


For Models: 015 JS10510

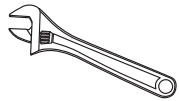
## SINGLE HANDLE KITCHEN PULL-DOWN FAUCET



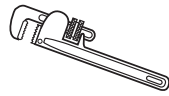
### TOOLS



BASIN WRENCH



ADJUSTABLE WRENCHES



PIPE WRENCH



PHILLIPS SCREWDRIVER



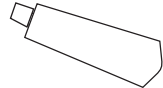
PLIERS



THREAD SEAL TAPE



PROTECTIVE GOGGLES



SILICONE SEALANT



SOFT CLOTH

### MAINTENANCE

TEHILA™ faucets are crafted with the skill and quality to last a lifetime. By following the instructions in this booklet you will enjoy this quality item for years to come. To clean, wipe gently with a soft damp cloth, then wipe dry. TEHILA finishes are very durable. However, to assure a long lasting luster, harsh abrasives or polishes should be avoided.

### SAFETY TIPS

Turn off the water before loosening any connections or disassembling the faucet. When working underneath a sink, protect your eyes from any dust or dirt by wearing protective goggles.

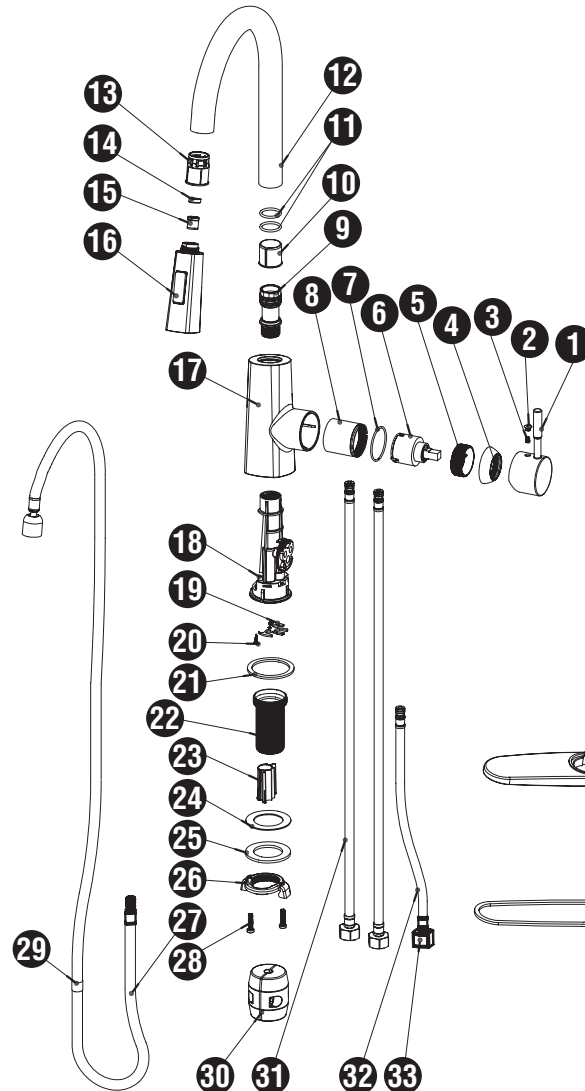
### IMPORTANT POINTS

Most faucet problems can be fixed by tightening a nut or connection or replacing a washer. Check supply line connections for any leaks and tighten if necessary. Don't over tighten any supply line connections.

### NEED HELP?

We take pride in our customer service and your satisfaction is very important to us. If you have any questions or problems, **please contact us at [help@jsupplies.com](mailto:help@jsupplies.com)**. Thank you for your business.

### PARTS DIAGRAM / LIST

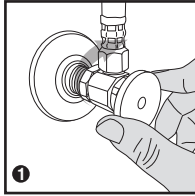


- 1 Handle
- 2 Hot/cold button
- 3 Set screw
- 4 Bonnet
- 5 Bonnet nut
- 6 Cartridge
- 7 Washer
- 8 Cartridge housing
- 9 Spout connector
- 10 Spout sleeve
- 11 O-rings (2)
- 12 Spout
- 13 Sleeve
- 14 Washer
- 15 Check valve
- 16 Pull-down spray
- 17 Valve body
- 18 Inner body
- 19 Clip
- 20 Screw
- 21 Washer
- 22 Faucet shank
- 23 Sleeve
- 24 Rubber washer
- 25 Metal washer
- 26 Mounting nut
- 27 Quick connect spray hose assembly
- 28 Screws (2)
- 29 Weight label
- 30 Weight
- 31 Inlet hoses (2)
- 32 Quick connect outlet hose
- 33 Quick-connect button
- 34 Deck plate
- 35 Putty Plate

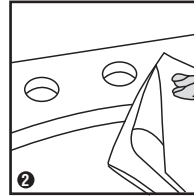
## PREPARATION / ASSEMBLY (STEPS 1-9)

**NOTE:** Prior to installation, verify that the 20" integrated supply lines are long enough to attach to your water supply shut-off valves beneath the sink. If the integrated supply lines are too short, a 3/8" compression union and a 3/8" compression X 3/8" compression supply line will be needed for each connection that is too short. Both are available at most hardware stores and home centers.

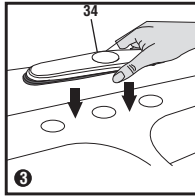
1. Shut off the water supply from the stop valves by turning the handle clockwise and remove the existing faucet from the sink.



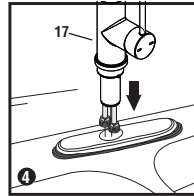
2. Remove any dirt or plumber's putty from around the faucet holes on the sink.



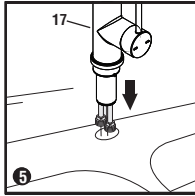
3. If installing with the deck plate (34), place the putty plate (35) onto the deck plate. Apply a thin bead of silicone sealant to the underside of the putty plate and set it on the appropriate sink holes.



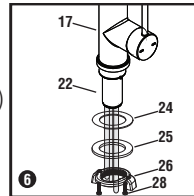
4. Insert faucet into the deck plate.



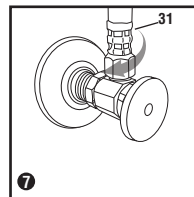
5. For 1 hole installations, insert the faucet directly into the sink hole.



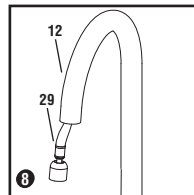
6. To secure the faucet to the sink, slide the rubber washer (24), then the metal washer (25) and the mounting nut (26) up the hoses to the faucet shank (22). Hand thread the mounting nut up to the top. Verify that faucet is positioned correctly, then tighten the 2 mounting nut screws (28). Do not attach the pull down spray at this time.



7. Attach the integrated supply lines (31) to the water supply valves and tighten. Be careful not to over tighten or twist the supply lines.



8. With the faucet handle in the off position, open the hot and cold water supply valves. Pull the hose down from the spout, open the hot and cold water supply valves. Pull the hose down from the spout and point it into the drain. Turn on faucet in the mixed hot / cold water position. Run the water for 1 minute to flush out any debris. Turn water off and attach the pull down spray (16) to the hose.



9. Check all connections for leaks. If leaks are present, tighten slightly until leak stops.

## TROUBLESHOOTING

If a faucet installation doesn't deliver water properly or leaks, finding the cause and fixing it can be easy.

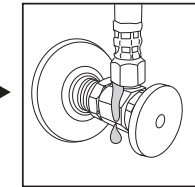
### PROBLEM:

Water leaks from supply lines

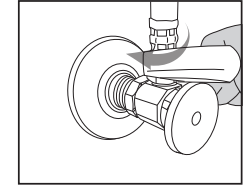
### CAUSE:

Damaged supply line or loose supply line connection

### ACTION:



Check the water supply line connections at the shut-off valve.



Tighten the nuts slightly on the supply lines with a wrench. Don't over tighten any supply line connections.

## 1-YEAR LIMITED WARRANTY INFORMATION

TEHILA™ products are backed by a 1-Year Limited Warranty. TEHILA warrants that its products will be free from defects in material and workmanship for a period of 1 year from the date of purchase. Proof of purchaser's receipt is required to receive this warranty. A replacement for any defective part will be supplied free of charge for installation by you. This 1-year warranty covers the original consumer purchaser only and **DOES NOT INCLUDE BUSINESS, COMMERCIAL OR INDUSTRIAL USE OF THIS PRODUCT**. This warranty shall not apply to goods which have been subject to accidents, negligence, installation error, product abuse or misuse. In no event will TEHILA be liable for any consequential, indirect or special damages, nor shall TEHILA be liable for transportation, labor, or other charges arising out of the removal or reinstallation of its products. Defective parts must be made available for inspection by a TEHILA employee or its authorized representative. Some states do not allow limitation on how long an implied warranty lasts, so the above limitation may not apply to you.

### WARRANTY CLAIM PROCEDURES AND REQUIREMENT:

To obtain TEHILA™ warranty service, customer will need to write to TEHILA explaining the defect, and include proof of purchase receipt, your name, phone number, email address and mailing address. Information can be emailed to [support@utility-sink.com](mailto:support@utility-sink.com) or mail to **TEHILA™ (Warranty Department), 990 E North Ave., Glendale Heights, IL 60148.**