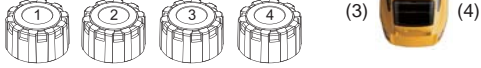


During sensor installation please check and make sure no crack or aging on the rubber part, and should be checked regularly to enhance driving safety.

1. THE INSTALLATION OF TIRE PRESSURE SENSORS

As each sensor has its own position, you have to make sure its pre-set position. When inserting batteries in every sensors please don't mix up sensor caps and every sensors have own positions and sensors map could give guidance for user to install.

- (1) means " Front Left Tire ".
- (2) means " Front Right Tire".
- (3) means " Rear Left Tire ".
- (4) means " Rear Right Tire ".



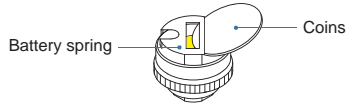
⚠ Make sure sensor body won't mix up with other sensor cap.

Note:

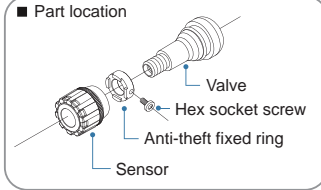
Due to the sensor consumes very small battery power, so that the remaining battery power could be retained for some time, in the process of resetting the battery and cause malfunctions. Battery replacement is recommended, should be discharged on the sensor, please follow these steps:

A. Could use metal objects, such as coins, keys... etc., into the sensor at the same time touching the battery metal holder and yellow color area (battery holders negative), to achieve the power discharge. As shown in the photo.

B. Then re-insert the lithium battery into sensor.



2. ANTI-THEFT TOOL FOR SENSOR (OPTIONAL)

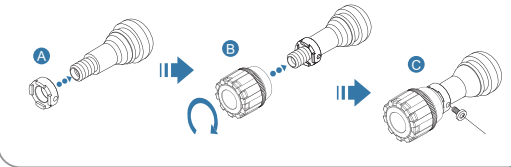


⚠ Screw and ring tighten distance is 0.7mm.

⚠ Make sure the screw is facing outward.

※ Hex key size : ϕ 2.5mm

- A. Place the ring on the valve.
- B. Install the sensor (turn 5~7 times).
- C. Use hex key to tight anti theft ring (torque 0.71kg-cm (6.95N.cm)) make sure the ring is not loose.

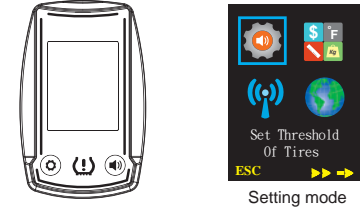


3. GRAPHIC USER INTERFACE DESCRIPTION

※ Operation when car is stopped ※

4. OPERATING INSTRUCTIONS

When press the left button for about three seconds, the TFT monitor will show setting mode. There are four main selections can be choose as Alarm setting, Measurement setting, New sensor setting, Language setting. Under this mode, the right button is the select button , the left button is the quit button . When press the right button for three seconds is the confirm button . If in setting mode idle for 15 seconds will change to normal display mode.



Confirm : Press the right button for 3 seconds

Select : Press the right button once

Quit : Press the left button once

Set Threshold Of Tires

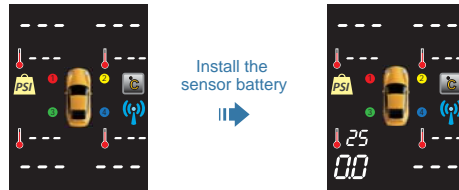
The warning range of pressure and temperature for front and rear wheel can be set separately. Under this feature, click the left button is the exit key, click the right button is to increase the warning alarm range, while holding down the left button, and press right button is to decrease the warning alarm range. After completed the setting press left button to exit.



- Low Pressure Setting. Default value=26PSI.
- High Pressure Setting. Default value=45PSI.
- Max Temperature Setting. Default value=70°C.

Learn New Sensor

This feature is mainly supplied to the solution when the sensor is missing. Because the monitor can only identify the same id group of sensors, other sensors can't be read, then just order a new sensor and re-learning the new sensor.



Set Language

Under this function, user can select a suitable language.

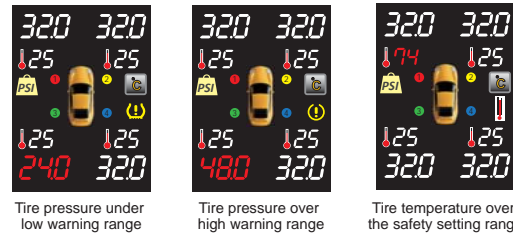
Set Unit

Monitor can support four types of pressure measuring units - PSI, KPA, BAR, Kg/Cm². Two types of temperature measuring units - °C、°F. You can choose by your own request.

5. ABNORMAL SITUATION

A. When the tire pressure or temperature exceeds a set value, the receiver will show the alarm diagram and repeat the alarm sound 10 times and backlight on for three seconds. When pressure or temperature returns to within the standard values, warning display clears the screen and return to the normal pressure display.

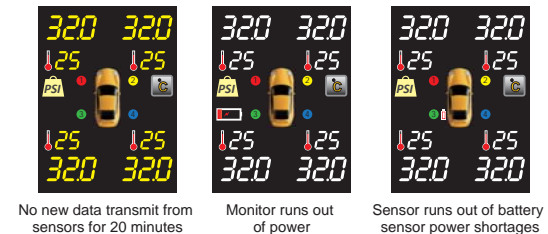
⚠ Strongly suggest that as long as tire warning is on, check tire situation first to ensure safety.



B. The data reading will show as yellow on the monitor if there is no new data transmit from sensors to monitor for 20 minutes.

C. Monitor runs out of power
Battery power in monitor will decrease by daily operation and when power level is lower to some extent, battery low indicator in TFT monitor will appear to remind driver of time to replace battery. Please change monitor battery as early as possible to make sure system function well.

D. Sensor runs out of battery sensor power shortages
Sensors for the electronic detection devices, requires the use of power-driven functions, and lithium batteries have power to limit the use of its stockpile, because the sensor battery will reduced gradually, if the sensor battery is running low then the low sensor battery will appears in figure shows, please replace the sensor lithium batteries, in order to collect accurate tire information.



No new data transmit from sensors for 20 minutes

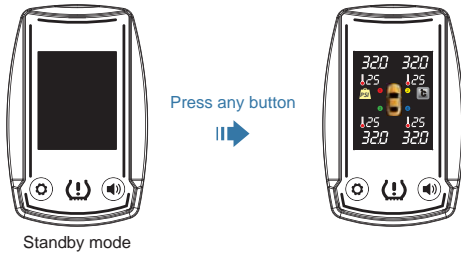
Monitor runs out of power

Sensor runs out of battery sensor power shortages

6. STANDBY MODE

After turn on, if more than 30 seconds do not press any button, monitor will automatically enter standby mode. In this mode, screen did not display any information, but still continue receive information. Therefore, power consumption is very minimal, can improve battery life. (If use external power supply will maintaining display state, does not enter standby mode.)

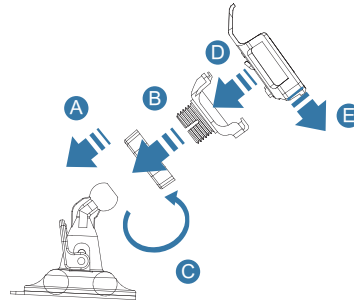
If you want to wake up monitor, press any button. At this time monitor backlight will turn on and back to normal state. This is last time receive pressure value, when sensor transmit new value monitor will re-update the value again. Under the energy saving mode, if there is unusual tire pressure change the monitor will activate from energy saving mode and display the unusual change with warning sound.



Standby mode

7. TFT MONITOR BRACKET INSTALLATION

- Place the fixed lock ring under bracket stand.
- Insert the holder arm base on top of the plastic ball base.
- Adjust the proper position and tighten the fixed lock ring.
- Place the mortise of holder arm base into the slot of monitor of holder.
- Press the monitor holder until heard click sound.



Note:

- Before fix bracket, chosen flat and clean surface is necessarily for better hold of bracket.
- To keep the screen clean, don't touch the surface. Handle the display unit by its edge.
- Be careful not to splash juice or other soft drinks onto the TFT monitor.
- Monitor should keep standing-up vertically. Up side down or lay down monitor could lead to dysfunction.

You can choose to use battery power or connect cigarette power cord to your car.

8. TROUBLE SHOOTING

- Indications disappear from / do not appear in the display
 - Please make sure if monitor has battery inserted.
 - Be sure to observe the correct polarity when installing the batteries.
 - Please make sure if battery has no power after use for a long time. Battery could run out of power and we suggest to replace with new battery.
 - Confirm whether the device is in standby mode, this mode is to restart automatically from energy saving mode, the energy saving mode is to minimal the power consumption of device, the user can press any button to trigger the device and turn on the device back to normal display.
 - If you use power cord, make sure if it is disconnected.
- No connection between sensors and monitor
 - Please make sure if sensors are in a configured distance. This system, should be applied in passenger car. If installed in other kind of vehicle, the system doesn't guarantee its functionality.
 - Please make sure if sensor has battery inserted.
 - Be sure to sensor the correct polarity when installing the batteries.
 - Battery has no power after use for a long time. Battery could run out of power and we suggest to replace with new battery.
 - Reinstall the sensor battery. After removing the sensor battery, conduct discharge advanced motion to the sensors, this purpose is to reset the sensor.
 - Please make sure if your sensor has mixed with other systems'. As each sensor has its unique identified number and monitor can only receive pre-loaded identified number and cannot accept other new identified number.

- When the low battery symbols appear on the monitor if the user continuous to operate may caused the monitor abnormal, the user can simply replacing new battery on the monitor and resume normal again.
- Monitor in the 'standby mode'

Temporarily park car or drive car in a stable speed, which could let monitor get into 'standby mode'. It is a special design for power-saving purpose. You can press any button to wake it up.
- Monitor falling from the windshield
 - Please make sure the surface of glass is clean and flat to give the best fitness to monitor bracket. Otherwise, the monitor could drop off.
 - When user install the suction cup, please selected slippery surface for good contact point.
- Many environmental factors cause tire pressure rise and down as well. For example, hot weather or warm tire will lead rising tire pressure.
- The pressure differences between the front and rear

Due to general vehicle engine location is in the front wheel, so during the driving process, the front wheel temperature is higher than the rear wheel, causing the front wheel pressure may be greater than the rear wheel PSI.
- Sensor temperature difference**

Running engine, exposure under the sun, constant braking or near high temperature and other factors, can easily make sensor heat conditions inconsistent and cause the difference in temperature measurement.
- If these solutions do not help improve the situation, consult your nearest dealer.

9. PRECAUTIONS

- Due to rubber valve stem aging under high temperature and expose under the sun, which may cause crack on the rubber stem, therefore, we recommended metal type of valve stem.
- Please choose the installation location carefully so that the TFT monitor will not interfere driver is on the road.
- When read through tire pressure figures from TFT monitor, please precaution about driving safety.
- Please double confirm if sensors are fitted tightly. If necessary, please spreading soap water on the valve stem to check any air leakage.
- If tire pressure is getting down or dropping quickly, please stop car immediately to find out if tire is deflated or another other problem is happening.
- The external sensor battery is lithium battery CR1632, please select the correct model. Lithium battery caution
 - Do not clip with metal object.
 - Can not swallow, recharge or throw into fire.
- Please do not operate this device while you're driving.

10. PRODUCT PACKAGE CONTENT

Items	Content	Quantity
TFT monitor		1 piece
AAA-1.5V battery		2 pieces
Cigarette power cord		1 piece
User guide		1 piece
Velcro		1 set
AC holder		1 piece
Tire pressure sensor		4 pieces
CR1632 lithium battery		4 pieces

Items	Content	Quantity
Anti-theft tool		Spanner 1 piece
		Anti-theft fixed ring 4 pieces
		Hex socket screw 4 pieces

Suction cup and holder is optional accessories		
Items	Content	Quantity
Monitor holder		1 piece
Suction cup bracket holder		1 piece
Holder arm base		1 piece
Fixed lock ring		1 piece

11. PRODUCT SPECIFICATION

Frequency		<input type="checkbox"/> 315MHz	<input type="checkbox"/> 433.92MHz
Sensor	Pressure range	0 ~ 60PSI	
	Pressure accuracy	±1PSI	
	Temperature accuracy	±3°C	
	Operating voltage	3Volts DC	
	Operating temperature	-40°C ~ 125°C	
	Battery life	1-2 years (depends on working hours per day)	
Monitor	Dimensions	Diameter 20.5mm x Height 22.7mm	
	Weight	13.5g (±1)	
	Operating voltage	3Volts DC (Battery) / 12Volts DC (External)	
	Operating temperature	-20°C ~ 80°C	
	Battery life	3 months (depends on working hours per day)	
Dimensions	Length 80mm x Width 51mm x Height 22mm		
Weight	71.5g (±1)		

※Specifications are correct at time of publication. Subject to change without notice.



This product contains Lithium Button Batteries.

WARNING: KEEP BATTERIES OUT OF REACH OF CHILDREN
Swallowing may lead to serious injury in as little as 2 hours or death due to chemical burns and potential perforation of the oesophagus.



If you suspect your child has swallowed or placed a button battery inside any part of the body seek medical advice immediately.
Australia Poisons Hotline: 13 11 26
New Zealand Poisons Hotline: 0800 POISON (0800 764 766)