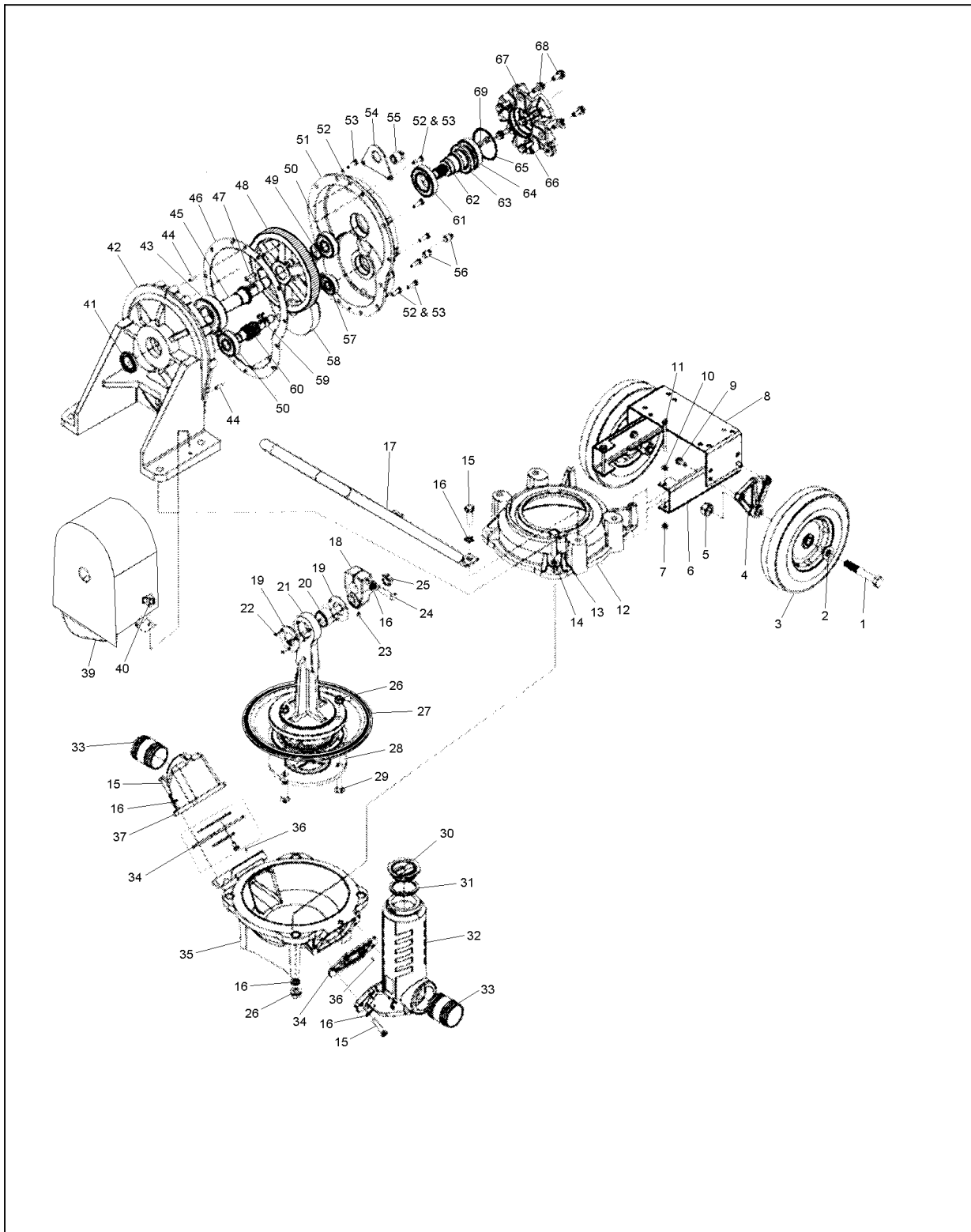


PARTS DIAGRAM



ITEM	DESCRIPTION	PART NO.	QTY.		ITEM	DESCRIPTION	PART NO.
1	5/8" Bolt	40-3-777	2		35	Pump well	40-3-701
2	5/8" washer	40-3-776	2		36	Retaining pin	40-3-713
3	Wheel	40-3-771	2		37	Discharge plate	40-3-703
4	Wheel bracket	40-3-772	2		38	N/A
5	5/8" nut	40-3-721	2		39	Plunger guard	40-3-778
6	Mount brace	40-3-773	2		40	1/4" knob	40-3-740
7	1/4" nut	40-3-722	2		41	Oil seal	40-3-741
8	Engine mount	40-3-774	1		42	Gear box output half	40-3-742
9	5/16" flange bolt	40-3-723	4		43	Output bearing	40-3-743
10	1/4" washer	40-3-724	2		44	Dowel pin	40-3-744
11	1/4" bolt	40-3-725	2		45	Output shaft	40-3-745
12	Pump casing	40-3-704	1		46	Gasket	40-3-746
13	1/2" bolt	40-3-726	4		47	Output shaft key	40-3-747
14	1/2" washer	40-3-727	4		48	Output gear	40-3-748
15	1/2" bolt	40-3-728	8		49	Retaining ring	40-3-749
16	1/2" lock washer	40-3-729	16		50	Intermediate bearing	40-3-750
17	Handle	40-3-775	1		51	Gear box input half	40-3-751
18	Crank	40-3-730	1		52	1/4" lock washer	40-3-752
19	Bearing retainer	40-3-731	2		53	1/4" bolt	40-3-753
20	Plunger bearing	40-3-732	1		54	Lifting bracket	40-3-754
21	Plunger arm	40-3-706	1		55	1/2" plug	40-3-755
22	No.10 machine screw	40-3-733	6		56	1/4" plug	40-3-756
23	5/16" socket screw	40-3-734	1		57	Idler bearing	40-3-757
24	1/2" bolt	40-3-735	1		58	Internal spur gear	40-3-758
25	3/4" locknut	40-3-736	1		59	Pinion shaft key	40-3-759
26	1/2" nut	40-3-737	7		60	Idler pinion shaft	40-3-760
27	Diaphragm	40-3-710	1		61	Input bearing	40-3-761
28	Diaphragm retainer	40-3-707	1		62	Input pinion	40-3-762
29	1/2" carriage bolt	40-3-738	3		63	Oil seal	40-3-763
30	Priming plug	40-3-739	1		64	Sealed input bearing	40-3-764
31	Priming plug gasket	40-3-712	1		65	O ring	40-3-765
32	Suction priming chamber	40-3-702	1		66	M8 set screw	40-3-766
33	3" pipe nipple	40-3-705	2		67	Engine adaptor plate	40-3-767
34	Check valve assembly	40-3-711	2		68	5/16" flanged screw	40-3-768