

STINGRAY • PONTOON

SUBMERSIBLE & SURFACE PUMPS



Stingray is a floatation system which offers a safe solution for the installation and retrieval of submersible pumps in deep water. Pumps are suspended from one or more foam filled floats, which are unsinkable when used within the specified weight limits and buoyancy rating. A pump is securely fixed to the float and can be installed by a crane or with a mobile cradle, with the alkathene pipe assisting entry, positioning and removal. There are three versions available, which are designed for Tsurumi pumps weighing from 20 to 50kgs, 50 to 150kgs and 150 to 1,200kgs.

Designed to keep water levels down during flooding incidents, supply large volumes of water during forest fires, aeration, irrigation and for pumping above sludge and agitated sediment in rivers, lakes and quarries.

Contact our sales department for more information and prices.



Pontoon is a floatation device for engine driven pumps, submersible pumps and surface pumps which weigh up to 100kg. A special insert can also be supplied, as an optional extra, to increase the buoyancy by another 80kg to support pumps up to 180kg. To increase buoyancy further, additional pontoons can be stacked, or linked together, to suspend heavier submersible pumps.

The body is manufactured in 7mm thick polyethylene and filled with solid foam to make it unsinkable when used within the specified weight limits. It is resistant to many chemicals and oils and resistant to ultraviolet light. Supplied with metal inserts to mount surface pumps or to suspend submersibles.

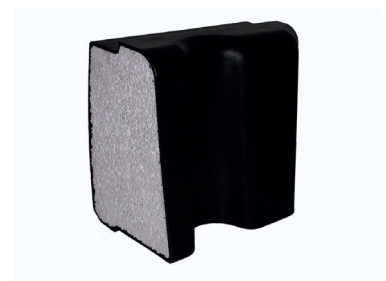
Designed to keep water levels down during flooding incidents, supply large volumes of water during forest fires, aeration, irrigation and for pumping above sludge and agitated sediment in rivers, lakes and quarries.



Pontoon



Insert



Foam filled body

item code	model	w x l x h (mm)	dry weight (kgs)
12-85-1020	Pontoon	900x1100x300	10.0
12-85-1036	Insert	800x800x260	2.8