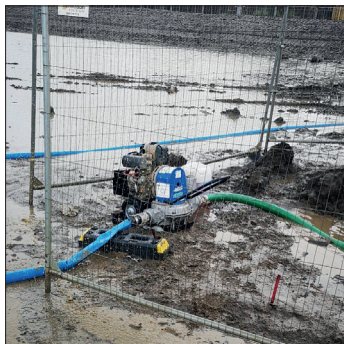


DRYMAX

DIAPHRAGM - TRASH

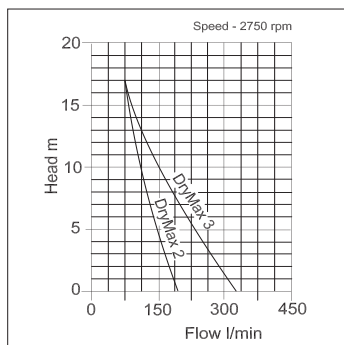


DryMax are automatic priming, diaphragm pumps with Yanmar L48E electric start engines. With diaphragm pumps, priming is unnecessary and indefinite dry running is permissible. They are suitable for pumping mud, sludge, sewage and fluids carrying sand and solids. For ease of access and storage, the design features a pivoting pump chamber for use sideways or frontwards. Enhanced site-use features include a long run, 5.4litre (6 hour) fuel tank, BSP male connections, 2-wheel site trolley, mud plate, rubber engine mounts and stand by engine recoil. A quick release cam coupling kit, with heavy duty hose clamps, is an optional extra for operator convenience.

Operating conditions: Maximum recommended suction lift: 6 mtrs

Fluid: Clean water | Dirty water | Water with solids | Sludge | Sewage

Application: Hire fleets | Construction | Drainage | Waste removal | Submerged debris



DryMax	Type	Fuel	Starting
	Diaphragm	Diesel	Electric

Pump	Inlet & priming chamber	Outlet chamber	Inlet & outlet nipple	Pump body
	Cast aluminium	Cast aluminium	Steel	Cast aluminium
	Diaphragm & NRVs	Plunger	Plunger guard	
	Rubber	Cast aluminium	Steel	

Handling & Hose fittings	Chassis & mud plate		Handle
	Steel		Tubular steel
	Starting & Hose fittings		
	Including: battery and strainer. Excluding: couplings and hose clips		



DryMax 2



DryMax 3



Quick release coupling kit

item code	model	inlet (mBSP)	outlet (mBSP)	engine	fuel	HP	flow (l/min)	head (mtrs)	solids (mm)	w x l x h (mm)	dry weight (kgs)
14-20-1001	DryMax 2	2"	2"	L48E	diesel	4.7	190	17	40	660x1210x720	90.0
14-20-1000	DryMax 3	3"	3"	L48E	diesel	4.7	330	17	40	775x1210x720	94.0
130050	optional extra: 50mm quick release coupling kit (2 x Part C, 2 x Part A, 3 x hose clamps)										1.4
130080	optional extra: 80mm quick release coupling kit (2 x Part C, 2 x Part A, 3 x hose clamps)										2.4