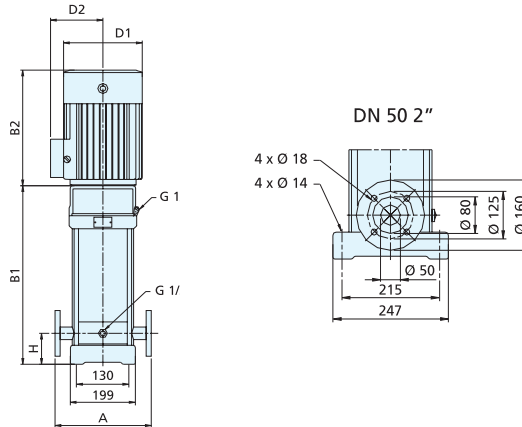
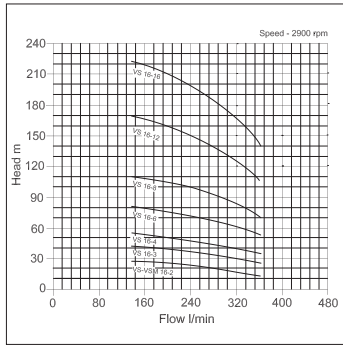


VS 16

VERTICAL MULTI-STAGE

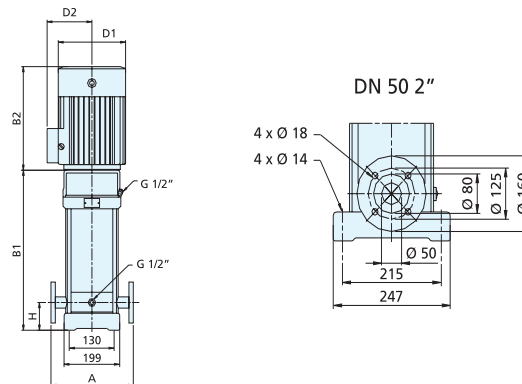
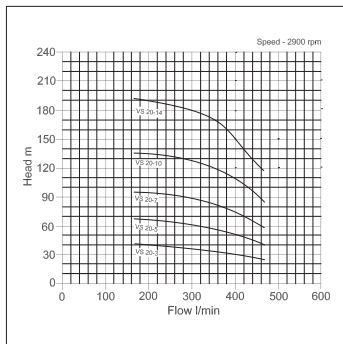


item code	model	flange/BSP	kW	volt	flow (l/min)	head (mtrs)	A	H	B1	B2	B1 + B2	D1	D2	weight (kgs)
19-15-1166	VSM16-2	DN50/2"	2.2	230	366	27	300	90	397	290	687	190	155	60
19-15-1268	VS16-2	DN50/2"	2.2	400	366	27	300	90	397	290	687	190	155	60
19-15-1041	VS16-3	DN50/2"	3	400	366	41	300	90	452	315	767	197	165	75
19-15-1114	VS16-4	DN50/2"	4	400	366	54	300	90	497	335	832	230	188	85
19-15-1028	VS16-6	DN50/2"	5.5	400	366	82	300	90	607	430	1037	260	208	110
19-15-1176	VS16-8	DN50/2"	7.5	400	366	110	300	90	697	430	1127	260	208	120
19-15-1030	VS16-12	DN50/2"	11	400	366	166	300	90	965	490	1455	330	255	205
19-15-1246	VS16-16	DN50/2"	15	400	366	222	300	90	1145	490	1635	330	255	238

PREMIUM EFFICIENCY MOTORS (IE3) AVAILABLE FOR ALL 400v MODELS (P.O.A.)

VS 20

VERTICAL MULTI-STAGE



item code	model	flange/BSP	kW	volt	flow (l/min)	head (mtrs)	A	H	B1	B2	B1 + B2	D1	D2	weight (kgs)
19-15-1108	VS20-3	DN50/2"	4	400	466	41	300	90	452	335	787	230	188	57
19-15-1194	VS20-5	DN50/2"	5.5	400	466	67	300	90	562	430	992	260	208	74
19-15-1045	VS20-7	DN50/2"	7.5	400	466	95	300	90	652	430	1082	260	208	84
19-15-1099	VS20-10	DN50/2"	11	400	466	136	300	90	875	490	1365	330	255	145
19-15-1234	VS20-14	DN50/2"	15	400	466	192	300	90	1055	490	1545	330	255	165

PREMIUM EFFICIENCY MOTORS (IE3) AVAILABLE FOR ALL 400v MODELS (P.O.A.)